

CERTIFICATE OF LOCATION OF GOVERNMENT CORNER

County of Anoka

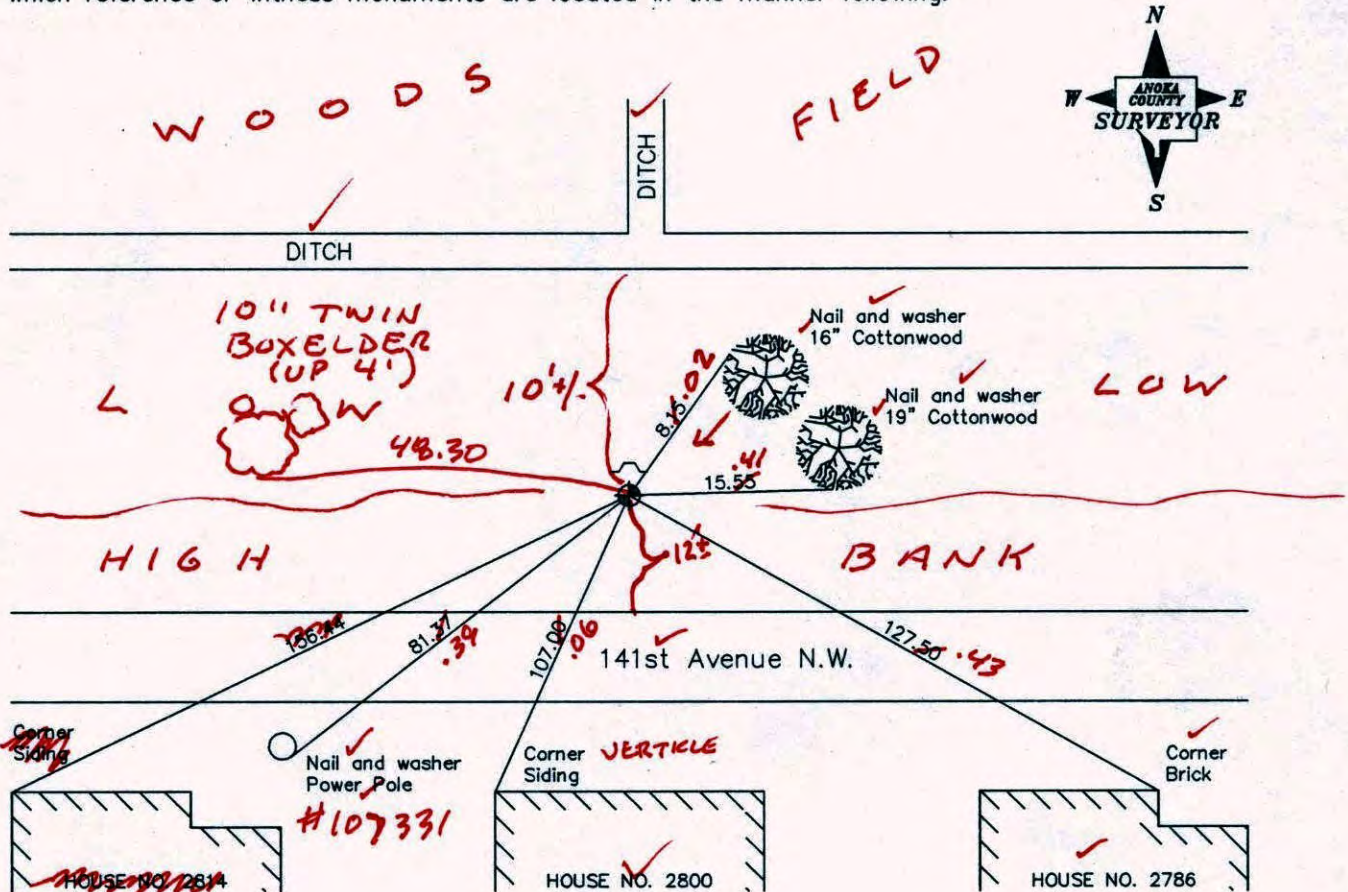
State of Minnesota

South 1/4 Corner of Sec. 28 Township 32 Range 24

I hereby certify that on the 8th day of August, 1960, I found the described corner which was evidenced by a concrete monument

and I further certify that to perpetuate the location of said corner, I did, at the exact location thereof, place a permanent marker consisting of a cast iron monument with sign and post on the north side (DOWN 1.03)

which reference or witness monuments are located in the manner following:



Revised date

7/29/88
7/22/93
11/16/00

N.A.D. 1983 Co-ordinates

County Project Co-ordinates	State Plane Co-ordinates
Northing <u>169829.6040</u>	Y _____
Easting <u>481889.3854</u>	X _____

Date 11/16/00

CERTIFICATE OF LOCATION OF GOVERNMENT CORNER

County of Anoka

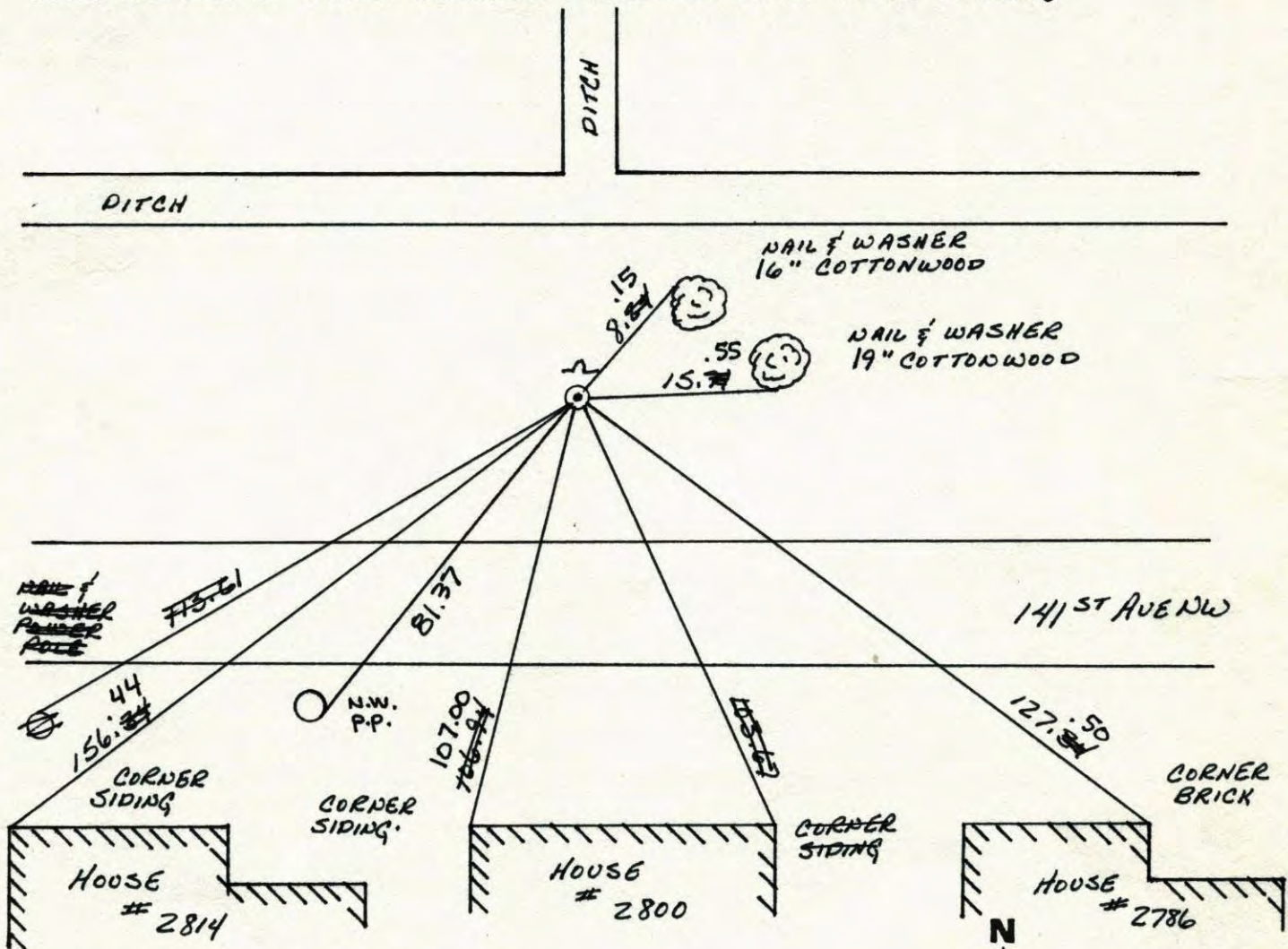
State of Minnesota

SOUTH 1/4 Corner of Sec. 28 Township 32 Range 24

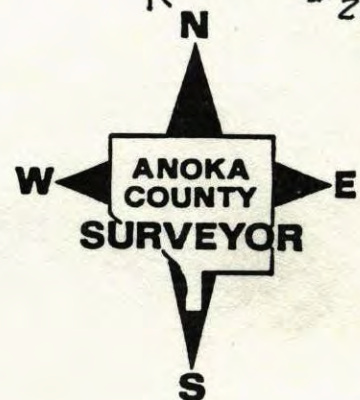
I hereby certify that on the 8 day of AUGUST, 1960, I found the described corner which was evidenced by CONCRETE MONUMENT

and I further certify that to perpetuate the location of said corner, I did, at the exact location thereof, place a permanent marker consisting of CAST IRON MONUMENT WITH SIGN AND POST ON THE NORTH SIDE

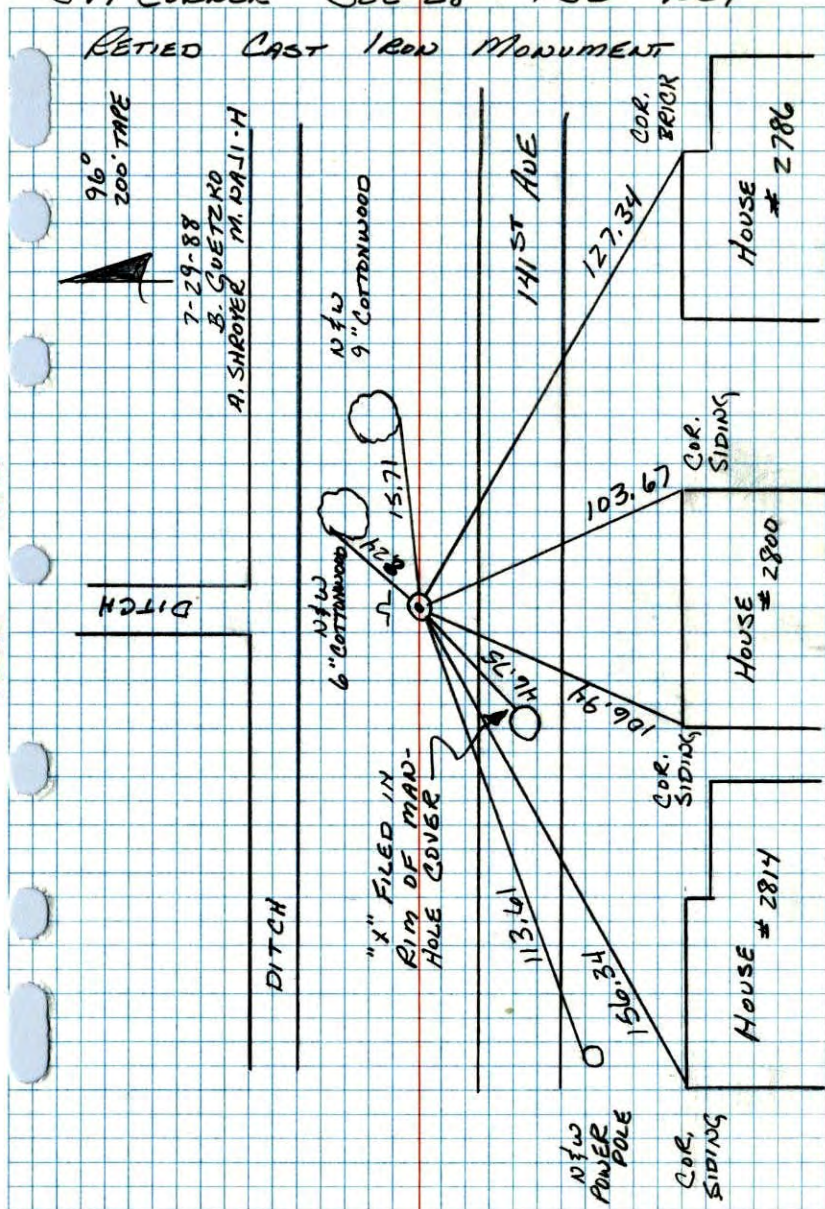
which reference or witness monuments are located in the manner following:



Revised date	Revised date	Revised date
6-29-82		
6-6-85		
7-29-88		
7-22-93		
11-16-00		



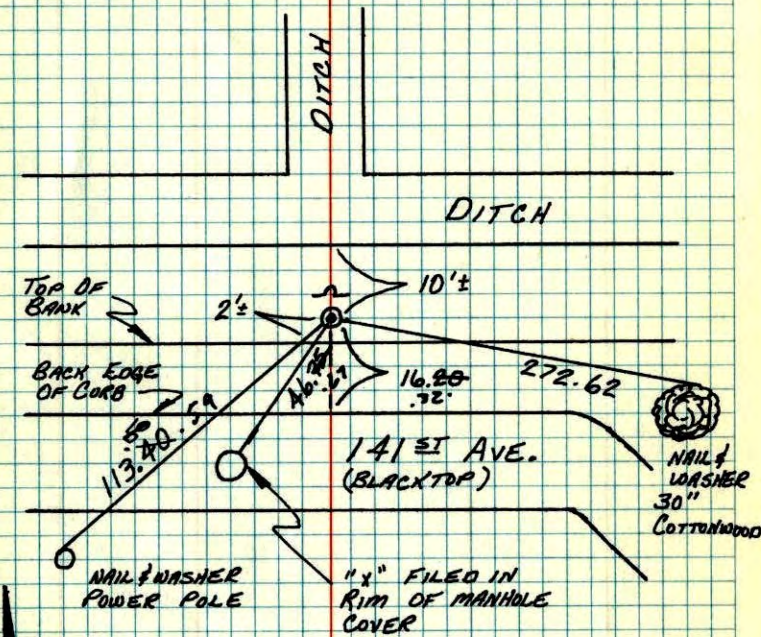
S 1/4 CORNER SEC 28 T32 R24



NO. 448 TELETYPE

S 1/4 CORNER, SECTION 28-T32-R24

CAST IRON MONUMENT IN PLACE. PLACED STEEL SIGN POST & WARNING SIGN NORTH OF MONUMENT.



NOV. 3, 1977
M.D. ANDERSON
R.W. BERTLESON
M.J. AUNE

TIE CHECK
6-11-79
B. STEPHENS
D. STEPHENS
P. ROSS

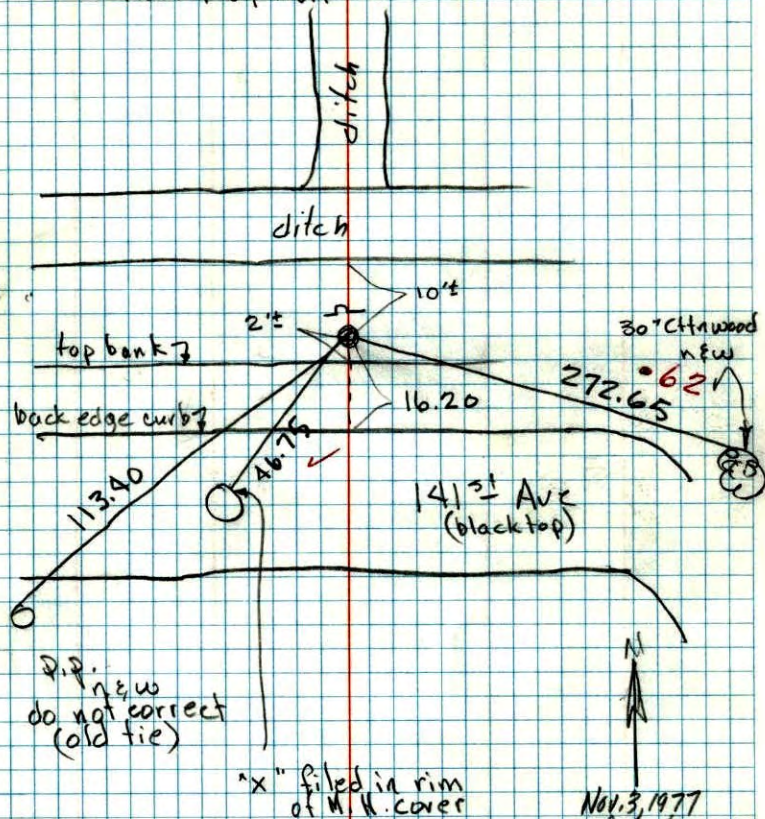
TIE CHECK
6-29-81
P. ROSS
P. HORNBY
J. BEIGER

TEMPERATURE CORRECTED
AND HORIZONTALLY
TAPED MEASUREMENTS

ROLAND W. ANDERSON
COUNTY SURVEYOR
ANOKA COUNTY, MINNESOTA

5/4 Cor. Sec. 28-T32-R24

Cast iron mon. in place
placed steel sign post & warning sign
north of Mon.



P.P. new
do not correct
(old tie)

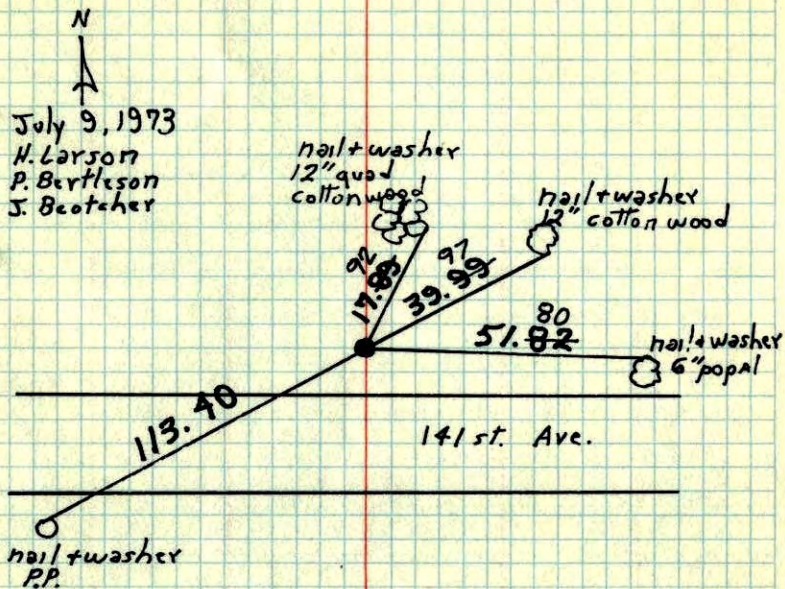
"x" filed in rim
of M.H. cover

Nov. 3, 1977
M. D. Anderson
P. Bertleson
M. V. Hune

temp. 50°
tape #17

5/4 Cor Sec. 28 T32 R 24

Replaced broken concrete with
cast iron monument.



July 9, 1973
H. Larson
P. Bertleson
J. Beatcher

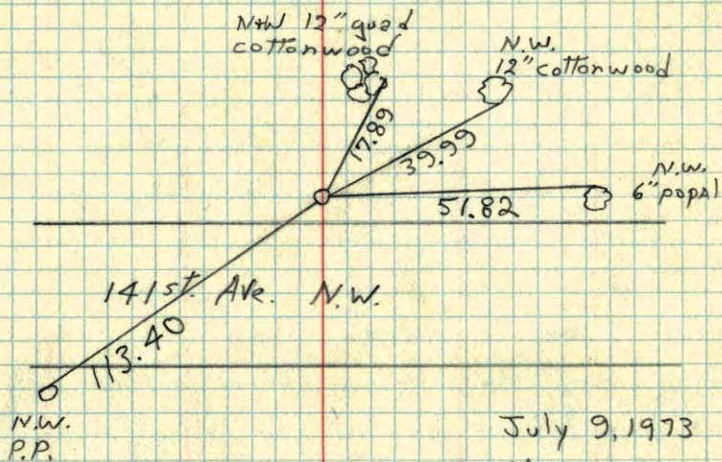
ROLAND W. ANDERSON
COUNTY SURVEYOR
ANOKA COUNTY, MINNESOTA

TEMPERATURE CORRECTED
AND HORIZONTALLY
TAPED MEASUREMENTS

TIE CHECK
6-10-76
G ADAMS
B SANWEGARD
S BRIEN

S 1/4 Cor. Sec. 28 T32 R24

Replaced broken concrete with
cast iron monument

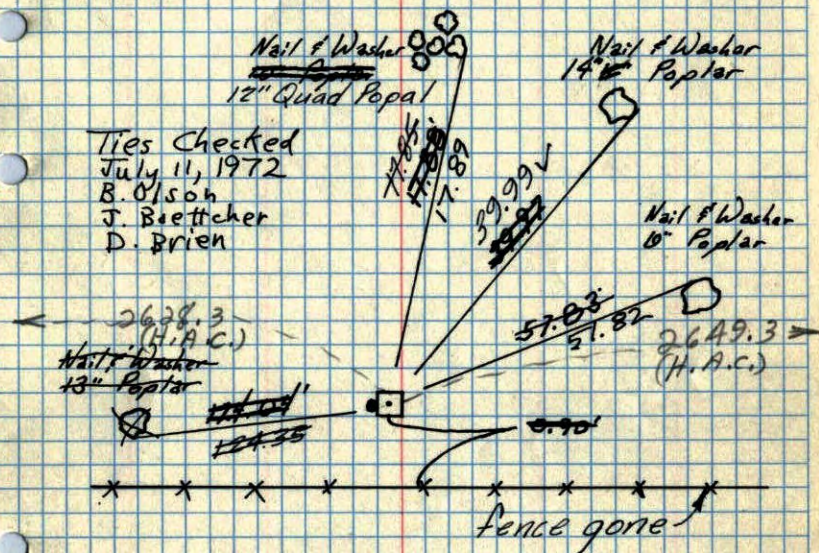


July 9, 1973

H. Larson
P. Bertleson
J. Beotcher

S 1/4 Cor. Sec 28 - T32 - R24

Coner Mon up 1'
Iron Pipe on West Side



Ties Checked
July 11, 1972
B. Olson
J. Beettcher
D. Brien

8/8/00

Bill Rogers
Randy Carlson
Ralph Robinson

Tie check
Aug. 26, 1964
M.D. Anderson
J. Dunlap

Tie Check
July 26, 1968
D. Powell
P. Pich
R. Olson

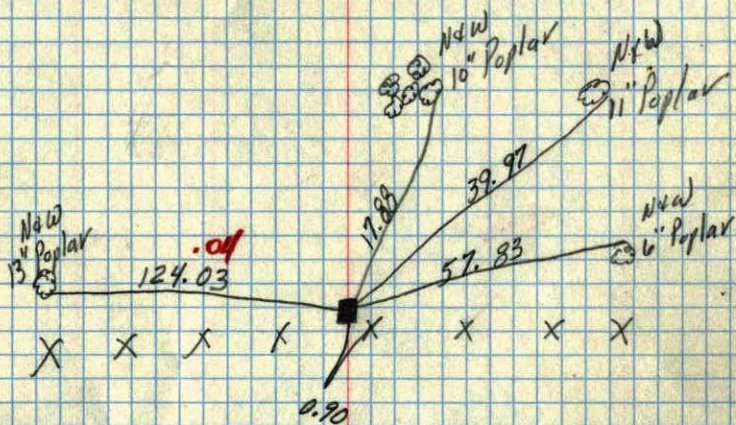
TEMPERATURE CORRECTED
AND HORIZONTALLY
TAPED MEASUREMENTS

ROLAND W. ANDERSON
COUNTY SURVEYOR
ANOKA COUNTY, MINNESOTA

S1/4 Cor. Sec. 28 T32 R24

Cont. Mon. Up. 1'

Iron Pipe on West Side



9/12/60

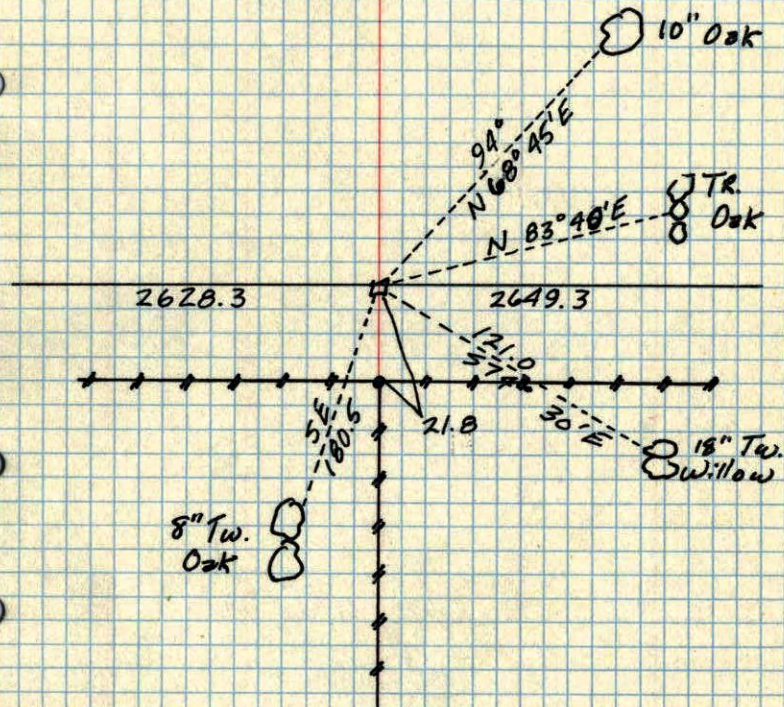
TC
Temp. 80°
8/8/60
Bill Rogers
Ranky Carlson
Ralph Robinson

S1/4 Sec 28 T32 R24 23

Cont. Mon. Up 0.5'

IRON W. Side

Var 7°30'



N.C.H