

CERTIFICATE OF LOCATION OF GOVERNMENT CORNER

County of Anoka

State of Minnesota

Witness Corner of Sec. 28 Township 32 Range 24
 (on west line of SW 1/4)

On the 10th day of July, 1990, the described corner was evidenced by area resurvey

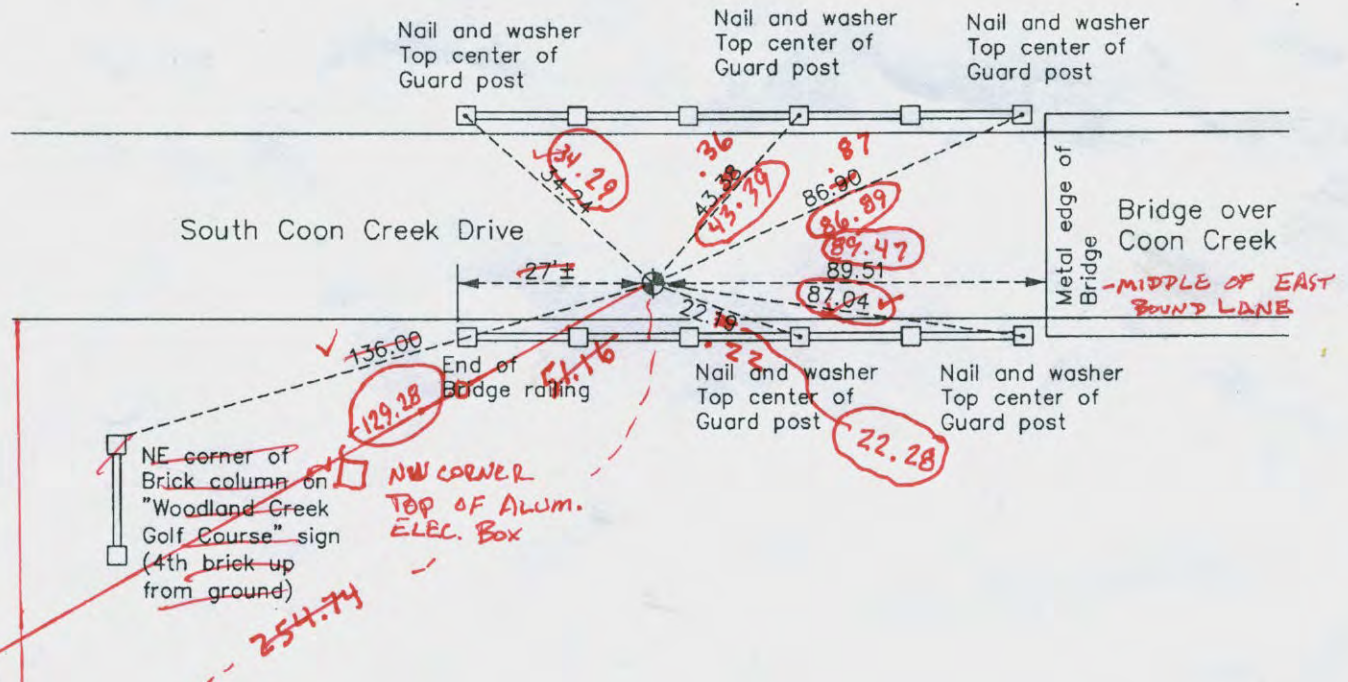
and to perpetuate the location of said corner, at the exact location thereof, a permanent marker was placed consisting of a cast iron monument

AND on the 11th day of October, 2010, said permanent marker was found flush with the surface and the ties were updated

Updated reference ties are as shown below.

*5.8.12 JS. JB.
 TRANSIT TIE
 SWING TIES w/ MINI*

*11.16.12 J.S. S.H.
 SET C.I.M. REIFIED CIRCLED
 TIES ARE GOOD
 VRS OF NEW N: 171267.1849
 C.I.M.
 30 Q: 0.06 E: 479278.1304*



ANOKA COUNTY SURVEYOR
 S
 Revision Date
 6/14/11

N.A.D. 1983 Coordinates
 (1996 Adjustment)

County Project Coordinates	
Northing	171267.2179
Easting	479278.1359
Date	10/26/00

I hereby certify that this United States public land survey monument record is correct and complete to the best of my knowledge and belief.

Larry D. Hoium Date 6/14/11
 Larry D. Hoium, Anoka County Surveyor
 Minnesota License Number 18165

CERTIFICATE OF LOCATION OF GOVERNMENT CORNER

County of Anoka State of Minnesota

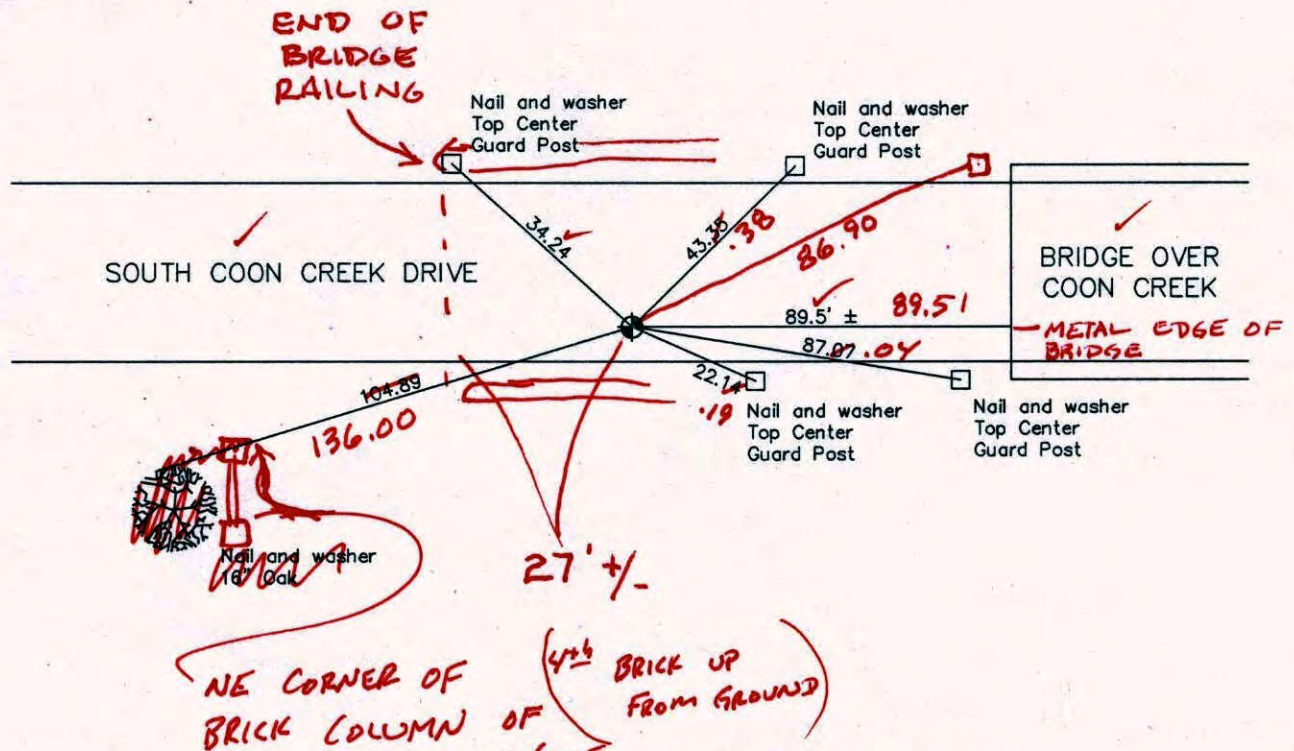
Witness Corner of Sec. 28 Township 32 Range 24

On West Line Of The Southwest Quarter
 I hereby certify that on the 10th day of July, 1990, I found the described corner which was
 evidenced by area resurvey

and I further certify that to perpetuate the location of said corner, I did, at the exact location
 thereof, place a permanent marker consisting of a cast iron monument **(FLUSH)**

which reference or witness monuments are located in the manner following:

BK-S14
 10/11/10
 T/T.



Revised date

7/20/93
10/26/00

N.A.D. 1983 Co-ordinates

County Project Co-ordinates	
Northing	171267.2179
Easting	479278.1359

State Plane Co-ordinates	
Y	_____
X	_____

Date 10/26/00

CERTIFICATE OF LOCATION OF GOVERNMENT CORNER

County of Anoka

State of Minnesota

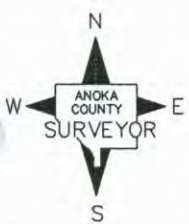
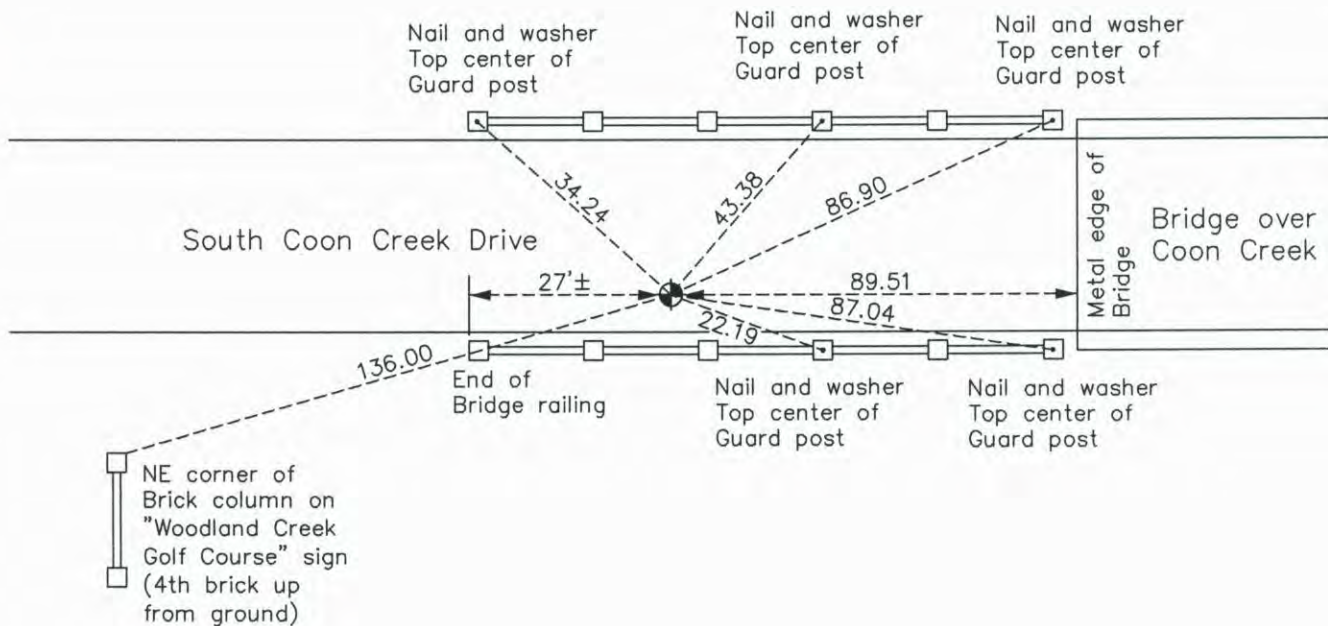
Witness Corner of Sec. 28 Township 32 Range 24
 (on west line of SW 1/4)

On the 10th day of July, 1990, the described corner was evidenced by area resurvey

and to perpetuate the location of said corner, at the exact location thereof, a permanent marker was placed consisting of a cast iron monument

AND on the 11th day of October, 2010, said permanent marker was found flush with the surface and the ties were updated

Updated reference ties are as shown below.



Revision Date
6/14/11

N.A.D. 1983 Coordinates
 (1996 Adjustment)

County Project Coordinates	
Northing	171267.2179
Easting	479278.1359
Date	10/26/00

I hereby certify that this United States public land survey monument record is correct and complete to the best of my knowledge and belief.

Larry D. Hoium Date 6/14/11

Larry D. Hoium, Anoka County Surveyor
 Minnesota License Number 18165

CERTIFICATE OF LOCATION OF GOVERNMENT CORNER

W.C. on ~~South Line of~~ **WEST LINE** County of Anoka

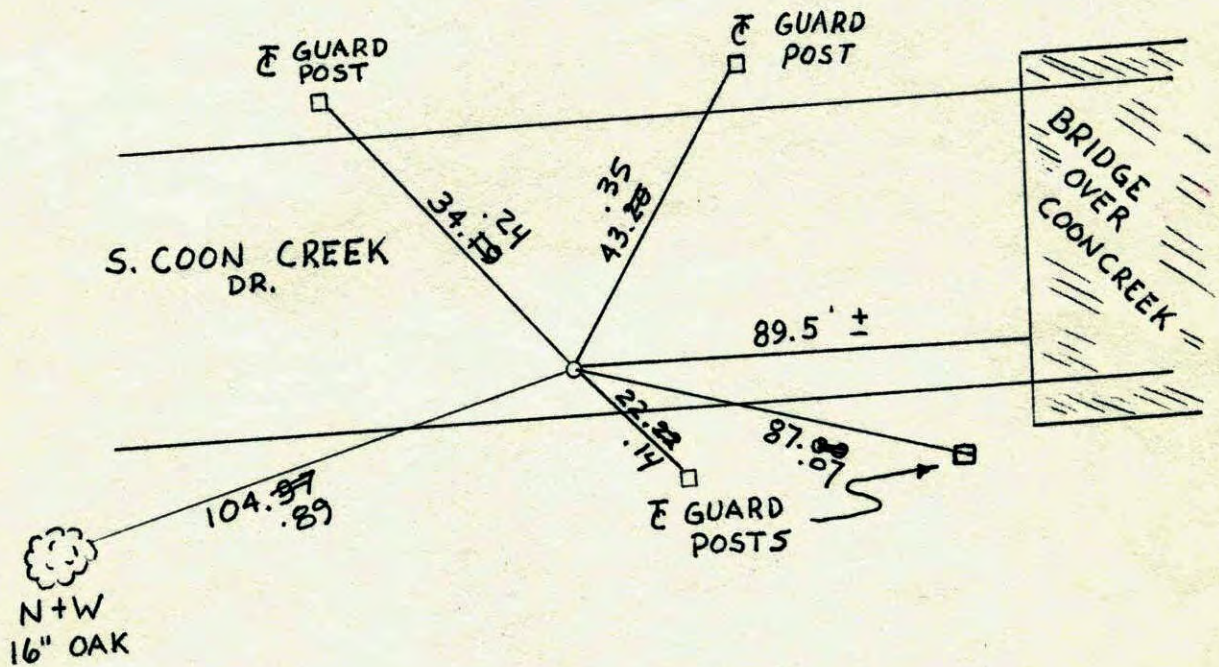
State of Minnesota

SOUTHWEST QTR. Corner of Sec. 28 Township 32 Range 24

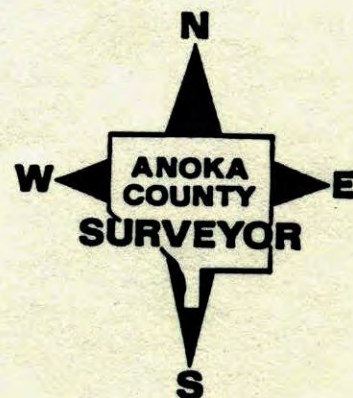
I hereby certify that on the 10 day of JULY, 1990, I found the described corner which was evidenced by AREA RESURVEY

and I further certify that to perpetuate the location of said corner, I did, at the exact location thereof, place a permanent marker consisting of CAST IRON MONUMENT

which reference or witness monuments are located in the manner following:



Revised date	Revised date	Revised date
7-10-90		
7-20-93		
10-26-00		



W.C. ON WEST LINE OF SW 1/4 SEC. 28 T32 R24

SET CAST IRON MONUMENT FROM AREA
RESURVEY C.I. FLUSH ' SOUTH OF E

7-10-90
H. LARSON
P. KLENZ
M.Z.
D. K.

NO. 448
TELEPHONE

