

CERTIFICATE OF LOCATION OF GOVERNMENT CORNER

County of Anoka State of Minnesota

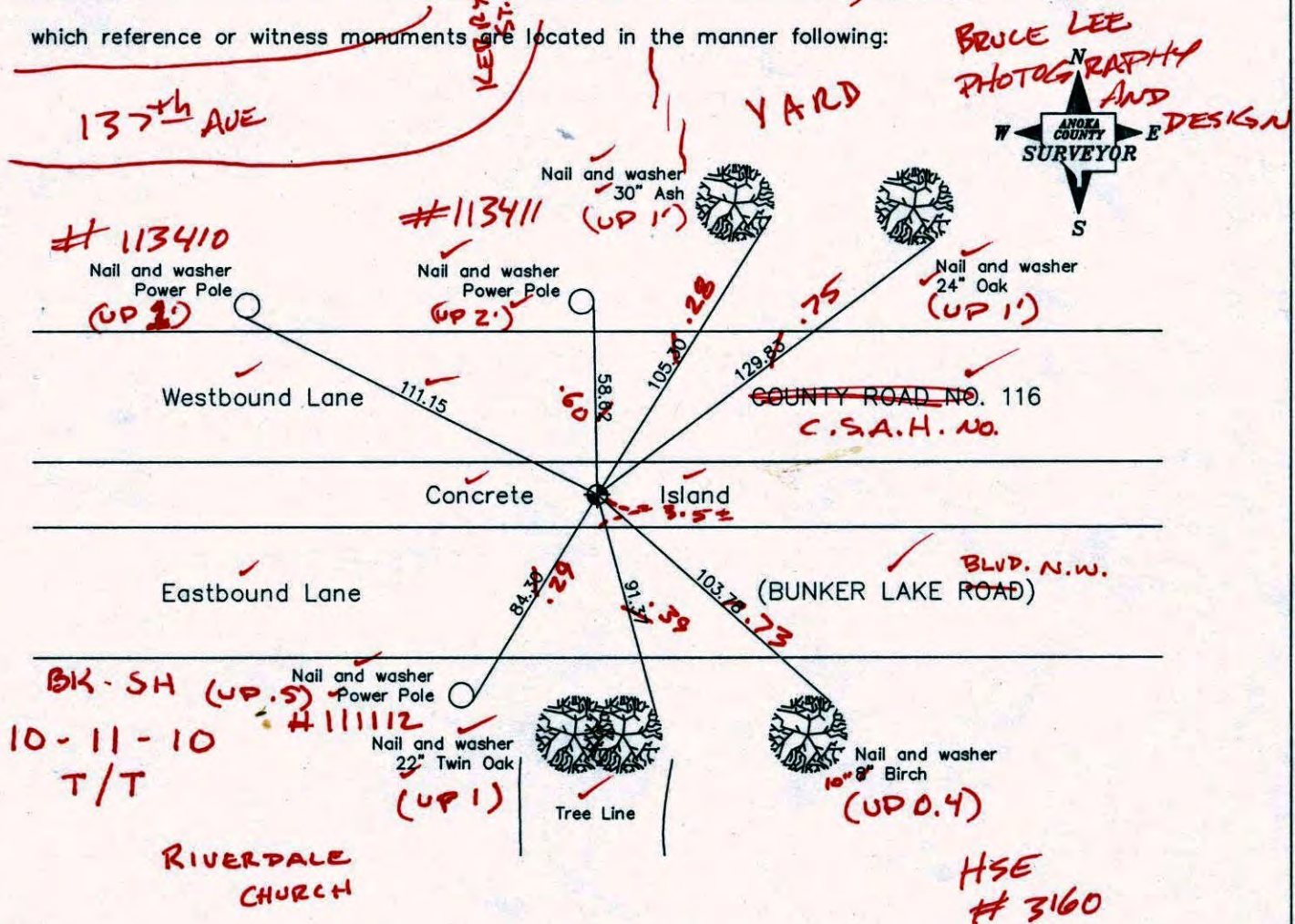
East 1/4 Corner of Sec. 32 Township 32 Range 24

I hereby certify that on the 16th day of May, 1956, I found the described corner which was evidenced by a granite monument

and I further certify that to perpetuate the location of said corner, I did, at the exact location thereof, place a permanent marker consisting of a cast iron monument (FLUSH)

(3.5± NORTH OF BACK OF CURB)

which reference or witness monuments are located in the manner following:



Revised date

7/19/93
8/13/99
7/19/00

N.A.D. 1983 Co-ordinates

County Project Co-ordinates	State Plane Co-ordinates
Northing <u>167184.9157</u>	Y _____
Easting <u>479222.8442</u>	X _____

Date 7/19/00

CERTIFICATE OF LOCATION OF GOVERNMENT CORNER

County of Anoka

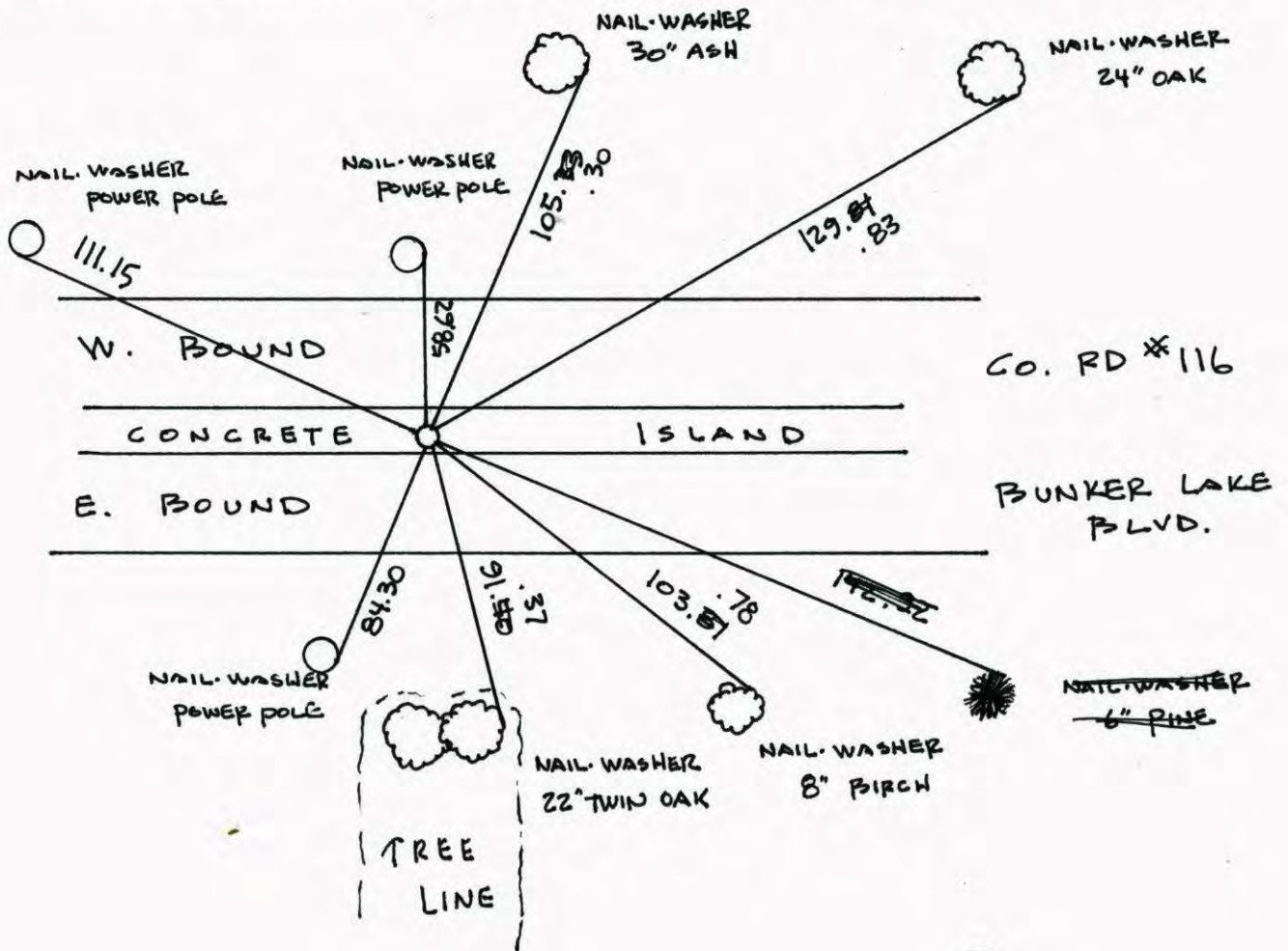
State of Minnesota

EAST 1/4 Corner of Sec. 32 Township 32 Range 24

I hereby certify that on the ___ day of _____, 19 ___, I found the described corner which was evidenced by GRANITE MONUMENT

and I further certify that to perpetuate the location of said corner, I did, at the exact location thereof, place a permanent marker consisting of CAST IRON MONUMENT

which reference or witness monuments are located in the manner following:

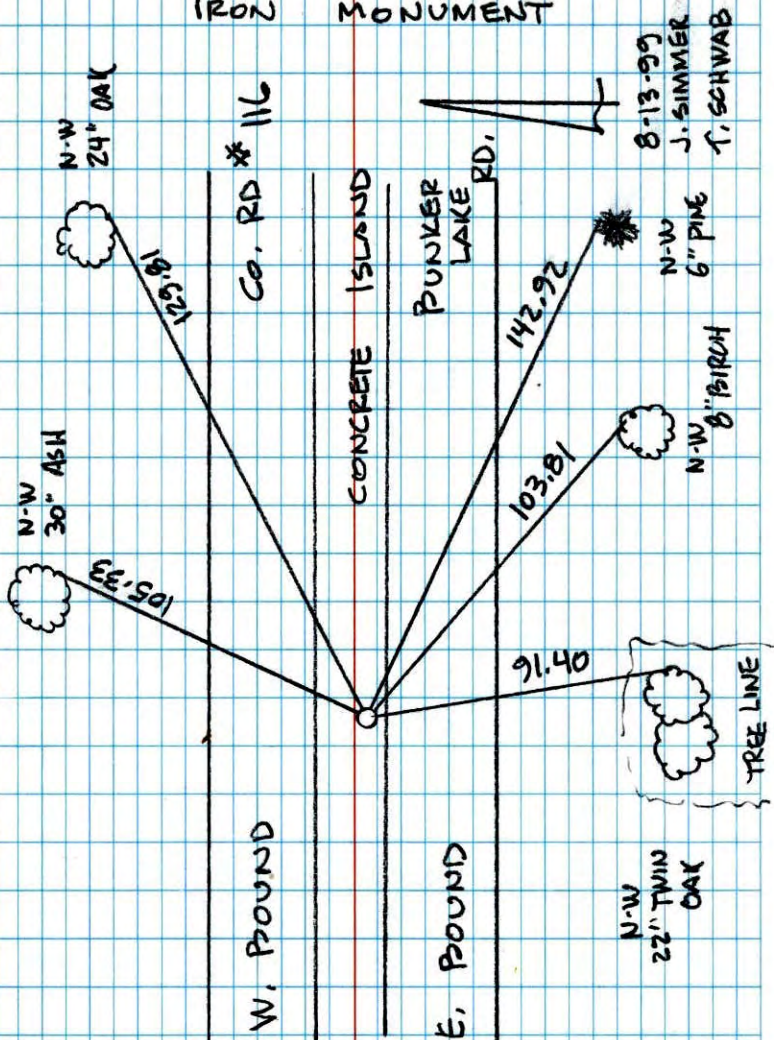


Revised date	Revised date	Revised date
6-30-82		
5-28-85		
7-27-88		
7-19-93		
8-13-99		
7-19-00		



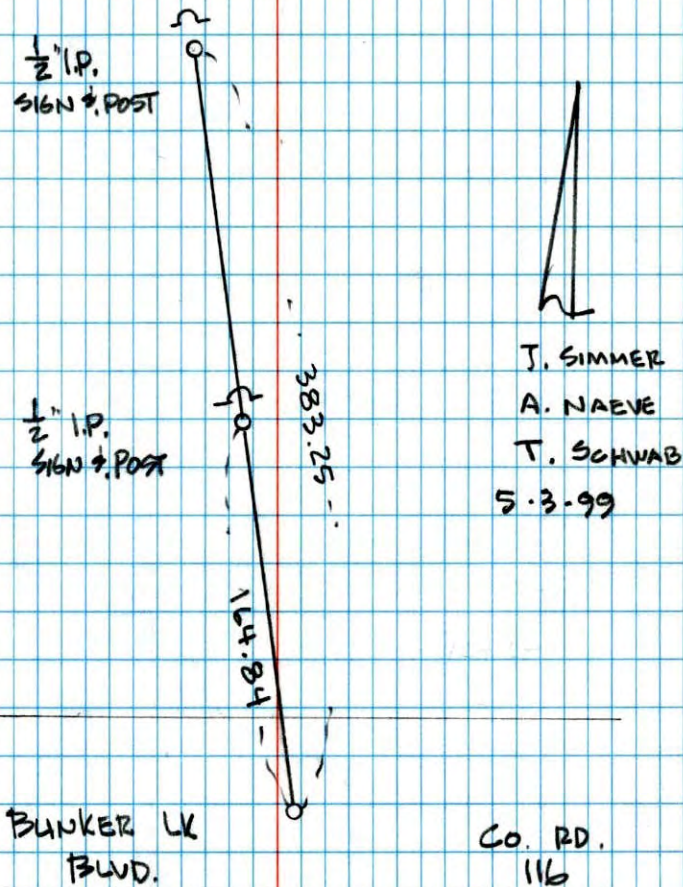
EAST 1/4 COR. SEC 32 T 32 R 24

REPLACED & RETIED CAST
IRON MONUMENT



NATIONAL PRINTFAST NO. 446

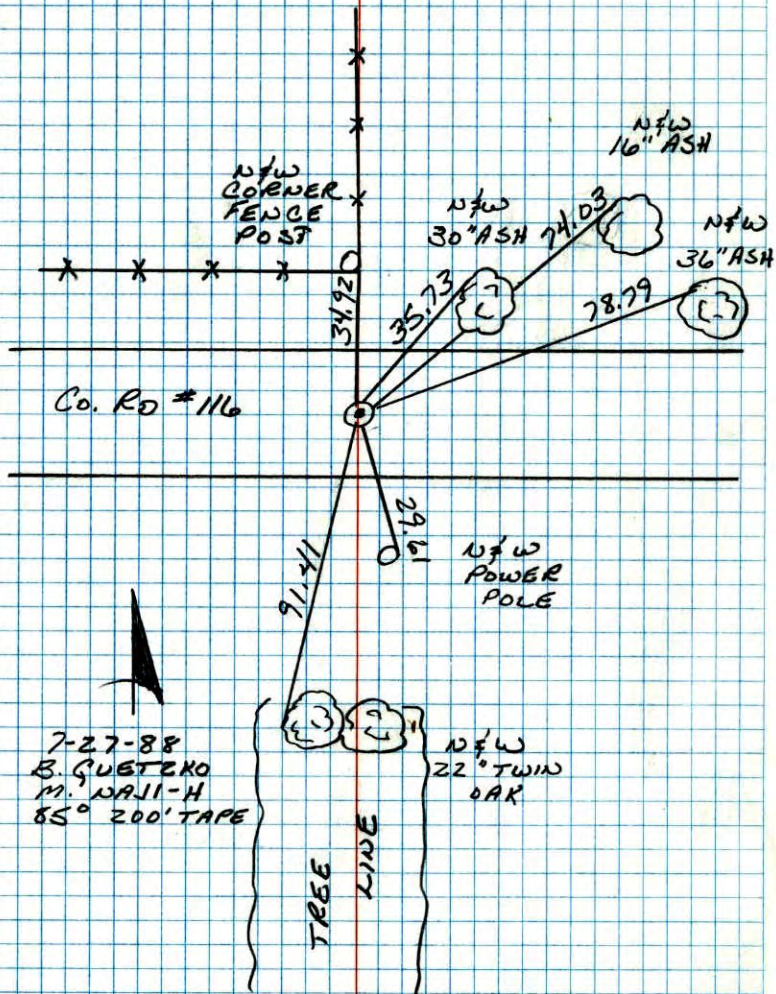
E 1/4 COR SEC 32 T 32 R 24



NATIONAL PRINTFAST NO. 446

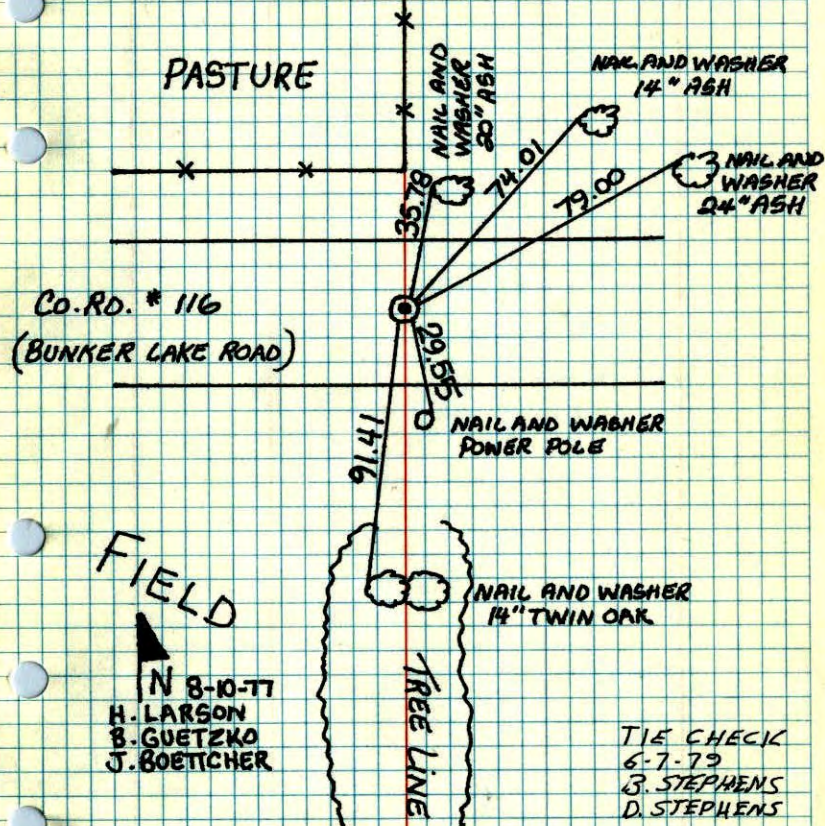
E 1/4 COR. SEC 32 T32 R24

RETIED CAST IRON MONUMENT



E 1/4 COR. SEC. 32 T. 32 R. 24

SET CAST IRON MONUMENT IN PLACE OF
GRANITE MONUMENT REMOVED BY
CONSTRUCTION. C.I. FLUSH AND ON C.
P.K. NAILS 2.00' NORTH AND EAST.

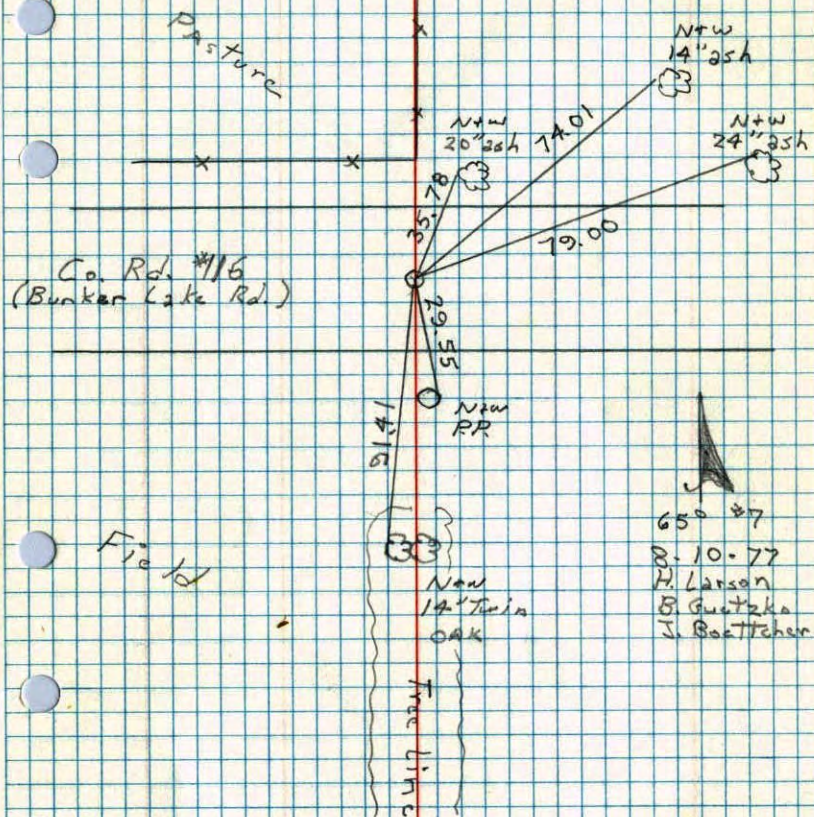


TEMPERATURE CORRECTED
AND HORIZONTALLY
TAPED MEASUREMENTS

ROLAND W. ANDERSON
COUNTY SURVEYOR
ANOKA COUNTY, MINNESOTA

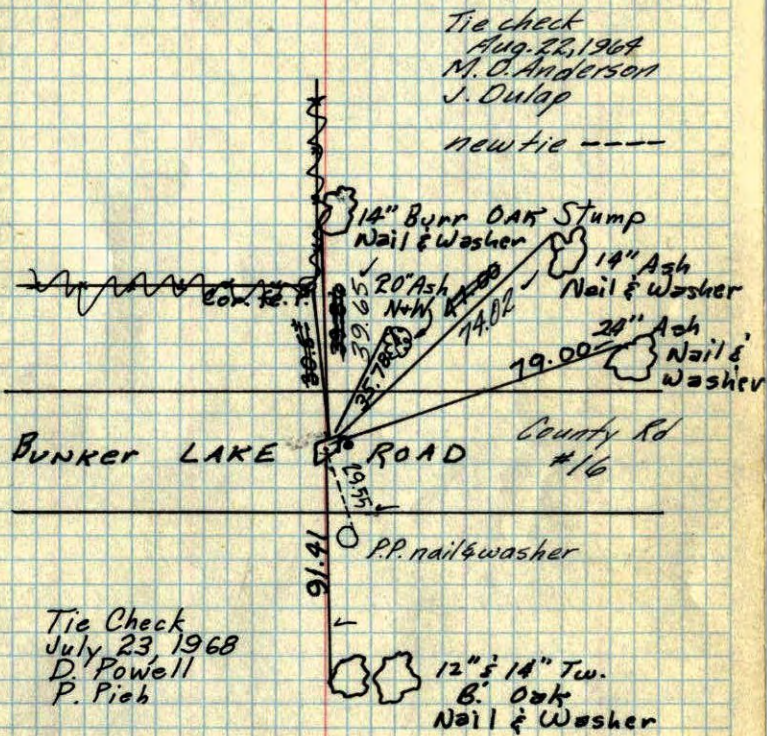
E 1/4 Cor Sec 32 T32 R24

Set cast iron monument in
place of Granite monument removed
by road construction. C.I. Flush and
on $\frac{1}{2}$ PKs 2.00' N & E.



E 1/4 Conn. Sec 32, T32, R24

Found Granite Mon &
Iron Pipe to the East. Mon
down .25 & Iron down .1



Tie check
Aug. 22, 1968
M. O. Anderson
J. Dulap
new tie ----

Tie Check
July 23, 1968
D. Powell
P. Pieh

Ties checked
July 5, 1972
B. Olson
R. Bauer
D. Brien

TIE CHECK
6-11-76
G. ADAMS
B. SANNEBRO
S. BRIEN

ROLAND W. ANDERSON
COUNTY SURVEYOR
ANOKA COUNTY, MINNESOTA

Dennis Potter
assisting
9/30/59

E 1/4 Corn. sec. 32, T32, R24

