

CERTIFICATE OF LOCATION OF GOVERNMENT CORNER

County of Anoka

State of Minnesota

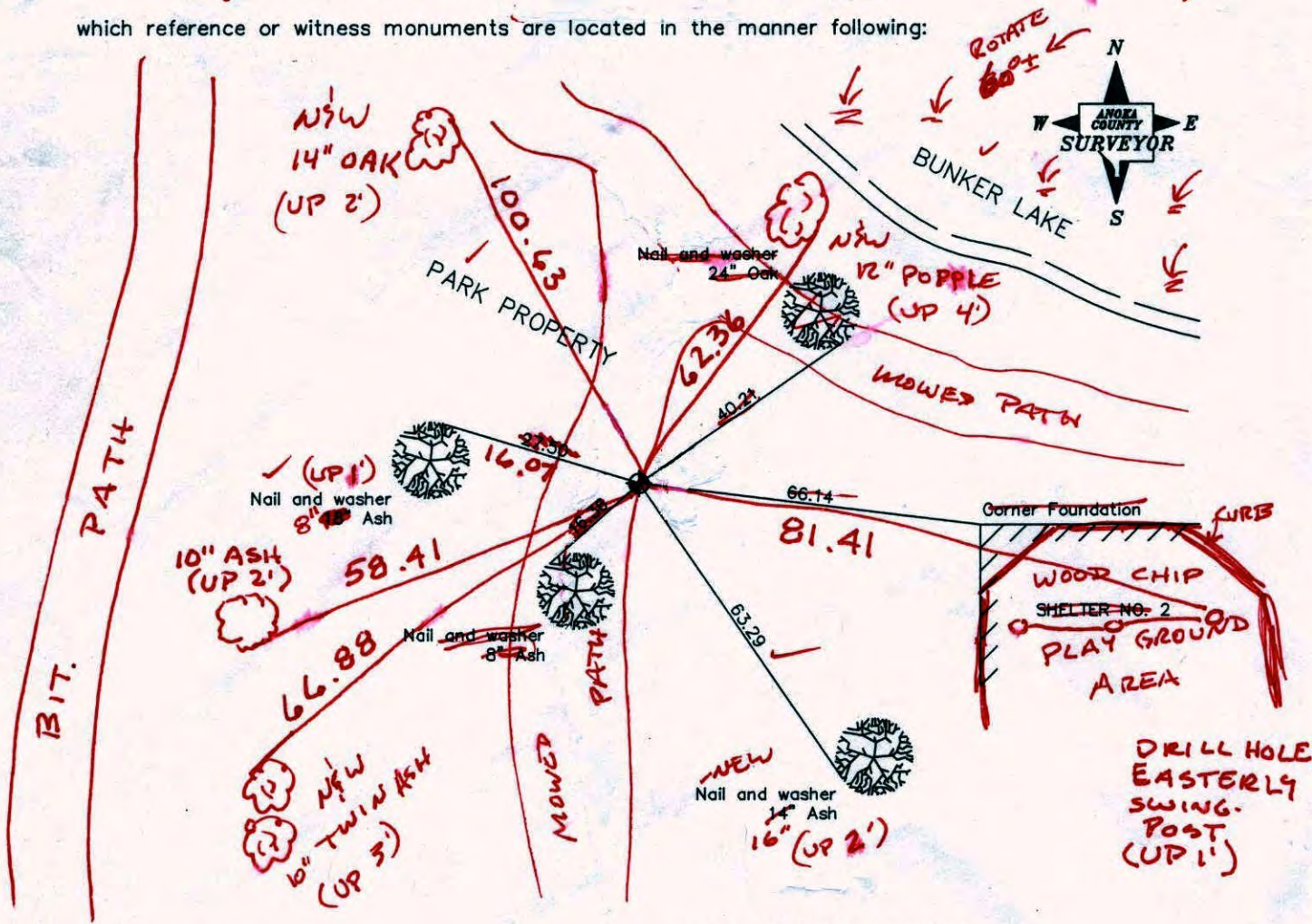
Witness Corner of Sec. 35 Township 32 Range 24

On The East Line

I hereby certify that on the 10th day of May, 1967, I found the described corner which was evidenced by area resurvey

and I further certify that to perpetuate the location of said corner, I did, at the exact location thereof, place a permanent marker consisting of a cast iron monument, down 2'±

which reference or witness monuments are located in the manner following:



Revised date

8/4/88
7/23/93
11/28/00

BK/SH
11/1/10
T/T

N.A.D. 1983 Co-ordinates

County Project Co-ordinates	
Northing	166435.5879
Easting	495019.3903

State Plane Co-ordinates	
Y	_____
X	_____

Date 11/28/00

CERTIFICATE OF LOCATION OF GOVERNMENT CORNER

County of Anoka

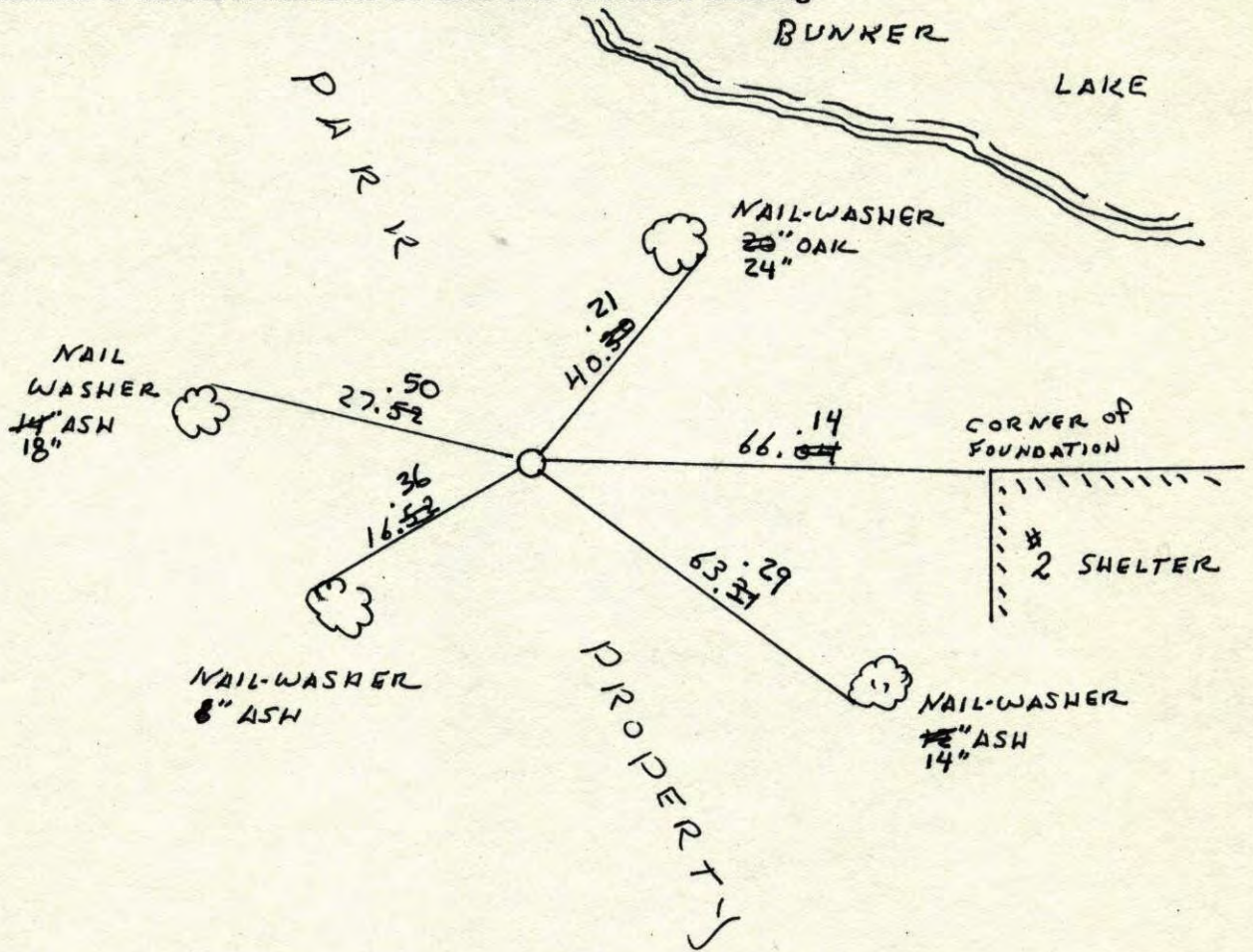
State of Minnesota

WITNESS Corner of Sec. 35 Township 32 Range 24
ON EAST LINE

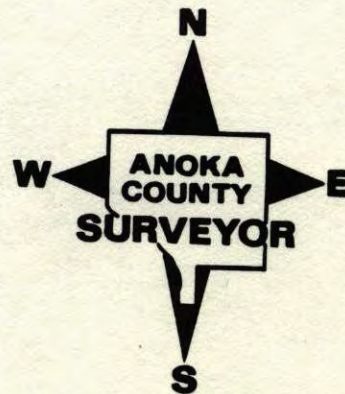
I hereby certify that on the 10TH day of MAY, 19 67, I found the described corner which was evidenced by AREA RESURVEY

and I further certify that to perpetuate the location of said corner, I did, at the exact location thereof, place a permanent marker consisting of CAST IRON MONUMENT
(DOWN 2' ±)

which reference or witness monuments are located in the manner following:



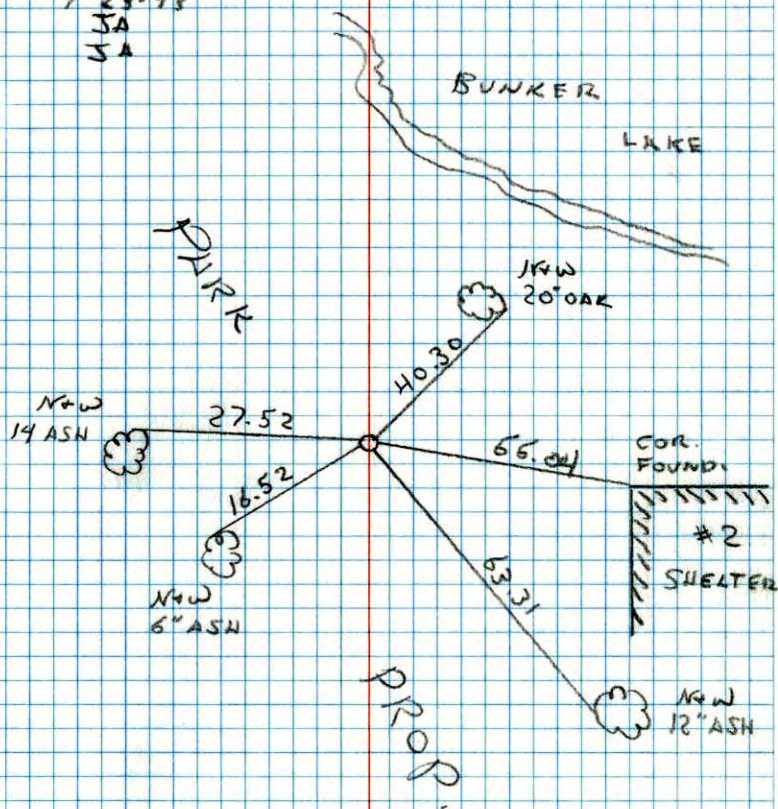
Revised date	Revised date	Revised date
6-29-82		
6-12-85		
8-4-88		
7-23-93		
11-28-00		



WITNESS ON EAST LINE SEC 35 T32 R24

RETIRO CAST IRON

7-23-93

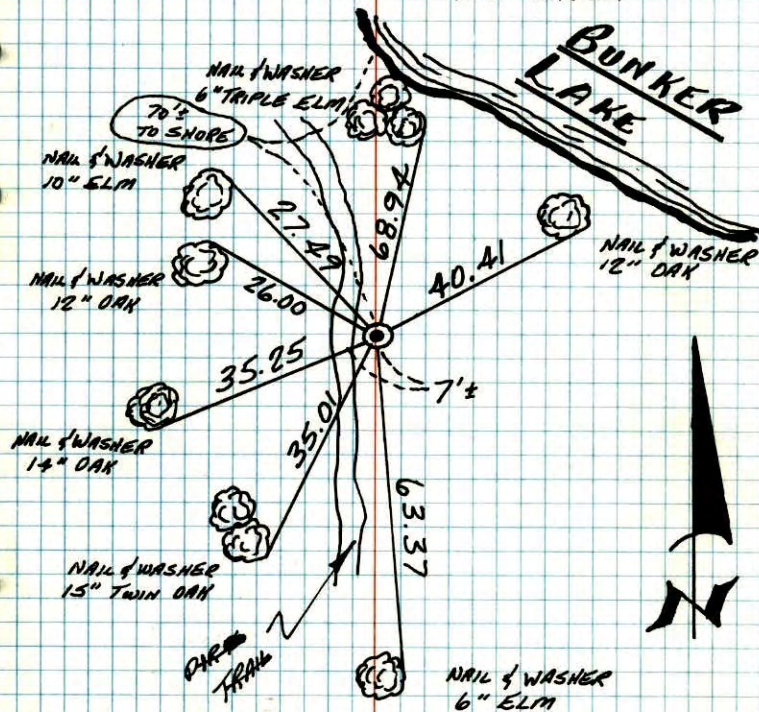
JA
JA

NO. 448

TELEPHONE

W.C. ON EAST LINE SEC 35-T32-R24

SOUTHWEST SIDE OF BUNKER LAKE

SET CAST IRON MONUMENT (DOWN D.F.) FROM
AREA RESURVEY10 MAY 67
M.D. ANDERSON
H.J. LARSON

TIE CHECK	TIE CHECK
6-16-76	6-12-79
G. ADAMS	B. STEPHENS
B. GOETZKO	D. STEPHENS
B. SANDERUD	P. ROSS

TEMPERATURE CORRECTED
AND HORIZONTALLY
TAPED MEASUREMENTSROLAND W. ANDERSON
COUNTY SURVEYOR
ANOKA COUNTY, MINNESOTA

W.C. ON EAST LINE SEC. 35-T32-R24

SOUTH SIDE OF BUNKER LAKE

SET C.I. MON (DOWN 0.4) FROM AREA RESURVEY

DIRT TRAIL

BUNKER LAKE

6" TRIPLE ELM NAIL AND WASHER

70'3 TO SHORE

12" OAK NAIL AND WASHER

CAST IRON MONUMENT

14" OAK NAIL AND WASHER

MAY 10, 1967

M.D. ANDERSON
H.J. LARSON

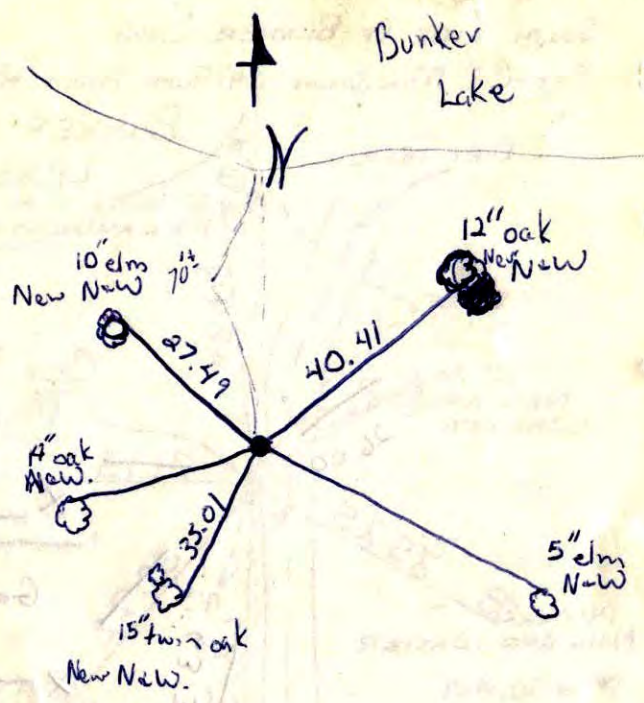
TEMP. 50°
TAPE # 5

Tie Check
July 23, 1968
D. Powell
P. Pich

MORE TIES ON BACK

TEMPERATURE CORRECTED
AND HORIZONTALLY
TAPED MEASUREMENTS

ROLAND W. ANDERSON
COUNTY SURVEYOR
ANOKA COUNTY, MINNESOTA



MORE TIES ON BACK

