

CERTIFICATE OF LOCATION OF GOVERNMENT CORNER

County of Anoka

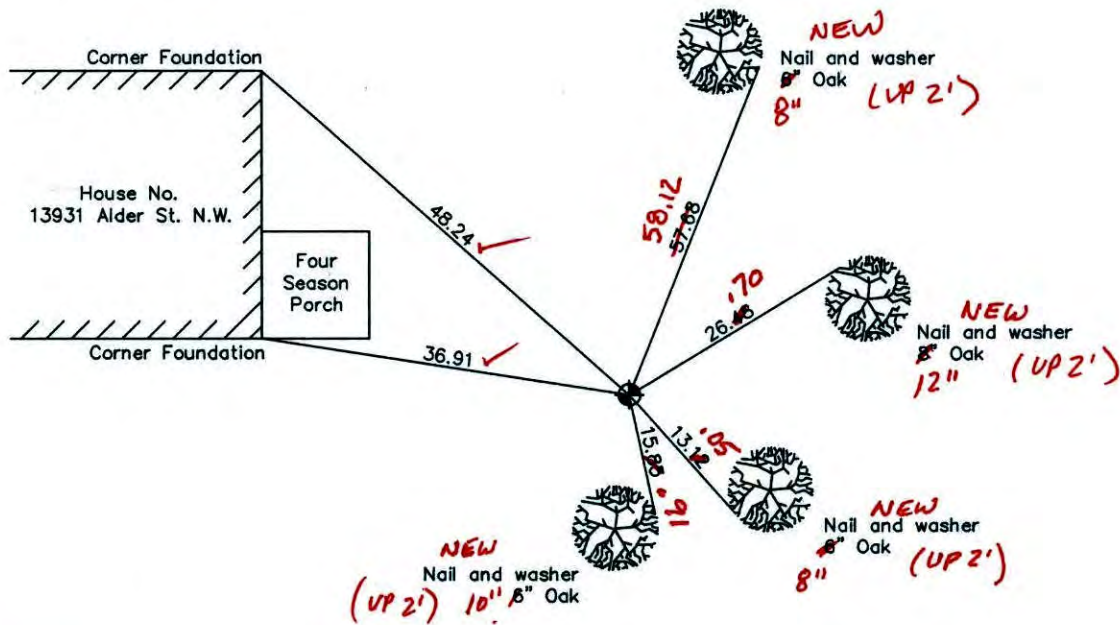
State of Minnesota

Northeast Corner of Sec. 36 Township 32 Range 24

I hereby certify that on the 13th day of September, 1960, I found the described corner which was evidenced by a granite monument

and I further certify that to perpetuate the location of said corner, I did, at the exact location thereof, place a permanent marker consisting of a cast iron monument ✓

which reference or witness monuments are located in the manner following:



1-31-11
BK-55
TAPED

Revised date

11/19/01

N.A.D. 1983 Co-ordinates

County Project Co-ordinates	State Plane Co-ordinates
Northing <u>169613.6568</u>	Y _____
Easting <u>500278.2289</u>	X _____

Date 11/19/01

CERTIFICATE OF LOCATION OF GOVERNMENT CORNER

County of Anoka

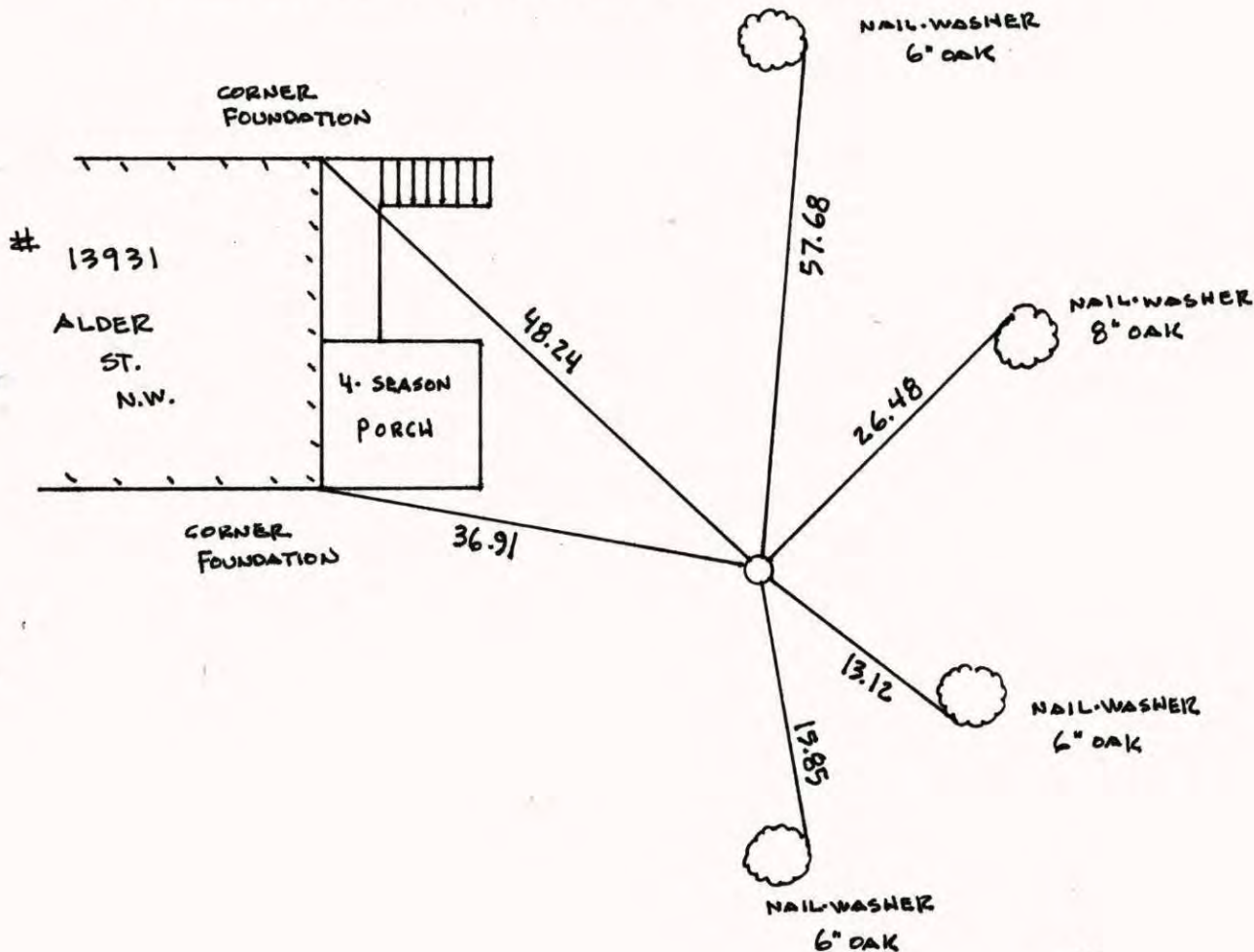
State of Minnesota

NORTHEAST Corner of Sec. 36 Township 32 Range 24

I hereby certify that on the 13th day of SEPTEMBER, 1960, I found the described corner which was evidenced by GRANITE MONUMENT

and I further certify that to perpetuate the location of said corner, I did, at the exact location thereof, place a permanent marker consisting of CAST IRON MONUMENT

which reference or witness monuments are located in the manner following:



Revised date	Revised date	Revised date
7-13-81		
11-19-01		

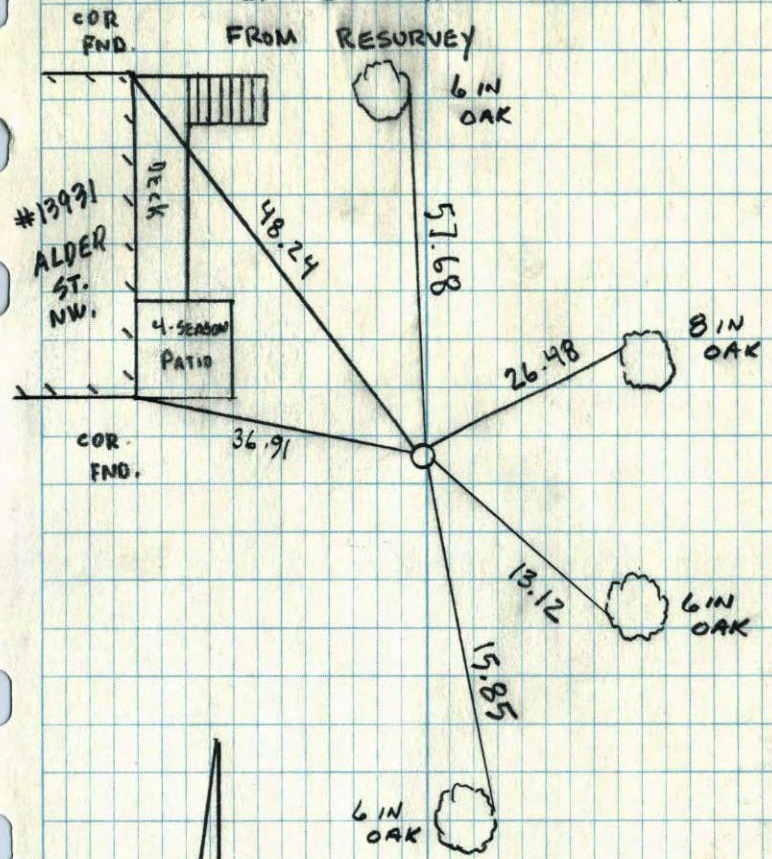


NORTHEAST COR. SEC 36 T 32 R 24

GPS TO RESET POSITION DUE TO CONST.

SET CAST IRON MONUMENT

FROM RESURVEY



#13991
ALDER
ST.
NW.

COR
END.



11-19-01
SIMMER
B. KLEMZ