

# CERTIFICATE OF LOCATION OF GOVERNMENT CORNER

County of Anoka

State of Minnesota

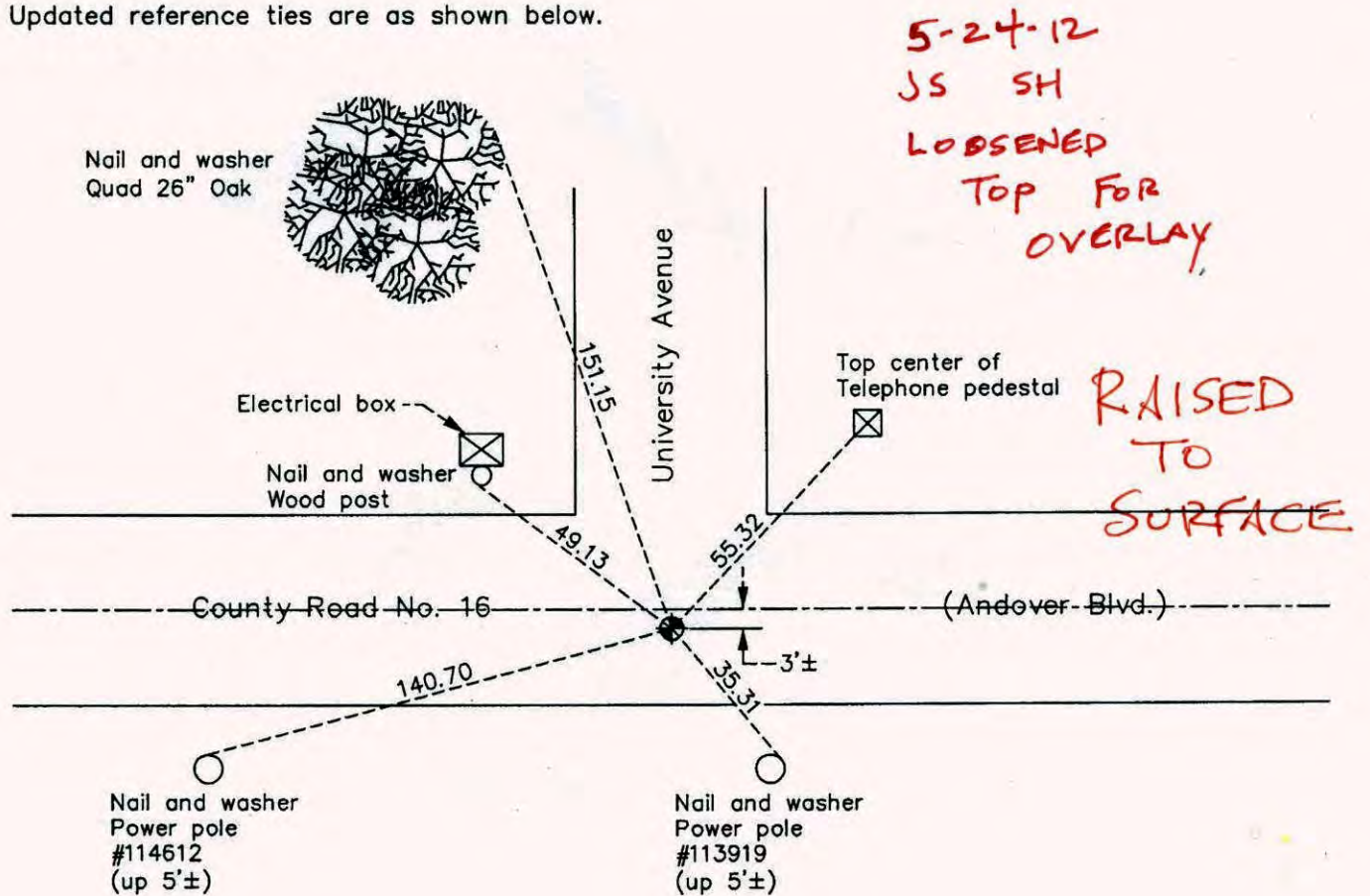
## East 1/4 Corner of Sec. 25 Township 32 Range 24

On the 14th day of September, 1960, the described corner was evidenced by a concrete monument

and to perpetuate the location of said corner, at the exact location thereof, a permanent marker was placed consisting of a cast iron monument

AND on the 22nd day of October, 2010, said permanent marker was found flush with the surface and the ties were updated

Updated reference ties are as shown below.



Revision Date

6/28/11

N.A.D. 1983 Coordinates  
(1996 Adjustment)

County Project Coordinates	
Northing	172197.3230
Easting	500288.9357
Date	10/24/00

I hereby certify that this United States public land survey monument record is correct and complete to the best of my knowledge and belief.

*Larry D. Hoium* Date 6/28/11

Larry D. Hoium, Anoka County Surveyor

Minnesota License Number 18165

Co Rd 16 from  
CSAH 78 to TH 65

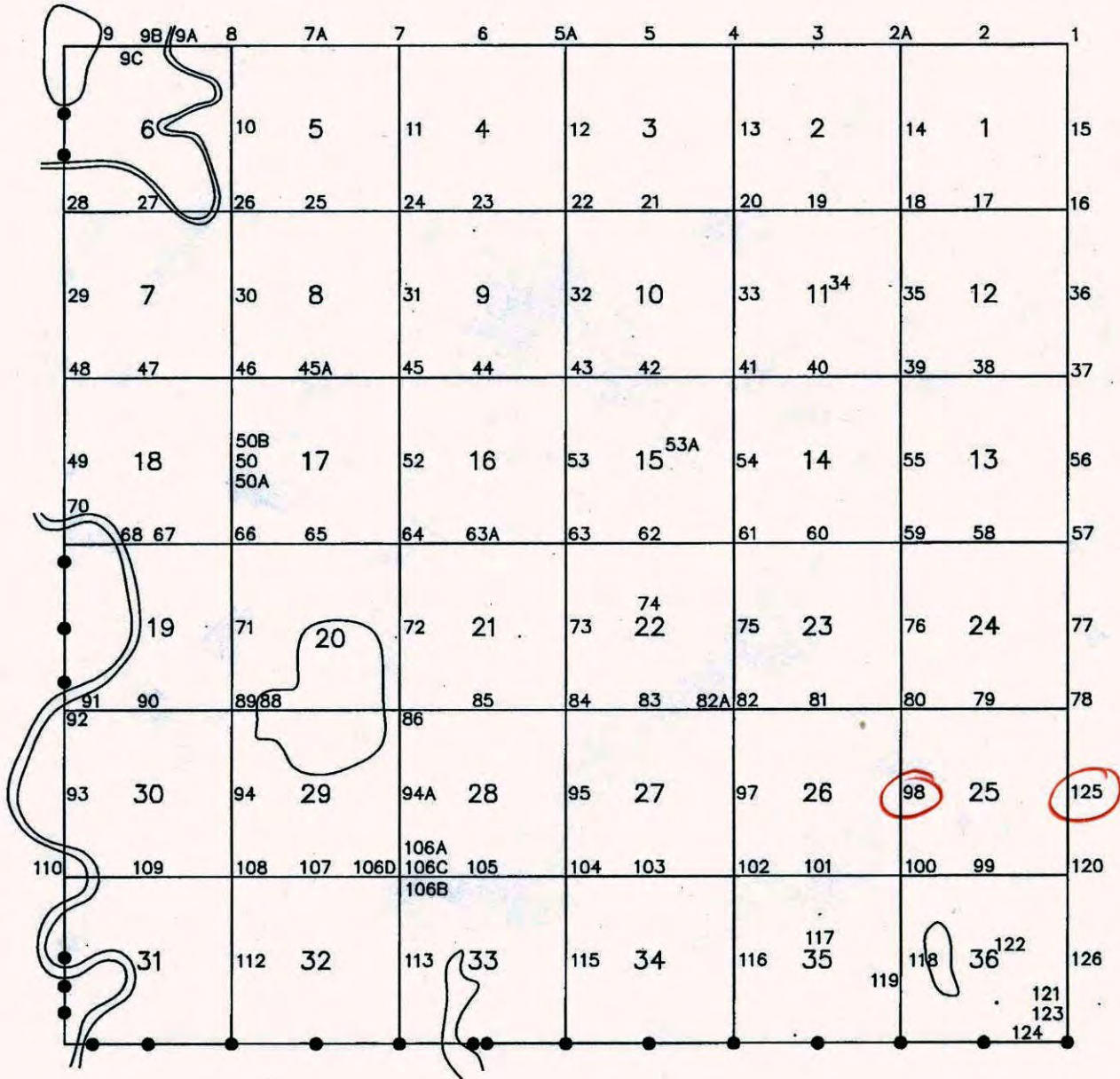
Sec 25

5/22/12

→ Overlay only

ANDOVER T-32 R-24

LOOSEN



# CERTIFICATE OF LOCATION OF GOVERNMENT CORNER

County of Anoka

State of Minnesota

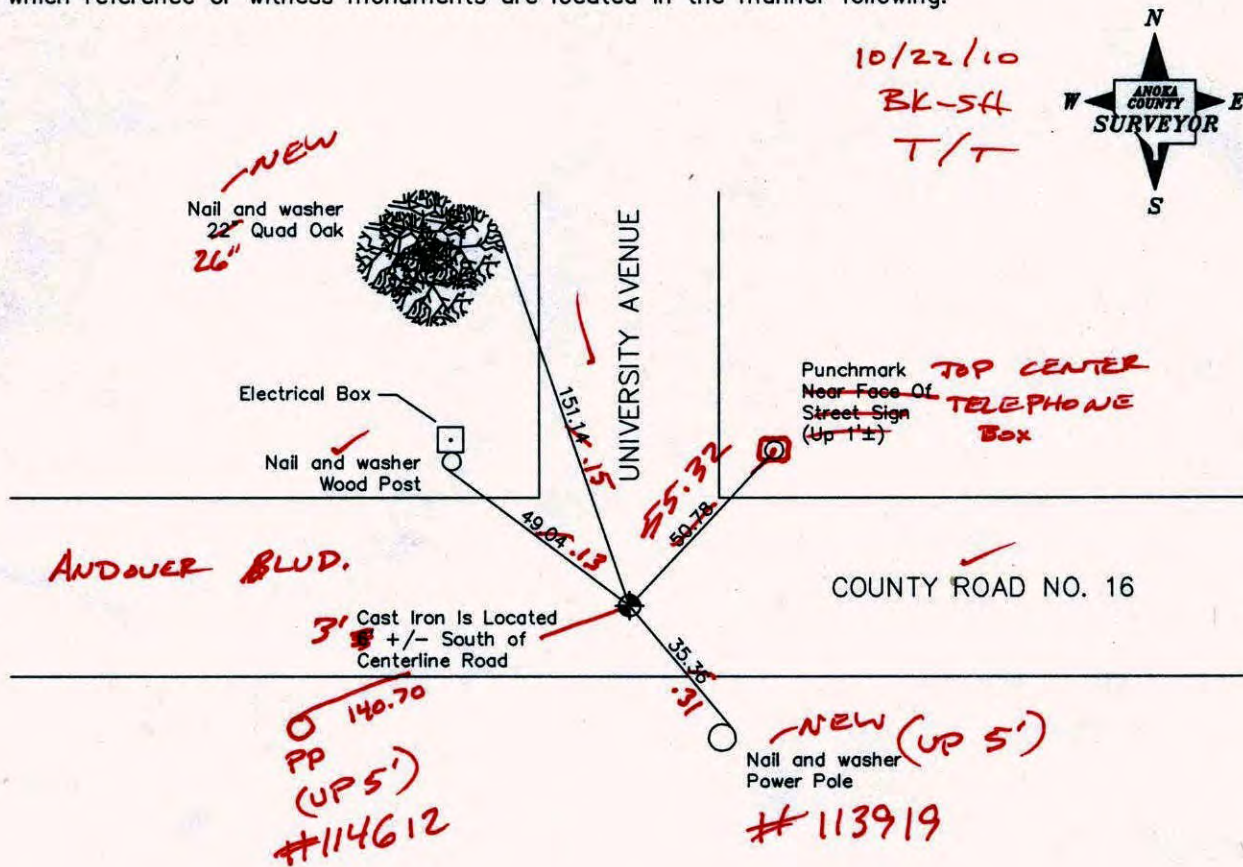
East 1/4 Corner of Sec. 25 Township 32 Range 24

I hereby certify that on the 14th day of September, 1960, I found the described corner which was evidenced by a concrete monument

and I further certify that to perpetuate the location of said corner, I did, at the exact location thereof, place a permanent marker consisting of a cast iron monument

*(FLUSH)*

which reference or witness monuments are located in the manner following:



Revised date

7/2/87
10/27/91
10/24/00

N.A.D. 1983 Co-ordinates

County Project Co-ordinates	State Plane Co-ordinates
Northing 172197.3230	Y _____
Easting 500288.9357	X _____

Date 10/24/00

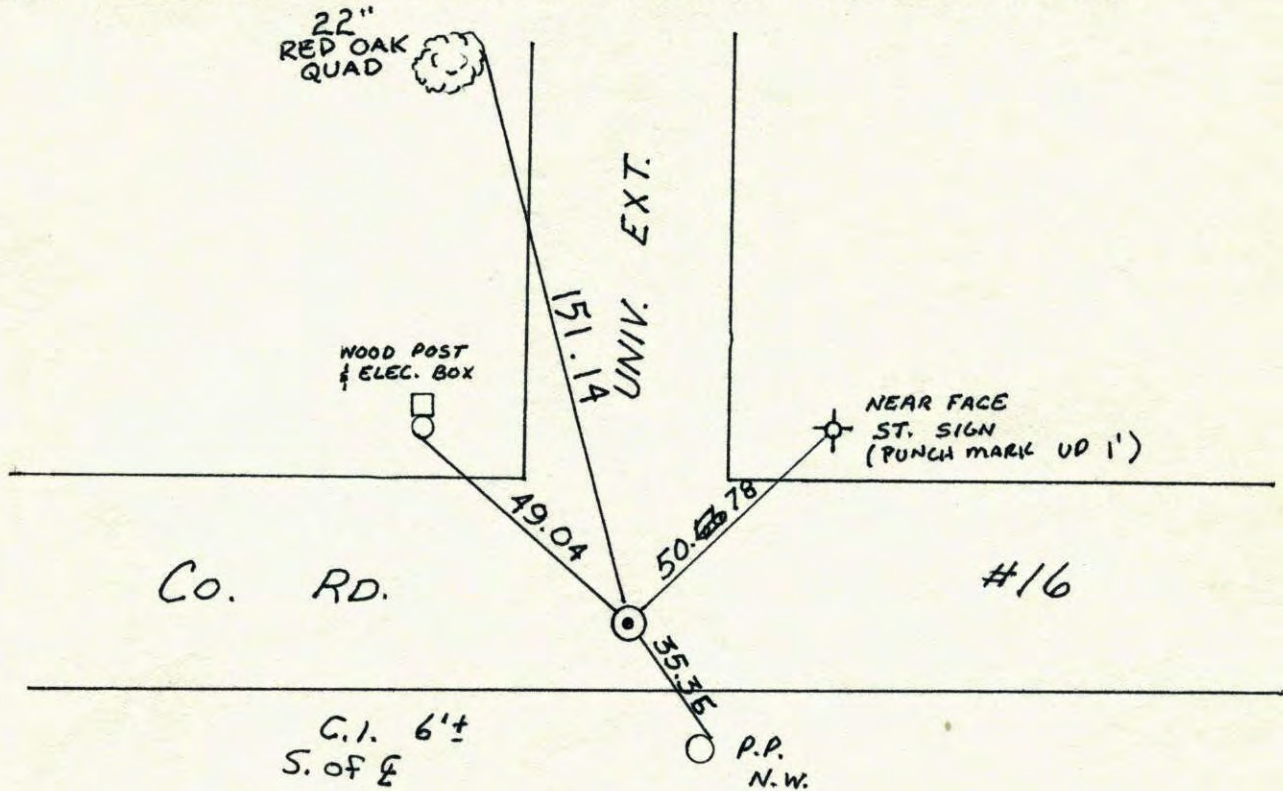
# CERTIFICATE OF LOCATION OF GOVERNMENT CORNER

EAST 25 24  
 County of Anoka State of Minnesota  
~~WEST~~ QTR. Corner of Sec. 30 Township 32 Range 23

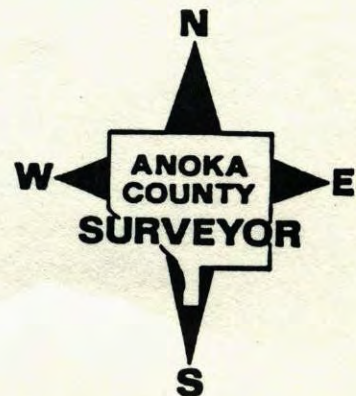
I hereby certify that on the 14 day of SEPT., 1960, I found the described corner which was evidenced by CONCRETE MON.

and I further certify that to perpetuate the location of said corner, I did, at the exact location thereof, place a permanent marker consisting of CAST IRON MON.

which reference or witness monuments are located in the manner following:

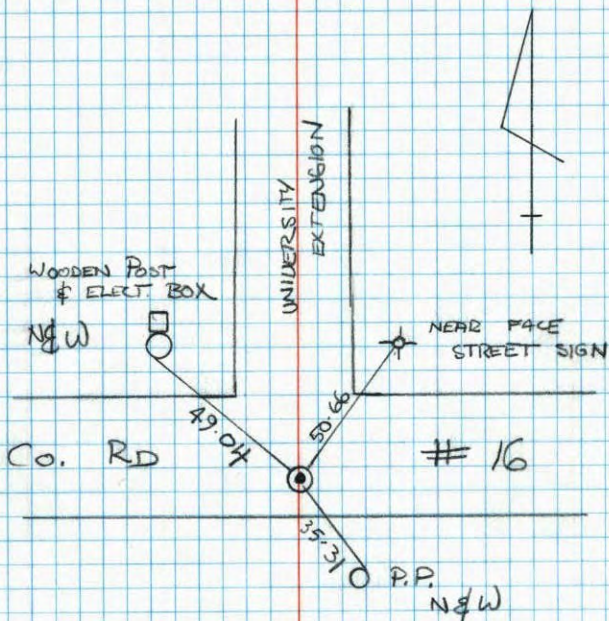


Revised date	Revised date	Revised date
7-21-64	10-27-91	
8-8-66	10-24-00	
5-20-71		
8-21-73		
6-16-75		
6-16-78		
7-2-87		



WEST 1/4 COR SEC 30. T32 R23

RETIE CAST IRON MONUMENT



HL-MS  
10-27-91

W 1/4 Cor. Sec 30-T32-R23

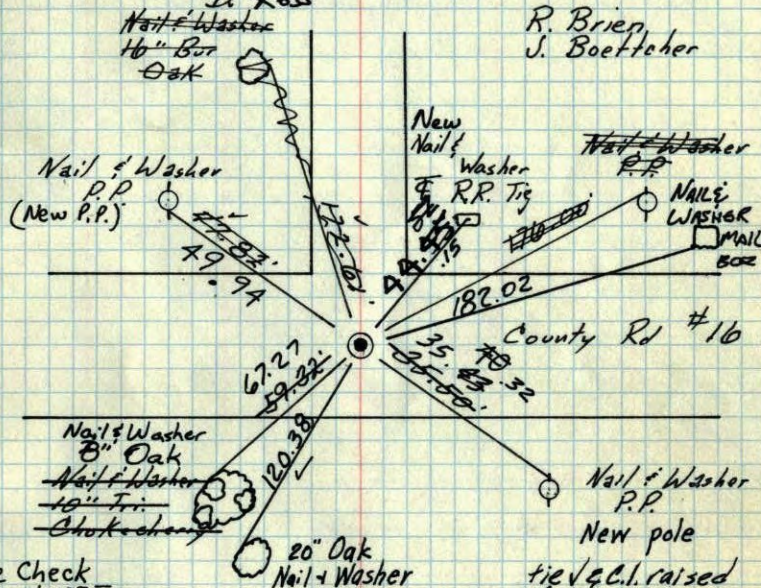
Conc. Mon. down 2.5'

Tie Check  
June 16, 1978  
D. Dahl  
T. Stephens  
M. Kisnow

Placed  
Cast Iron Mon. Flush

TIE CHECK  
July 12, 1984  
G. Lips, R. Bennett  
D. Ross

Tie Check  
May 20, 1971  
R. Brien  
J. Boettcher



Tie Check  
June 16, 1975  
B. Sannerud  
G. Adams

Bill Rogers  
Ralph Robinson

Retie 7/21/64  
M.D. Anderson  
R. Carlson

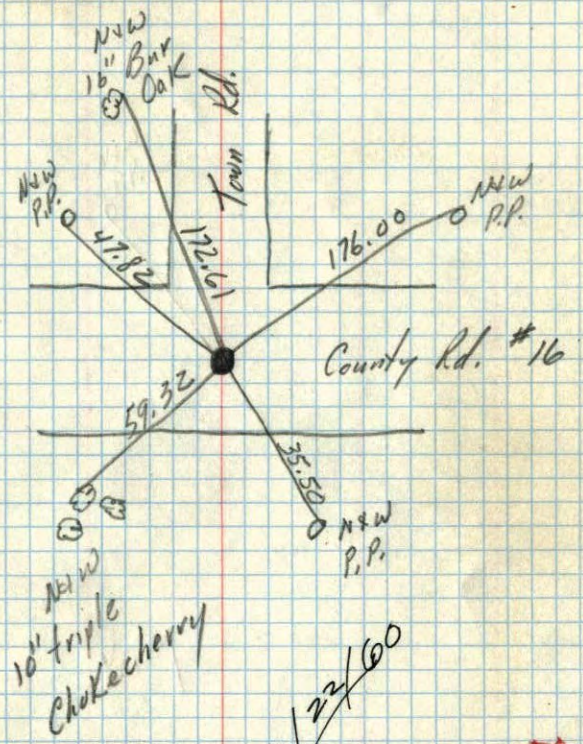
tie & c.l. raised  
Aug. 21, 1973  
M.D. Anderson

TEMPERATURE CORRECTED  
AND HORIZONTALLY  
TAPED MEASUREMENTS

Tie Check  
Aug. 8, 1966  
H. Larson  
R. Smith

ROLAND W. ANDERSON  
COUNTY SURVEYOR  
ANOKA COUNTY, MINNESOTA

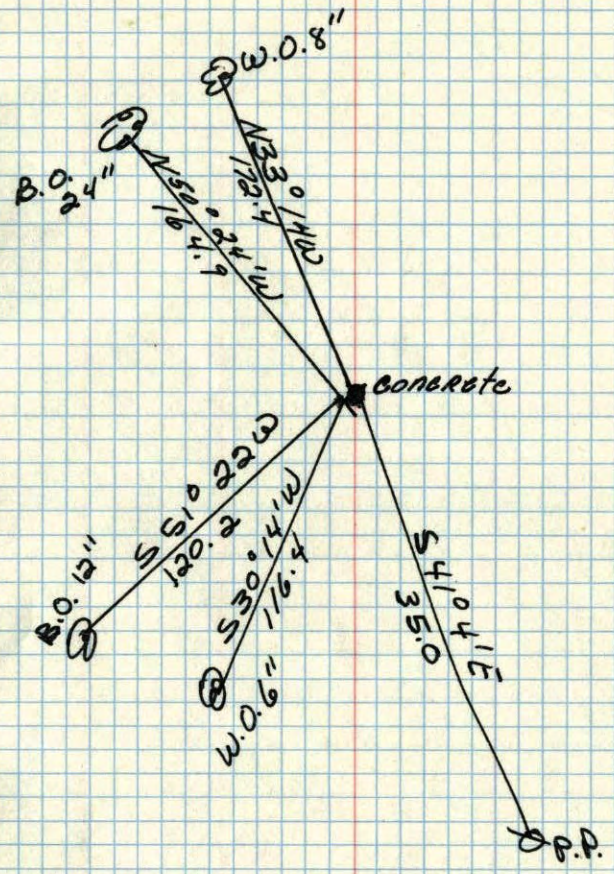
W<sup>1</sup>/<sub>4</sub> Cor. Sec. 30 T32 R23  
 Cor. Mon. down 5 1/2' Placed  
 Cast Iron Mon. flush



9/22/60

TC  
 tang. 68°  
 9/14/60  
 Bill Rogers  
 Ralph Robinson

W<sup>1</sup>/<sub>4</sub> cor. of Sec. 30 T. 32 R. 23  
 Concrete Monument



Oct. 27, 1943  
 CARTWRIGHT