

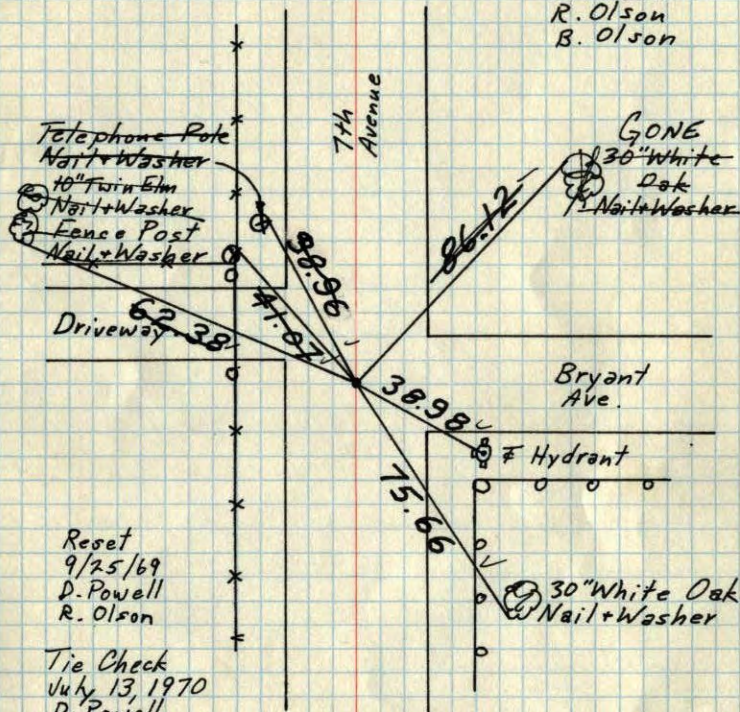
# Center of Sec. 31-T32-R24

Iron removed by sewer construction.

PK Nail in place. PK's 2.00'

North + East.

July 11, 1969  
D. Powell  
R. Olson  
B. Olson



Reset  
9/25/69  
D. Powell  
R. Olson

Tie Check  
July 13, 1970  
D. Powell  
R. Brien

Ties Checked  
July 10, 1972  
B. Olson  
J. Boettcher  
D. Brien

TIE CHECK  
6-11-76  
G ADAMS  
B SANHERUD  
S BRIEN

TIE CHECK  
6-21-82  
P. ROSS  
P. HORNBY  
J. BEIER

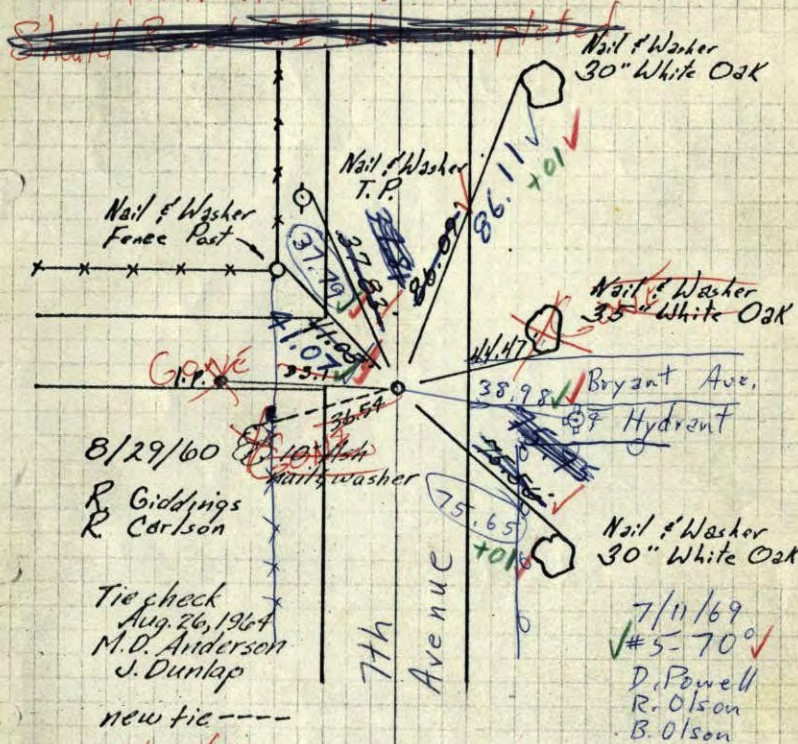
TEMPERATURE CORRECTED  
AND HORIZONTALLY  
TAPED MEASUREMENTS

# Center Cor. Sec 31-T32-R24

Iron down .3'

Found and proved by Lundstrom  
in July 1956

IRON Removed by sewer construction



8/29/60  
R. Giddings  
R. Carlson

Tie check  
Aug. 26, 1964  
M.D. Anderson  
J. Dunlap

new tie ---  
7/25/68  
D. Powell  
P. Piek

7/11/69  
#5-70  
D. Powell  
R. Olson  
B. Olson

TEMPERATURE CORRECTED  
AND HORIZONTALLY  
TAPED MEASUREMENTS

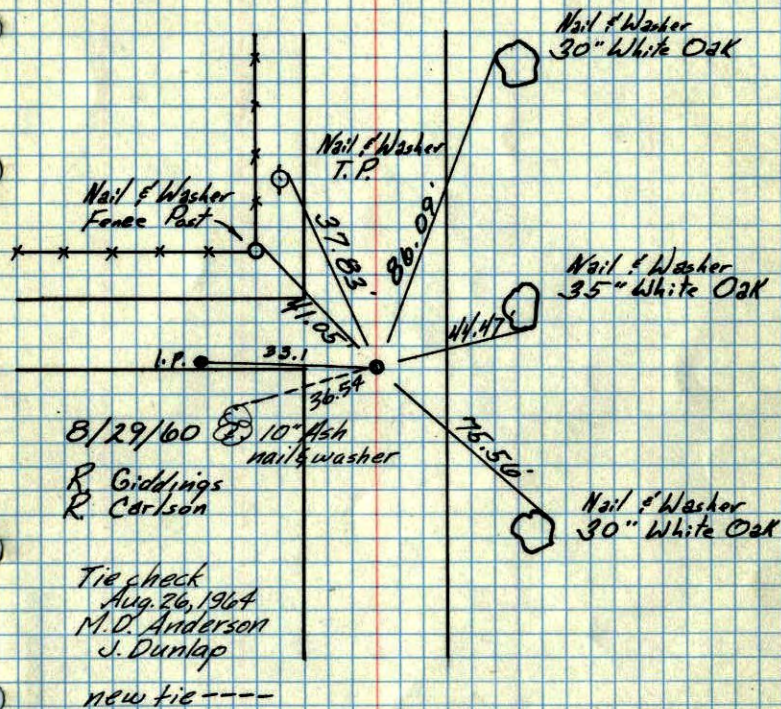
PK in place

ROLAND W. ANDERSON  
COUNTY SURVEYOR  
ANOKA COUNTY, MINNESOTA

Center Cor. Sec 31-T32-R24

Iron down .3'

Found and proved by Lundstrom  
in July 1956



Tie check  
Aug. 26, 1964  
M.D. Anderson  
J. Dunlap

new tie----

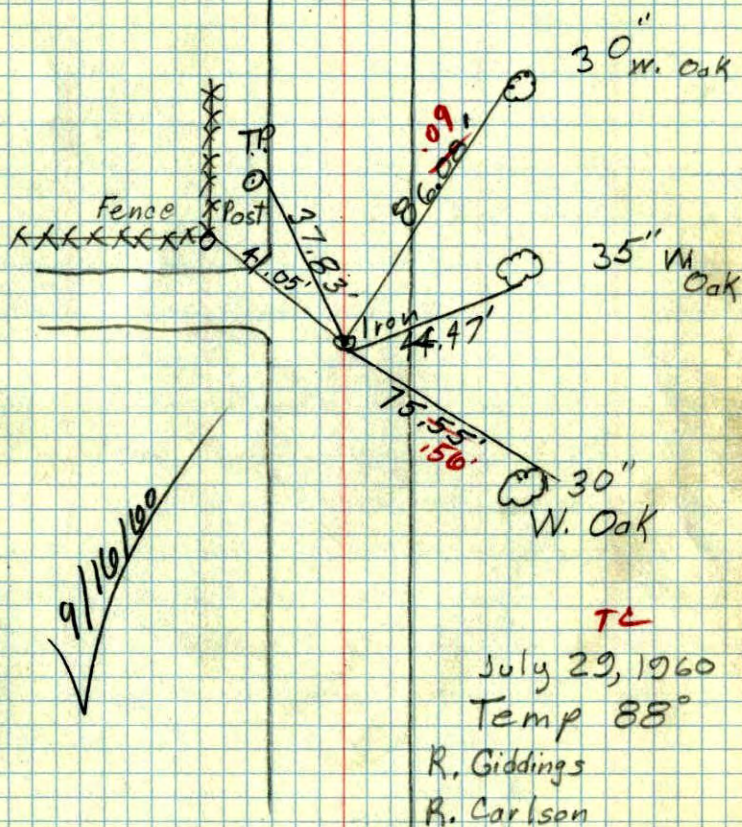
TEMPERATURE CORRECTED  
AND HORIZONTALLY  
TAPED MEASUREMENTS

ROLAND W. ANDERSON  
COUNTY SURVEYOR  
ANOKA COUNTY, MINNESOTA

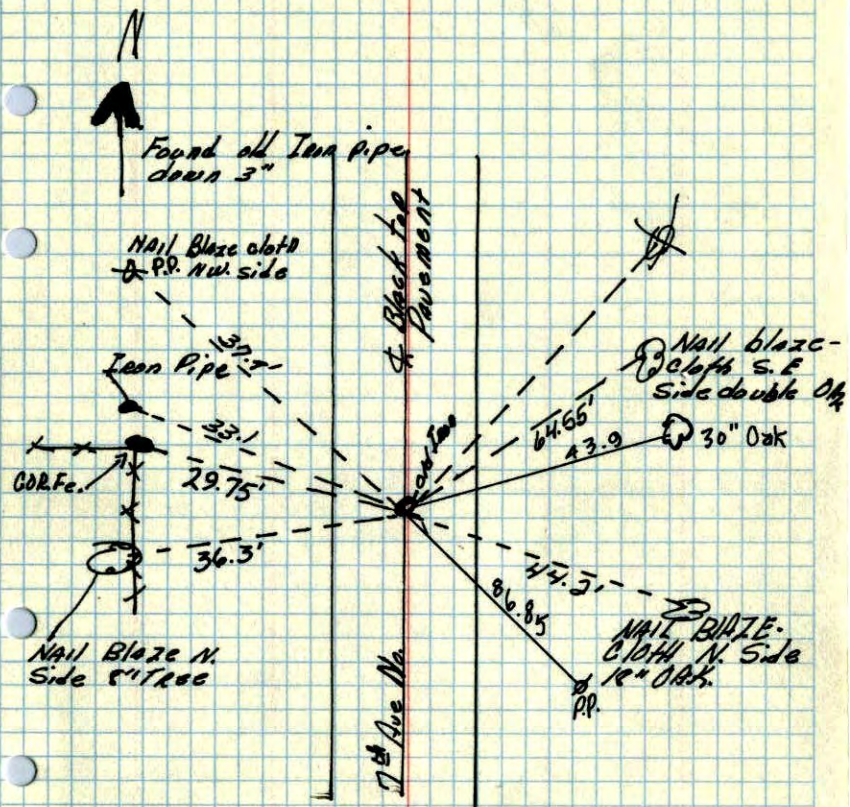
Center Corn Sec. 31, T.32, R.24

(Grow)

Iron down .3'



Center of Section 31 + 32, R24 ✓



— Hoium

July, 1956  
W. Lundstrom

Lundstrom

July - 1956

Center Sec. 31-T. 32-R24  
Found old iron pipe-down 3"