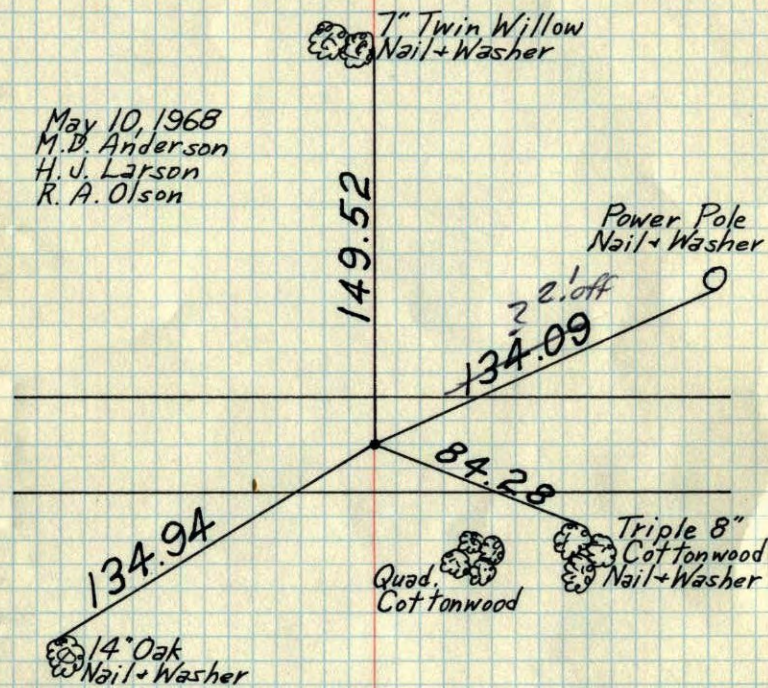


Center of Sec. 33-T32-R24

P.K. set by Anoka County Surveyor

Ran N&S - E&W 1/4 lines PK's 2.00' North + East.

May 10, 1968
M.D. Anderson
H.J. Larson
R.A. Olson



Tie Check
July 23, 1968
D. Powell
P. Pieh

TEMPERATURE CORRECTED
AND HORIZONTALLY
TAPED MEASUREMENTS

ROLAND W. ANDERSON
COUNTY SURVEYOR
ANOKA COUNTY, MINNESOTA

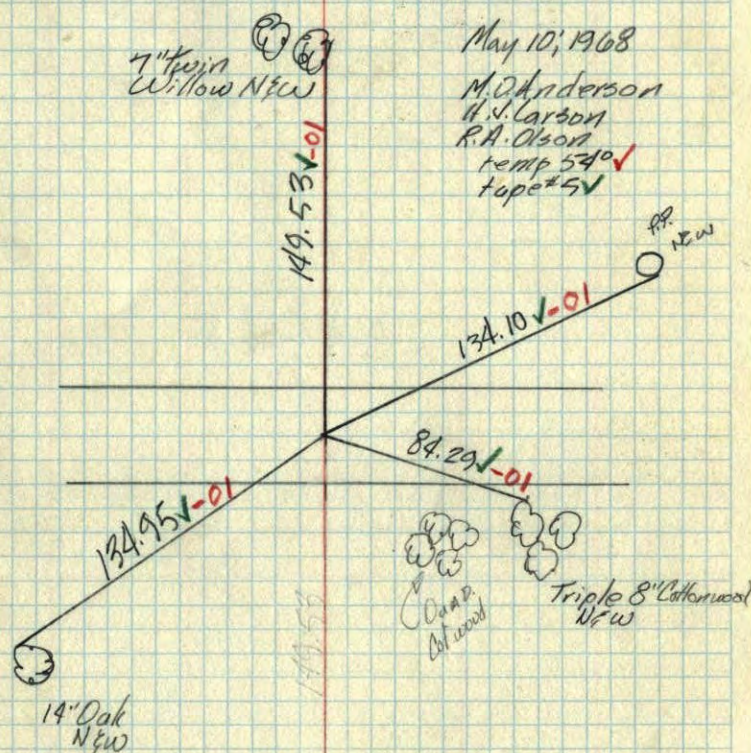
Center of Sec. 33-T32-R24

P.K. set by Anoka Co. Surveyor N
Ran N&S - E&W 1/4 lines



May 10, 1968

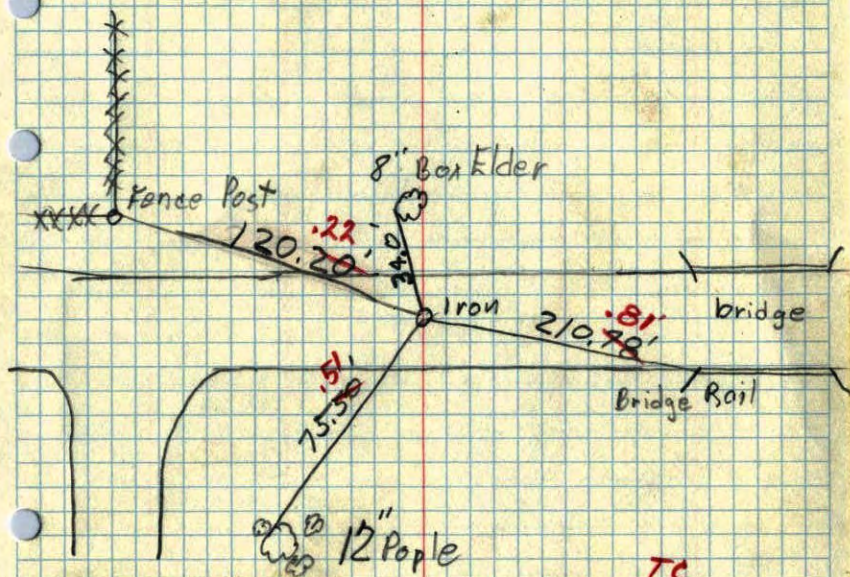
M.D. Anderson
H.J. Larson
R.A. Olson
temp 54.0 ✓
tape #5 ✓



Tie Check
July 23, 1968
D. Powell
P. Pieh

Center Corn. Sec. 33, T. 32, R. 24

(Grow)
Iron (down 1')



TC
July 29, 1960

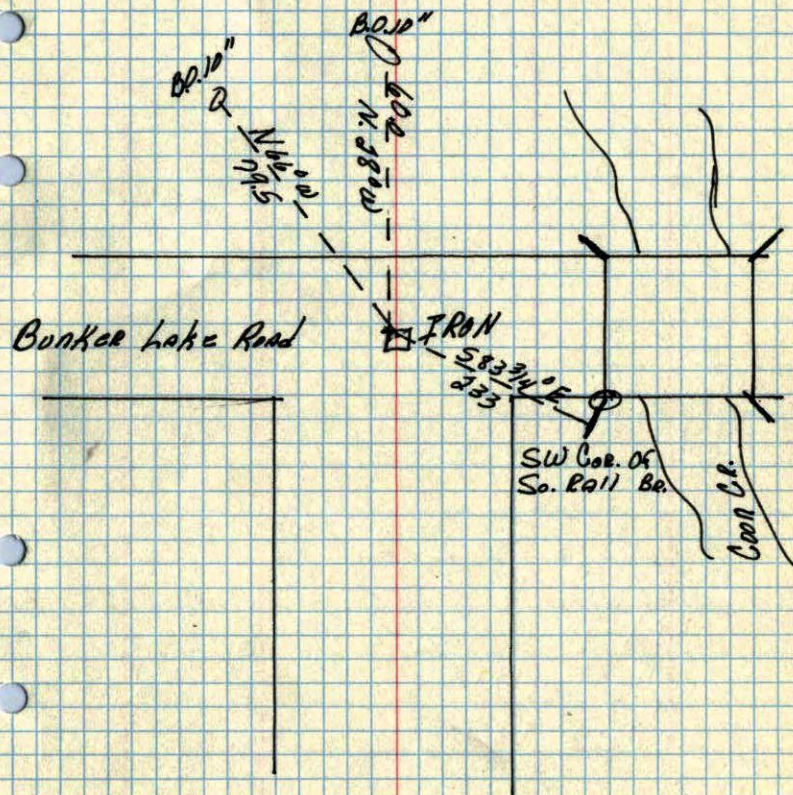
Temp 90°

R. Giddings

R. Carlson

19/29/60

Center Corner of Sec. 33 T32 R24



ANOKA CO. HWY. DEPT