

CERTIFICATE OF LOCATION OF GOVERNMENT CORNER

County of Anoka

State of Minnesota

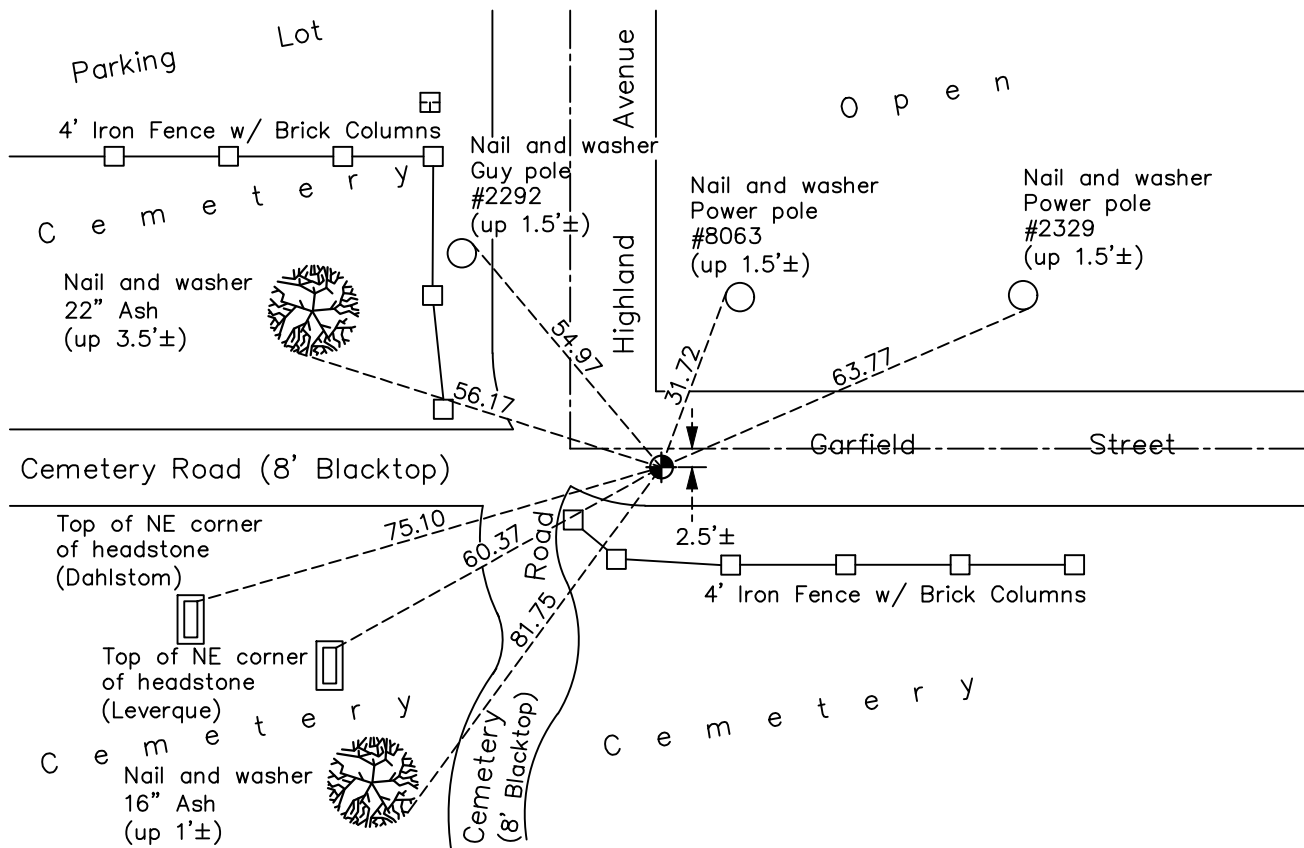
Northwest Corner of Sec. 1 Township 31 Range 25

On the 11th day of August, 1966, the described corner was evidenced by a broken concrete monument

and to perpetuate the location of said corner, at the exact location thereof, a permanent marker was placed consisting of a cast iron monument

AND on the 29th day of June, 2020, said permanent marker was found down 0.2'± and the ties were updated

Updated reference ties are as shown below.



Revision Date
7/06/2020

N.A.D. 1983 Coordinates
(1996 Adjustment)

County Project Coordinates	
Northing	<u>164617.7635</u>
Easting	<u>463246.9249</u>
Date	<u>4/07/00</u>

I hereby certify that this United States public land survey monument record is correct and complete to the best of my knowledge and belief.

David M Zieglsmeier Date 1/6/22

David M. Zieglsmeier, Anoka County Surveyor
Minnesota License Number 46179

HISTORY OF GOVERNMENT CORNER

Page No. 3

County of Anoka

State of Minnesota

Northwest Corner of Sec. 1 Township 31 Range 25

CORNER HISTORY:

July 13, 1943 - H.A. Cartwright found concrete monument flush. Established ties to monument.

March 29, 1963 - Found concrete monument flush with the surface and updated ties.

March 18, 1966 - Found concrete monument missing. Set P.K. nail in corner position using remaining ties and set P.K. nails 2.00' North and East. Updated ties.

August 11, 1966 - Found concrete monument broken off and down 1.2'. Monument was 0.06' south and 0.01' east of P.K. nails set on March 18, 1966. Set cast iron monument over concrete monument flush with the surface and updated ties. Set P.K. nails 2.00' North and East.

August 7, 1970 - Found cast iron monument and updated ties.

July 15, 1974 - Found cast iron monument and updated ties.

June 27, 1977 - Found cast iron monument and updated ties.

July 9, 1980 - Found cast iron monument and updated ties.

June 16, 1986 - Found cast iron monument and updated ties.

August 9, 1990 - Found cast iron monument and updated ties.

August 19, 1994 - Found cast iron monument and updated ties.

April 7, 2000 - Found cast iron monument and updated ties. Established NAD 1983 (1996 adj.) Anoka County project coordinates by static GPS methods.

September 30, 2010 - Found cast iron monument and updated ties.

March 16, 2015 - Found cast iron monument down 0.2'±. Verified position by VRS GPS methods. Updated ties.

June 29, 2020 - Found cast iron monument down 0.2'±. Verified position by VRS GPS methods. Updated ties.