

CERTIFICATE OF LOCATION OF GOVERNMENT CORNER

County of Anoka

State of Minnesota

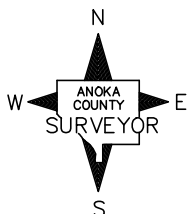
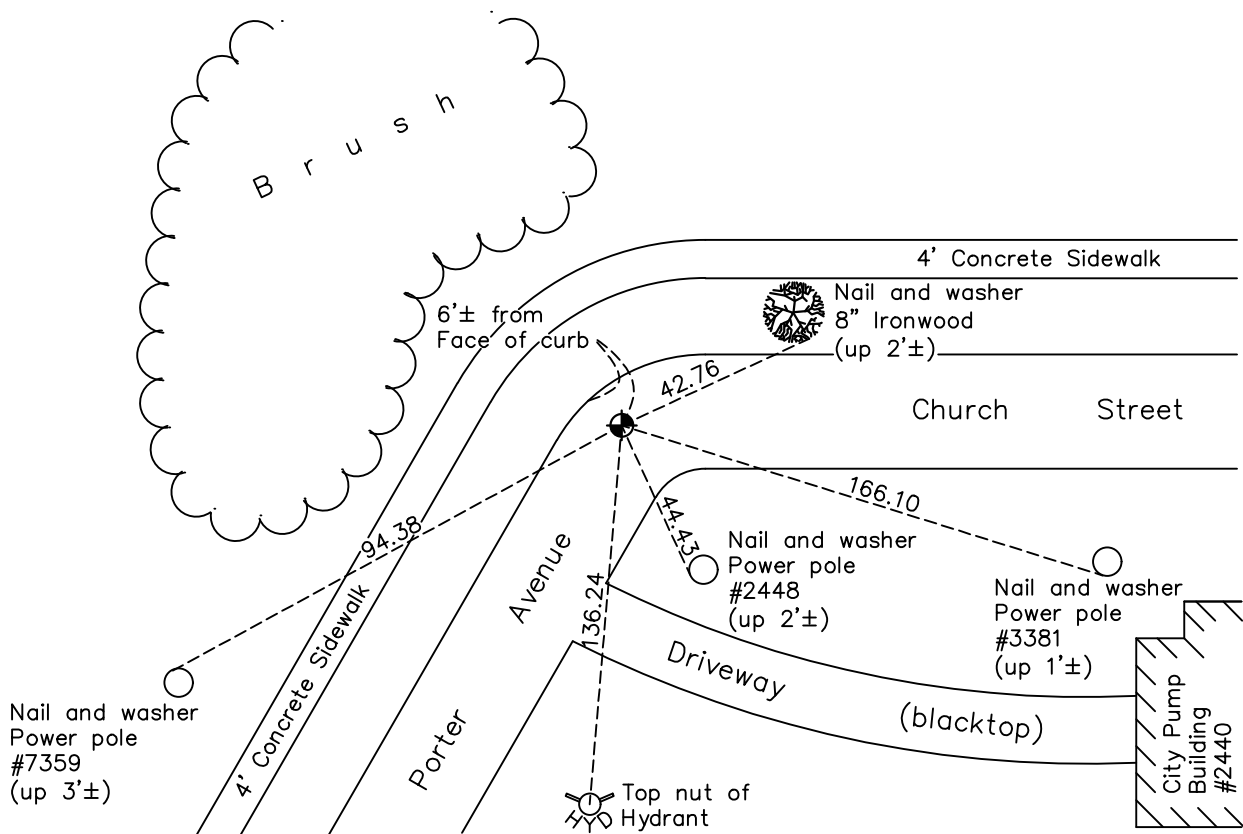
East 1/4 Corner of Sec. 2 Township 31 Range 25

On the 27th day of June, 1957, the described corner was evidenced by a 1" iron pipe

and to perpetuate the location of said corner, at the exact location thereof, a permanent marker was placed consisting of a cast iron monument

AND on the 28th day of August, 2020, said permanent marker was found broken after road construction. Reset C.I.M. flush using static GPS methods. Updated ties.

Updated reference ties are as shown below.



Revision Date

09/28/2020

N.A.D. 1983 Coordinates
(1996 Adjustment)

County Project Coordinates	
Northing	<u>161960.8745</u>
Easting	<u>463237.6777</u>
Date	<u>6/19/01</u>

I hereby certify that this United States public land survey monument record is correct and complete to the best of my knowledge and belief.

David M. Zieglermeier Date 1/7/22

David M. Zieglermeier, Anoka County Surveyor

Minnesota License Number 46179

HISTORY OF GOVERNMENT CORNER

Page No. 4

County of Anoka

State of Minnesota

East 1/4 Corner of Sec. 2 Township 31 Range 25

CORNER HISTORY:

June 27, 1957 - Found flanged iron monument 8 feet south and 2 feet east of fence corner. Established ties to monument. Tie sheet indicates that a 20" Oak is the corner.

September 25, 1962 - Set 3/4" red iron pipe 0.8' east of the center of a 24" Oak stump believed to be the same Oak shown on an 1873 survey recorded in Book 13, Page 338. Top of iron pipe was set flush with the top of stump.

July 28, 1966 - Found 3/4" red iron pipe and updated ties.

August 7, 1970 - Found 1" iron pipe up 0.3'±. Top of pipe is 0.4'± from top of stump to the west.

July 15, 1974 - Found 1" iron pipe and updated ties.

June 27, 1977 - Found 1" iron pipe and updated ties.

July 9, 1980 - Found 1" iron pipe and updated ties.

August 18, 1980 - Found 1" iron pipe missing. Reset position of corner cast iron monument using ties and updated ties.

August 8, 1984 - Found cast iron monument and established additional ties prior to construction.

September 21, 1984 - Set cast iron monument after construction using ties and updated ties.

June 16, 1986 - Found cast iron monument flush with the surface and updated ties.

August 9, 1990 - Found cast iron monument and updated ties.

August 19, 1994 - Found cast iron monument and updated ties.

June 19, 2001 - Found cast iron monument and established NAD 1983 (1996 Adjustment) Anoka County Project Coordinates by Static GPS methods. Updated ties.

September 30, 2010 - Found cast iron monument flush with the surface and updated ties.

March 16, 2015 - Found cast iron monument flush with the surface and updated ties.

June 29, 2020 - Found cast iron monument broken. Monument removed due to road construction.

August 27, 2020 - Reset cast iron monument flush after road construction using static GPS methods.

August 28, 2020 - Found cast iron monument. Verified position using VRS GPS methods. Updated ties