

CERTIFICATE OF LOCATION OF GOVERNMENT CORNER

County of Anoka

State of Minnesota

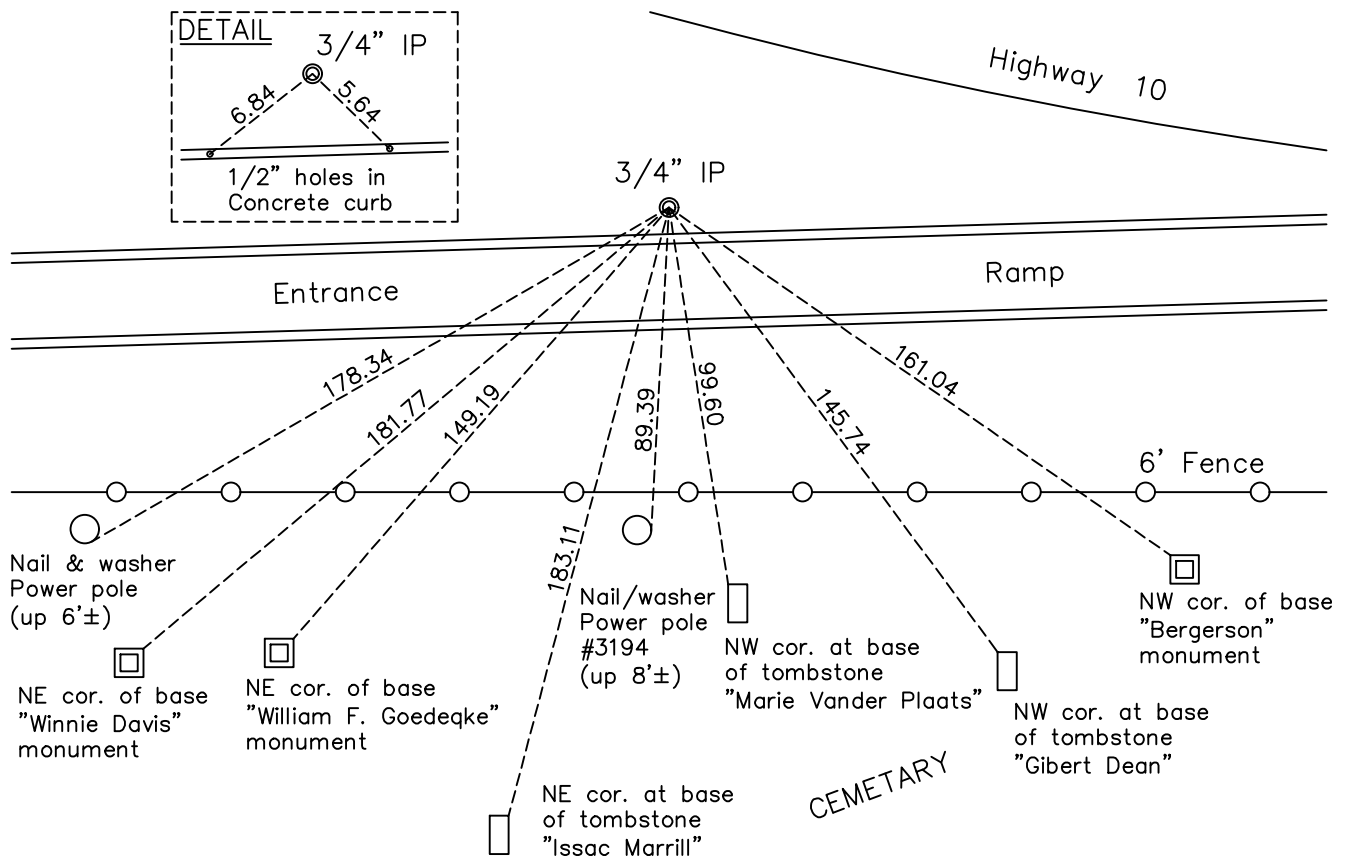
Center Corner of Sec. 1 Township 31 Range 25

On the 26th day of June, 1963, the described corner was evidenced by a 3/4" iron pipe

and to perpetuate the location of said corner, at the exact location thereof, a permanent marker was placed consisting of a 3/4" iron pipe

AND on the 18th day of December, 2020, said permanent marker was found and the ties were updated

Updated reference ties are as shown below.



Revision Date

9/20/2021

N.A.D. 1983 Coordinates
(1996 Adjustment)

County Project Coordinates	
Northing	161967.1637
Easting	465879.7409
Date	2001

I hereby certify that this United States public land survey monument record is correct and complete to the best of my knowledge and belief.

David M Zieglermeier Date 1/6/22

David M. Zieglermeier, Anoka County Surveyor
Minnesota License Number 46179

HISTORY OF GOVERNMENT CORNER

Page No. 5

County of Anoka

State of Minnesota

Center Corner of Sec. 1 Township 31 Range 25

CORNER HISTORY:

June 26, 1963 - Found 3/4" iron pipe found by M.H.D., also tied by N.C. Hoium and set by him. Updated ties.

August 18, 1967 - Found 3/4" iron pipe and updated ties.

August 7, 1970 - Found 3/4" iron pipe and updated ties.

June 27, 1977 - Found 3/4" iron pipe and updated ties.

July 10, 1980 - Found 3/4" iron pipe and updated ties.

June 16, 1986 - Found 3/4" iron pipe and updated ties.

January 25, 1988 - Found 3/4" iron pipe and updated ties.

2001 - Established NAD 1983 (1996 adj.) Anoka County project coordinates by static GPS methods.

December 18, 2020 - Found 3/4" iron pipe and updated ties. Checked position by vRS GPS methods.

January 5, 2021 - Found 3/4" iron pipe and checked position by static GPS methods.