

CERTIFICATE OF LOCATION OF GOVERNMENT CORNER

County of Anoka

State of Minnesota

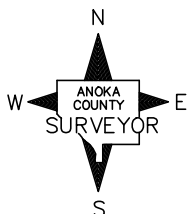
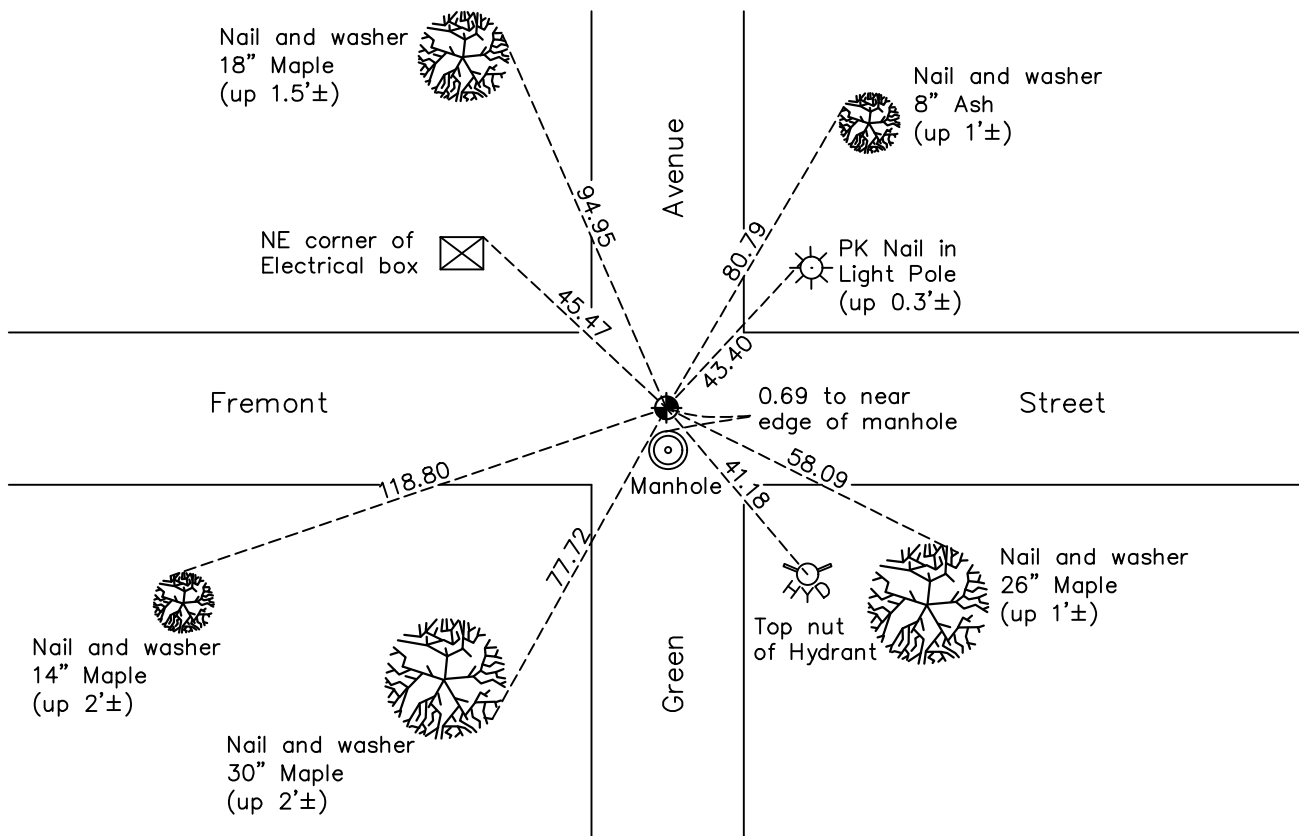
South 1/4 Corner of Sec. 1 Township 31 Range 25

On the 22nd day of January, 1988, the described corner was evidenced by area resurvey

and to perpetuate the location of said corner, at the exact location thereof, a permanent marker was placed consisting of a cast iron monument

AND on the 29th day of June, 2020, said permanent marker was found flush and the ties were updated

Updated reference ties are as shown below.



Revision Date

7/06/2020

N.A.D. 1983 Coordinates
(1996 Adjustment)

County Project Coordinates	
Northing	<u>159315.2652</u>
Easting	<u>465855.8207</u>
Date	<u>6/19/01</u>

I hereby certify that this United States public land survey monument record is correct and complete to the best of my knowledge and belief.

David M Zieglsmeier Date 1/6/22

David M. Zieglsmeier, Anoka County Surveyor

Minnesota License Number 46179

HISTORY OF GOVERNMENT CORNER

Page No. 6

County of Anoka

State of Minnesota

South 1/4 Corner of Sec. 1 Township 31 Range 25

CORNER HISTORY:

January 22, 1988 - Set P.K. nail using area resurvey and platting. Established ties to P.K. nail.

January 27, 1988 - Replaced P.K. nail with a 1/2" iron pipe set on a straight line extended southerly from the North 1/4 corner through a found 3/4" iron pipe at the Center of Section and intersecting an east-west line using area platting. The position of the 1/2" iron pipe is 0.19' west of the P.K. nail. Updated ties.

June 9, 1988 - Replaced 1/2" iron pipe with a cast iron monument. Updated ties.

August 9, 1990 - Found cast iron monument and updated ties.

August 19, 1994 - Found cast iron monument and updated ties.

June 19, 2001 - Found cast iron monument and updated ties. Established NAD 1983 (1996 ad.) Anoka County project coordinates by static GPS methods.

October 1, 2010 - Found cast iron monument and updated ties.

March 16, 2015 - Found cast iron monument and updated ties.

June 29, 2020 - Found cast iron monument flush. Verified position by VRS GPS methods. Updated ties.