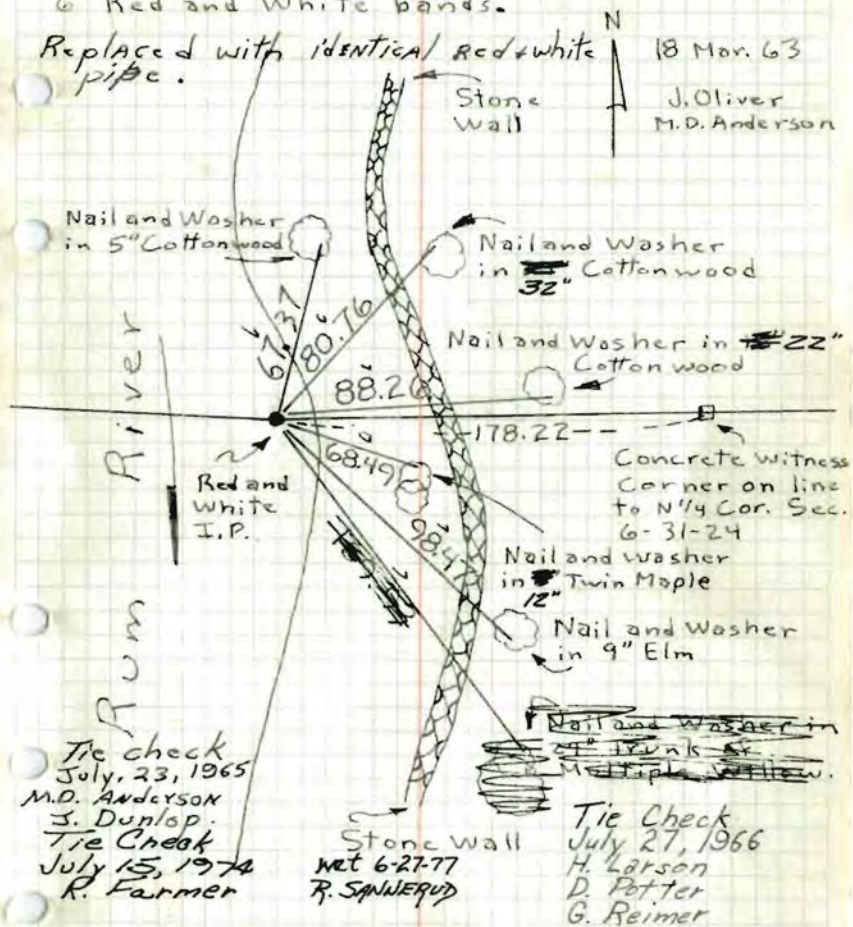


NE Cor. Sec. 1, T31, R25

Set 1 1/2" X 12' I.P. From Resurvey. Top 3.5'

Sticking up and painted with alternate
6" Red and White bands.

Replaced with identical red & white
pipe. 18 Mar. 63
J. Oliver
M.D. Anderson



Tie check
July 23, 1965
M.D. Anderson
J. Dunlop
Tie Check
July 15, 1974
R. Farmer

Stone wall
NET 6-27-77
R. SANWEGUD

Tie Check
July 27, 1966
H. Larson
D. Potter
G. Reimer

TEMPERATURE I.P. Kenins
ANTICS & Trees ok
TAPES 1-31-78 H. Larson
B. Guetzk
S. Baettcher

ROLAND W. ANDERSON
COUNTY SURVEYOR
ANOKA COUNTY, MINNESOTA

NE Cor. Sec. 1, T31, R25

1 1/2" X 12' I.P. From Resurvey. Top 3.5'

Sticking up and painted with alternate
red and white bands.

Replaced Red & White pipe
with identical pipe. 18 Mar. 63
J. Oliver
M.D. Anderson
July 23, 1965
M.D. Anderson



ENTERED

TEMPERATURE I.P. AND
ANTICS & TREES
TAPES 1-31-78

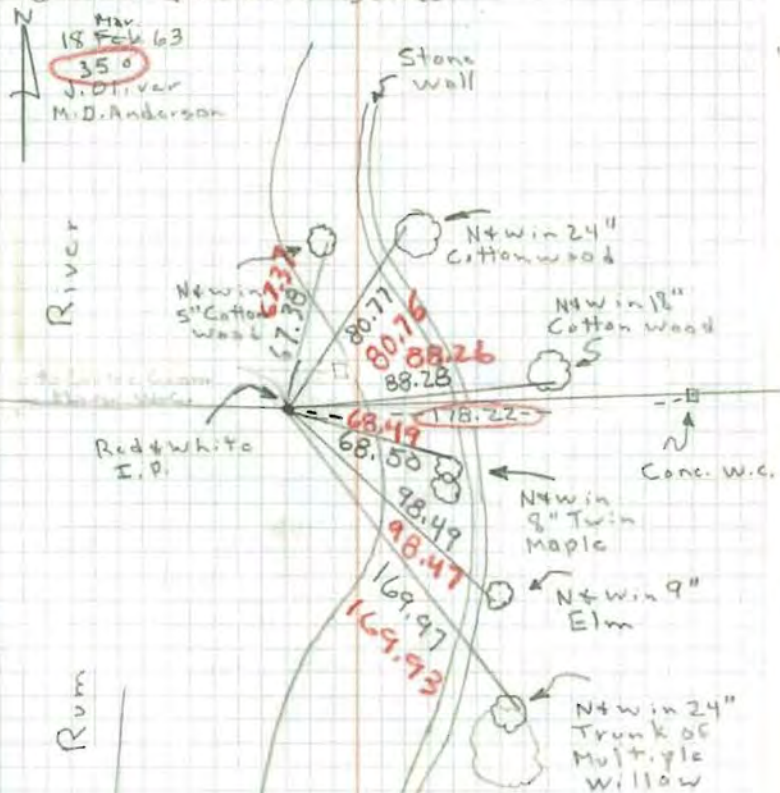
ROLAND W. ANDERSON
COUNTY SURVEYOR
ANOKA COUNTY, MINNESOTA

NE Cor. Sec. 1, T31, R25

Set 1 1/2" X 12' I.P. From Resurvey. Top 3.5'

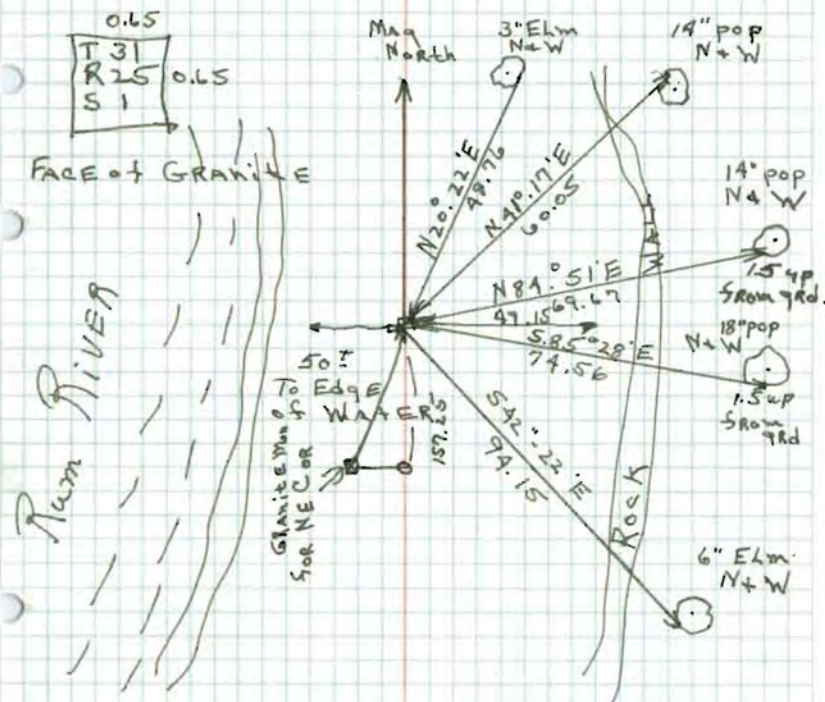
Sticking up and painted with alternate

6" Rod & White Bands.



Gran. is W.C. - Set actual Coy. From

NE Cor Sec 1-31-25 Resurvey.
 Found GRANITE Mon SEE Diagram of
 FACE SET 1/2" Cone Reinforcing Rod on N
 Edge up 1.5'



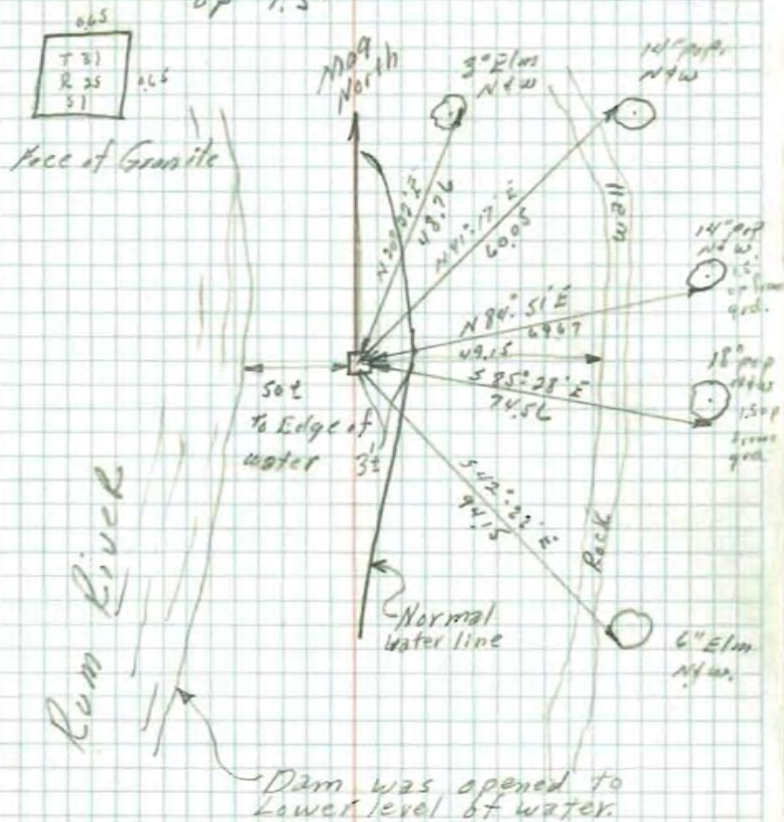
TEMPERATURE CORRECTED
 AND HORIZONTALLY
 TAPED MEASUREMENTS

4-10-61
 FREEMAN-ANDERSON
 Temp. Corr 755°

ROLAND W. ANDERSON
 COUNTY SURVEYOR
 ANOKA COUNTY, MINNESOTA

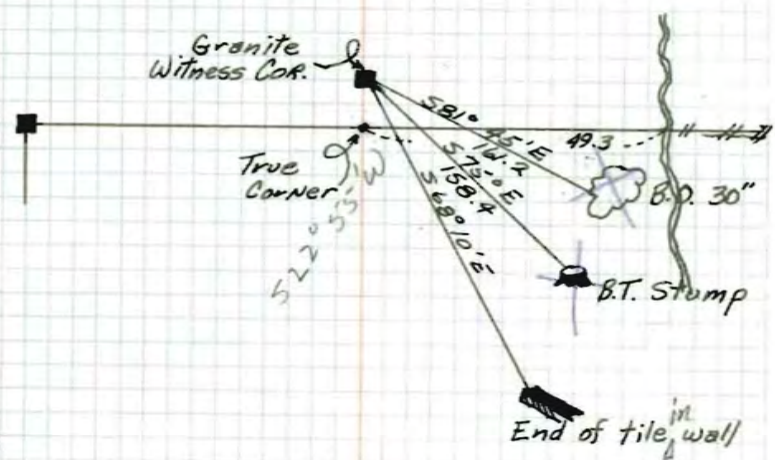
18 April 1961
 Freeman Anderson
 +55°

N.E. Cor. Sec 1-31-25
 Found Granite Mon Sec Diagram of Face
 Set $\frac{1}{2}$ " line Reinforcing Rod on N Edge
 up 1.5'



N.W. corner of sec 6,, T 31, R 24

Granite lying on side in river bed for witness monument



Nov 7, 1945
 H. Cartwright