

CERTIFICATE OF LOCATION OF GOVERNMENT CORNER

County of Anoka

State of Minnesota

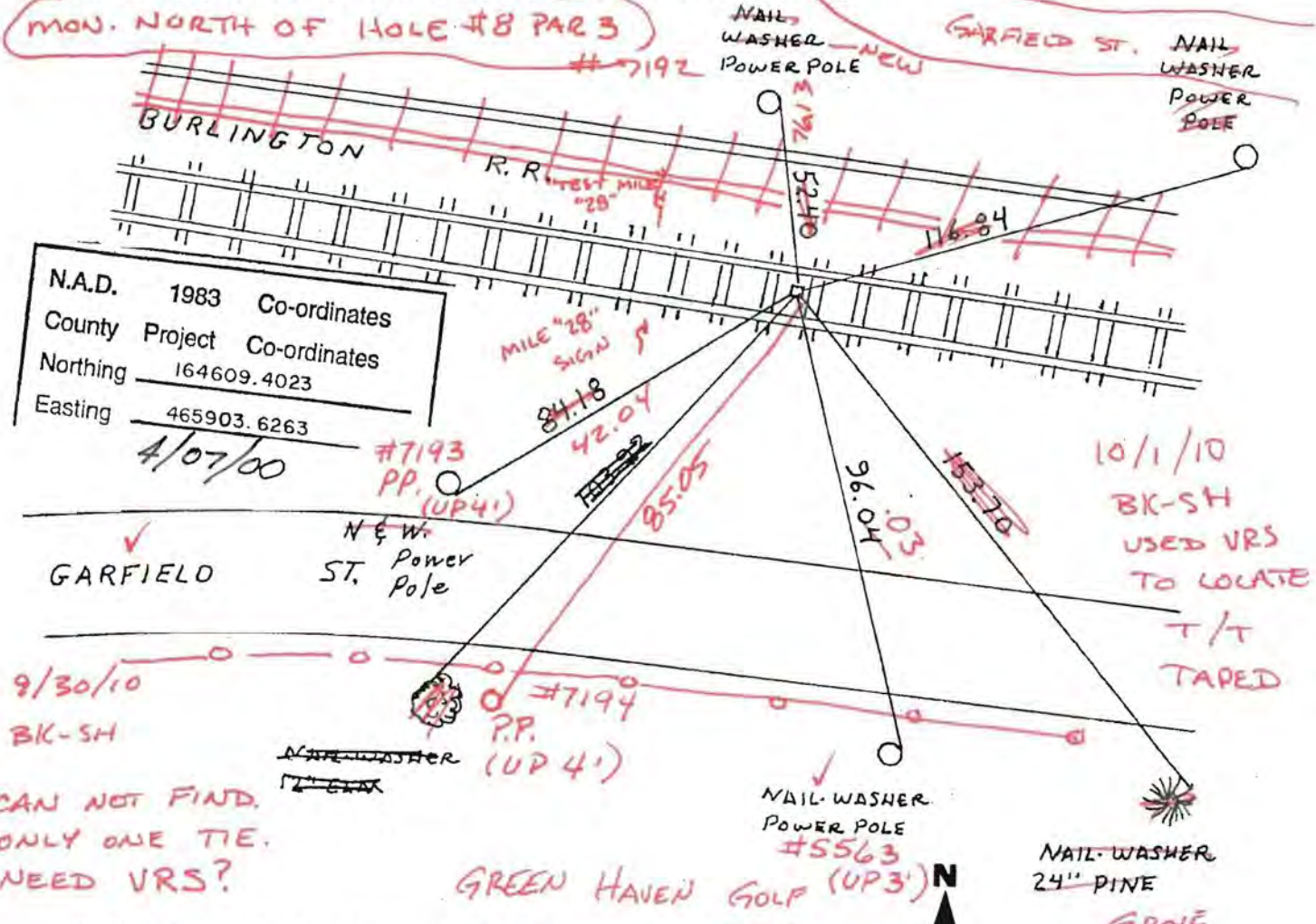
NORTH $\frac{1}{4}$ Corner of Sec. 1 Township 31 Range 25

I hereby certify that on the 7TH day of NOV., 1945, I found the described corner which was evidenced by CONCRETE SET BY HERRICK

and I further certify that to perpetuate the location of said corner, I did, at the exact location thereof, place a permanent marker consisting of CONCRETE MONUMENT DOWN 65'± 2.0'

30'± EAST OF MILE MARKER SIGNS UNDER 4" PVC PIPE.

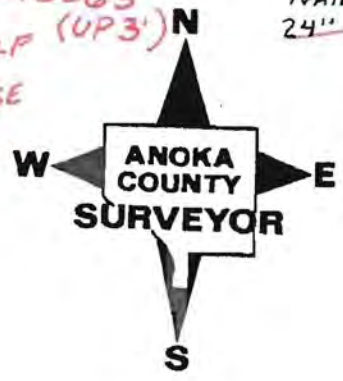
which reference or witness monuments are located in the manner following:



N.A.D.	1983	Co-ordinates
County	Project	Co-ordinates
Northing	164609.4023	
Easting	465903.6263	
4/07/00		

CAN NOT FIND.
ONLY ONE TIE.
NEED VRS?

Revised date	Revised date	Revised date
6-10-86		
8-9-90		
4-5-95 HL		
4-7-00		



CERTIFICATE OF LOCATION OF GOVERNMENT CORNER

County of Anoka

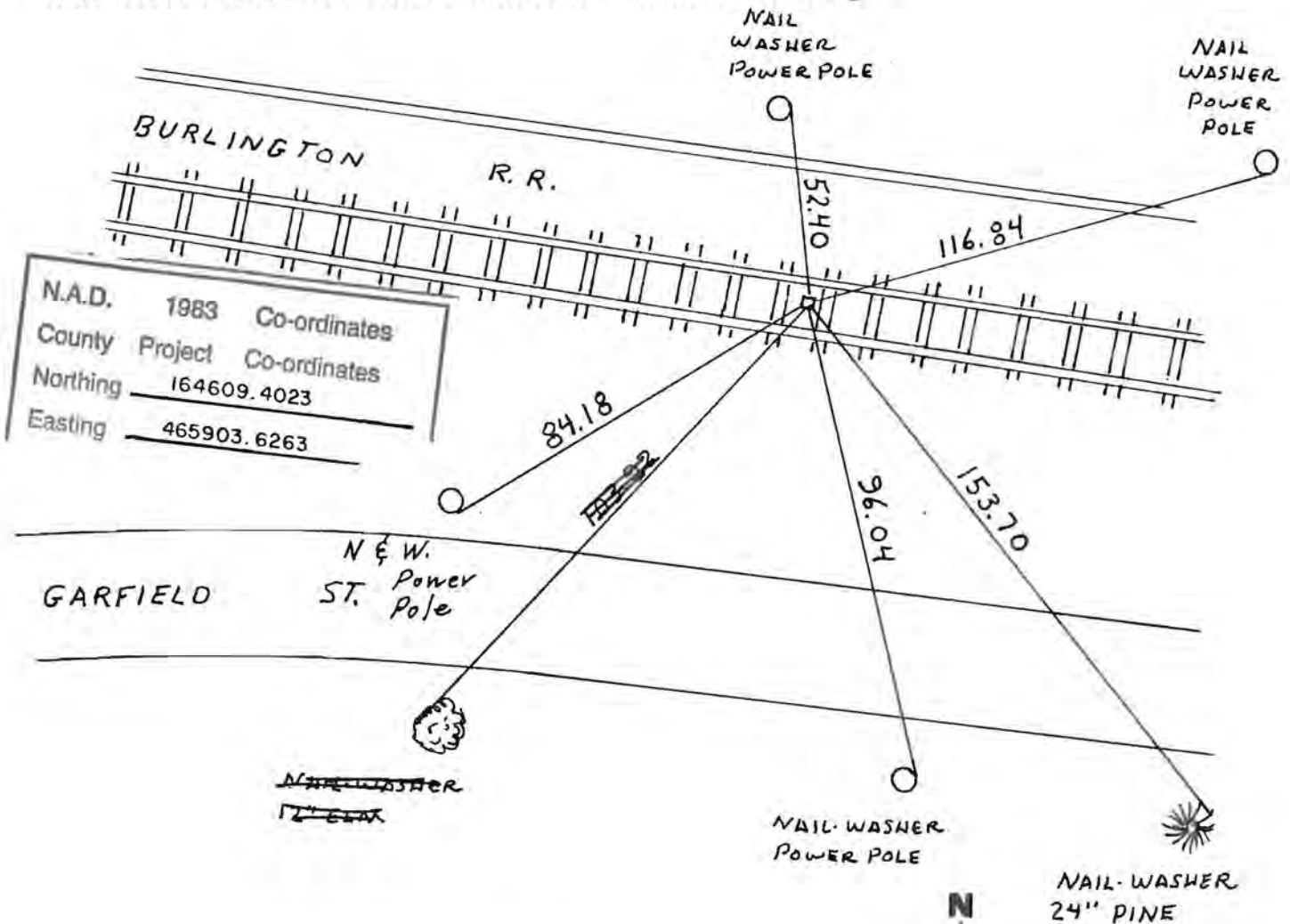
State of Minnesota

NORTH 1/4 Corner of Sec. 1 Township 31 Range 25

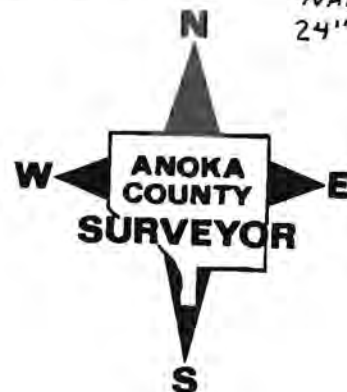
I hereby certify that on the 7TH day of NOV., 1945, I found the described corner which was evidenced by CONCRETE SET BY HERRICK

and I further certify that to perpetuate the location of said corner, I did, at the exact location thereof, place a permanent marker consisting of CONCRETE MONUMENT DOWN 1.5'±

which reference or witness monuments are located in the manner following:



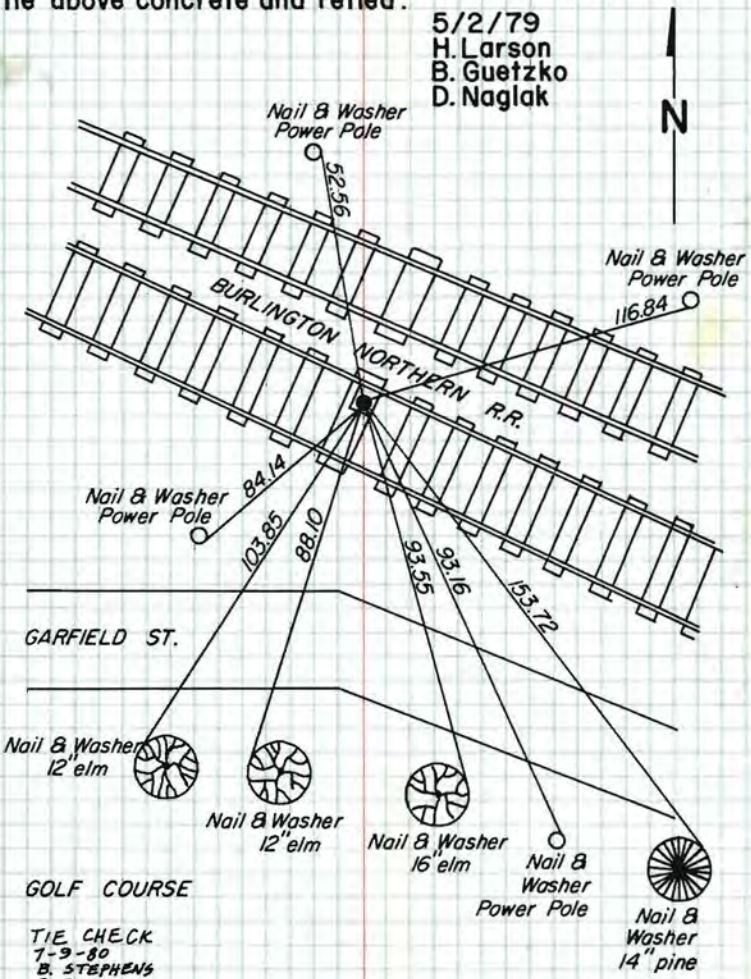
Revised date	Revised date	Revised date
6-10-86		
8-9-90		
4-5-95 HL		
4-7-00		



N 1/4 Corner Section 1 - T31 - R25

Found concrete monument under railroad tie between south tracks. Concrete down 1.5' ±. Placed P.K. in tie above concrete and retied.

5/2/79
H. Larson
B. Guetzko
D. Naglak



TIE CHECK
7-9-80
B. STEPHENS
P. ROSS
P. HORNBY

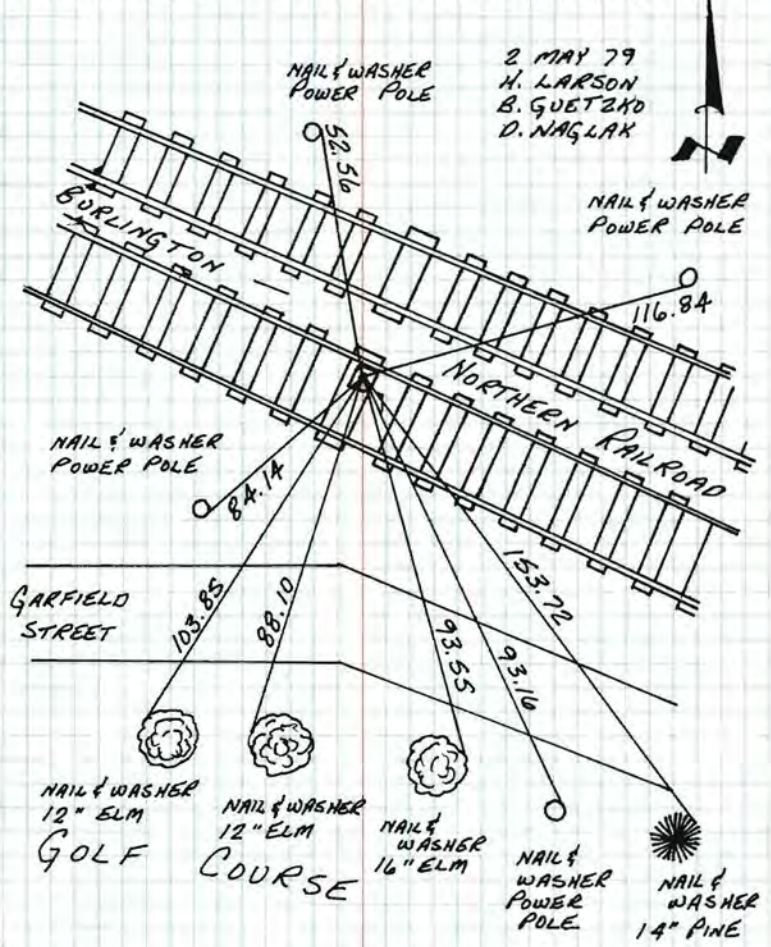
TEMPERATURE CORRECTED
AND HORIZONTALLY
TAPED MEASUREMENTS

ROLAND W. ANDERSON
COUNTY SURVEYOR
ANOKA COUNTY, MINNESOTA

N 1/4 CORNER SECTION 1 - T31 - R25

FOUND CONCRETE MONUMENT UNDER RAILROAD TIE BETWEEN SOUTH TRACKS. CONCRETE DOWN 1.5' ±. PLACED P.K. IN TIE ABOVE CONCRETE AND RETIED.

2 MAY 79
H. LARSON
B. GUETZKO
D. NAGLAK

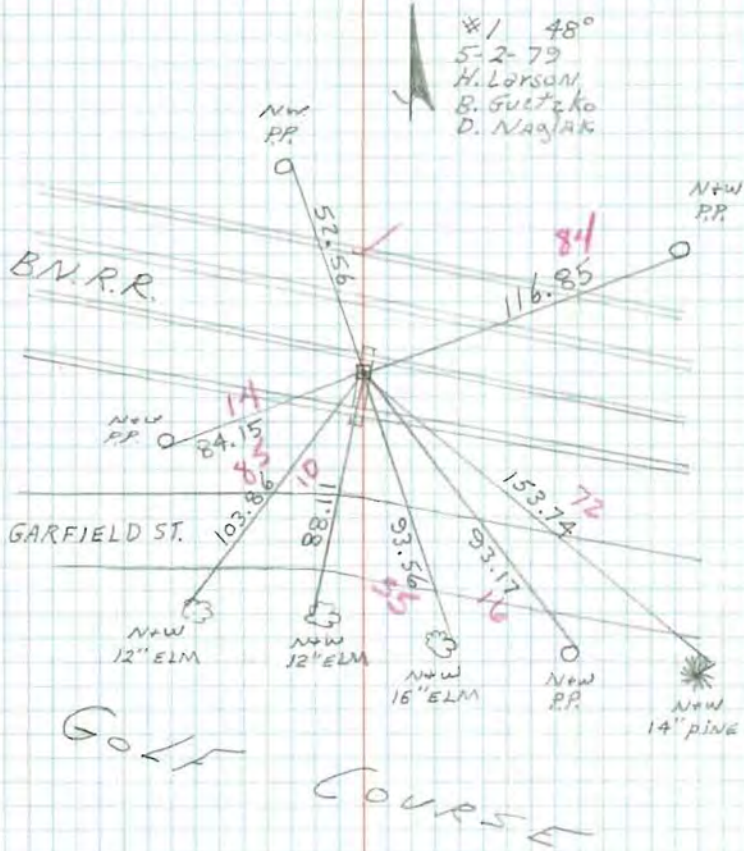


TEMPERATURE CORRECTED
AND HORIZONTALLY
TAPED MEASUREMENTS

ROLAND W. ANDERSON
COUNTY SURVEYOR
ANOKA COUNTY, MINNESOTA

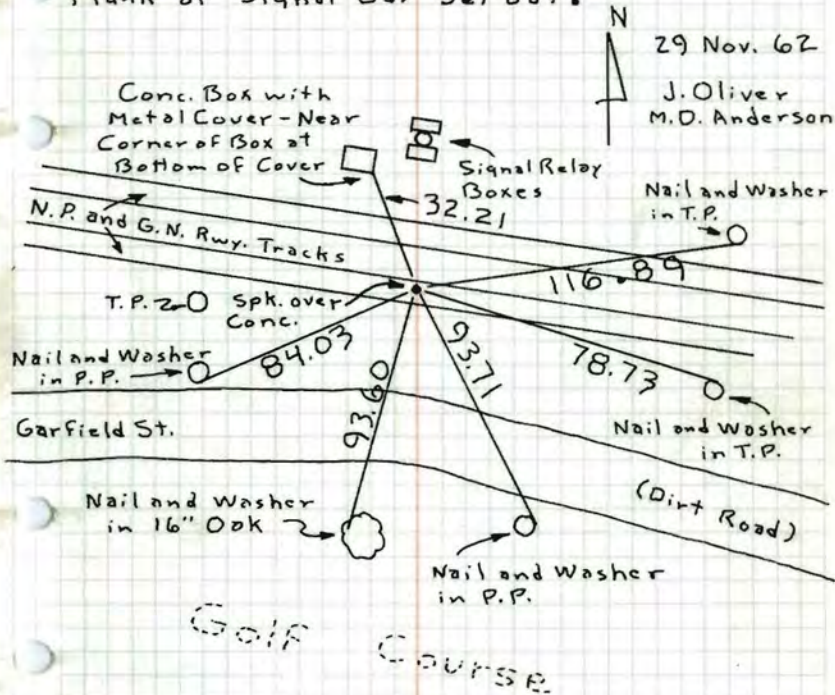
NORTH 1/4 CORNER SECTION 1 T31R25

FOUND CONCRETE MONUMENT UNDER
R.R. TIE BETWEEN SOUTH TRACKS
CONC. DOWN 1.5', PLACED P.K. IN
TIE ABOVE CONC. AND RETIRED



No. 1/4 Cor. Sec. 1, T31, R25

Found 4" Sq. Concrete Monument below Tie.
Mon. is 0.8' below base of rail and 1.0'
So. of inside edge of Base of North rail.
Set Bridge Spike above Conc. Mon. in
Plank of Signal Car Set out.



ROLAND W. ANDERSON
COUNTY SURVEYOR
ANOKA COUNTY, MINNESOTA

Tie Check
July 15, 1974
R. Farmer

COULD NOT FIND
JUNE 27, 1977
R. SANNERUD

Tie Check
July 28, 1966
H. Larson
D. Potter
G. Reimer

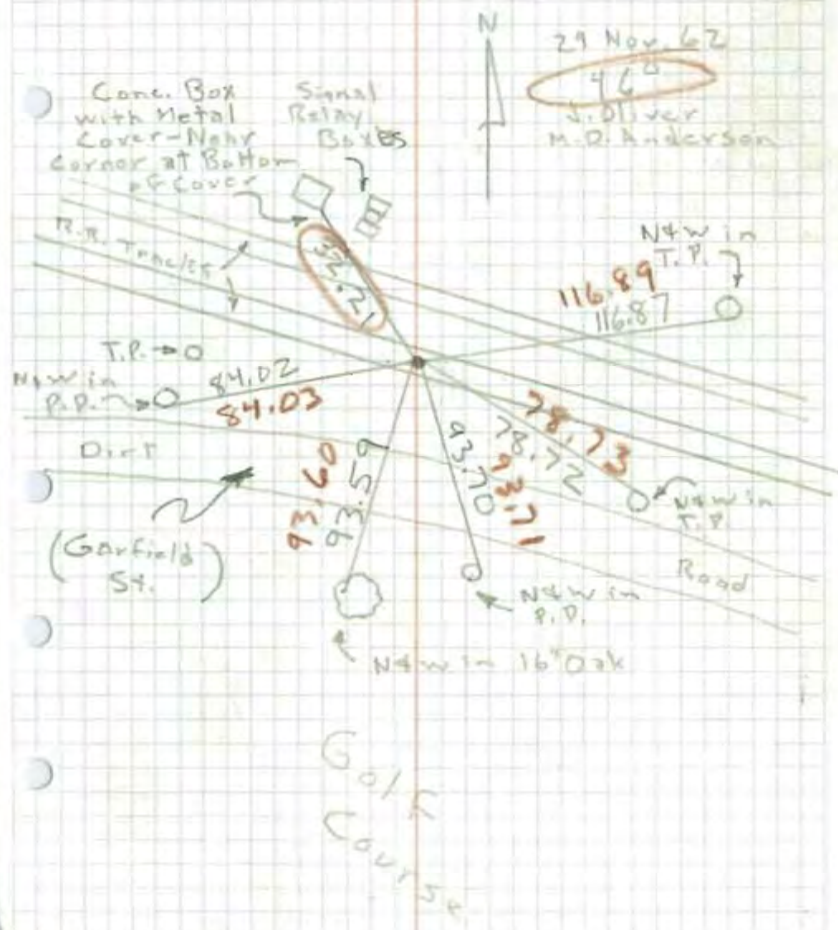
TEMPERATURE CORRECTED
AND HORIZONTALLY
TAPED MEASUREMENTS

N. 1/4 Cor. Sec. 1, T31, R25

Found 4" Sq. Conc. Mon. below Tie.

0.8' below base of rail and 1.0' from
Inside Edge of Base of N. rail.

Set Bridge Spk. above Conc. Mon. in
Plank of Signal Car Set Out.



N. 1/4 Sec. 1, T31

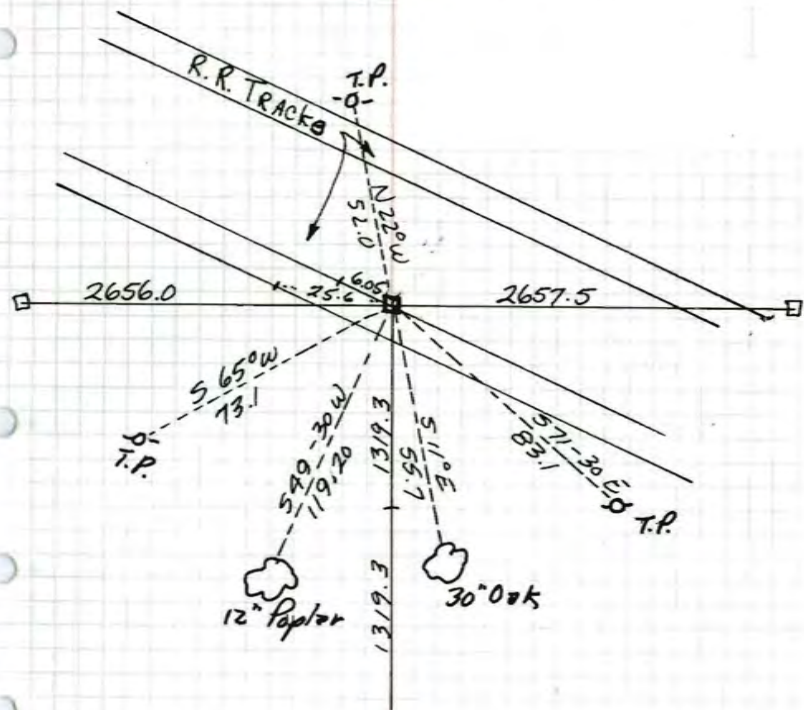
~~Sec. 1, T31, R25~~, R25

Conc. Mon.

11/7/45

Herrick

0.8' Below Base of Rail
1.0' from Inside Edge of
Base of N. Rail

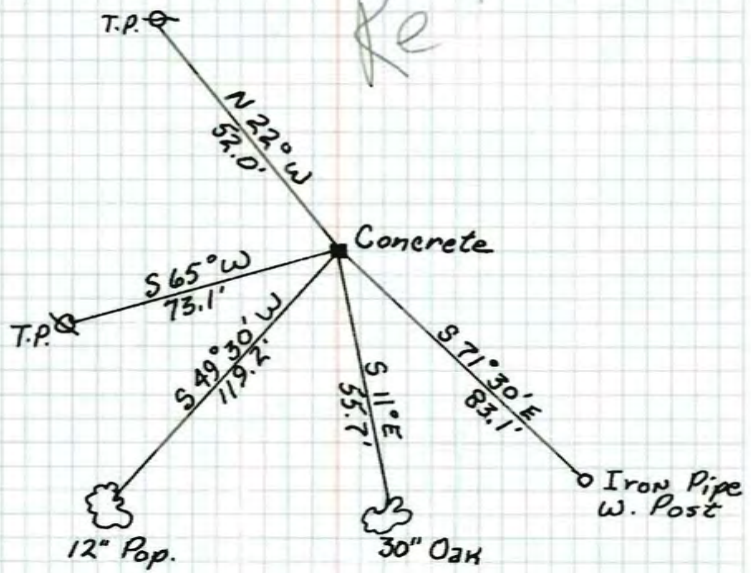


1959
Holom

N¹/₄ CORNER of sec. 1, T 31, R 25
 Concrete mon 0.8 down

✓
 ✓

Retie

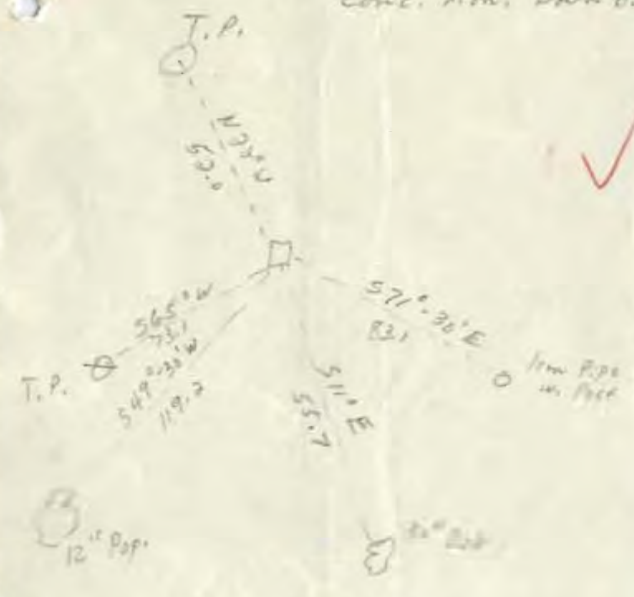


Nov. 7, 1945
 CARTWRIGHT

N¹/₄ Sec. 1, T 31, R 25

Nov. 7, 1945

Conc. Mon. Down 0.8'



✓