

# CERTIFICATE OF LOCATION OF GOVERNMENT CORNER

County of Anoka

State of Minnesota

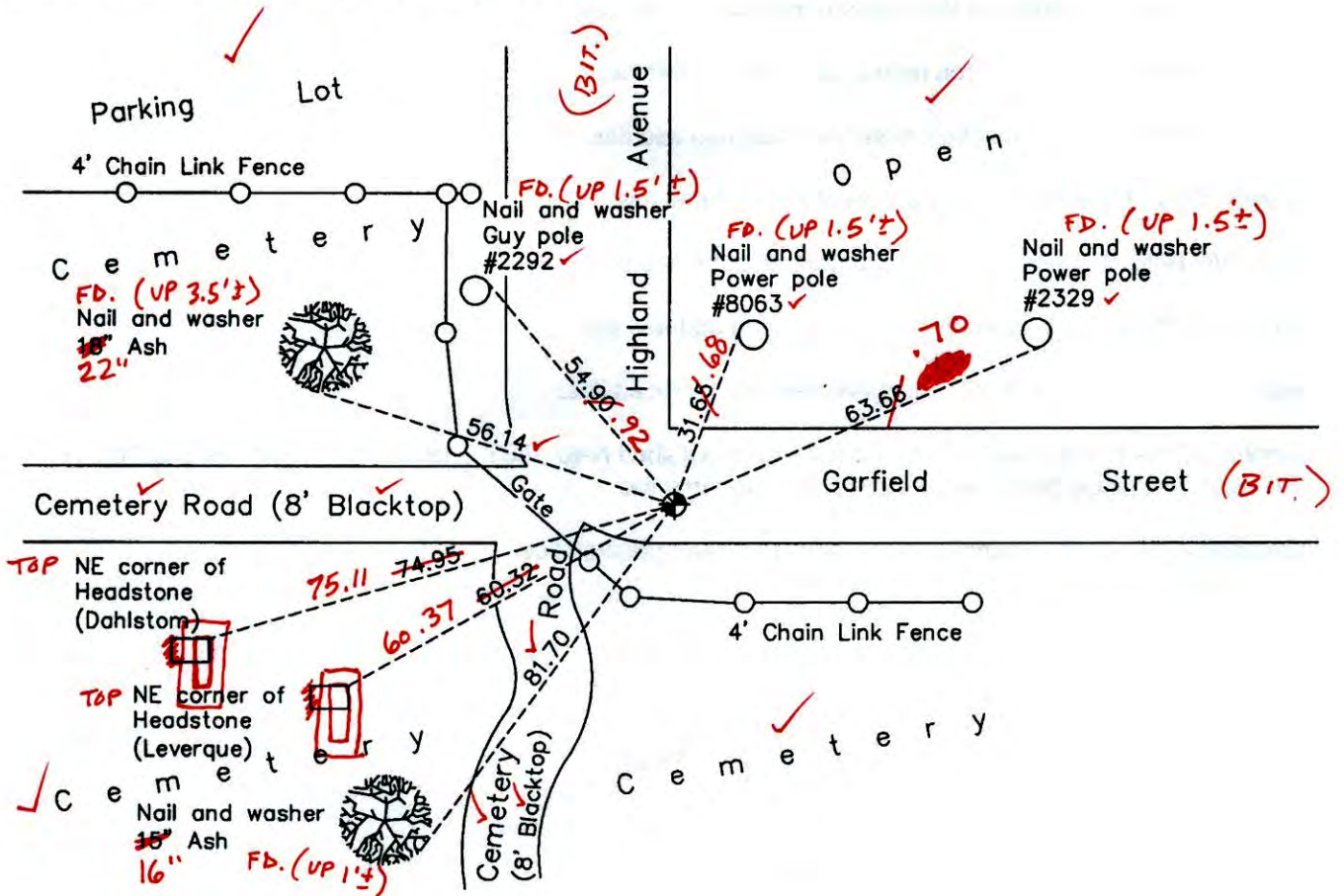
## Northwest Corner of Sec. 1 Township 31 Range 25

On the 11th day of August, 1966, the described corner was evidenced by a broken concrete monument

and to perpetuate the location of said corner, at the exact location thereof, a permanent marker was placed consisting of a cast iron monument (DOWN 0.2'±) 2.5'± S. OF E

AND on the 30th day of September, 2010, said permanent marker was found and the ties were updated

Updated reference ties are as shown below.



N

S

ANOKA COUNTY SURVEYOR

Revision Date

12/20/10

3-16-15  
 BK-55-SH N.A.D. 1983 Coordinates  
 TOTAL STA. (1996 Adjustment)  
 URS

County Project Coordinates	
Northing	164617.7635
Easting	463246.9249
Date	4/07/00

I hereby certify that this United States public land survey monument record is correct and complete to the best of my knowledge and belief.

Date 12/20/10

Larry D. Hoium, Anoka County Surveyor  
 Minnesota License Number 18165

3DQ = 0.05    N = 164617.7066    E = 463246.9120

# CERTIFICATE OF LOCATION OF GOVERNMENT CORNER

County of Anoka

State of Minnesota

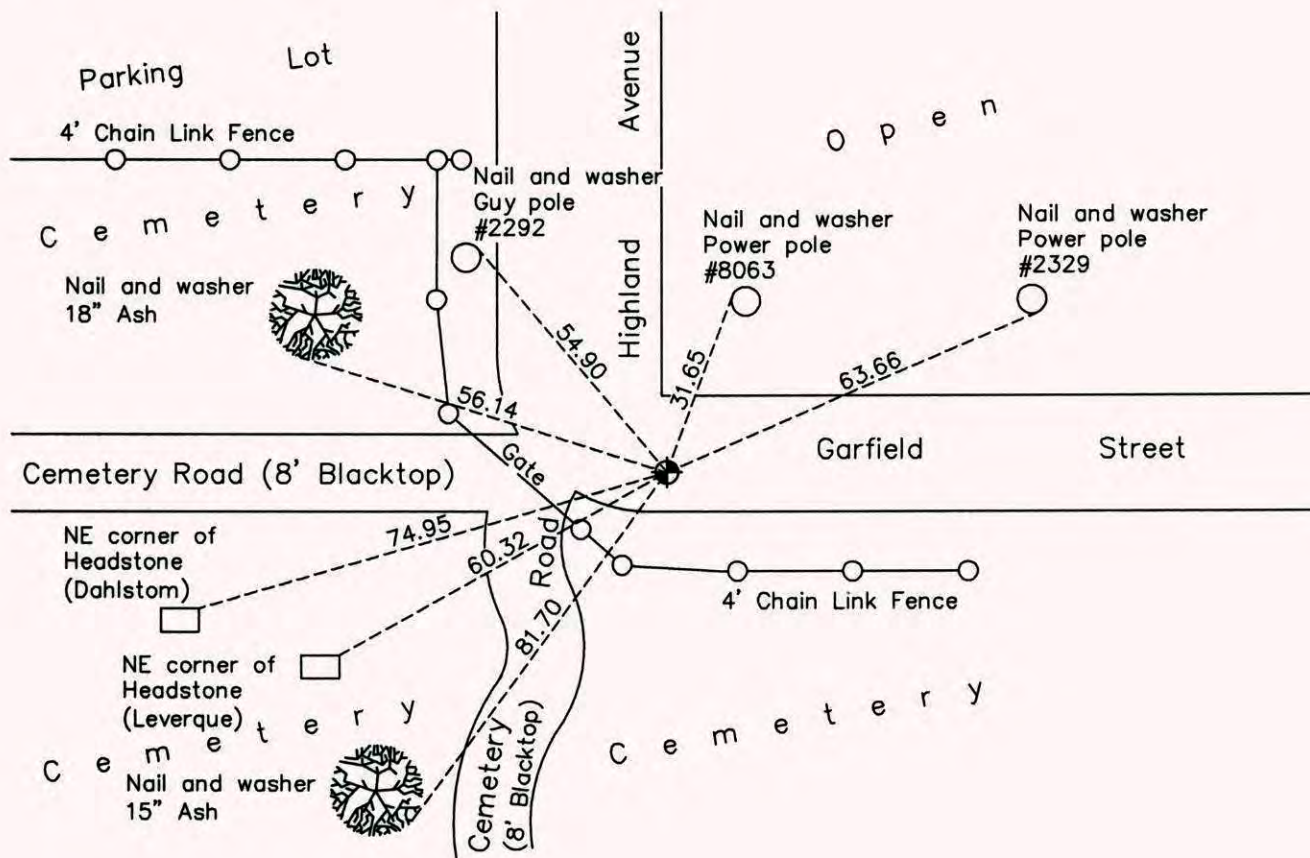
## Northwest Corner of Sec. 1 Township 31 Range 25

On the 11th day of August, 1966, the described corner was evidenced by a broken  
concrete monument

and to perpetuate the location of said corner, at the exact location thereof, a permanent marker was placed consisting of a cast iron monument

AND on the 30th day of September, 2010, said permanent marker was found and the ties were updated

Updated reference ties are as shown below.



N

W ANOKA COUNTY SURVEYOR E

S

Revision Date

12/20/10

N.A.D. 1983 Coordinates  
(1996 Adjustment)

County Project Coordinates	
Northing	164617.7635
Easting	463246.9249
Date	4/07/00

I hereby certify that this United States public land survey monument record is correct and complete to the best of my knowledge and belief.

*Larry D. Hoium* Date 12/20/10

Larry D. Hoium, Anoka County Surveyor

Minnesota License Number 18165

# HISTORY OF GOVERNMENT CORNER

County of Anoka

State of Minnesota

Northwest Corner of Sec. 1 Township 31 Range 25

**CORNER HISTORY:**

July 13, 1943 - H.A. Cartwright found concrete monument flush with the surface. Established ties to monument.

March 29, 1963 - Found concrete monument flush with the surface and updated ties.

March 18, 1966 - Found concrete monument missing. Set P.K. nail in corner position using remaining ties and set P.K. nails 2.00' North and East. Updated ties.

August 11, 1966 - Found concrete monument broken off and down 1.2'. Monument was 0.06' south and 0.01' east of P.K. nails set on March 18, 1966. Set cast iron monument over concrete monument flush with the surface and updated ties. Set P.K. nails 2.00' North and East.

August 7, 1970 - Found cast iron monument and updated ties.

July 15, 1974 - Found cast iron monument and updated ties.

June 27, 1977 - Found cast iron monument and updated ties.

July 9, 1980 - Found cast iron monument and updated ties.

June 16, 1986 - Found cast iron monument and updated ties.

August 9, 1990 - Found cast iron monument and updated ties.

August 19, 1994 - Found cast iron monument and updated ties.

April 7, 2000 - Found cast iron monument and established NAD 1983 (1996 Adjustment) Anoka County Project Coordinates by Static GPS methods. Updated ties.

September 30, 2010 - Found cast iron monument and updated ties.

# CERTIFICATE OF LOCATION OF GOVERNMENT CORNER

County of Anoka

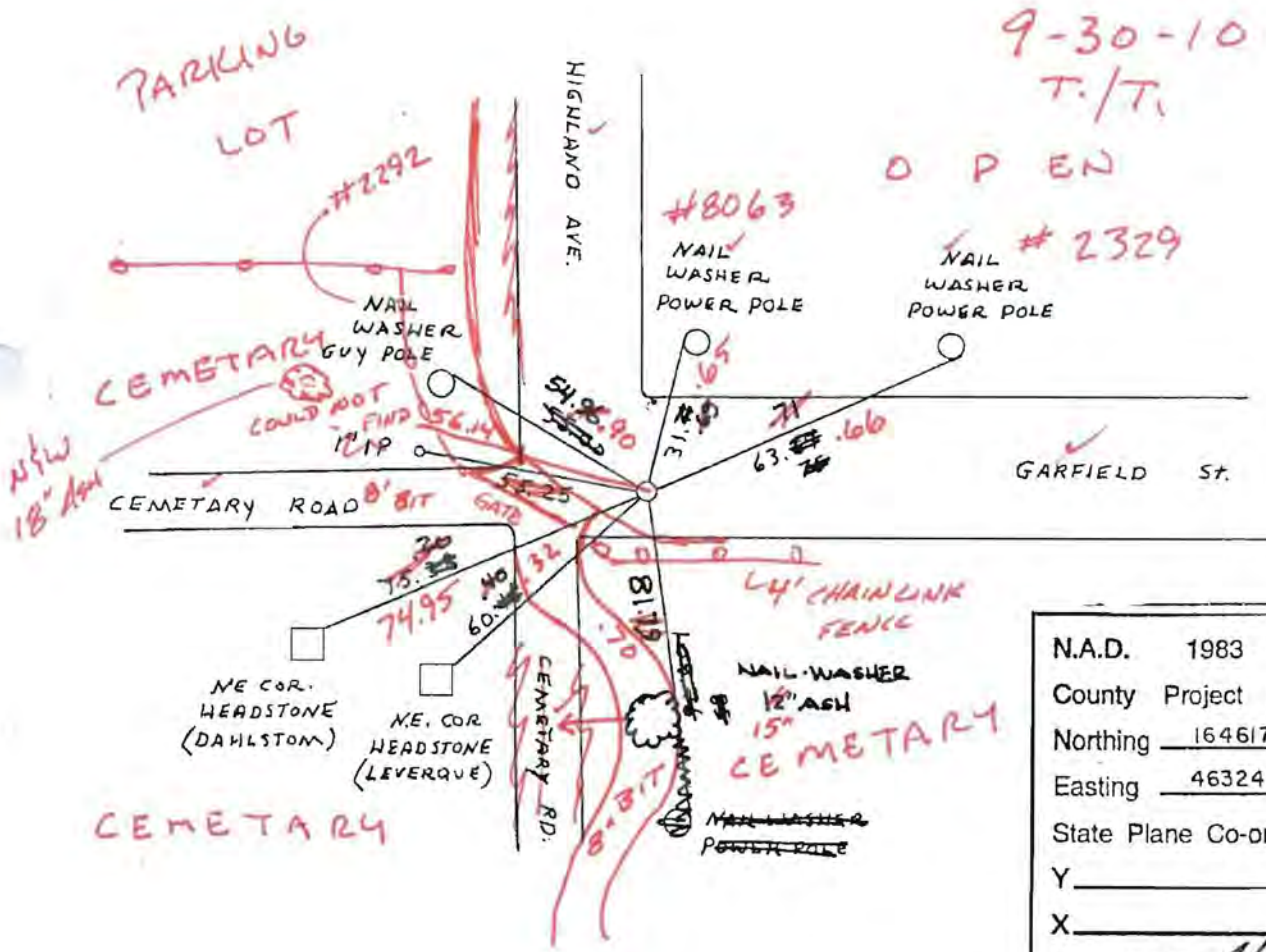
State of Minnesota

NORTHWEST Corner of Sec. 1 Township 31 Range 25

I hereby certify that on the 11 day of AUGUST, 1966, I found the described corner which was evidenced by BROKEN CONCRETE MONUMENT

and I further certify that to perpetuate the location of said corner, I did, at the exact location thereof, place a permanent marker consisting of CAST IRON MONUMENT

which reference or witness monuments are located in the manner following:



N.A.D.	1983	Co-ordinates
County	Project	Co-ordinates
Northing	<u>164617.7635</u>	
Easting	<u>463246.9249</u>	
State Plane Co-ordinates	Y _____	
	X _____	
Date	<u>4/07/00</u>	

Revised date	By
<u>6-18-86</u>	<u>D. ROSS</u>
<u>REDRAWN</u>	
<u>1-26-88</u>	<u>H. LARSON</u>
<u>8-9-90</u>	<u>M. Zimmerman</u>
<u>8-19-94</u>	
<u>4-7-00</u>	

Minnesota State Plane Coordinates  
 South Zone  
 Y \_\_\_\_\_ X \_\_\_\_\_  
 \_\_\_\_\_  
 County Surveyor \_\_\_\_\_ Date \_\_\_\_\_  
 Registered Land Surveyor No. \_\_\_\_\_

# CERTIFICATE OF LOCATION OF GOVERNMENT CORNER

County of Anoka

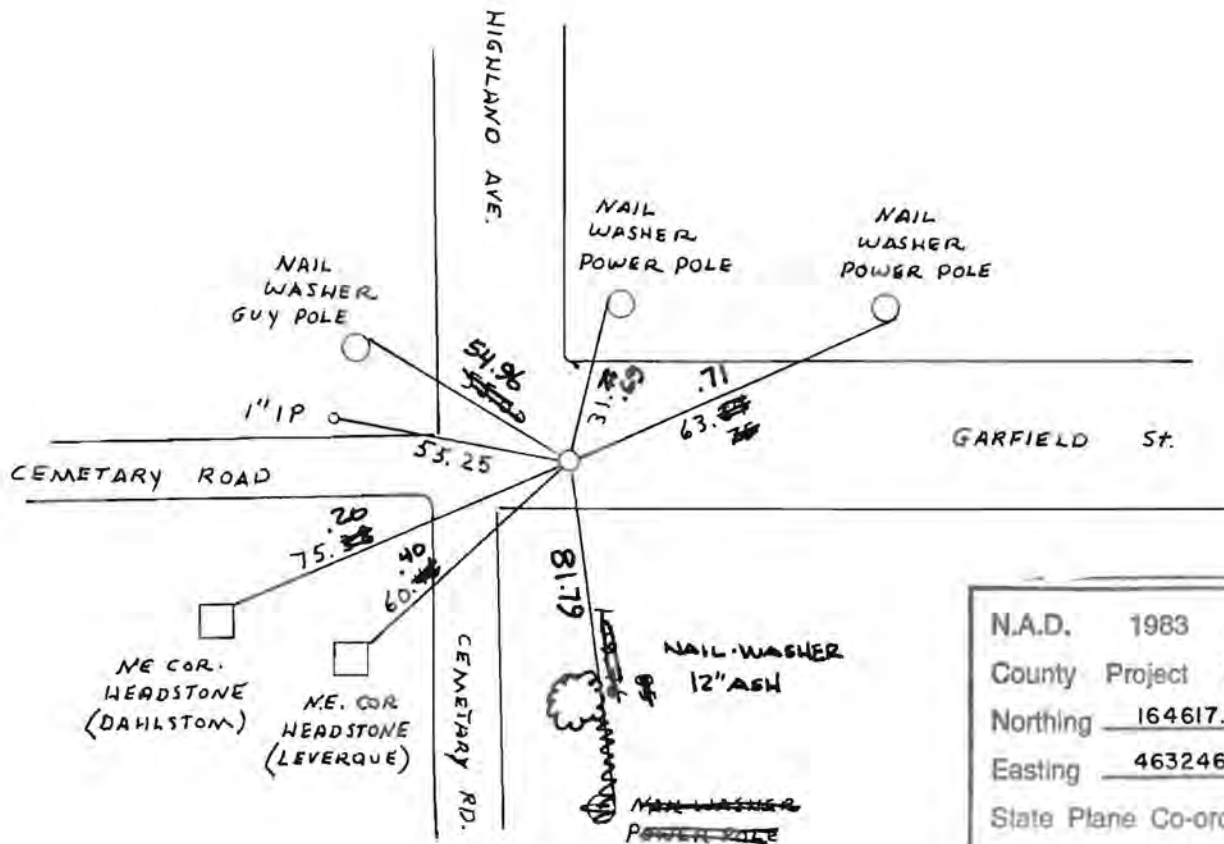
State of Minnesota

NORTHWEST Corner of Sec. 1 Township 31 Range 25

I hereby certify that on the 11 day of AUGUST, 1966, I found the described corner which was evidenced by BROKEN CONCRETE MONUMENT

and I further certify that to perpetuate the location of said corner, I did, at the exact location thereof, place a permanent marker consisting of CAST IRON MONUMENT

which reference or witness monuments are located in the manner following:



N.A.D.	1983	Co-ordinates
County	Project	Co-ordinates
Northing	<u>164617.7635</u>	
Easting	<u>463246.9249</u>	
State Plane Co-ordinates		
Y	_____	
X	_____	
Date _____		

Revised date	By
6-16-86	D. ROSS
REDRAWN 1-26-88	H. LARSON
8-9-90	M. Zimmerman
8-19-94	
4-7-00	

**Minnesota State Plane Coordinates**  
**South Zone**

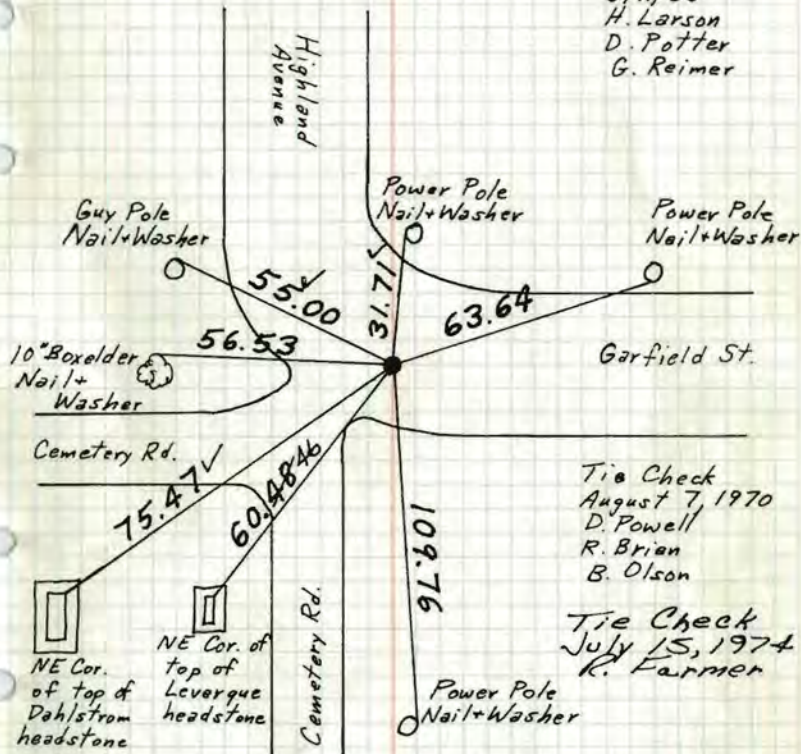
Y \_\_\_\_\_ X \_\_\_\_\_

\_\_\_\_\_, \_\_\_\_\_  
County Surveyor Date

Registered Land Surveyor No. \_\_\_\_\_

# NW Cor. Sec. 1 - T31 - R25

Found Concrete Monument broken off and down 1.2'.  
 Monument is 0.06' South and 0.01' East of PK Nail  
 Set by Oliver, Anderson, & Larson. Set Cast Iron  
 Monument flush over concrete. PK's 2.00' North & East.  
 8/11/66  
 H. Larson  
 D. Potter  
 G. Reimer



TIE CHECK  
 JUNE 27, 1977  
 R. SANNERUD  
 S. BRIEN  
 J. STEPHENS

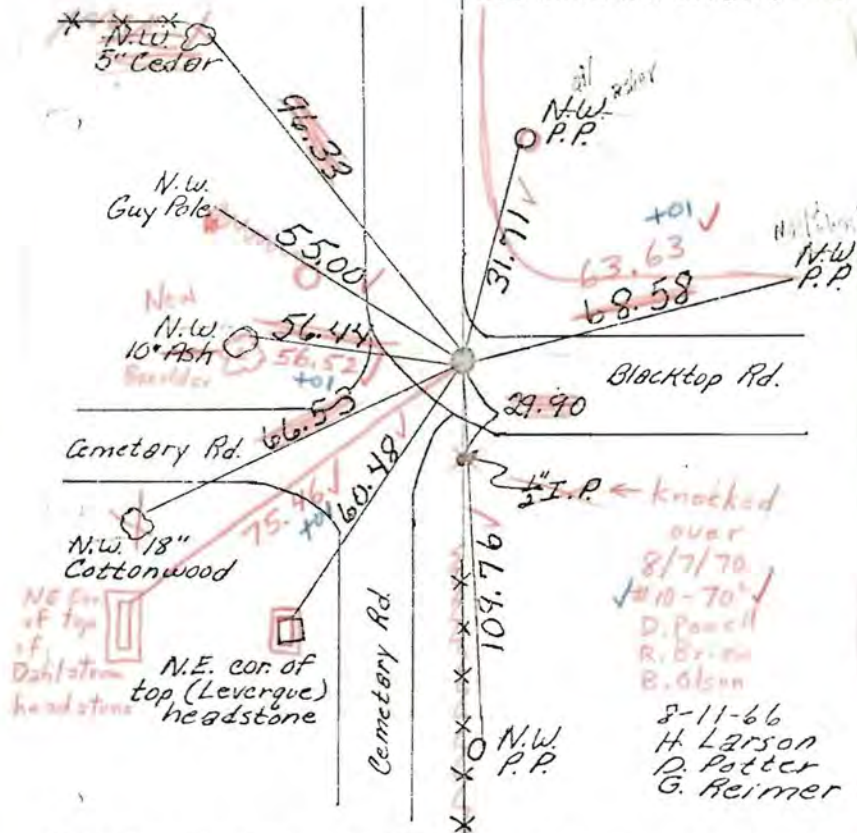
TIE CHECK  
 7-9-80  
 B. STEPHENS  
 P. ROSS  
 P. HORNBY

TEMPERATURE CORRECTED  
 AND HORIZONTALLY  
 TAPED MEASUREMENTS

ROLAND W. ANDERSON  
 COUNTY SURVEYOR  
 ANOKA COUNTY, MINNESOTA

# NW Corner Section 1, T31 R25

Found concrete mon. broken off and  
 down 1.20', mon. is .06 south and .01  
 east of P.K. set by Oliver, Anderson, & Larson  
 Set cast iron mon over concrete & flush  
 PK's 2.00 North and East

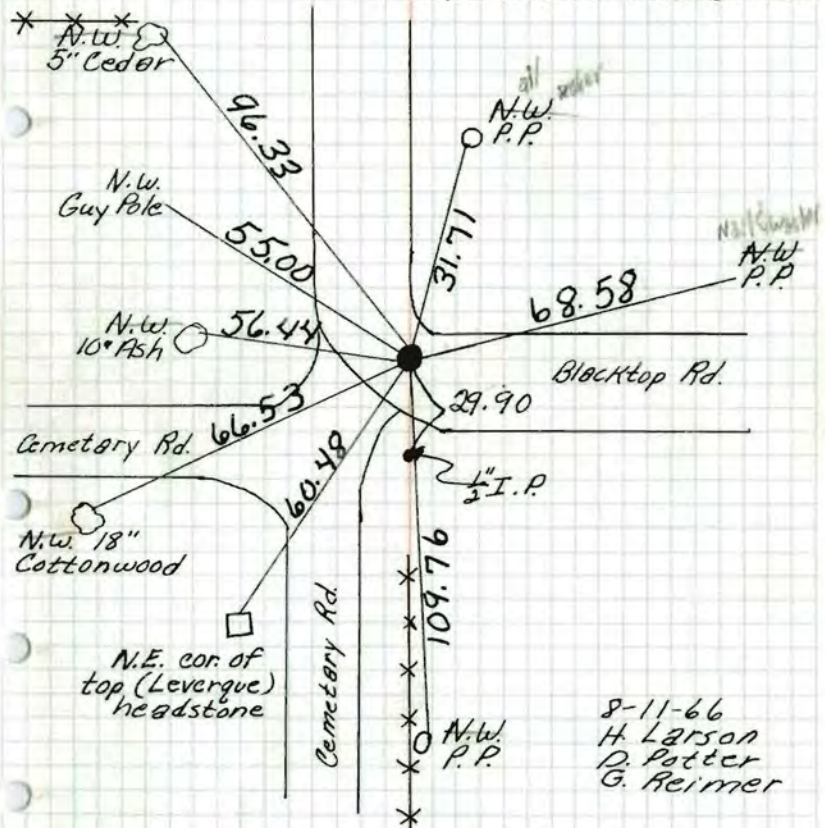


TEMPERATURE CORRECTED  
 AND HORIZONTALLY  
 TAPED MEASUREMENTS

ROLAND W. ANDERSON  
 COUNTY SURVEYOR  
 ANOKA COUNTY, MINNESOTA

# NW Corner Section 1, T31 R25

Found concrete mon. broken off and down 1.20', mon. is .06 south and .01 east of P.K. set by Oliver, Anderson, & Larson  
 Set cast iron mon over concrete & flush P.K.'s 2.00 North and East

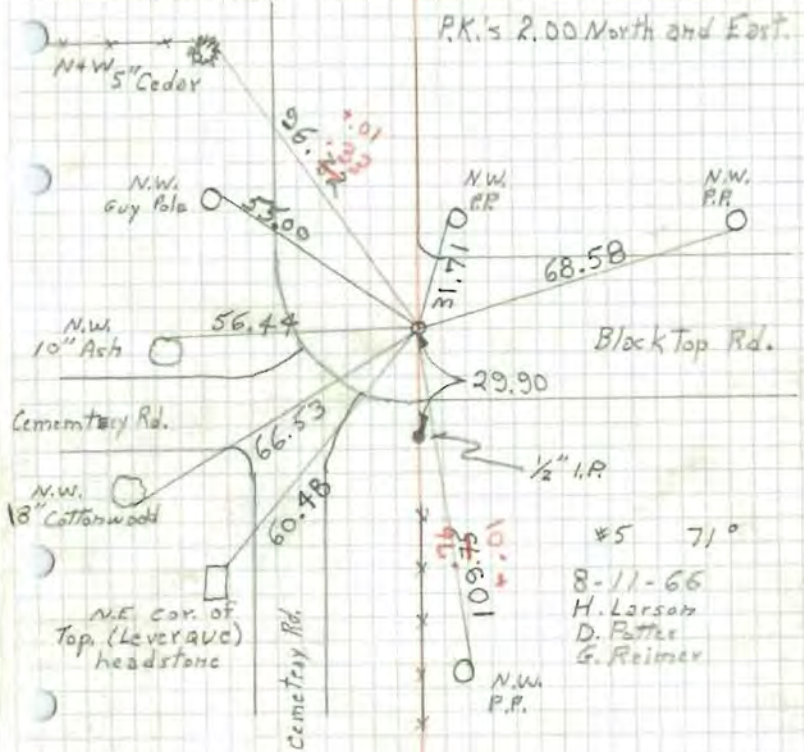


TEMPERATURE CORRECTED  
 AND HORIZONTALLY  
 TAPED MEASUREMENTS

ROLAND W. ANDERSON  
 COUNTY SURVEYOR  
 ANOKA COUNTY, MINNESOTA

# NW Cor. Sec. 1 T31 R25

Found concrete mon. broken off and down 1.20' mon. is .06 south and .01 east of P.K. set by Oliver, Anderson & Larson.  
 Set cast Iron mon. over concrete & flush P.K.'s 2.00 North and East.

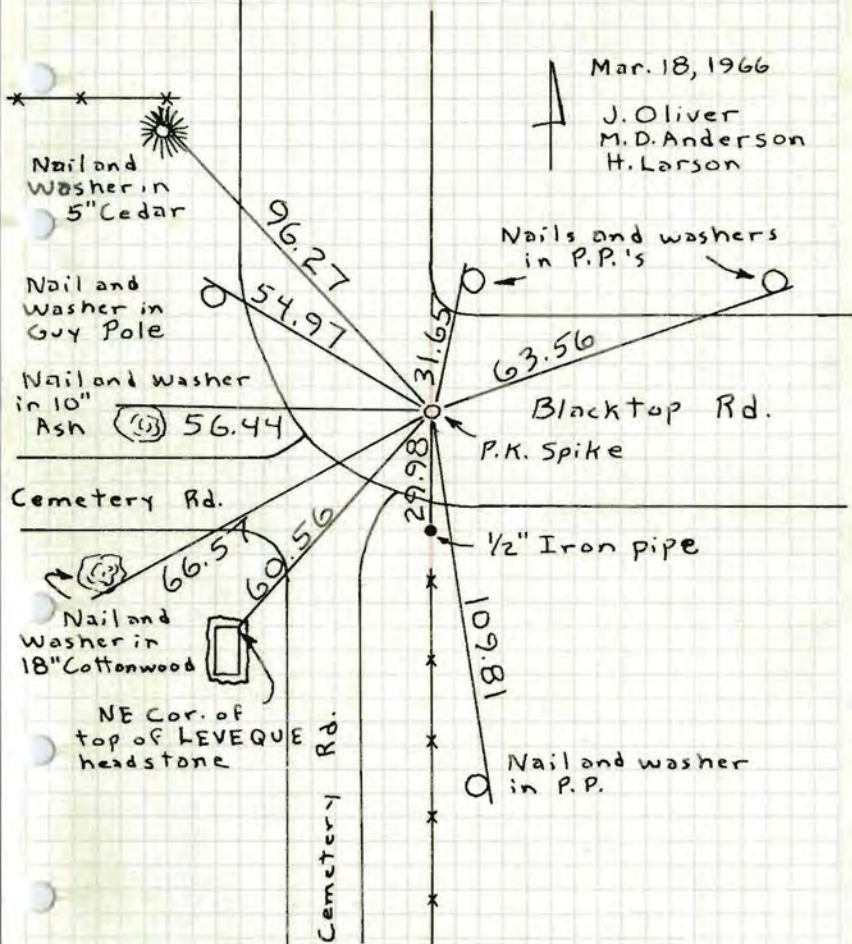


8-11-66  
 H. Larson  
 D. Potter  
 G. Reimer

# NW Cor Sec 1 T31 R25

Set PK spk. from remaining Ties of 1963.

set PK spks. 2' North and East.



TEMPERATURE CORRECTED AND HORIZONTALLY TAPED MEASUREMENTS

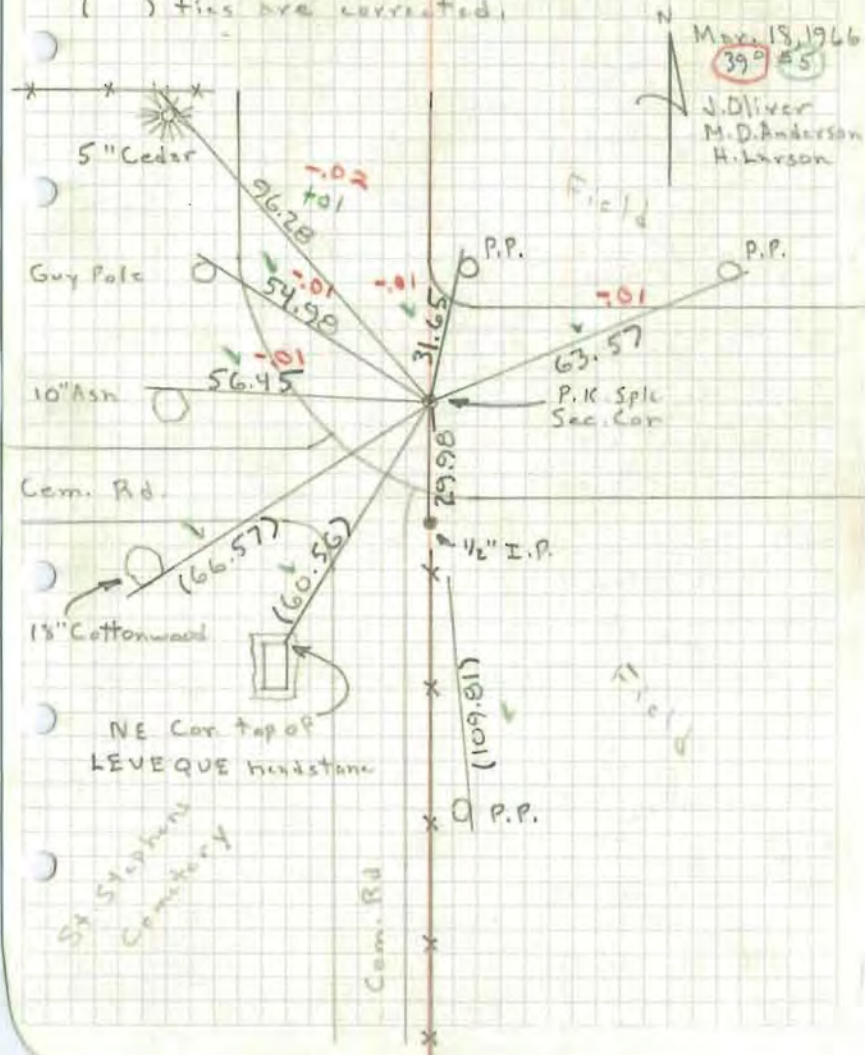
ROLAND W. ANDERSON  
COUNTY SURVEYOR  
ANOKA COUNTY, MINNESOTA

# NW Cor. Sec. 1, T31, R25

Set PK Spk. from Remaining ties of 1963.

Also set PK's 2.00' North and East. Nails and washers in all tie trees and poles.

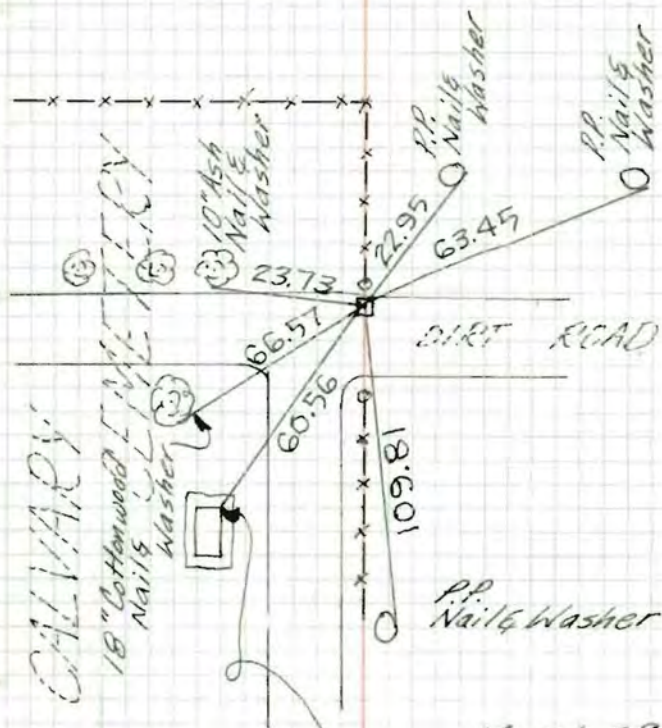
( ) ties are corrected.





N.W. Cor. Sec. 1-31-25

Concrete Monument flush



N.E. Cor. top of LEVEQUE headstone

March 29, 1963

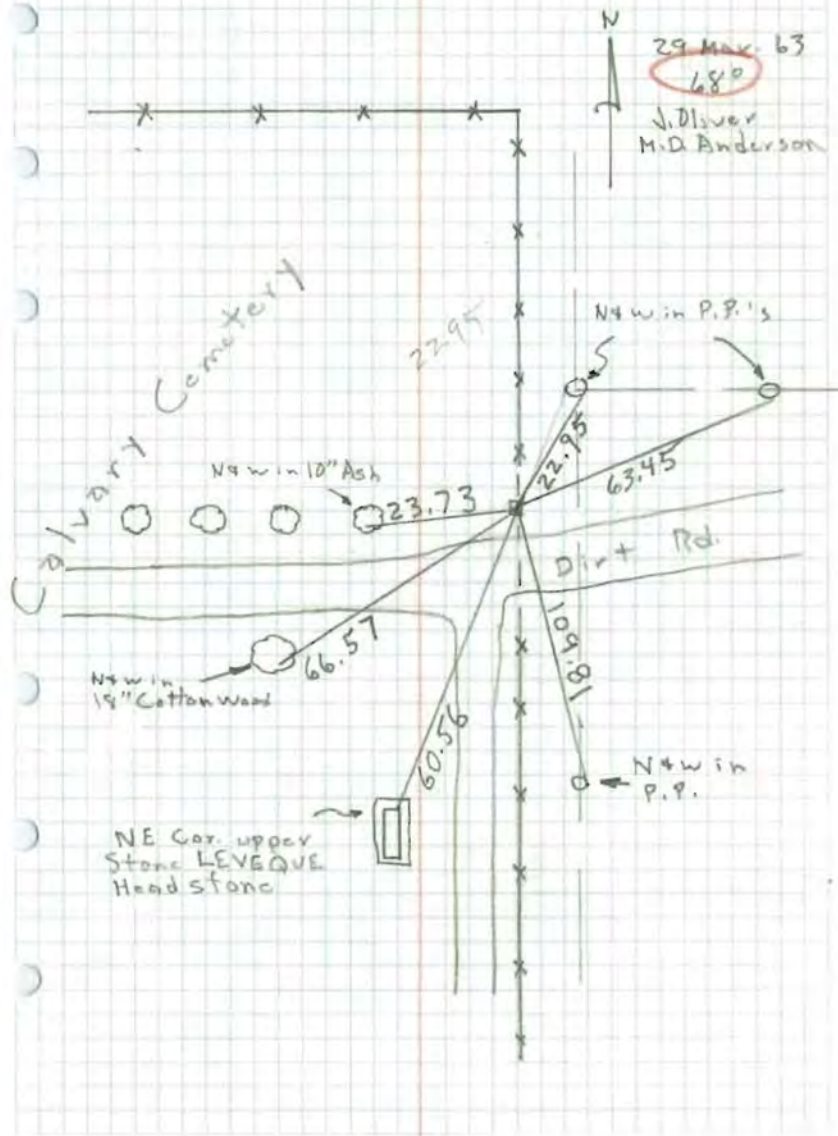
J. Oliver  
M.D. Anderson

ROLAND W. ANDERSON  
COUNTY SURVEYOR  
ANOKA COUNTY, MINNESOTA

TEMPERATURE CORRECTED  
AND HORIZONTALLY  
TAPED MEASUREMENTS

NW Cor. Sec. 1, T31, R25

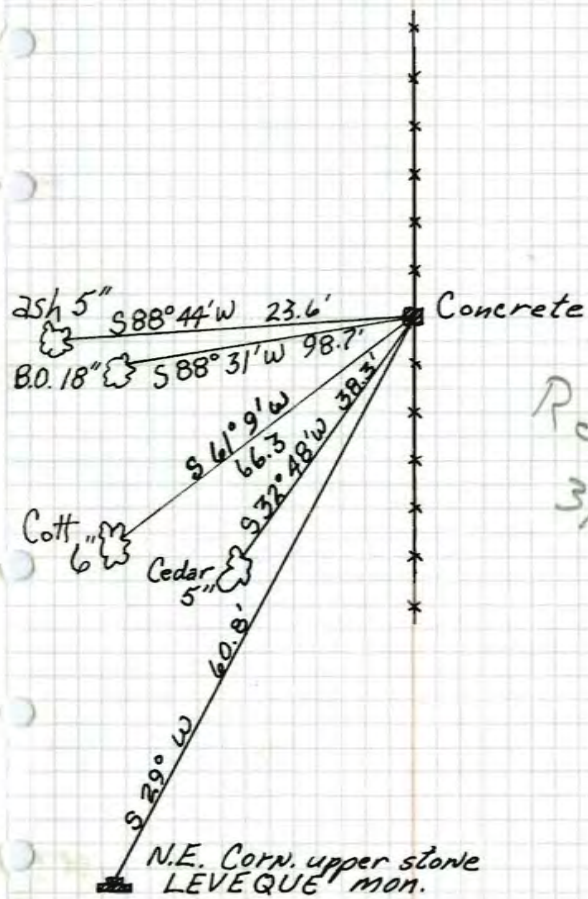
Concrete Mon. Flush



29 Mar. 63  
68°  
J. Oliver  
M.D. Anderson

NE Cor. upper Stone LEVEQUE Headstone

N.W. corner of sec. 1, T. 31 R. 25 <sup>3</sup> ✓  
concrete mon. flush



Retied  
3/29/63

July 13, 1943  
CARTWRIGHT