

# CERTIFICATE OF LOCATION OF GOVERNMENT CORNER

County of Anoka

State of Minnesota

## East $\frac{1}{4}$ Corner of Sec. 2 Township 31 Range 25

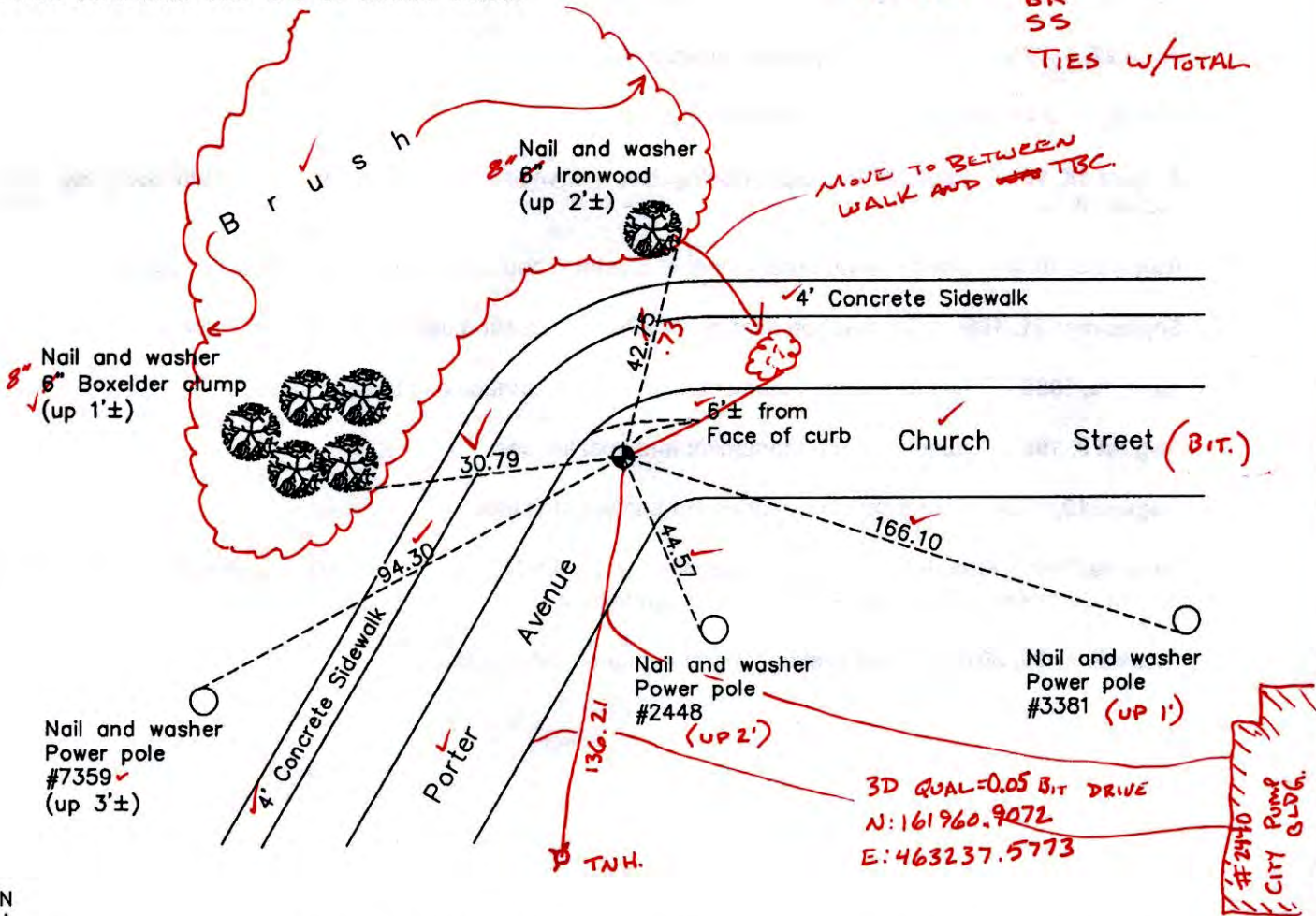
On the 27th day of June, 1957, the described corner was evidenced by a 1" iron pipe

and to perpetuate the location of said corner, at the exact location thereof, a permanent marker was placed consisting of a cast iron monument

AND on the 30th day of September, 2010, said permanent marker was found flush with the surface and the ties were updated

Updated reference ties are as shown below.

3/16/15 SH  
BK  
SS  
TIES w/TOTAL



Revision Date  
12/20/10

N.A.D. 1983 Coordinates  
(1996 Adjustment)

County Project Coordinates	
Northing	161960.8745
Easting	463237.6777
Date	6/19/01

I hereby certify that this United States public land survey monument record is correct and complete to the best of my knowledge and belief.

*Larry D. Hoium* Date 12/20/10

Larry D. Hoium, Anoka County Surveyor  
Minnesota License Number 18165

# CERTIFICATE OF LOCATION OF GOVERNMENT CORNER

County of Anoka

State of Minnesota

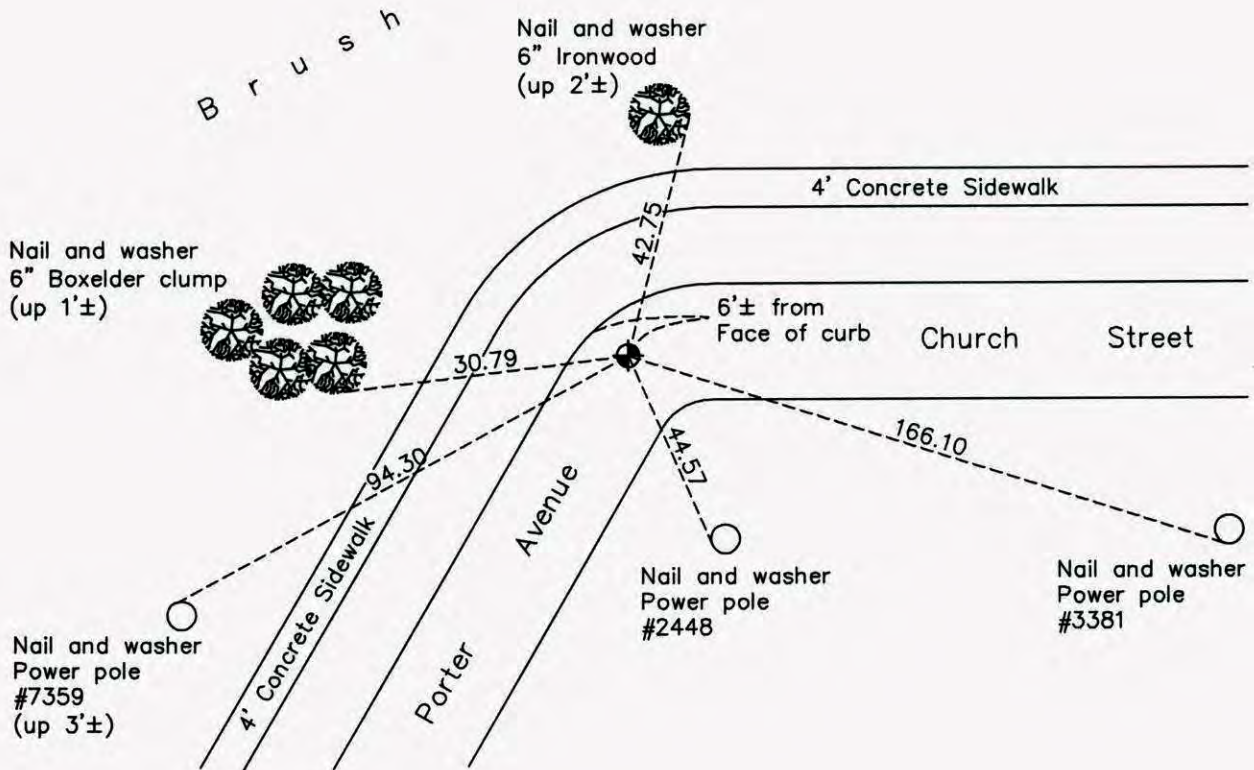
## East 1/4 Corner of Sec. 2 Township 31 Range 25

On the 27th day of June, 1957, the described corner was evidenced by a 1" iron pipe

and to perpetuate the location of said corner, at the exact location thereof, a permanent marker was placed consisting of a cast iron monument

AND on the 30th day of September, 2010, said permanent marker was found flush with the surface and the ties were updated

Updated reference ties are as shown below.



N  
W ANOKA COUNTY SURVEYOR E  
S

Revision Date  
12/20/10

N.A.D. 1983 Coordinates  
(1996 Adjustment)

County Project Coordinates	
Northing	161960.8745
Easting	463237.6777
Date	6/19/01

I hereby certify that this United States public land survey monument record is correct and complete to the best of my knowledge and belief.

*Larry D. Hoium* Date 12/20/10

Larry D. Hoium, Anoka County Surveyor

Minnesota License Number 18165

# HISTORY OF GOVERNMENT CORNER

Page No. 4

County of Anoka

State of Minnesota

East 1/4 Corner of Sec. 2 Township 31 Range 25

## **CORNER HISTORY:**

**June 27, 1957** - Found flanged iron monument 8 feet south and 2 feet east of fence corner. Established ties to monument. Tie sheet indicates that a 20" Oak is the corner.

**September 25, 1962** - Set 3/4" red iron pipe 0.8' east of the center of a 24" Oak stump believed to be the same Oak shown on an 1873 survey recorded in Book 13, Page 338. Top of iron pipe was set flush with the top of stump.

**July 28, 1966** - Found 3/4" red iron pipe and updated ties.

**August 7, 1970** - Found 1" iron pipe up 0.3'±. Top of pipe is 0.4'± from top of stump to the west.

**July 15, 1974** - Found 1" iron pipe and updated ties.

**June 27, 1977** - Found 1" iron pipe and updated ties.

**July 9, 1980** - Found 1" iron pipe and updated ties.

**August 18, 1980** - Found 1" iron pipe missing. Reset position of corner cast iron monument using ties and updated ties.

**August 8, 1984** - Found cast iron monument and established additional ties prior to construction.

**September 21, 1984** - Set cast iron monument after construction using ties and updated ties.

**June 16, 1986** - Found cast iron monument flush with the surface and updated ties.

**August 9, 1990** - Found cast iron monument and updated ties.

**August 19, 1994** - Found cast iron monument and updated ties.

**June 19, 2001** - Found cast iron monument and established NAD 1983 (1996 Adjustment) Anoka County Project Coordinates by Static GPS methods. Updated ties.

**September 30, 2010** - Found cast iron monument and updated ties.

# CERTIFICATE OF LOCATION OF GOVERNMENT CORNER

County of Anoka

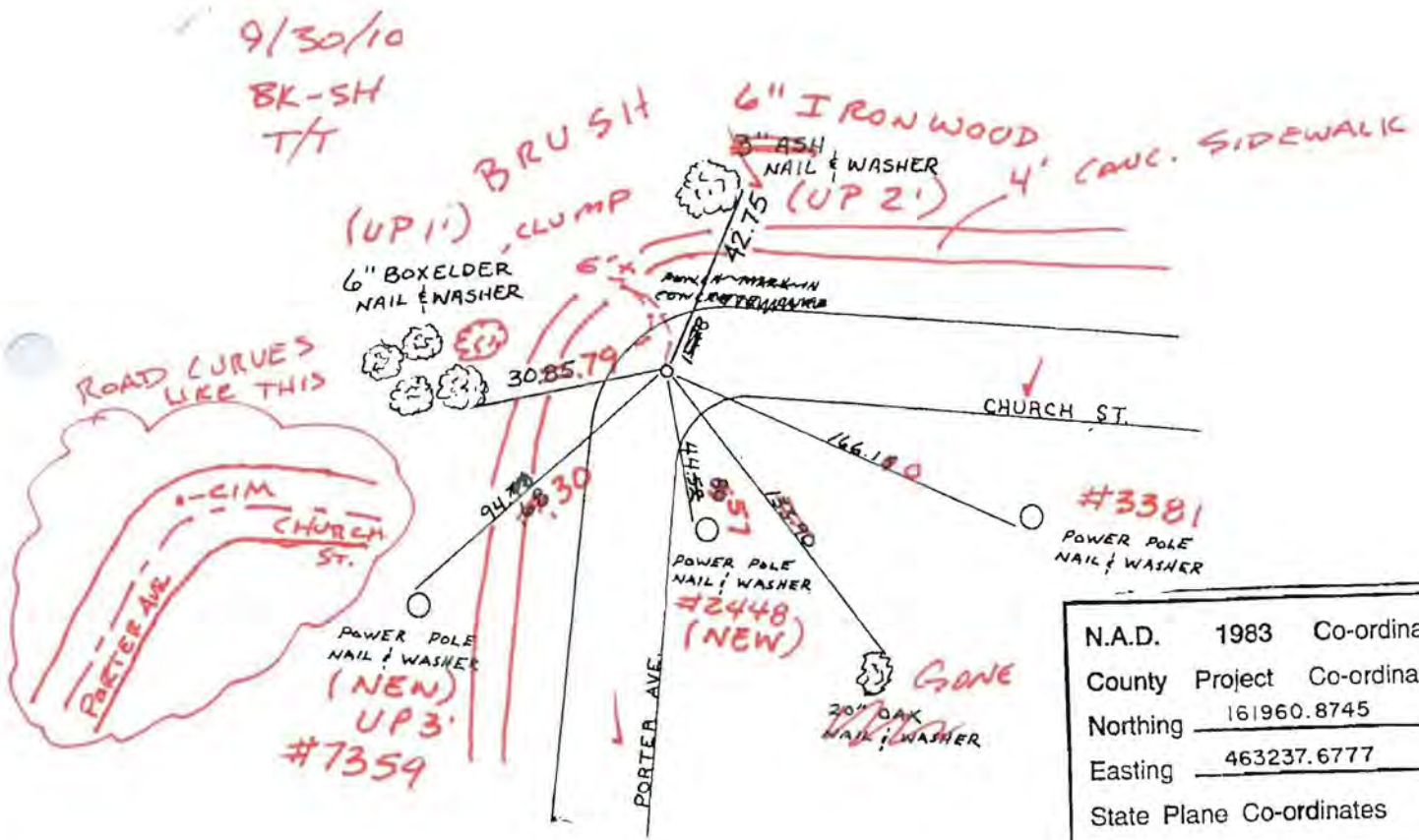
State of Minnesota

EAST 1/4 Corner of Sec. 2 Township 31 Range 25

I hereby certify that on the 27 day of June, 1957, I found the described corner which was evidenced by 1" IRON PIPE

and I further certify that to perpetuate the location of said corner, I did, at the exact location thereof, place a permanent marker consisting of CART IRON (FLUSH)  
(6" ± FROM FACE OF CURB)

which reference or witness monuments are located in the manner following:



N.A.D.	1983	Co-ordinates
County	Project	Co-ordinates
Northing		<u>161960.8745</u>
Easting		<u>463237.6777</u>
State Plane Co-ordinates		
Y		_____
X		_____
Date		<u>6/19/01</u>

Revised date	By
6-14-86	D. ROSS
8-9-90	M. Zimmerman
8-19-94	
6-19-01	B - C - K

Minnesota State Plane Coordinates  
 South Zone  
 Y \_\_\_\_\_ X \_\_\_\_\_  
 \_\_\_\_\_, \_\_\_\_\_  
 County Surveyor Date  
 Registered Land Surveyor No. \_\_\_\_\_

# CERTIFICATE OF LOCATION OF GOVERNMENT CORNER

County of Anoka

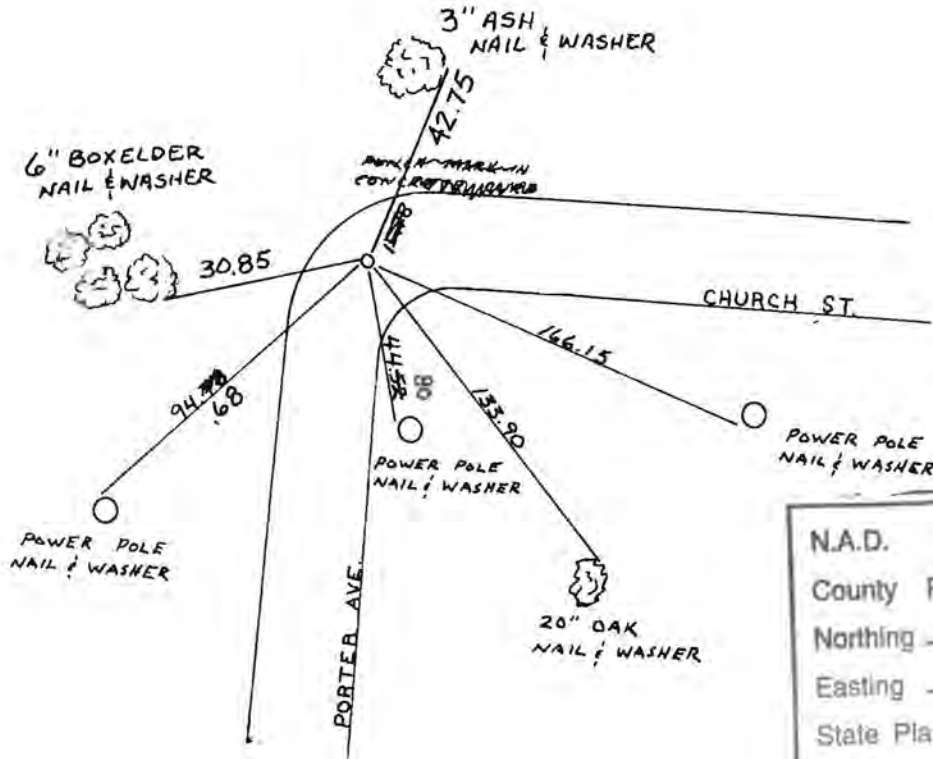
State of Minnesota

EAST 1/4 Corner of Sec. 2 Township 31 Range 25

I hereby certify that on the 27 day of June, 1957, I found the described corner which was evidenced by 1" IRON PIPE

and I further certify that to perpetuate the location of said corner, I did, at the exact location thereof, place a permanent marker consisting of CAST IRON

which reference or witness monuments are located in the manner following:



N.A.D.	1983	Co-ordinates
County	Project	Co-ordinates
Northing	161960.8745	
Easting	463237.6777	
State Plane Co-ordinates		
Y	_____	
X	_____	
Date	_____	

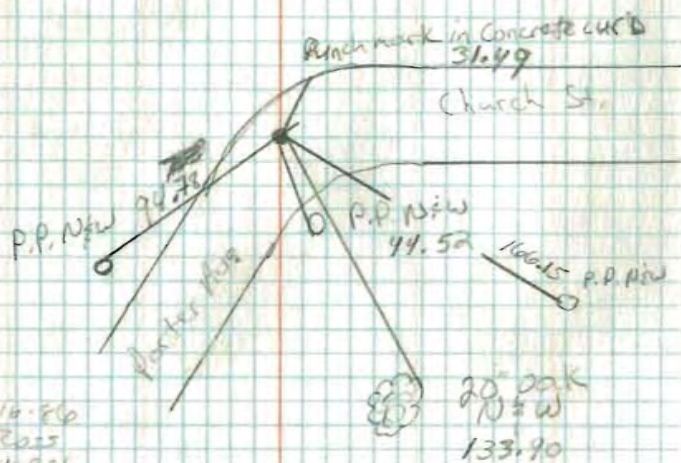
Revised date	By
6-14-86	D. ROSS
8-9-90	M. Zimmerman
8-19-94	
6-19-01	B - C - K

**Minnesota State Plane Coordinates**  
**South Zone**  
 Y \_\_\_\_\_ X \_\_\_\_\_  
 \_\_\_\_\_ , \_\_\_\_\_  
**County Surveyor** **Date**  
**Registered Land Surveyor No.** \_\_\_\_\_

East 1/4 Cor. Sec. 2 T31 R. 25

4

Found C.I. Flash, drew up NEW TR.



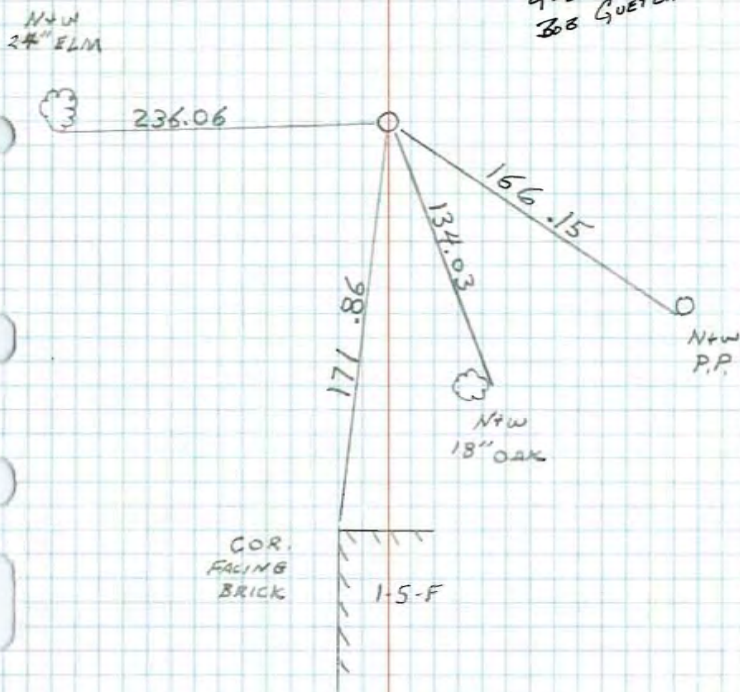
6-16-86  
D. Bass  
D. Vogel  
J. Hayes  
#3 64<sup>9</sup>F

E 1/4 CORNER SECTION 2 T31 R25

TOOK EXTRA TIES FOR CONSTRUCTION

200' 68"  
8-9-87  
H. LARSON  
B. GUETZKO  
T. RIEMENSIDER

RESET  
9-21-84  
BOB GUETZKO



# E 1/4 Cor. Sec. 2-T31-R25

1" Iron Pipe up 0.3'±  
Top of Iron Pipe is 0.4'± from top of stump to the West. Stump is reputed to be same Oak mentioned in 1873 Survey in Book 13, Pg. 338. Sept. 25, 1962  
J. Oliver  
M. D. Anderson

Set C.I. Monument in place of missing iron pipe. C.I. down .1' 8-18-80  
B. STEPHENS

Tie Check  
August 7, 1970  
D. Powell  
R. Brien  
B. Olson

Power Pole  
Nail + Washer

70.65

4" Boxelder in Group  
Nail + Washer

22.06

0.75' to center of  
14" Oak Stump

Power Pole  
Nail + Washer

22.10

17'±

Tar  
Dirt  
Road

75

86.82

Power Pole  
Nail + Washer

Tie Check  
July 15, 1974  
R. Farmer  
N. D.  
D. D.

TIE CHECK  
JUNE 27, 1977  
R. SANWERUD  
S. BRIEN  
J. STEPHENS

TIE CHECK  
7-9-80  
B. STEPHENS  
P. ROSS  
P. HORNEY

TEMPERATURE CORRECTED ROLAND W. ANDERSON  
AND HORIZONTALLY COUNTY SURVEYOR  
TAPED MEASUREMENTS ANOKA COUNTY, MINNESOTA

TOOK ADDTIES  
FOR CONSTRUCTION  
8-8-84  
NL

# E 1/4 Cor. Sec. 2-T31-R25

1" Iron Pipe up 0.3'±  
Top of I.P. is 0.4'± from top of stump to the West. Stump is reputed to be same oak mentioned in 1873 Survey in Book 13, Pg. 338.

8/7/70  
#10-70  
D. Powell  
R. Brien  
B. Olson

P.P.  
N+W

70.64

4" Boxelder in  
Group  
Nail + Washer

22.10

0.75' to center of  
14" Oak Stump

P.P.  
N+W

2.31

17'±

Dirt  
Road

Park

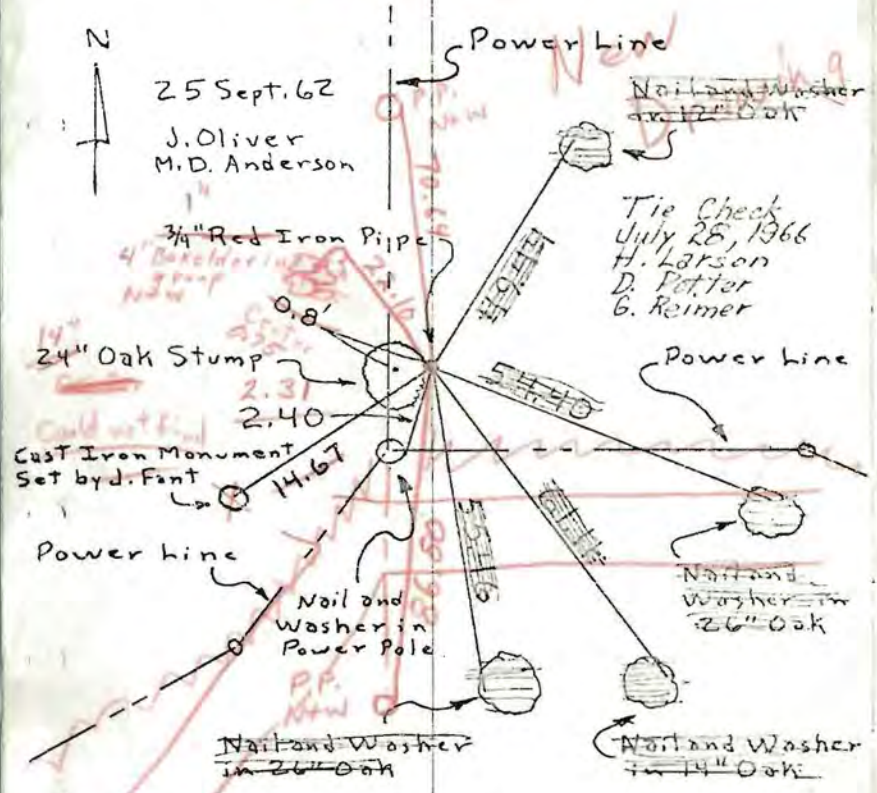
86.80

Porter  
Avenue  
(Blk Top)

P.P.  
N+W

E 1/4 Cor. Sec. 2, T31, R25

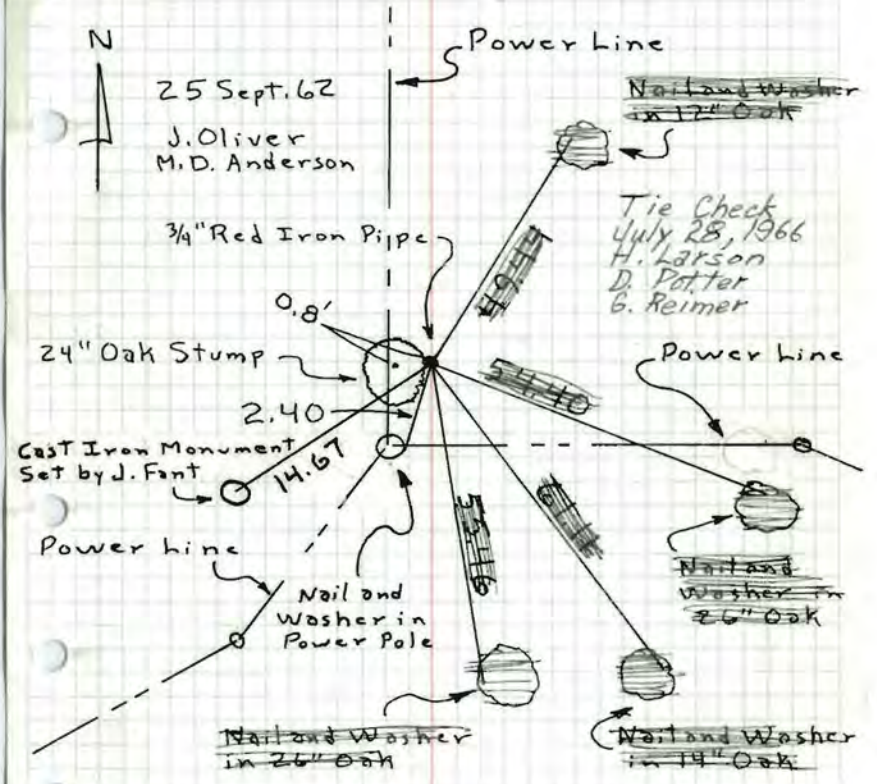
Set 3/4" Red Iron Pipe 0.8' East of Center of Stump of 24" Oak reputed to be same oak mentioned in 1873 Survey in Book 13, Pg. 338. Top of I. P. is flush with Top of Stump. *down 0.4' from*



TEMPERATURE CORRECTED AND HORIZONTALLY TAPED MEASUREMENTS  
ROLAND W. ANDERSON  
COUNTY SURVEYOR  
ANOKA COUNTY, MINNESOTA

E 1/4 Cor. Sec. 2, T31, R25

Set 3/4" Red Iron Pipe 0.8' East of Center of Stump of 24" Oak reputed to be same oak mentioned in 1873 Survey in Book 13, Pg. 338. Top of I. P. is flush with Top of Stump.



TEMPERATURE CORRECTED AND HORIZONTALLY TAPED MEASUREMENTS  
ROLAND W. ANDERSON  
COUNTY SURVEYOR  
ANOKA COUNTY, MINNESOTA



E 1/4 Cor. Sec. 2, T31, R25

Set 3/4" Red Iron Pipe 0.8' E of Center of

Stump of 24" Oak reputed to be same Oak mentioned in 1873 Survey in Book 13, Pg 338

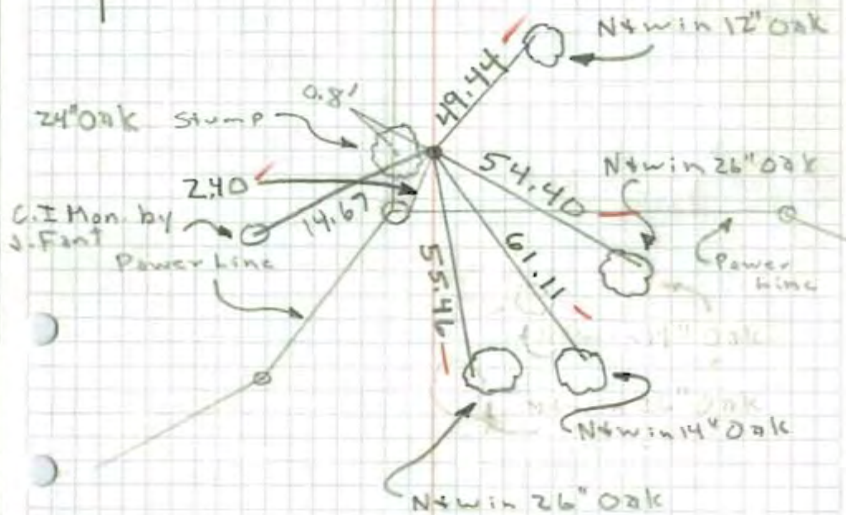
Top of I.P. is Flush with Top of Stump.



25 Sept 62  
64°

J. Oliver  
M.D. Anderson

Power line

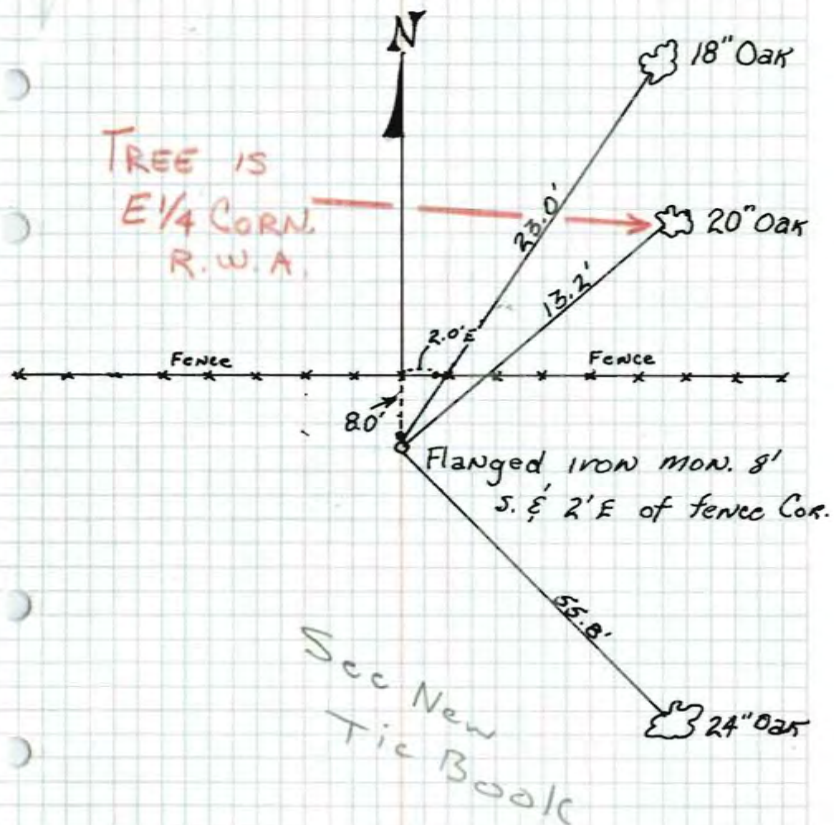


TEMP. CORR.

890

E 1/4 CORNER OF Sec. 2, T31, R25

3 ✓



6-27-57  
R.G. ANDERSON

E 1/4 Corn.

13

Sec. 2, T31, R25

By R.G. Anderson  
6-27-57

