

# CERTIFICATE OF LOCATION OF GOVERNMENT CORNER

County of Anoka

State of Minnesota

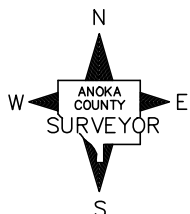
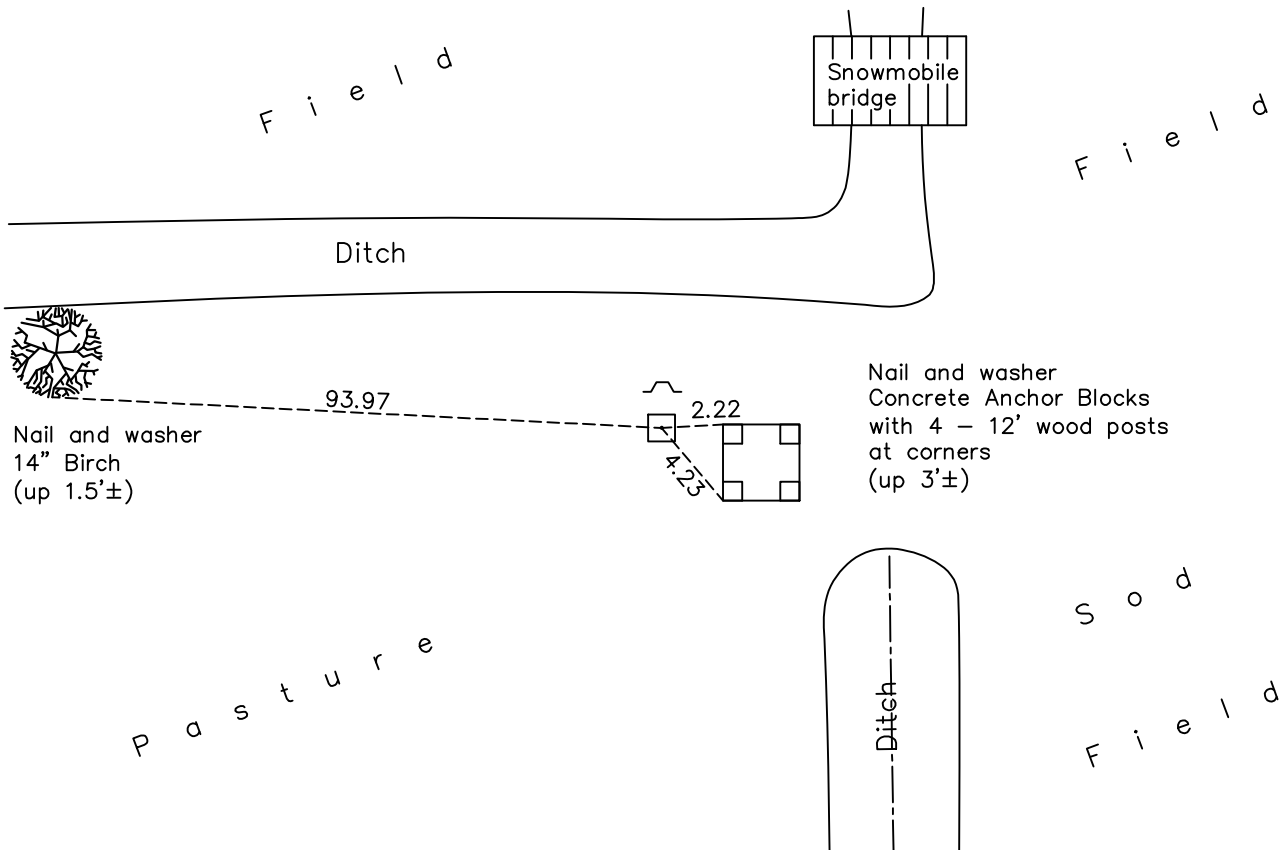
## Northeast Corner of Sec. 1 Township 31 Range 23

On the 3rd day of October, 1961, the described corner was evidenced by a granite monument

and to perpetuate the location of said corner, at the exact location thereof, a permanent marker was placed consisting of the same granite monument with a sign and post on the north side

AND on the 27th day of April, 2022, said permanent marker was found flush and the ties were updated

Updated reference ties are as shown below.



Revision Date

5/25/2022

N.A.D. 1983 Coordinates  
(1996 Adjustment)

| County Project Coordinates |                    |
|----------------------------|--------------------|
| Northing                   | <u>164113.1719</u> |
| Easting                    | <u>531998.2177</u> |
| Date                       | <u>10/09/98</u>    |

I hereby certify that this United States public land survey monument record is correct and complete to the best of my knowledge and belief.

David Zieglmeier Date 1/18/23

David Zieglmeier Anoka County Surveyor  
Minnesota License Number 46179

# HISTORY OF GOVERNMENT CORNER

Page No. 1

County of Anoka

State of Minnesota

## Northeast Corner of Sec. 1 Township 31 Range 23

### **CORNER HISTORY:**

October 28, 1944 - Reset granite stone and established ties to granite by Harvey Cartwright.

October 3, 1961 - Found 8" x 8" granite monument up 1' and updated ties.

September 3, 1964 - Found granite monument and updated ties.

July 15, 1968 - Found granite monument and updated ties.

September 7, 1971 - Found granite monument and updated ties.

May 19, 1975 - Found granite monument and updated ties.

August 8, 1977 - Found granite monument and updated ties.

July 29, 1982 - Reset granite monument flush and updated ties.

August 2, 1990 - Found granite monument and updated ties.

July 24, 1995 - Found granite monument and updated ties.

October 9, 1998 - Found granite monument, established NAD 1983 (1996 adj.) Anoka County project coordinates by static GPS methods and updated ties.

April 22, 2014 - Found granite monument, verified position by VRS GPS methods and updated ties.

June 6, 2019 - Found granite monument flush, verified position by VRS GPS methods and updated ties.

April 27, 2022 - Found granite monument flush, verified position by VRS GPS methods and updated ties.