

CERTIFICATE OF LOCATION OF GOVERNMENT CORNER

County of Anoka

State of Minnesota

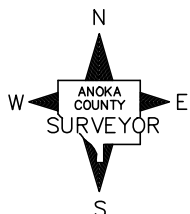
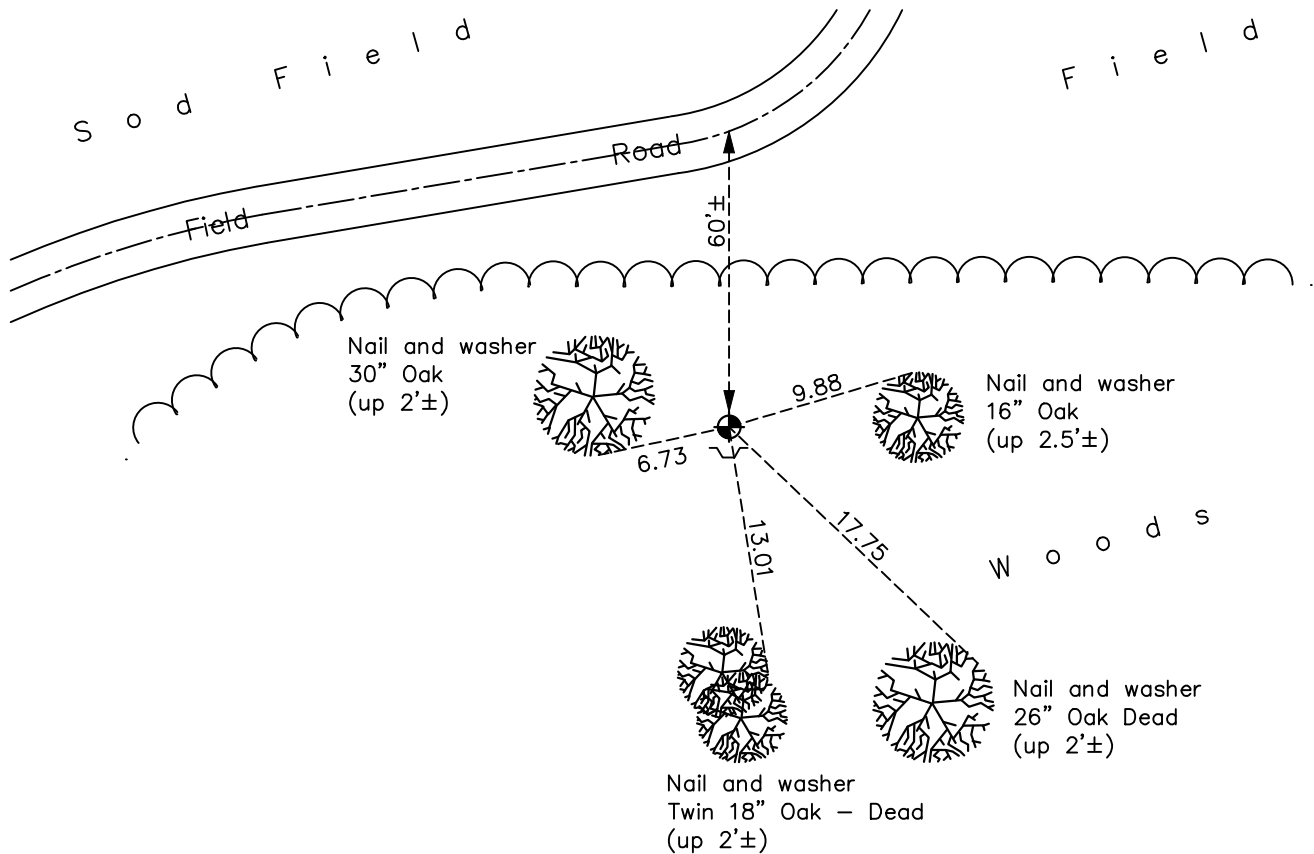
North $\frac{1}{4}$ Corner of Sec. 1 Township 31 Range 23

On the 15th day of May, 1974, the described corner was evidenced by a cast iron monument from area resurvey

and to perpetuate the location of said corner, at the exact location thereof, a permanent marker was placed consisting of a cast iron monument with a sign and post on the south side

AND on the 4th day of May, 2022, said permanent marker was found flush and the ties were updated

Updated reference ties are as shown below.



Revision Date

5/25/2022

N.A.D. 1983 Coordinates
(1996 Adjustment)

County Project Coordinates	
Northing	<u>164143.2354</u>
Easting	<u>529365.8843</u>
Date	<u>11/05/99</u>

I hereby certify that this United States public land survey monument record is correct and complete to the best of my knowledge and belief.

David Zieglmeier Date 1/18/23

David Zieglmeier Anoka County Surveyor
Minnesota License Number 46179

HISTORY OF GOVERNMENT CORNER

Page No. 2

County of Anoka

State of Minnesota

North 1/4 Corner of Sec. 1 Township 31 Range 23

CORNER HISTORY:

May 15, 1974 - Set cast iron monument flush using area resurvey and established ties to monument.

May 19, 1975 - Found cast iron monument and updated ties.

August 8, 1977 - Found cast iron monument and updated ties.

June 17, 1980 - Found cast iron monument and updated ties.

July 13, 1983 - Found cast iron monument and updated ties.

June 5, 1986 - Found cast iron monument and updated ties.

August 2, 1990 - Found cast iron monument and updated ties.

July 24, 1995 - Found cast iron monument and updated ties.

August 24, 1999 - Found cast iron monument and updated ties.

November 5, 1999 - Established NAD 1983 (1996 adj.) Anoka County project coordinates by static GPS methods.

July 5, 2006 - Found cast iron monument and updated ties.

April 22, 2014 - Found cast iron monument and updated ties.

June 7, 2019 - Found cast iron monument flush and updated ties.

May 4th, 2022 - Found cast iron monument flush, verified position by VRS GPS method. Updated ties.