

CERTIFICATE OF LOCATION OF GOVERNMENT CORNER

County of Anoka

State of Minnesota

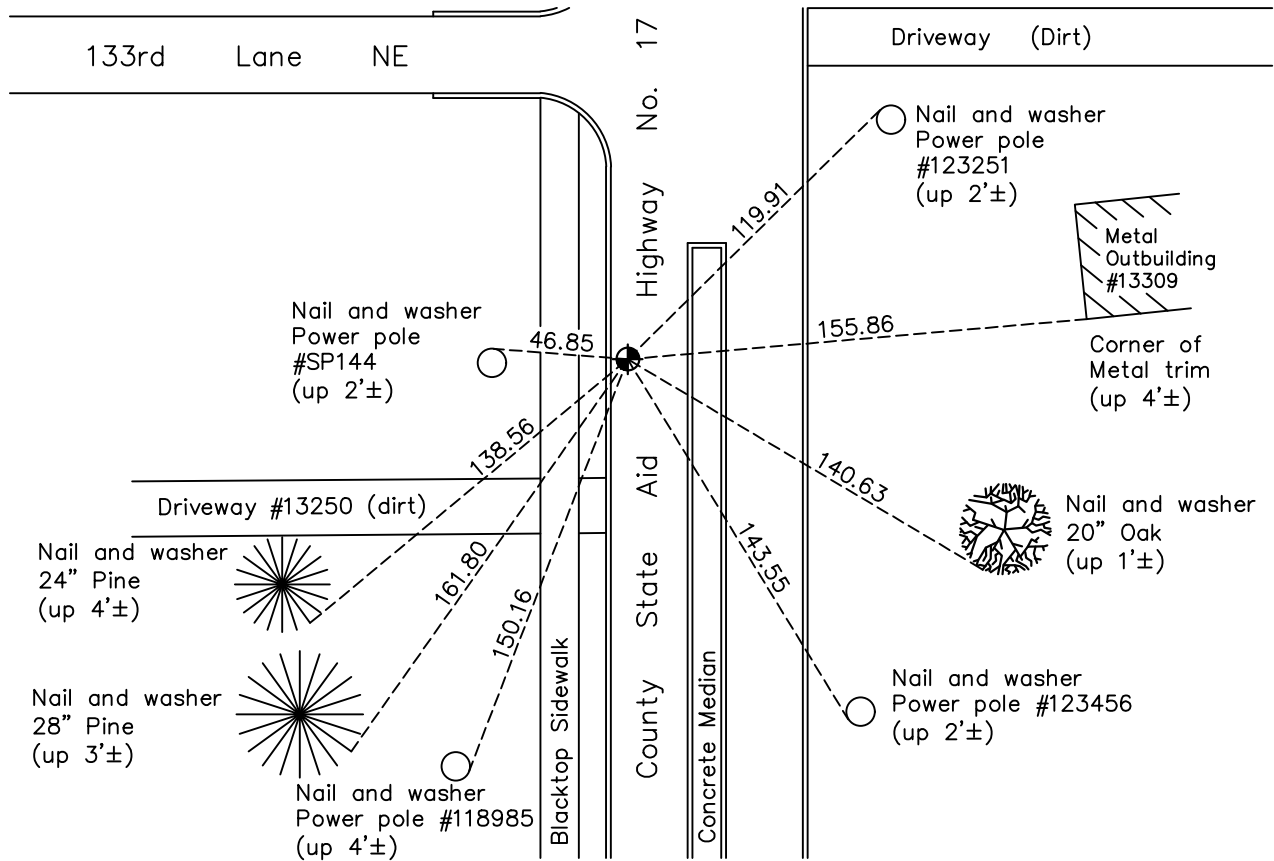
Northeast Corner of Sec. 2 Township 31 Range 23

On the 8th day of August, 1969, the described corner was evidenced by area resurvey

and to perpetuate the location of said corner, at the exact location thereof, a permanent marker was placed consisting of a cast iron monument

AND on the 29th day of April, 2022, said permanent marker was found 3'± east of fog line and the ties were updated

Updated reference ties are as shown below.



Revision Date
5/25/2022

N.A.D. 1983 Coordinates
(1996 Adjustment)

County Project Coordinates	
Northing	<u>164157.1092</u>
Easting	<u>526737.2396</u>
Date	<u>10/15/98</u>

I hereby certify that this United States public land survey monument record is correct and complete to the best of my knowledge and belief.

David Zieglmeier Date 1/18/23

David Zieglmeier Anoka County Surveyor
Minnesota License Number 46179

HISTORY OF GOVERNMENT CORNER

Page No. 3

County of Anoka

State of Minnesota

Northeast Corner of Sec. 2 Township 31 Range 23

CORNER HISTORY:

August 8, 1969 - Set cast iron monument flush using area resurvey and established ties to monument.

August 26, 1971 - Found cast iron monument and updated ties.

June 16, 1972 - Raised cast iron monument flush.

May 28, 1975 - Found cast iron monument and updated ties.

August 8, 1977 - Found cast iron monument and updated ties.

May 29, 1980 - Found cast iron monument and updated ties.

June 24, 1983 - Found cast iron monument and updated ties.

August 21, 1984 - Found cast iron monument and updated ties.

June 2, 1986 - Found cast iron monument and updated ties.

July 20, 1990 - Found cast iron monument and updated ties.

July 13, 1995 - Found cast iron monument and updated ties.

October 15, 1998 - Found cast iron monument, established NAD 1983 (1996 adj.) Anoka County project coordinates by static GPS methods and updated ties.

July 5, 2006 - Found cast iron monument down and raised flush with road. Updated ties.

May 11, 2012 - Found cast iron monument, set construction ties, verified position by VRS GPS methods and updated corner ties prior to road construction. Removed monument.

October 25, 2013 - Set cast iron monument flush after road construction using static GPS methods. Verified position by VRS GPS methods and updated ties.

April 21, 2014 - Found cast iron monument, verified position by VRS GPS methods and updated ties.

June 6, 2019 - Found cast iron monument, verified position by VRS GPS methods and updated ties.

April 29, 2022 - Found cast iron monument, verified position by VRS GPS methods and updated ties.