

# CERTIFICATE OF LOCATION OF GOVERNMENT CORNER

County of Anoka

State of Minnesota

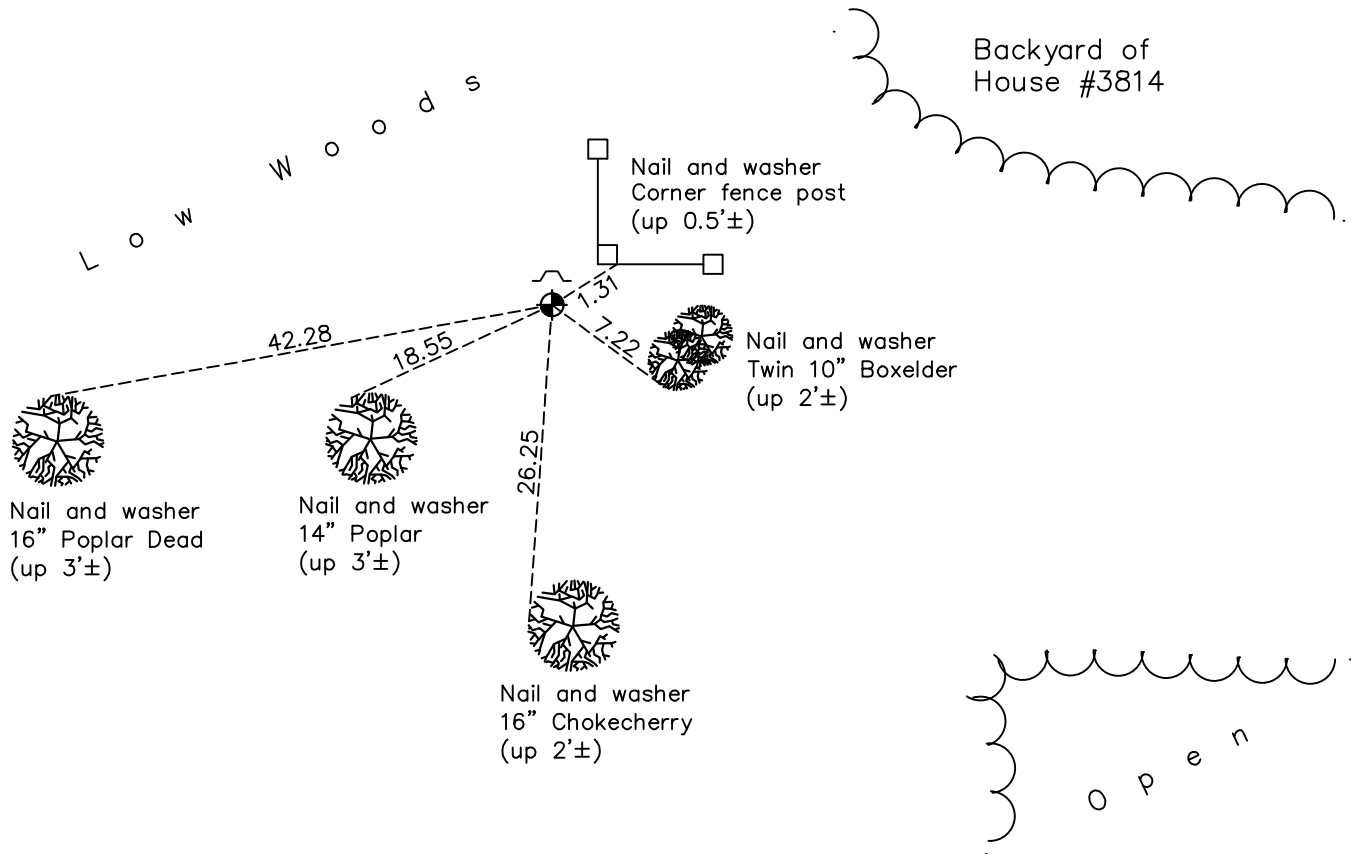
## North 1/4 Corner of Sec. 2 Township 31 Range 23

On the 14th day of May, 1975, the described corner was evidenced by a found cast iron monument set previously (unknown date) using area resurvey

and to perpetuate the location of said corner, at the exact location thereof, a permanent marker was placed consisting of a cast iron monument with a sign and post on the north side

AND on the 28th day of April, 2022, said permanent marker was found up 0.1'± and the ties were updated

Updated reference ties are as shown below.



Revision Date  
5/25/2022

N.A.D. 1983 Coordinates  
(1996 Adjustment)

County Project Coordinates	
Northing	<u>164203.9002</u>
Easting	<u>524104.1266</u>
Date	<u>11/04/99</u>

I hereby certify that this United States public land survey monument record is correct and complete to the best of my knowledge and belief.

*David Zieglmeier* Date 1/18/23

David Zieglmeier Anoka County Surveyor  
Minnesota License Number 46179

# HISTORY OF GOVERNMENT CORNER

Page No. 4

County of Anoka

State of Minnesota

North 1/4 Corner of Sec. 2 Township 31 Range 23

## **CORNER HISTORY:**

Unknown Date - Set cast iron monument using area resurvey and established ties to monument.

May 14, 1975 - Found cast iron monument and updated ties.

August 31, 1977 - Found cast iron monument and updated ties.

November 18, 1980 - Found cast iron monument and updated ties.

August 2, 1995 - Found cast iron monument and updated ties.

November 4, 1999 - Found cast iron monument, established NAD 1983 (1996 adj.) Anoka County project coordinates by static GPS methods and updated ties.

June 30, 2014 - Found cast iron monument up 0.1' and updated ties.

June 7, 2019 - Found cast iron monument up 0.1' and updated ties.

April 28, 2022 - Found cast iron monument up 0.1', Verified position by VRS GPS method and updated ties.