

CERTIFICATE OF LOCATION OF GOVERNMENT CORNER

County of Anoka

State of Minnesota

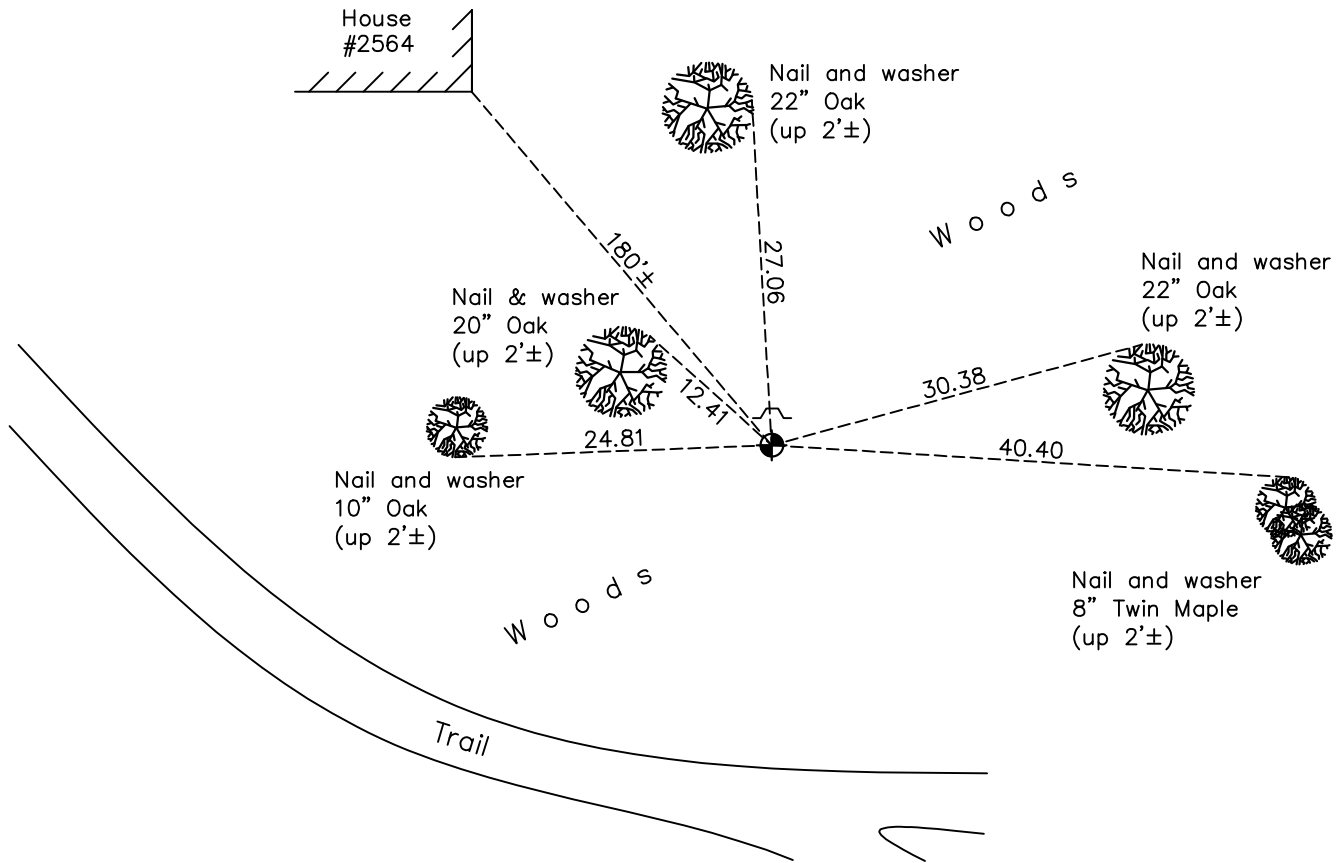
Northwest Corner of Sec. 3 Township 31 Range 23

On the 13th day of January, 1978, the described corner was evidenced by area resurvey

and to perpetuate the location of said corner, at the exact location thereof, a permanent marker was placed consisting of a cast iron monument with a sign and post on the north side

AND on the 28th day of April, 2022, said permanent marker was found flush and the ties were updated

Updated reference ties are as shown below.



Revision Date
6/10/2022

N.A.D. 1983 Coordinates
 (1996 Adjustment)

County Project Coordinates	
Northing	<u>164244.9833</u>
Easting	<u>516176.0663</u>
Date	<u>11/15/99</u>

I hereby certify that this United States public land survey monument record is correct and complete to the best of my knowledge and belief.

David Zieglmeier Date 2/8/23

David Zieglmeier Anoka County Surveyor
 Minnesota License Number 46179

HISTORY OF GOVERNMENT CORNER

Page No. 7

County of Anoka

State of Minnesota

Northwest Corner of Sec. 3 Township 31 Range 23

CORNER HISTORY:

January 13, 1978 - Set cast iron monument flush using area resurvey and established ties to monument.

June 17, 1980 - Found cast iron monument and updated ties.

June 10, 1986 - Found cast iron monument and updated ties.

August 8, 1990 - Found cast iron monument and updated ties.

August 3, 1995 - Found cast iron monument and updated ties.

November 15, 1999 - Established NAD 1983 (1996 adj.) Anoka County project coordinates by static GPS methods.

May 13, 2014 - Found cast iron monument and updated ties.

June 7, 2019 - Found cast iron monument flush and updated ties.

April 28, 2022 - Found cast iron monument flush and verified position by VRS GPS method. Updated ties.