

# CERTIFICATE OF LOCATION OF GOVERNMENT CORNER

County of Anoka

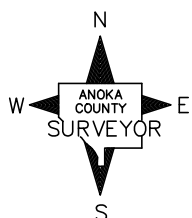
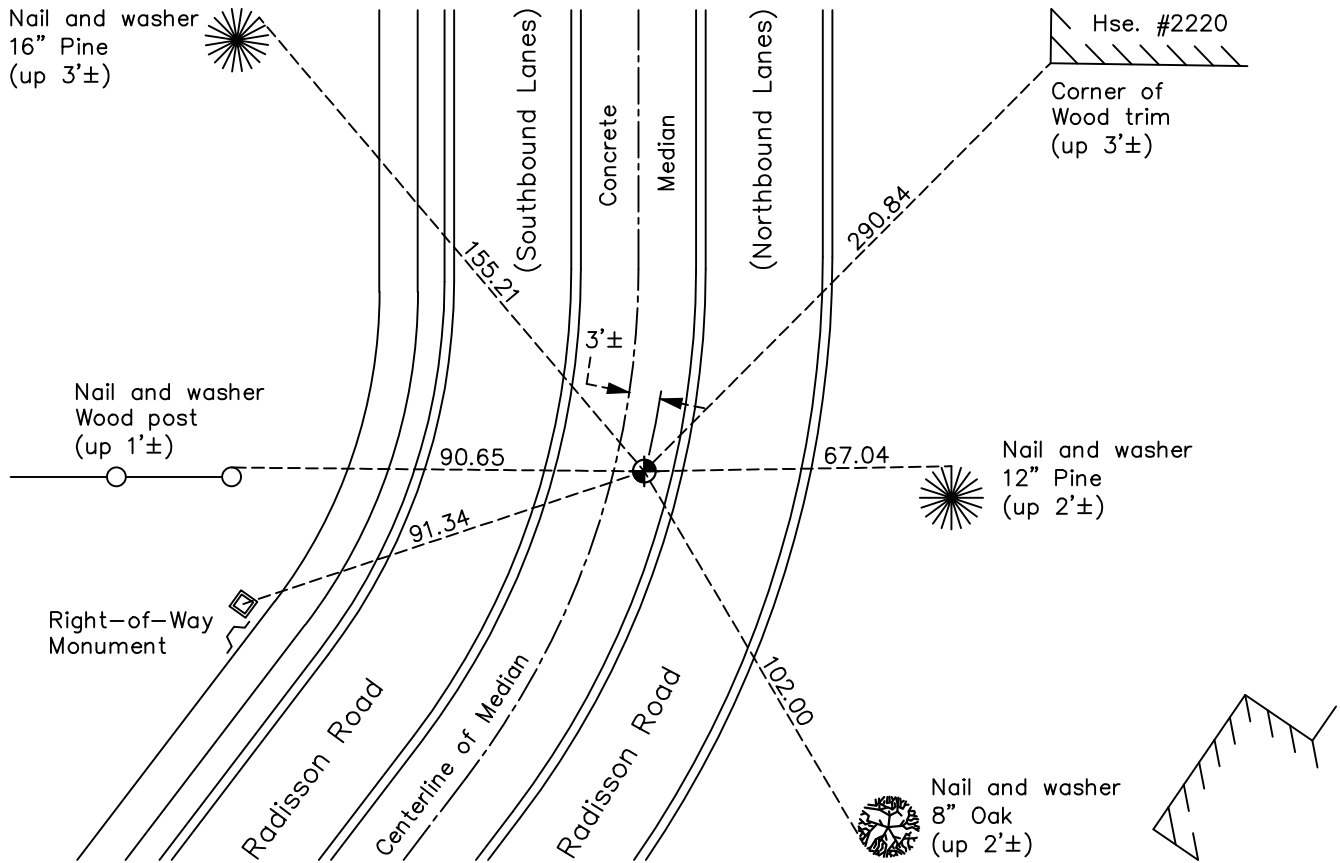
State of Minnesota

## North $\frac{1}{4}$ Corner of Sec. 4 Township 31 Range 23

On the 6th day of April, 1962, the described corner was evidenced by a 1/2" iron pipe on the surface and a concrete wheel with iron rod in center down 1.5'± and to perpetuate the location of said corner, at the exact location thereof, a permanent marker was placed consisting of a cast iron monument

AND on the 28th day of April, 2022, said permanent marker was found flush and the ties were updated

Updated reference ties are as shown below.



Revision Date  
6/10/2022

N.A.D. 1983 Coordinates  
(1996 Adjustment)

County Project Coordinates	
Northing	<u>164233.6595</u>
Easting	<u>513569.5885</u>
Date	<u>10/27/98</u>

I hereby certify that this United States public land survey monument record is correct and complete to the best of my knowledge and belief.

*David Zieglmeier* Date 2/8/23

David Zieglmeier Anoka County Surveyor  
Minnesota License Number 46179

# HISTORY OF GOVERNMENT CORNER

Page No. 8

County of Anoka

State of Minnesota

North 1/4 Corner of Sec. 4 Township 31 Range 23

## **CORNER HISTORY:**

April 26, 1960 - Found Emery wheel with an iron pipe in the center and established ties to iron pipe.

April 6, 1962 - Found 1/2" iron pipe flush and a concrete wheel with an iron rod in the center down 1.5'±. Drove down iron rod and set a cast iron monument flush. Updated ties.

June 19, 1964 - Found cast iron monument and updated ties.

July 15, 1968 - Found cast iron monument and updated ties.

August 31, 1971 - Found cast iron monument and updated ties.

May 14, 1975 - Found cast iron monument and updated ties.

August 8, 1977 - Found cast iron monument and updated ties.

June 3, 1980 - Found cast iron monument flush and updated ties.

July 6, 1983 - Found cast iron monument and updated ties.

June 5, 1986 - Found cast iron monument and updated ties.

July 20, 1990 - Found cast iron monument and updated ties.

July 28, 1995 - Found cast iron monument and updated ties.

October 27, 1998 - Found cast iron monument, established NAD 1983 (1996 adj.) Anoka County project coordinates by static GPS methods and updated ties.

May 2, 2006 - Raised cast iron monument flush and updated ties.

September 20, 2011 - Cast iron monument lost due to road construction. Set temporary point and verified position by static GPS methods.

July 8, 2014 - Set cast iron monument flush in concrete median using static GPS methods. Verified position by VRS GPS methods and updated ties.

June 7, 2019 - Found cast iron monument flush, verified position by VRS GPS methods and updated ties.

April 28, 2022 - Found cast iron monument flush, verified position by VRS GPS methods and updated ties.