

CERTIFICATE OF LOCATION OF GOVERNMENT CORNER

County of Anoka

State of Minnesota

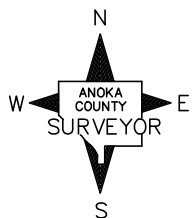
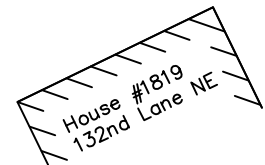
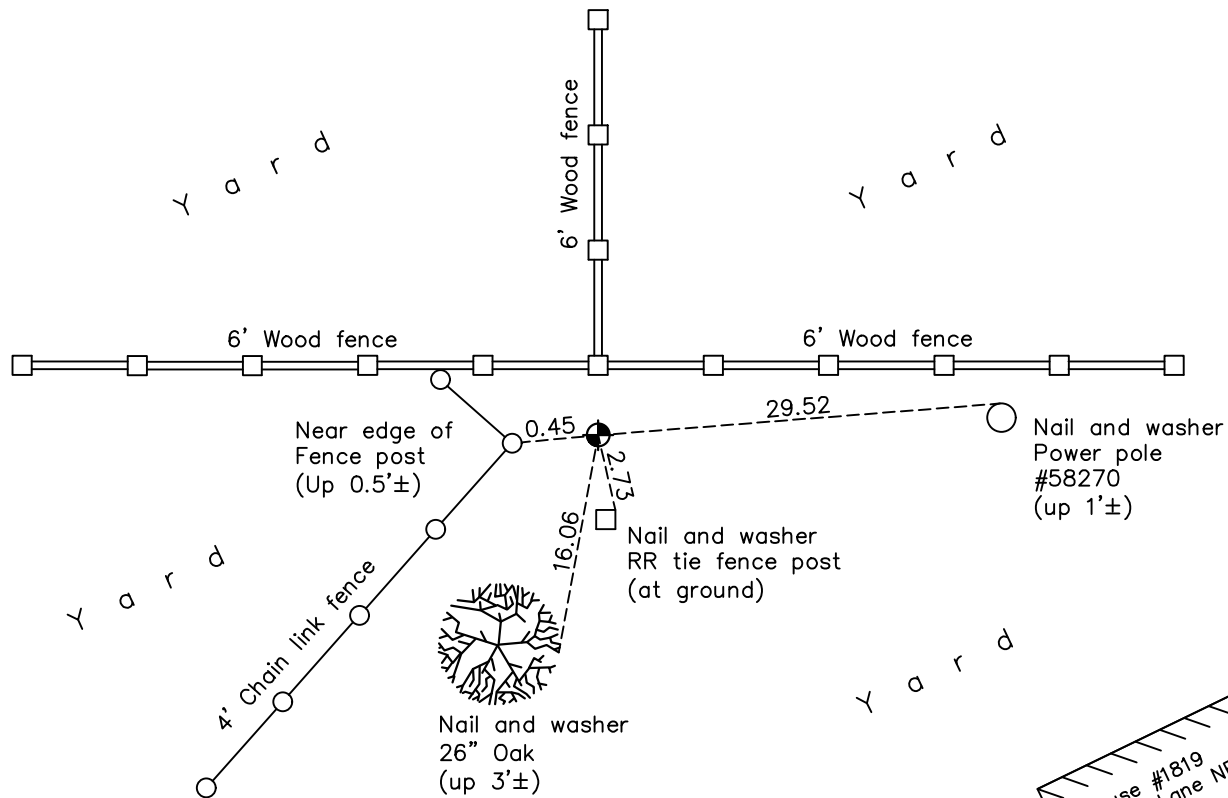
Northwest Corner of Sec. 4 Township 31 Range 23

On the 25th day of July, 1960, the described corner was evidenced by a 1" iron pipe

and to perpetuate the location of said corner, at the exact location thereof, a permanent marker was placed consisting of a cast iron monument

AND on the 4th day of May, 2022, said permanent marker was found down 0.3'± and the ties were updated

Updated reference ties are as shown below.



Revision Date
6/10/2022

N.A.D. 1983 Coordinates
 (1996 Adjustment)

County Project Coordinates	
Northing	<u>164252.3389</u>
Easting	<u>510928.5623</u>
Date	<u>10/28/98</u>

I hereby certify that this United States public land survey monument record is correct and complete to the best of my knowledge and belief.
David Zieglmeier Date 2/8/23
 David Zieglmeier Anoka County Surveyor
 Minnesota License Number 46179

HISTORY OF GOVERNMENT CORNER

Page No. 9

County of Anoka

State of Minnesota

Northwest Corner of Sec. 4 Township 31 Range 23

CORNER HISTORY:

July 25, 1960 - Found 1" iron pipe up 2" and established ties to iron pipe.

July 7, 1964 - Found pinched 1" iron pipe up 2" and updated ties.

July 15, 1968 - Found iron pipe and updated ties.

September 7, 1971 - Found iron pipe and updated ties.

August 7, 1975 - Found pinched iron pipe and replaced with a cast iron monument flush. Updated ties.

August 9, 1977 - Found cast iron monument and updated ties.

June 3, 1980 - Found cast iron monument and updated ties.

July 11, 1983 - Found cast iron monument and updated ties.

June 5, 1986 - Found cast iron monument and updated ties.

June 29, 1990 - Found cast iron monument and updated ties.

July 28, 1995 - Found cast iron monument and updated ties.

October 28, 1998 - Found cast iron monument, established NAD 1983 (1996 adj.) Anoka County project coordinates by static GPS methods and updated ties.

May 13, 2014 - Found cast iron monument down 0.5'± and updated ties.

June 11, 2019 - Found cast iron monument down 0.5'± and updated ties.

May 4th, 2022 - Found cast iron monument down 0.3'± and verified position by VRS GPS method. Updated ties