

CERTIFICATE OF LOCATION OF GOVERNMENT CORNER

County of Anoka

State of Minnesota

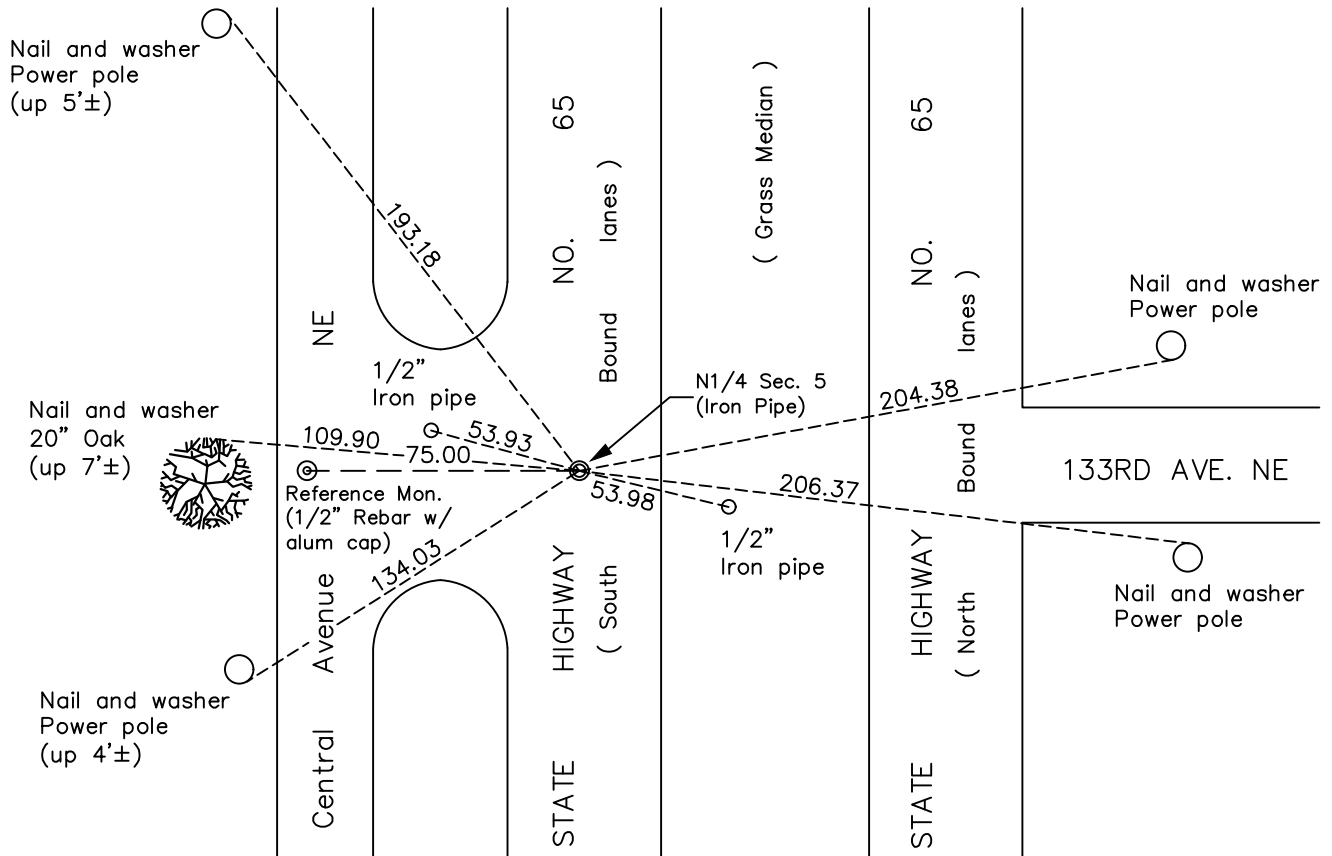
North 1/4 Corner of Sec. 5 Township 31 Range 23

On the 29th day of August, 2006, the described corner was evidenced by an area resurvey

and to perpetuate the location of said corner, at the exact location thereof, a permanent marker was placed consisting of 1/2" iron pipe

AND on the 13th day of June, 2023, said permanent marker was set 1/2" x 2' rebar w/ Alum cap Reference monument (index #1627) was set 75' westerly of Section Corner.

Updated reference ties are as shown below.



N

 W E
 S

Revision Date
8/01/2023

N.A.D. 1983 Coordinates
(1996 Adjustment)

County Project Coordinates	
Northing	164261.8282
Easting	508273.2439
Date	8/29/06

I hereby certify that this United States public land survey monument record is correct and complete to the best of my knowledge and belief.

David Zieglmeier Date 12/7/23

David M. Zieglmeier, Anoka County Surveyor
 Minnesota License Number 46179

REFERENCE MONUMENT FOR GOVERNMENT CORNER

Reference to County of Anoka State of Minnesota

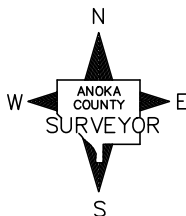
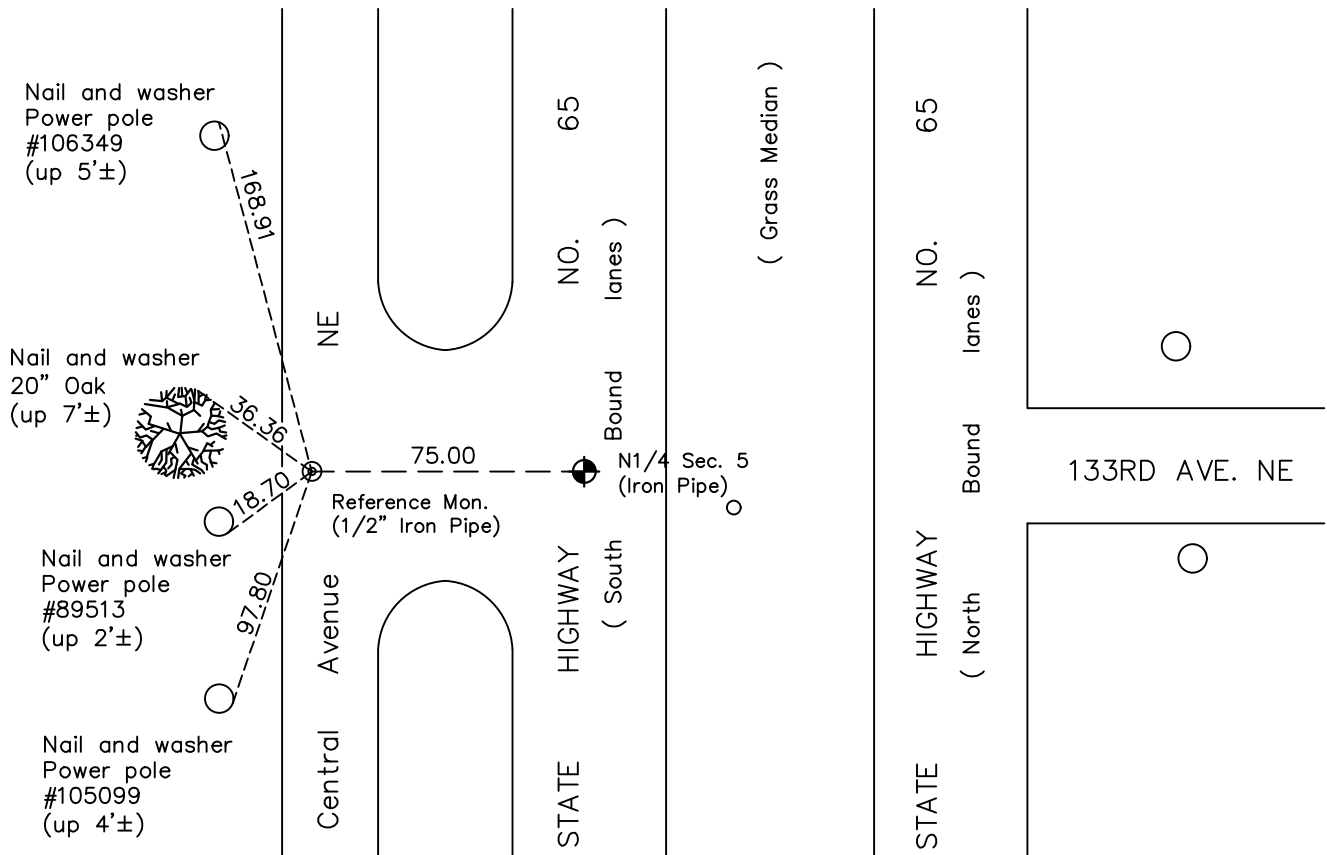
North 1/4 Corner of Sec. 5 Township 31 Range 32

On the 13th day of June, 2023, the described reference monument was evidenced by a computed position 75' westerly along the section line

and to reference the location of said corner, at the exact location thereof, a permanent marker was placed consisting of a 1/2" X 2' long rebar with Aluminum County cap and punch mark

AND on the 13th day of June, 2023, said permanent marker was set flush using RTK GPS method and ties were established to the reference monument

Updated reference ties are as shown below.



REFERENCE MONUMENT

N.A.D. 1983 (2011 Adj.)

Revision Date

8/01/2023

County Project Coordinates	
Northing	164261.6832
Easting	508198.2440
Date	06/13/2023

HISTORY OF GOVERNMENT CORNER

Page No. 10

County of Anoka

State of Minnesota

North 1/4 Corner of Sec. 5 Township 31 Range 23

CORNER HISTORY:

June 1957 - Found iron and established ties to iron by Wm. L. Voight.

September 24, 1962 - Set head of cast iron monument flush and updated ties.

June 29, 1964 - Found head of cast iron monument and updated ties.

July 19, 1968 - Found head of cast iron monument and updated ties.

August 26, 1969 - Set cast iron monument flush and updated ties.

May 16, 1975 - Raised cast iron monument flush and updated ties.

August 11, 1977 - Found cast iron monument and updated ties.

June 3, 1980 - Found cast iron monument and updated ties.

July 11, 1990 - Found cast iron monument and updated ties.

July 18, 1995 - Found cast iron monument and updated ties.

April 11, 1996 - Found cast iron monument and updated ties.

August 29, 2006 - Cast iron monument lost due to road construction. Set a 1/2" iron pipe using area resurvey and established NAD 1983 (1996 adj) Anoka County project coordinates by static GPS methods.

June 13, 2023 - Set **reference monument** to a computed position 75' westerly along the section line using RTK GPS method consisting of a 1/2" x 2' rebar with Anoka County aluminum cap and punch mark set flush in roadway. Established ties to the **reference monument**.