

# CERTIFICATE OF LOCATION OF GOVERNMENT CORNER

County of Anoka

State of Minnesota

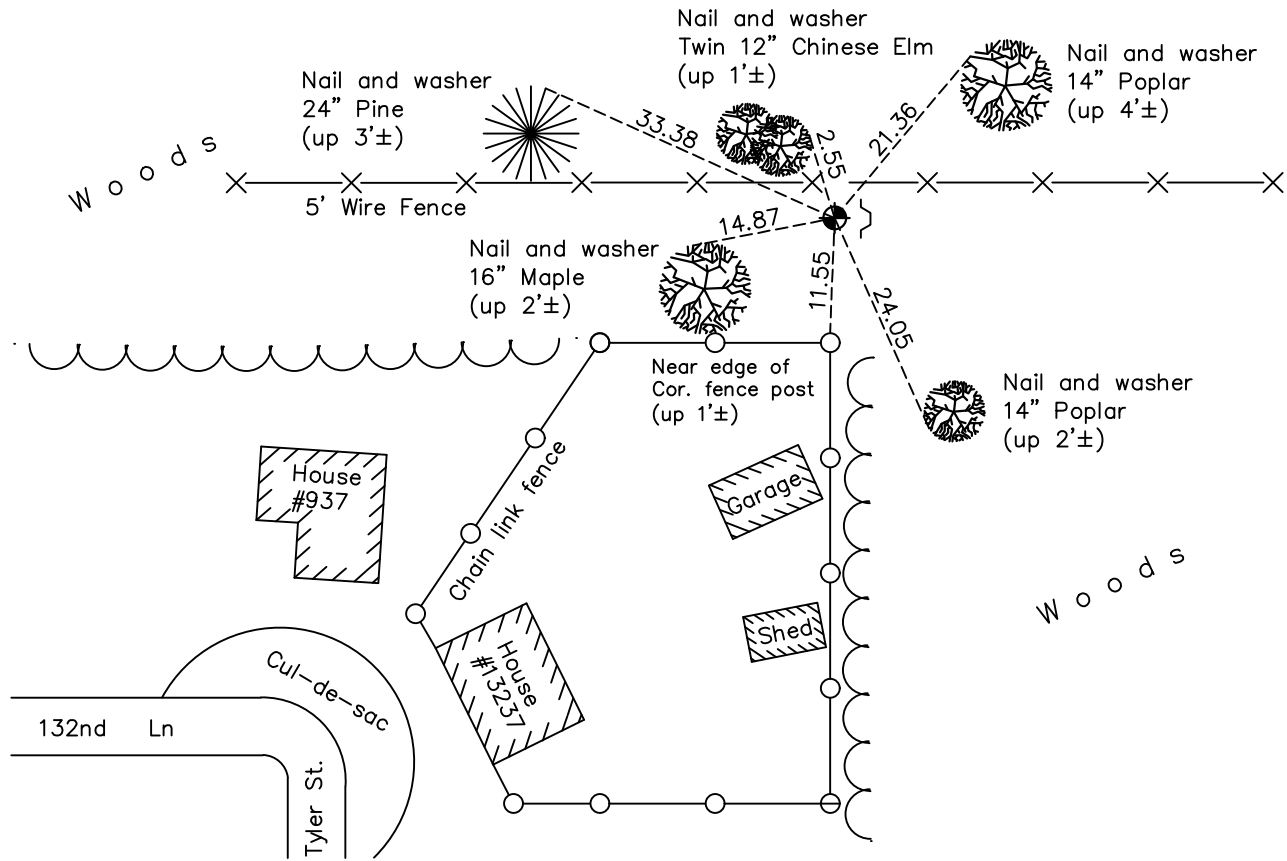
## Northwest Corner of Sec. 5 Township 31 Range 23

On the 3rd day of April, 1963, the described corner was evidenced by a 1/2" iron pipe

and to perpetuate the location of said corner, at the exact location thereof, a permanent marker was placed consisting of a cast iron monument with a sign and post on the east side

AND on the 24th day of January, 2023, said permanent marker was found down 1.0'± with a sign and post on east side and the Coordinates were verified by County RTK GPS method

Updated reference ties are as shown below.



Revision Date  
 2/17/2023

N.A.D. 1983 Coordinates  
 (1996 Adjustment)

County Project Coordinates	
Northing	164256.7597
Easting	505651.5522
Date	11/09/98

I hereby certify that this United States public land survey monument record is correct and complete to the best of my knowledge and belief.  
*David Zieglmeier* Date 2/28/23  
 David Zieglmeier Anoka County Surveyor  
 Minnesota License Number 46179

# HISTORY OF GOVERNMENT CORNER

Page No. 11

County of Anoka

State of Minnesota

## Northwest Corner of Sec. 5 Township 31 Range 23

### **CORNER HISTORY:**

June 1957 - Found iron and established ties to iron by Harvey Cartwright.

April 3, 1963 - Found iron pipe and updated ties.

June 15, 1964 - Found 1/2" iron pipe up 0.7'± and updated ties.

July 15, 1968 - Found iron pipe and updated ties.

August 25, 1971 - Found 1/2" iron pipe and replaced with a cast iron monument flush. Updated ties.

May 14, 1975 - Found cast iron monument flush and updated ties.

August 9, 1977 - Found cast iron monument and updated ties.

June 3, 1980 - Found cast iron monument and updated ties.

June 28, 1990 - Found cast iron monument and updated ties.

November 9, 1998 - Found cast iron monument, established NAD 1983 (1996 adj.) Anoka County project coordinates by static GPS methods and updated ties.

May 13, 2014 - Found cast iron monument down 0.5'± and updated ties.

June 11, 2019 - Found cast iron monument down 1'± and updated ties.

April 28, 2022 - Found cast iron monument down 1'± and verified position by VRS GPS method. Updated ties.

January 24, 2023 - Found cast iron monument down 1'±, verified position correct by County RTK GPS method