

CERTIFICATE OF LOCATION OF GOVERNMENT CORNER

County of Anoka

State of Minnesota

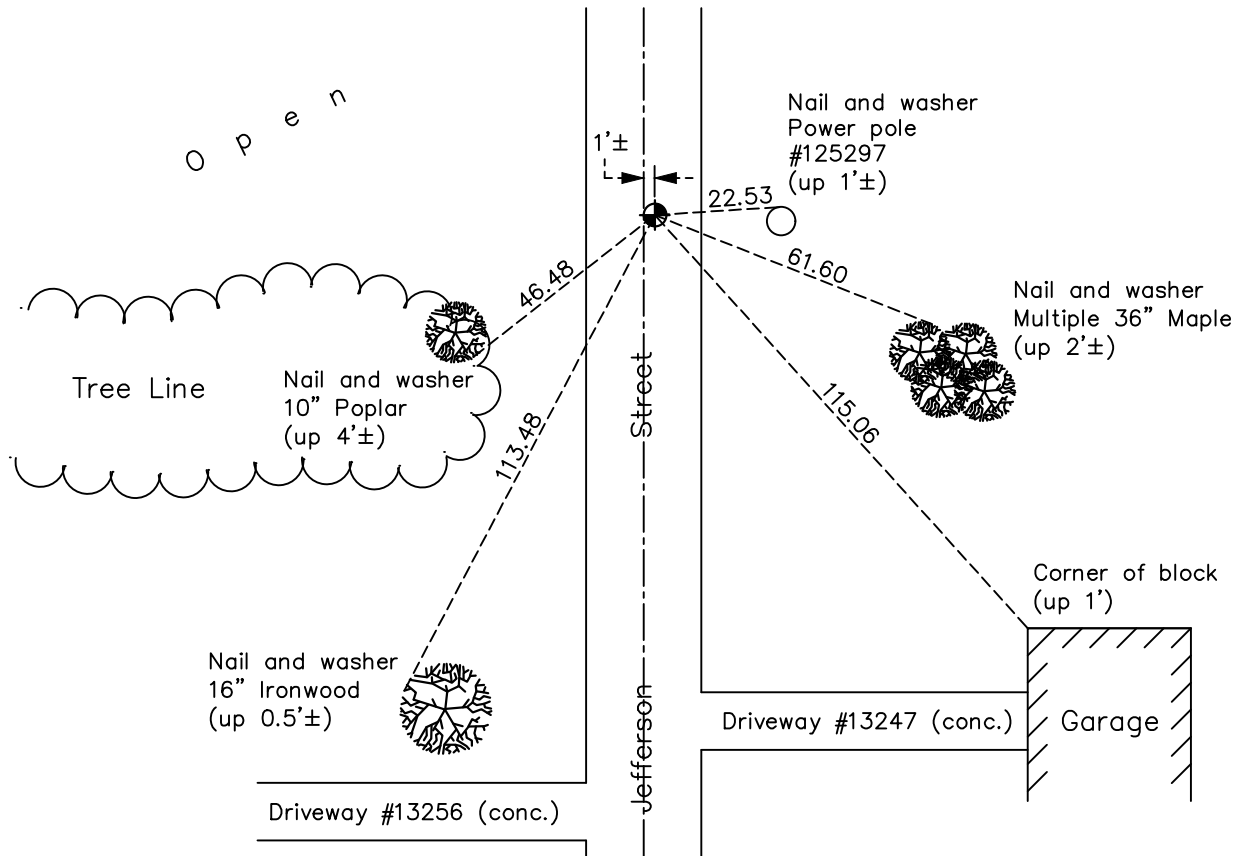
North $\frac{1}{4}$ Corner of Sec. 6 Township 31 Range 23

On the 14th day of April, 1959, the described corner was evidenced by a concrete monument

and to perpetuate the location of said corner, at the exact location thereof, a permanent marker was placed consisting of a cast iron monument

AND on the 12th day of May, 2022, said permanent marker was found flush and the ties were updated

Updated reference ties are as shown below.



Revision Date
6/10/2022

N.A.D. 1983 Coordinates
(1996 Adjustment)

County Project Coordinates	
Northing	<u>164267.8964</u>
Easting	<u>503006.1215</u>
Date	<u>10/12/98</u>

I hereby certify that this United States public land survey monument record is correct and complete to the best of my knowledge and belief.

David Zieglmeier Date 2/8/23

David Zieglmeier Anoka County Surveyor
Minnesota License Number 46179

HISTORY OF GOVERNMENT CORNER

Page No. 12

County of Anoka

State of Minnesota

North 1/4 Corner of Sec. 6 Township 31 Range 23

CORNER HISTORY:

July 2, 1945 - Found concrete monument and established ties to monument by Harvey A. Cartwright.

April 14, 1959 - Found concrete monument with top broken off and a bent iron on the north side. Replaced concrete monument base with a cast iron monument down 0.35'. Updated ties.

September 20, 1961 - Found cast iron monument down 1.5'± and updated ties

June 15, 1964 - Found cast iron monument and updated ties.

July 15, 1968 - Found cast iron monument and updated ties.

August 30, 1971 - Found cast iron monument down 1.2'± and updated ties.

December 11, 1973 - Raised cast iron monument to 0.5'± below the road surface.

May 14, 1975 - Found cast iron monument down 0.5'± and updated ties.

July 18, 1977 - Reset cast iron monument flush after sewer construction. Updated ties.

September 1, 1977 - Raised cast iron monument flush.

June 3, 1980 - Found cast iron monument and updated ties.

June 28, 1990 - Found cast iron monument and updated ties.

July 28, 1995 - Found cast iron monument and updated ties.

October 12, 1998 - Found cast iron monument, established NAD 1983 (1996 adj.) Anoka County project coordinates by static GPS methods and updated ties.

April 27, 2006 - Found cast iron monument and updated ties.

May 12, 2014 - Found cast iron monument, verified position by VRS GPS methods and updated ties.

August 24, 2018 - Found cast iron monument under blacktop in need of raising.

October 3, 2018 - Raised cast iron monument flush. Verified position by VRS GPS methods. Updated ties.

June 5, 2019 - Found cast iron monument, verified position by VRS GPS methods and updated ties.

May 12, 2022 - Found cast iron monument, verified position by VRS GPS methods and updated ties.