

# CERTIFICATE OF LOCATION OF GOVERNMENT CORNER

County of Anoka

State of Minnesota

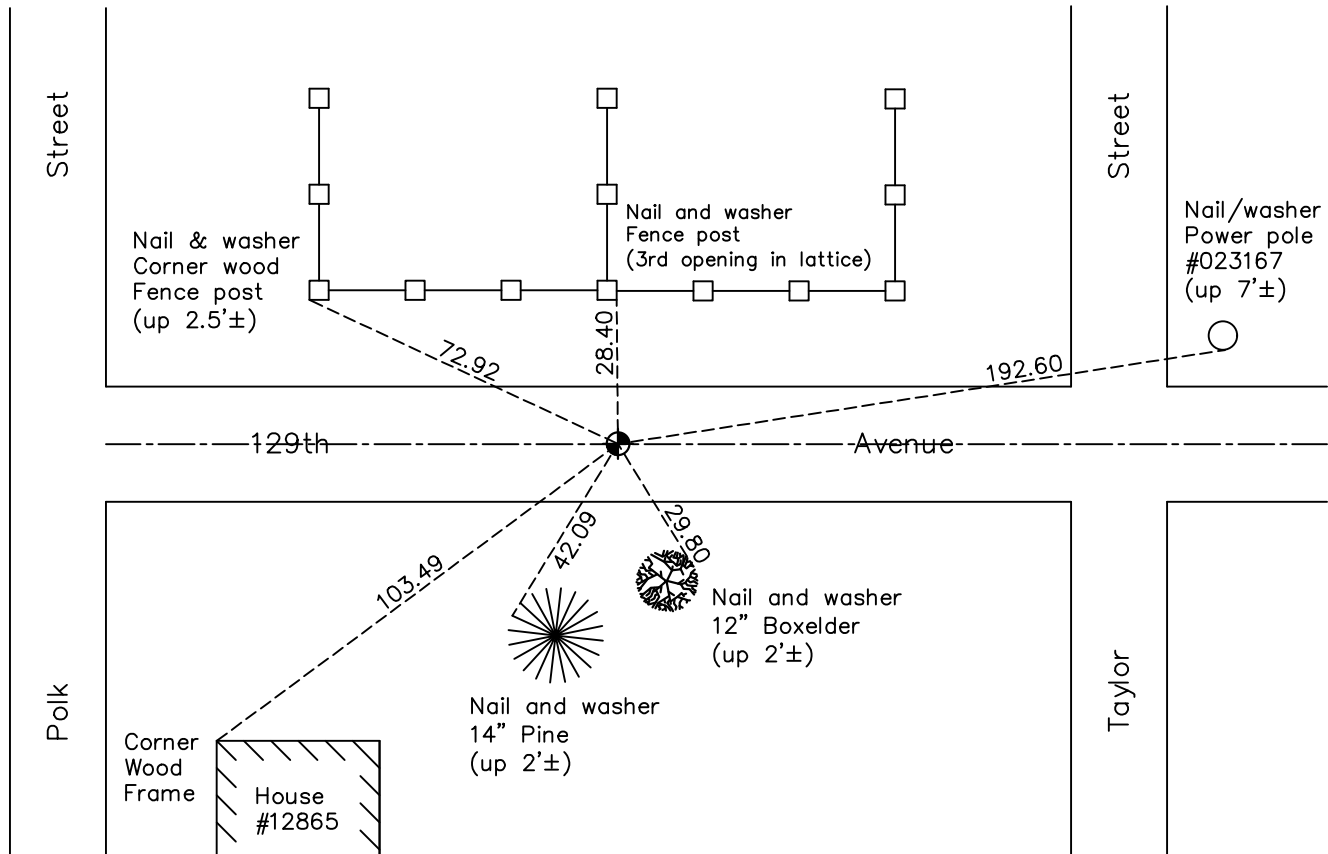
## West 1/4 Corner of Sec. 5 Township 31 Range 23

On the 17th day of July, 1968, the described corner was evidenced by a 3/4" pinched iron pipe

and to perpetuate the location of said corner, at the exact location thereof, a permanent marker was placed consisting of a cast iron monument

AND on the 19th day of May, 2022, said permanent marker was found paved over and broken down 0.8'±. Removed old CIM and reset with new CIM set flush to surface. Updated ties.

Updated reference ties are as shown below.



Revision Date  
6/10/2022

N.A.D. 1983 Coordinates  
(1996 Adjustment)

County Project Coordinates	
Northing	<u>161660.0945</u>
Easting	<u>505595.8770</u>
Date	<u>11/09/98</u>

I hereby certify that this United States public land survey monument record is correct and complete to the best of my knowledge and belief.

*David Zieglmeier* Date 2/8/23

David Zieglmeier Anoka County Surveyor  
Minnesota License Number 46179

# HISTORY OF GOVERNMENT CORNER

Page No. 13

County of Anoka

State of Minnesota

West 1/4 Corner of Sec. 5 Township 31 Range 23

## **CORNER HISTORY:**

June 1957 - Found monument and established ties to monument by Harvey A. Cartwright.

April 3, 1963 - Found pinched 3/4" iron pipe using Harvey A. Cartwright ties. Updated ties.

June 15, 1964 - Found pinched 3/4" iron pipe and updated ties.

July 17, 1968 - Found pinched 3/4" iron pipe and replaced with a cast iron monument flush. Updated ties.

August 25, 1971 - Found cast iron monument and updated ties.

May 16, 1974 - Found cast iron monument and updated ties prior to road construction. Removed monument.

June 2, 1975 - Set cast iron monument flush after road construction using corner ties.

August 9, 1977 - Found cast iron monument and updated ties.

June 3, 1980 - Found cast iron monument and updated ties.

June 28, 1990 - Found cast iron monument and updated ties.

July 28, 1995 - Found cast iron monument and updated ties.

November 9, 1998 - Found cast iron monument, established NAD 1983 (1996 adj.) Anoka County project coordinates by static GPS methods and updated ties.

May 1, 2006 - Found cast iron monument down and raised flush. Updated ties.

April 21, 2014 - Found cast iron monument, verified position by VRS GPS methods and updated ties.

June 5, 2019 - Found cast iron monument, verified position by VRS GPS methods and updated ties.

May 19th, 2022 - Found cast iron monument paved over and broken, down 0.8'±. Removed broken monument and replaced with new CIM set flush to surface. Verified position with VRS GPS method and updated ties.