

CERTIFICATE OF LOCATION OF GOVERNMENT CORNER

County of Anoka

State of Minnesota

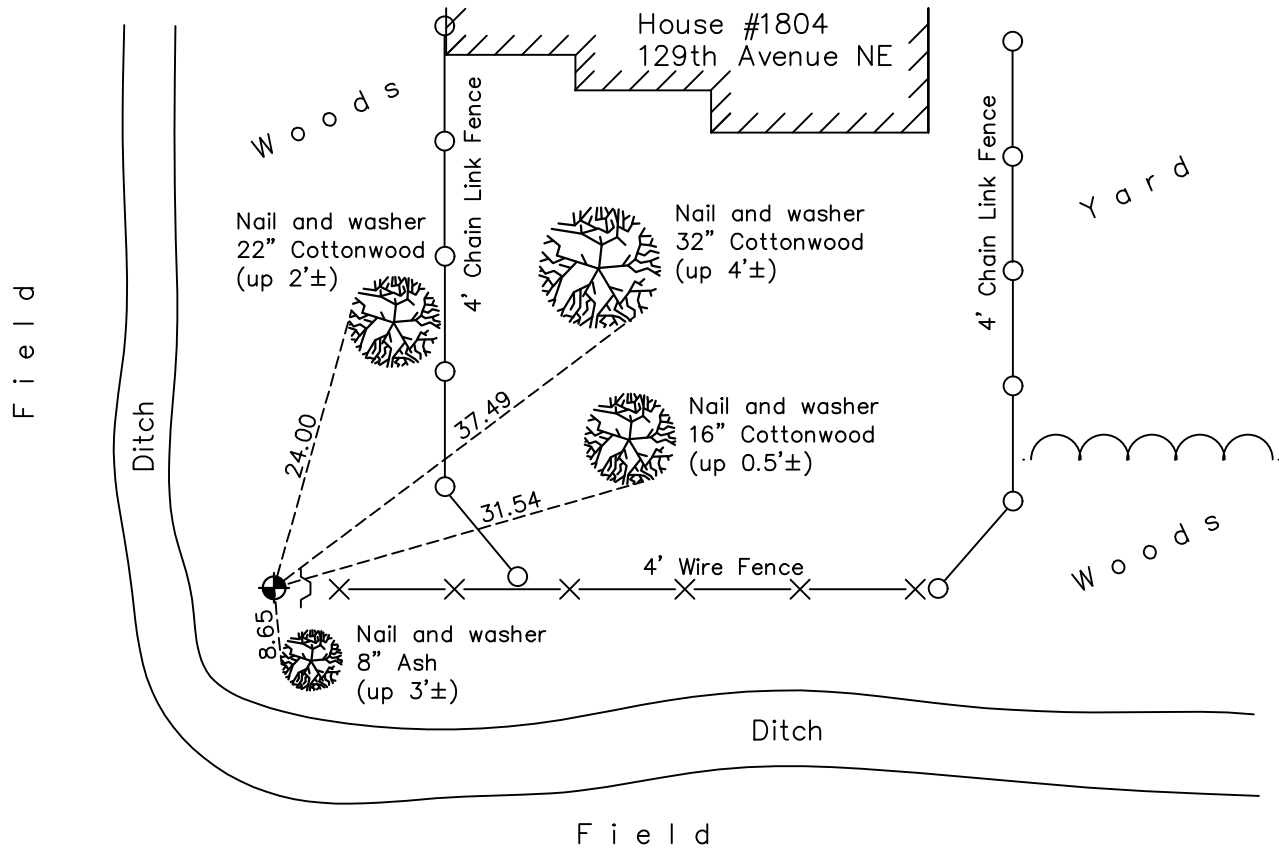
East 1/4 Corner of Sec. 5 Township 31 Range 23

On the 7th day of April, 1986, the described corner was evidenced by area resurvey

and to perpetuate the location of said corner, at the exact location thereof, a permanent marker was placed consisting of a cast iron monument with a sign and post on the east side

AND on the 4th day of May, 2022, said permanent marker was found down 1'± and the ties were updated

Updated reference ties are as shown below.



Revision Date

6/10/2022

N.A.D. 1983 Coordinates
(1996 Adjustment)

County Project Coordinates

Northing 161665.5396

Easting 510888.0280

Date 11/09/98

I hereby certify that this United States public land survey monument record is correct and complete to the best of my knowledge and belief.

David Zieglmeier Date 2/18/23

David Zieglmeier Anoka County Surveyor

Minnesota License Number 46179

HISTORY OF GOVERNMENT CORNER

Page No. 14

County of Anoka

State of Minnesota

East 1/4 Corner of Sec. 5 Township 31 Range 23

CORNER HISTORY:

July 25, 1960 - Found 2" iron pipe flush and established ties to iron pipe.

July 7, 1964 - Found 2" iron pipe and updated ties.

August 8, 1968 - Found 2" iron pipe and updated ties.

September 2, 1971 - Found 2" iron pipe and updated ties.

May 14, 1975 - Found 2" iron pipe and updated ties.

August 30, 1977 - Found 2" iron pipe and updated ties.

November 28, 1979 - Found 2" iron pipe missing. Set 1/2" iron pipe using remaining ties (2) and plat to the northwest. Position checked against area resurvey of section 4. Updated ties.

June 3, 1980 - Found 1/2" iron pipe and updated ties.

April 7, 1986 - Set cast iron monument using area resurvey and plat to the north. Updated ties.

August 6, 1990 - Found cast iron monument and updated ties.

November 9, 1998 - Found cast iron monument, established NAD 1983 (1996 adj.) Anoka County project coordinates by static GPS methods and updated ties.

May 14, 2014 - Found cast iron monument down 1'± and updated ties.

June 6, 2019 - Found cast iron monument down 1'± and updated ties.

May 4, 2022 - Found cast iron monument down 1'± and verified position by VRS GPS method. Updated ties.