

# CERTIFICATE OF LOCATION OF GOVERNMENT CORNER

County of Anoka

State of Minnesota

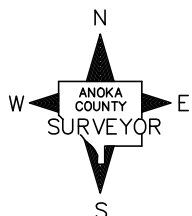
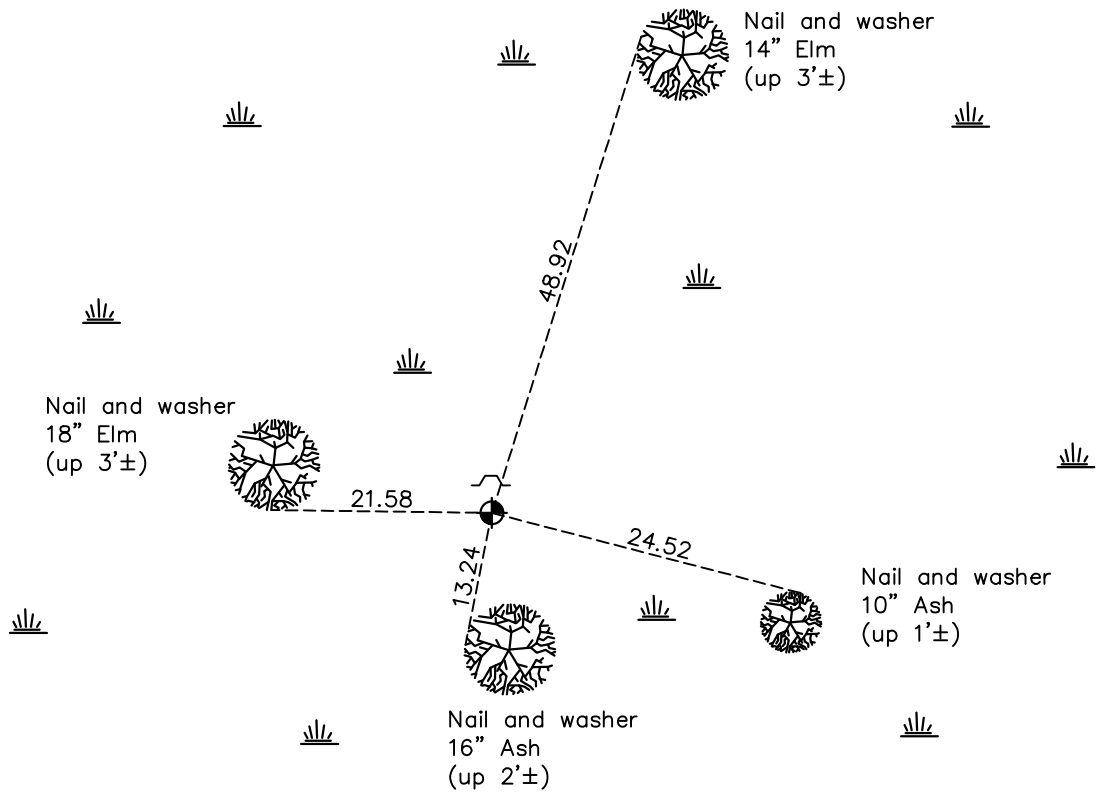
## East 1/4 Corner of Sec. 4 Township 31 Range 23

On the 11th day of March, 1980, the described corner was evidenced by an iron pipe set  
by Carley

and to perpetuate the location of said corner, at the exact location thereof, a permanent marker  
was placed consisting of a 2" square steel Telespar monument with a "County Surveyor" cap

AND on the 17th day of March, 2022, said permanent marker was found up 1'± and the  
ties were updated

Updated reference ties are as shown below.



Revision Date  
03/18/22

N.A.D. 1983 Coordinates  
 (1996 Adjustment)

County Project Coordinates	
Northing	<u>161697.7044</u>
Easting	<u>516205.2819</u>
Date	<u>11/15/99</u>

I hereby certify that this United States public land survey monument record is correct and complete to the best of my knowledge and belief.

*David Zieglmeier* Date 2/8/23

David M. Zieglmeier, Anoka County Surveyor  
 Minnesota License Number 46179

# HISTORY OF GOVERNMENT CORNER

Page No. 16

County of Anoka

State of Minnesota

East 1/4 Corner of Sec. 4 Township 31 Range 23

## **CORNER HISTORY:**

Unknown date - Found Carley Iron and established ties to iron by Harvey A. Cartwright.

April 11, 1980 - Reset corner to its original place when first found and set a cast iron monument flush. Updated ties.

November 15, 1999 - Established NAD 1983 (1996 adj.) Anoka County project coordinates by static GPS methods.

November 29, 1999 - Found cast iron monument and updated ties.

Unknown date - Missing history on switch between cast iron monument and Telspar.

August 14, 2017 - Found 2" square steel Telspar up 2'± with punchmarked cap. Verified position by VRS GPS methods and updated ties.

March 17, 2022 - Found 2" square steel Telspar up 1'± with punchmarked cap. Verified position by VRS GPS methods and updated ties.