

CERTIFICATE OF LOCATION OF GOVERNMENT CORNER

County of Anoka

State of Minnesota

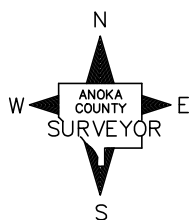
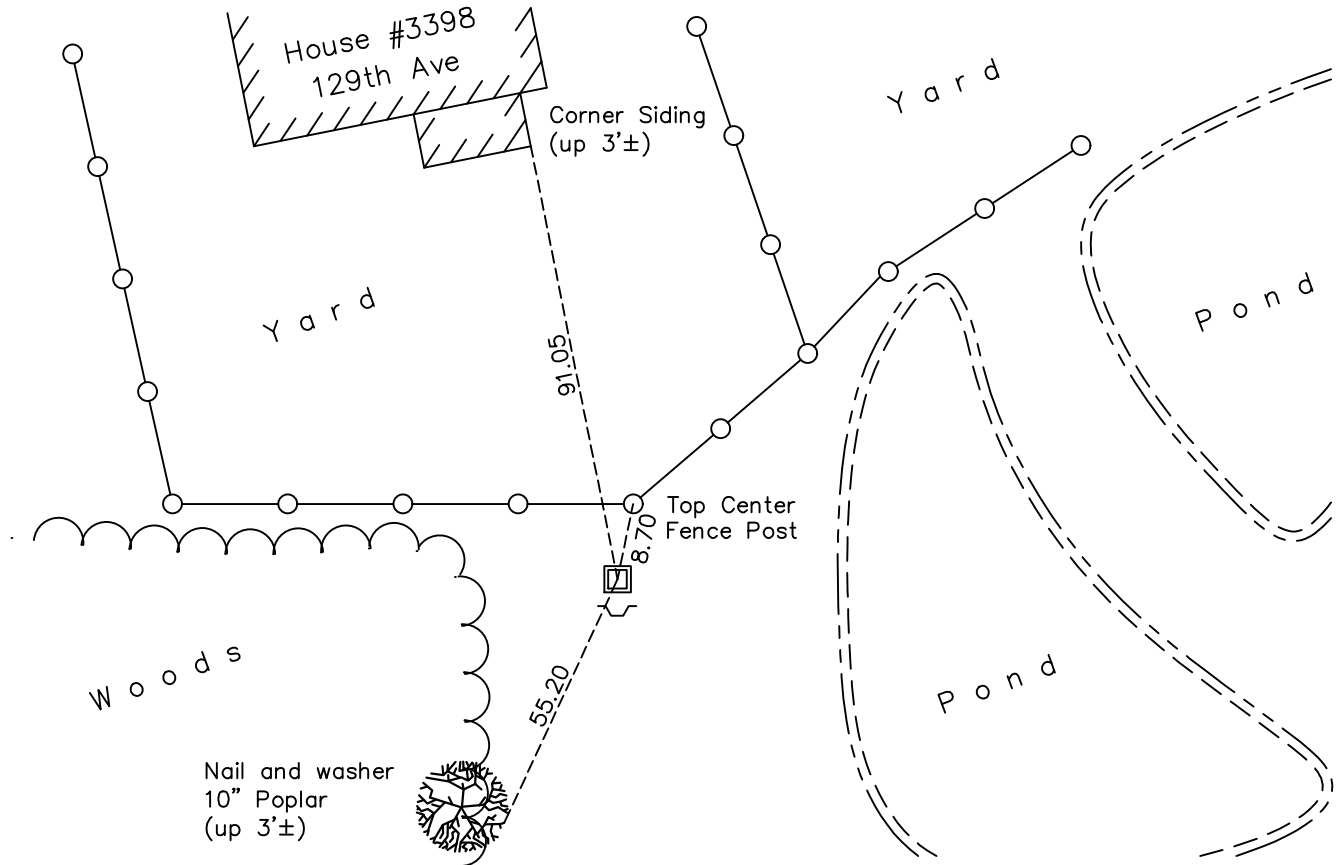
West 1/4 Corner of Sec. 2 Township 31 Range 23

On the 23rd day of March, 1971, the described corner was evidenced by a 1" iron pipe

and to perpetuate the location of said corner, at the exact location thereof, a permanent marker was placed consisting of the same 1" iron pipe with a sign and post on the south side

AND on the 29th day of April, 2022, said permanent marker was Found a 2" X 6' square steel Telspar monument w/ 'Co. Surveyor' cap & punchmark up 0.3'±. Updated ties.

Updated reference ties are as shown below.



Revision Date

6/10/2022

N.A.D. 1983 Coordinates
(1996 Adjustment)

| County Project Coordinates | |
|----------------------------|--------------------|
| Northing | <u>161562.3268</u> |
| Easting | <u>521474.2674</u> |
| Date | <u>11/12/99</u> |

I hereby certify that this United States public land survey monument record is correct and complete to the best of my knowledge and belief.

David Zieglmeier Date 2/8/23

David Zieglmeier Anoka County Surveyor
Minnesota License Number 46179

HISTORY OF GOVERNMENT CORNER

Page No. 17

County of Anoka

State of Minnesota

West 1/4 Corner of Sec. 2 Township 31 Range 23

CORNER HISTORY:

March 23, 1971 - Found 1" iron pipe and established ties to iron pipe.

August 31, 1977 - Found iron pipe and updated ties.

June 16, 1980 - Found iron pipe and updated ties.

August 7, 1990 - Found 1" iron pipe and updated ties.

November 12, 1999 - Found 1" iron pipe, established NAD 1983 (1996 adj.) Anoka County project coordinates by static GPS methods and updated ties.

May 16, 2014 - Found 1" iron pipe up 0.5'± possibly in need of a reset. Verified position by VRS GPS methods and updated ties.

June 25, 2014 - Found 1" iron pipe and verified position by static GPS methods.

July 9, 2014 - Set 2" X 6' square steel Telspar with punchmarked cap using static GPS methods. Verified position by VRS GPS methods and updated ties.

June 6, 2019 - Found 2" square steel Telspar with punchmarked cap, verified position by VRS GPS methods and updated ties.

April 29, 2022 - Found 2" square steel Telspar with punchmarked cap up 0.3'±, verified position by VRS GPS methods and updated ties.