

# CERTIFICATE OF LOCATION OF GOVERNMENT CORNER

County of Anoka

State of Minnesota

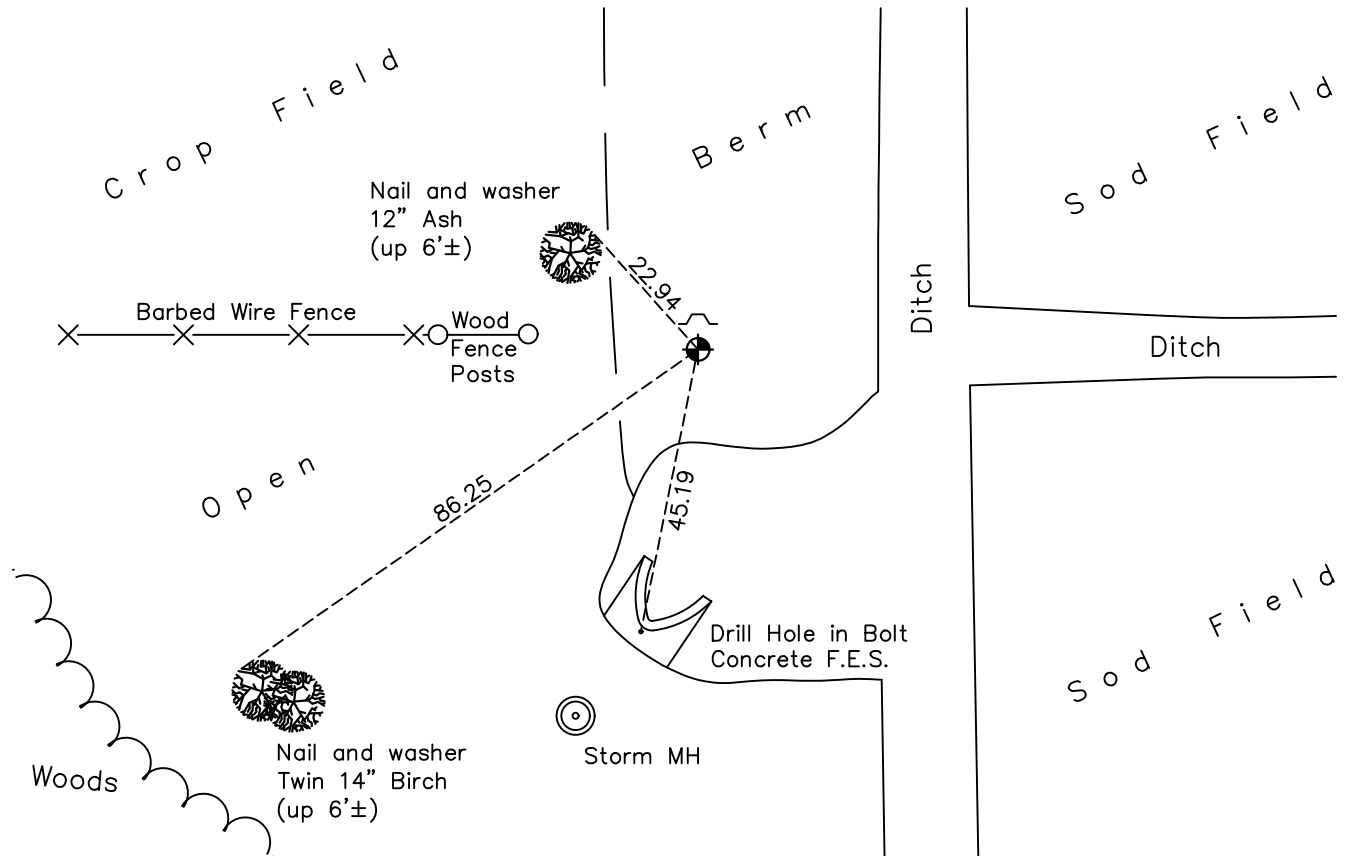
## East 1/4 Corner of Sec. 1 Township 31 Range 23

On the 17th day of May, 1974, the described corner was evidenced by area resurvey

and to perpetuate the location of said corner, at the exact location thereof, a permanent marker was placed consisting of a cast iron monument with a sign and post on the north side

AND on the 29th day of April, 2022, said permanent marker was found flush and the ties were updated

Updated reference ties are as shown below.



Revision Date  
6/10/2022

N.A.D. 1983 Coordinates  
(1996 Adjustment)

County Project Coordinates	
Northing	<u>161424.1640</u>
Easting	<u>531998.2926</u>
Date	<u>10/09/98</u>

I hereby certify that this United States public land survey monument record is correct and complete to the best of my knowledge and belief.

*David Zieglmeier* Date 2/8/23

David Zieglmeier Anoka County Surveyor  
Minnesota License Number 46179

# HISTORY OF GOVERNMENT CORNER

County of Anoka

State of Minnesota

East 1/4 Corner of Sec. 1 Township 31 Range 23

## **CORNER HISTORY:**

May 17, 1974 - Set cast iron monument flush using area resurvey and established ties to monument.

May 19, 1975 - Found cast iron monument and updated ties.

September 2, 1977 - Found cast iron monument and updated ties.

June 17, 1980 - Found cast iron monument and updated ties.

June 12, 1986 - Found cast iron monument and updated ties.

August 7, 1990 - Found cast iron monument and updated ties.

May 1, 1992 - Found cast iron monument and updated ties.

July 24, 1995 - Found cast iron monument and updated ties.

October 9, 1998 - Found cast iron monument, established NAD 1983 (1996 adj.) Anoka County project coordinates by static GPS methods and updated ties.

June 30, 2014 - Found cast iron monument and updated ties.

July 30, 2019 - Found cast iron monument and updated ties.

April 29, 2022 - Found cast iron monument and verified position by VRS GPS method. Updated ties.