

CERTIFICATE OF LOCATION OF GOVERNMENT CORNER

County of Anoka

State of Minnesota

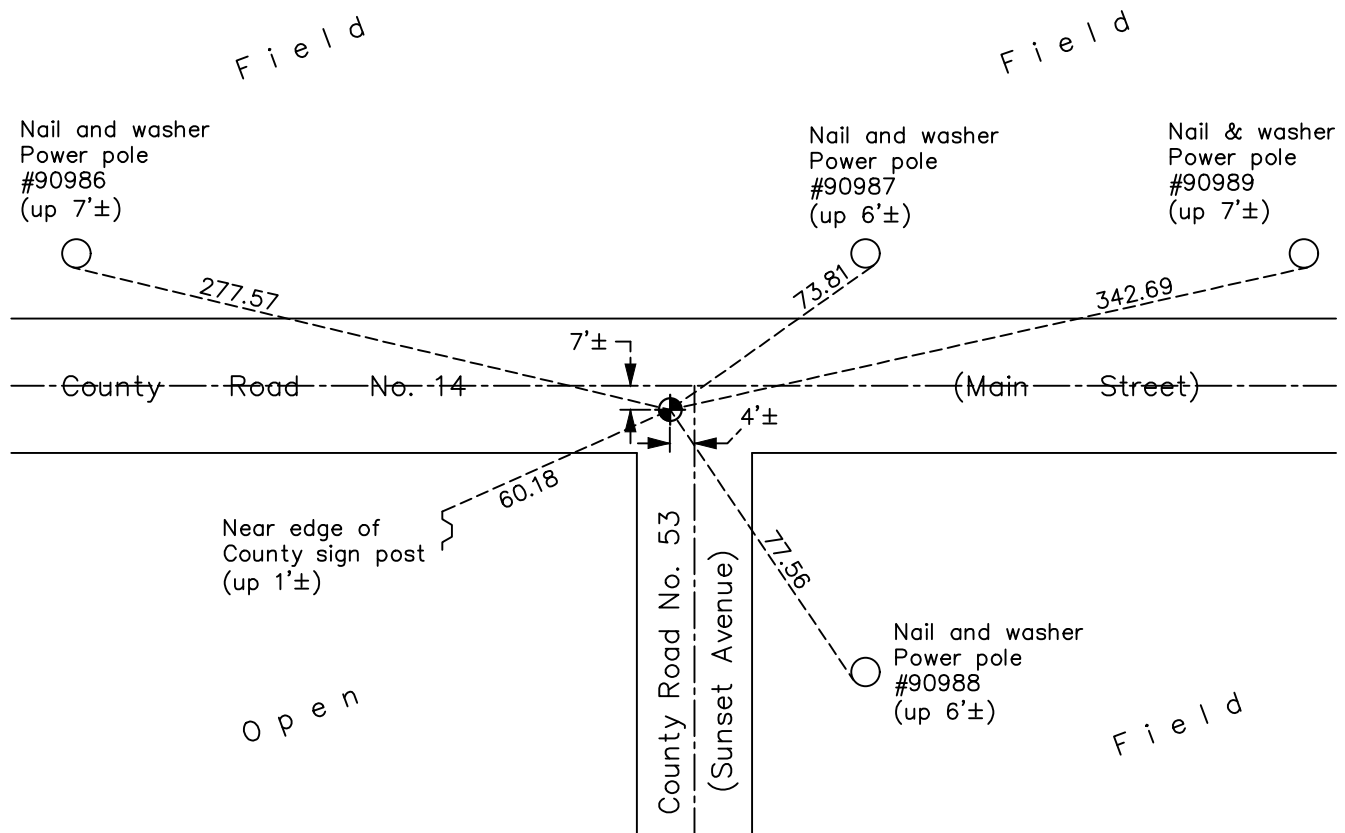
Southeast Corner of Sec. 1 Township 31 Range 23

On the 4th day of October, 1961, the described corner was evidenced by area resurvey

and to perpetuate the location of said corner, at the exact location thereof, a permanent marker was placed consisting of a cast iron monument

AND on the 23rd day of May, 2022, said permanent marker was found flush and the ties were updated

Updated reference ties are as shown below.



Revision Date
6/10/2022

N.A.D. 1983 Coordinates
 (1996 Adjustment)

County Project Coordinates	
Northing	<u>158751.6721</u>
Easting	<u>531996.6486</u>
Date	<u>6/11/98</u>

I hereby certify that this United States public land survey monument record is correct and complete to the best of my knowledge and belief.

David Zieglmeier Date 2/8/23

David M. Zieglmeier, Anoka County Surveyor
 Minnesota License Number 46179

HISTORY OF GOVERNMENT CORNER

Page No. 20

County of Anoka

State of Minnesota

Southeast Corner of Sec. 1 Township 31 Range 23

CORNER HISTORY:

October 4, 1961 - Set cast iron monument flush using area resurvey. Established ties to monument.

June 9, 1964 - Found cast iron monument and updated ties.

July 15, 1968 - Found cast iron monument and updated ties.

August 24, 1971 - Found cast iron monument and updated ties.

May 22, 1975 - Found cast iron monument and updated ties.

August 10, 1977 - Found cast iron monument and updated ties.

December 26, 1980 - Found cast iron monument and updated ties.

June 3, 1986 - Found cast iron monument and updated ties.

June 20, 1990 - Found cast iron monument and updated ties.

June 27, 1994 - Found cast iron monument and set construction ties prior to road construction.

July 21, 1995 - Found cast iron monument after road construction and updated ties.

June 11, 1998 - Found cast iron monument and updated ties. Established NAD 1983 (1996 adj.) Anoka County project coordinates by static GPS methods.

June 7, 2006 - Found cast iron monument and updated ties.

June 2, 2014 - Found cast iron monument. Verified position by VRS GPS methods. Updated ties.

June 18, 2019 - Found cast iron monument missing. Set temporary P.K. nail.

April 2, 2020 - Reset with a 6" cast iron monument flush after road construction using static GPS methods. Verified position by VRS GPS methods. Updated ties.

May 23, 2022 - Found cast iron monument. Verified position by VRS GPS methods. Updated ties.