

# CERTIFICATE OF LOCATION OF GOVERNMENT CORNER

County of Anoka

State of Minnesota

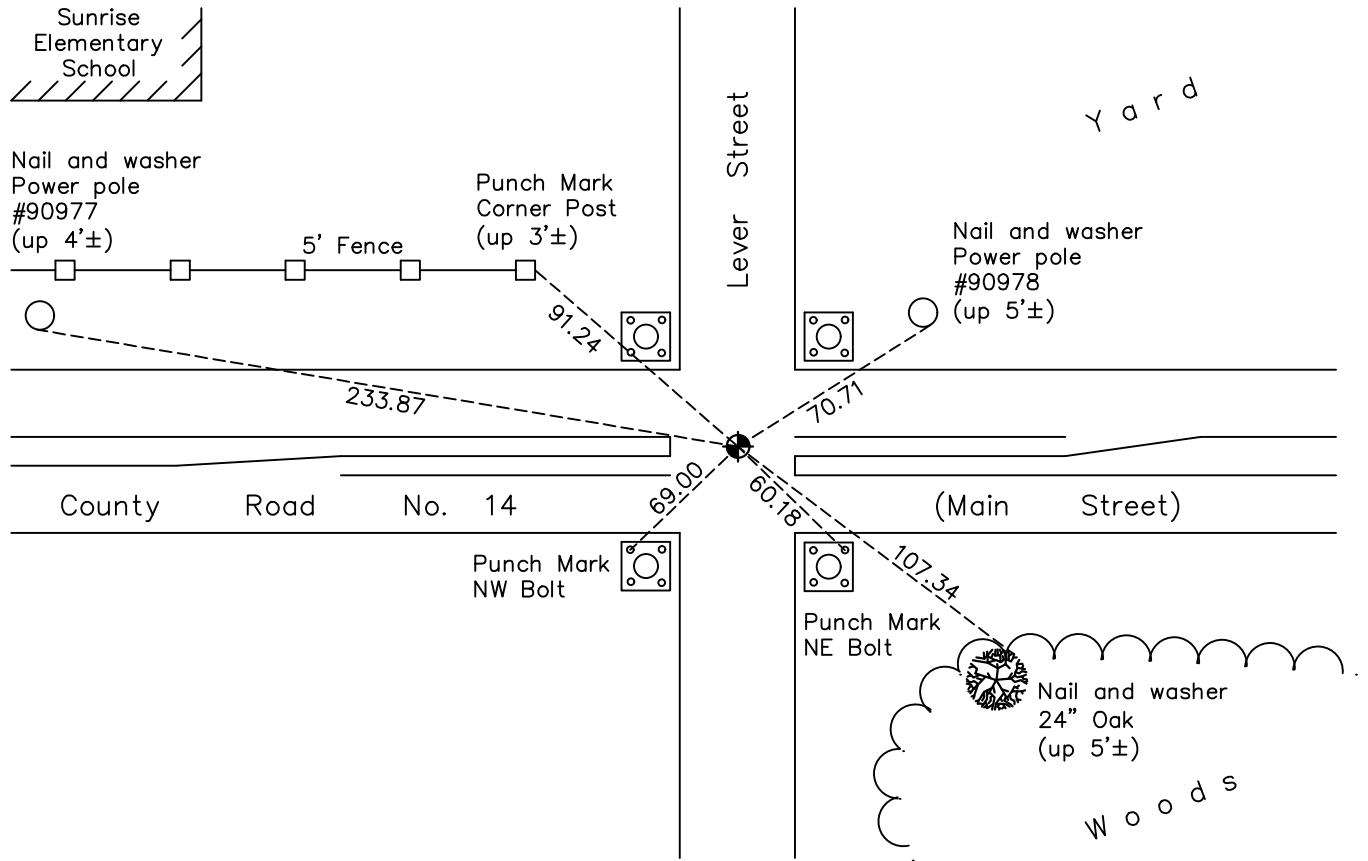
## North $\frac{1}{4}$ Corner of Sec. 12 Township 31 Range 23

On the 20th day of November, 1964, the described corner was evidenced by area resurvey

and to perpetuate the location of said corner, at the exact location thereof, a permanent marker was placed consisting of a cast iron monument

AND on the 4th day of May, 2022, said permanent marker was found flush and the ties were updated

Updated reference ties are as shown below.



N.A.D. 1983 Coordinates  
(1996 Adjustment)

County Project Coordinates	
Northing	<u>158802.3656</u>
Easting	<u>529393.6785</u>
Date	<u>9/02/98</u>

Revision Date  
6/10/2022

I hereby certify that this United States public land survey monument record is correct and complete to the best of my knowledge and belief.

*David Zieglermeier* Date 2/8/23

David M. Zieglermeier, Anoka County Surveyor  
 Minnesota License Number 46179

# HISTORY OF GOVERNMENT CORNER

Page No. 21

County of Anoka

State of Minnesota

## North 1/4 Corner of Sec. 12 Township 31 Range 23

### **CORNER HISTORY:**

November 20, 1964 - Set cast iron monument flush using area resurvey and established ties to monument.

July 15, 1968 - Found cast iron monument and updated ties.

August 24, 1971 - Found cast iron monument and updated ties.

May 22, 1975 - Found cast iron monument and updated ties.

August 10, 1977 - Found cast iron monument and updated ties.

May 29, 1980 - Found cast iron monument and updated ties.

June 10, 1986 - Found cast iron monument and updated ties.

August 7, 1990 - Found cast iron monument and updated ties.

June 27, 1994 - Found cast iron monument and set construction ties prior to road construction.

July 21, 1995 - Set cast iron monument flush after construction and updated ties.

September 2, 1998 - Established NAD 1983 (1996 adj.) Anoka County project coordinates by static GPS methods.

September 3, 1998 - Found cast iron monument and updated ties.

August 21, 2006 - Found cast iron monument and updated ties.

June 2, 2014 - Found cast iron monument. Verified position by VRS GPS methods. Updated ties.

July 26, 2019 - Set construction ties and removed cast iron monument prior to road construction.

April 2, 2020 - Reset 3/4 length partial cast iron monument flush after road construction using static GPS methods. Updated ties.

May 4, 2022 - Found cast iron monument. Verified position by VRS GPS methods. Updated ties.