

# CERTIFICATE OF LOCATION OF GOVERNMENT CORNER

County of Anoka

State of Minnesota

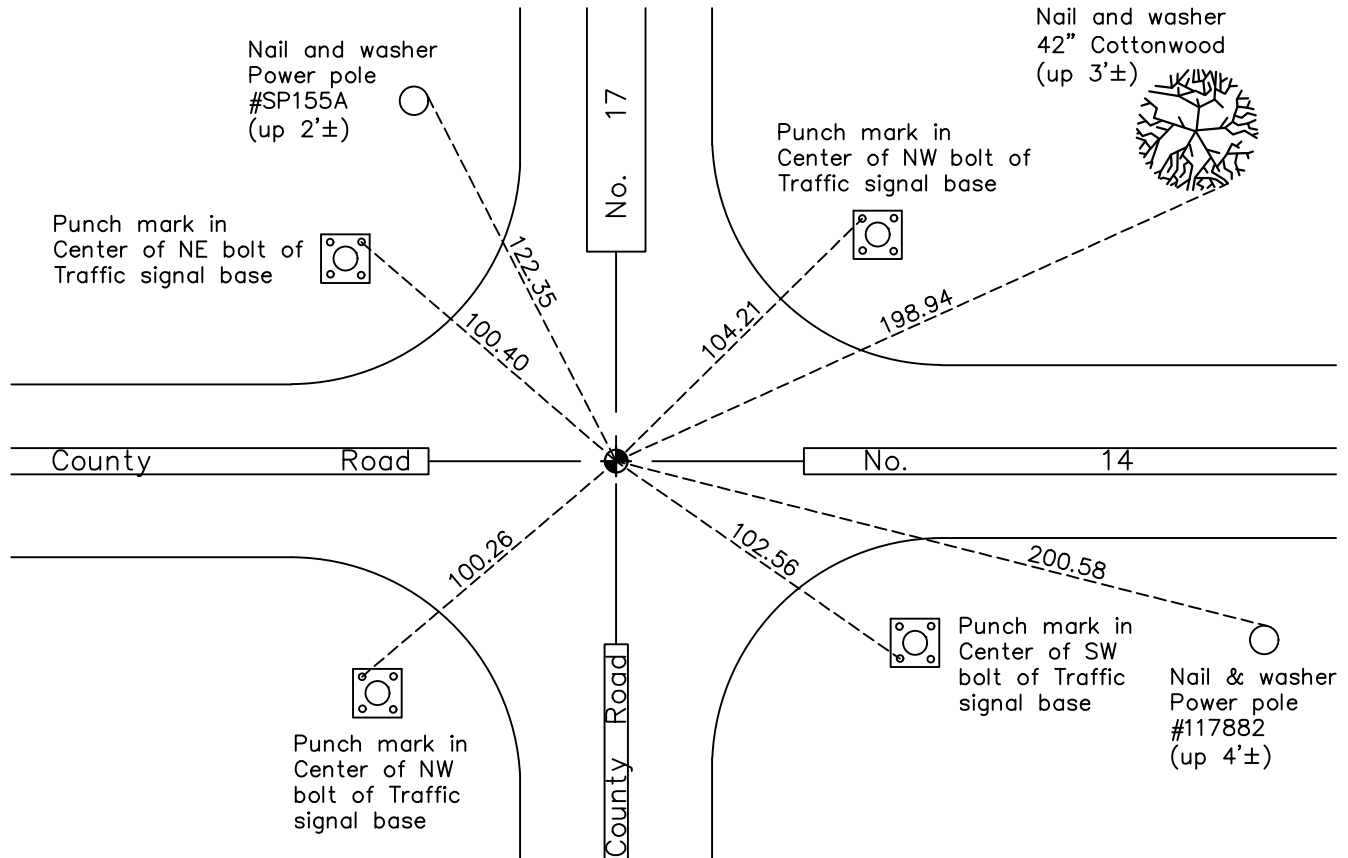
## Southwest Corner of Sec. 1 Township 31 Range 23

On the 1st day of September, 1960, the described corner was evidenced by a concrete monument

and to perpetuate the location of said corner, at the exact location thereof, a permanent marker was placed consisting of a cast iron monument

AND on the 4th day of May, 2022, said permanent marker was found and the ties were updated

Updated reference ties are as shown below.



N.A.D. 1983 Coordinates  
(1996 Adjustment)

County Project Coordinates	
Northing	<u>158853.9336</u>
Easting	<u>526762.8584</u>
Date	<u>9/02/98</u>

Revision Date  
07/13/2022

I hereby certify that this United States public land survey monument record is correct and complete to the best of my knowledge and belief.

*David Zieglmeier* Date 2/8/23

David Zieglmeier Anoka County Surveyor  
Minnesota License Number 46179

# HISTORY OF GOVERNMENT CORNER

Page No. 22

County of Anoka

State of Minnesota

## Southwest Corner of Sec. 1 Township 31 Range 23

### **CORNER HISTORY:**

April 20, 1943 - Found concrete monument down 5" in road and established ties to monument by Harvey a Cartwright.

November 17, 1955 - Found concrete monument and updated ties.

September 1, 1960 - Found concrete monument down 0.7' and updated ties.

July 6, 1964 - Found concrete monument and updated ties.

July 16 , 1968 - Found concrete monument and updated ties.

August 10, 1970 - Set a short cast iron monument flush with the road on top of broken concrete monument. Updated ties.

August 24, 1971 - Found cast iron monument and updated ties.

May 22, 1975 - Found cast iron monument and updated ties.

August 10, 1977 - Found cast iron monument and updated ties.

May 29, 1980 - Found cast iron monument and updated ties.

April 19, 1993 - Found cast iron monument and updated ties prior to road construction.

July 12, 1993 - Set cast iron monument flush after road construction and updated ties.

July 13, 1995 - Found cast iron monument and updated ties.

September 2, 1998 - Found cast iron monument, established NAD 1983 (1996 adj.) Anoka County project coordinates by static GPS methods and updated ties.

October 17, 2005 - Found cast iron monument and updated ties.

June 2, 2014 - Found cast iron monument, verified position by VRS GPS methods and updated ties.

July 29, 2019 - Found cast iron monument and updated ties.

May 4, 2022 - Found cast iron monument flush, verified position by VRS GPS methods and updated ties.