

CERTIFICATE OF LOCATION OF GOVERNMENT CORNER

County of Anoka

State of Minnesota

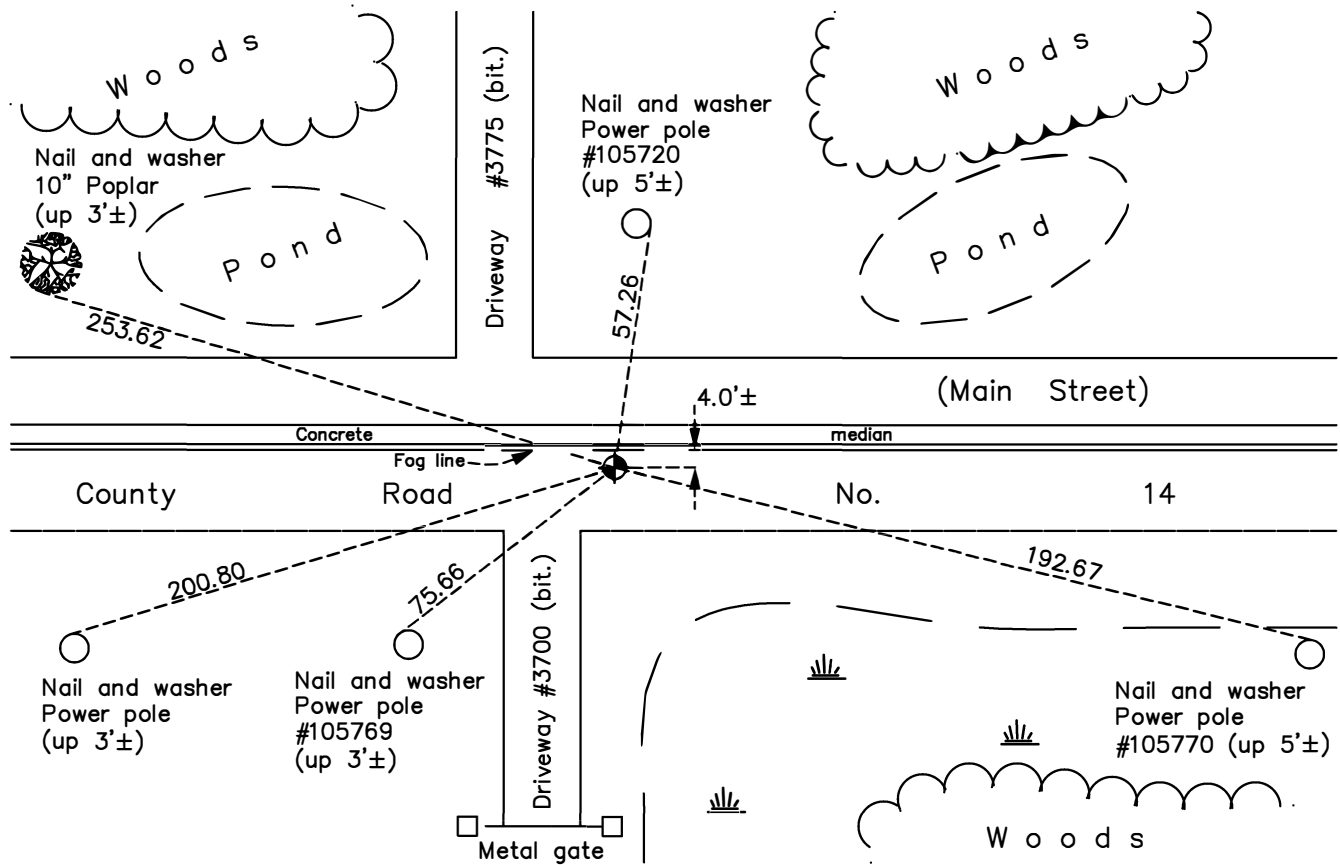
North 1/4 Corner of Sec. 11 Township 31 Range 23

On the 18th day of November, 1964, the described corner was evidenced by area resurvey

and to perpetuate the location of said corner, at the exact location thereof, a permanent marker was placed consisting of a cast iron monument

AND on the 24th day of May, 2023, said permanent marker was Set cast iron monument after road construction, verified using RTK GPS methods. Updated ties.

Updated reference ties are as shown below.



N
W ANOKA COUNTY SURVEYOR E
S

Revision Date
5 / 31 / 23

N.A.D. 1983 Coordinates
(1996 Adjustment)

County Project Coordinates	
Northing	<u>158894.1462</u>
Easting	<u>524127.0898</u>
Date	<u>9/02/98</u>

I hereby certify that this United States public land survey monument record is correct and complete to the best of my knowledge and belief.

David Zieglmeier Date 6/28/23

David Zieglmeier Anoka County Surveyor
Minnesota License Number 46179

HISTORY OF GOVERNMENT CORNER

Page No. 23

County of Anoka

State of Minnesota

North 1/4 Corner of Sec. 11 Township 31 Range 23

CORNER HISTORY:

September 3, 1948 - Found concrete monument and established ties to monument.

March 7, 1962 - Found concrete down 2.5' in road with all corner ties gone.

November 18, 1964 - Set cast iron monument flush using area resurvey and updated ties.

July 16, 1968 - Found cast iron monument and updated ties.

August 24, 1971 - Found cast iron monument and updated ties.

May 22, 1975 - Found cast iron monument and updated ties.

June 5, 1980 - Found cast iron monument and updated ties.

August 7, 1990 - Found cast iron monument and updated ties.

September 1, 1992 - Found cast iron monument and set construction ties prior to road construction.

July 12, 1993 - Set cast iron monument flush after road construction and updated ties

August 2, 1995 - Found cast iron monument and updated ties.

September 2, 1998 - Found cast iron monument, established NAD 1983 (1996 adj.) Anoka County project coordinates by static GPS methods and updated ties.

August 26, 2006 - Found cast iron monument and updated ties.

July 13, 2010 - Found cast iron monument down after road overlay. Raised flush and updated ties.

June 2, 2014 - Found cast iron monument, verified position by VRS GPS methods and updated ties.

June 6, 2019 - Found cast iron monument, verified position by VRS GPS methods and updated ties.

May 24, 2023 - Set cast iron monument after road construction, verified position using RTK GPS methods. Updated ties. Job no. 22-131