

# CERTIFICATE OF LOCATION OF GOVERNMENT CORNER

County of Anoka

State of Minnesota

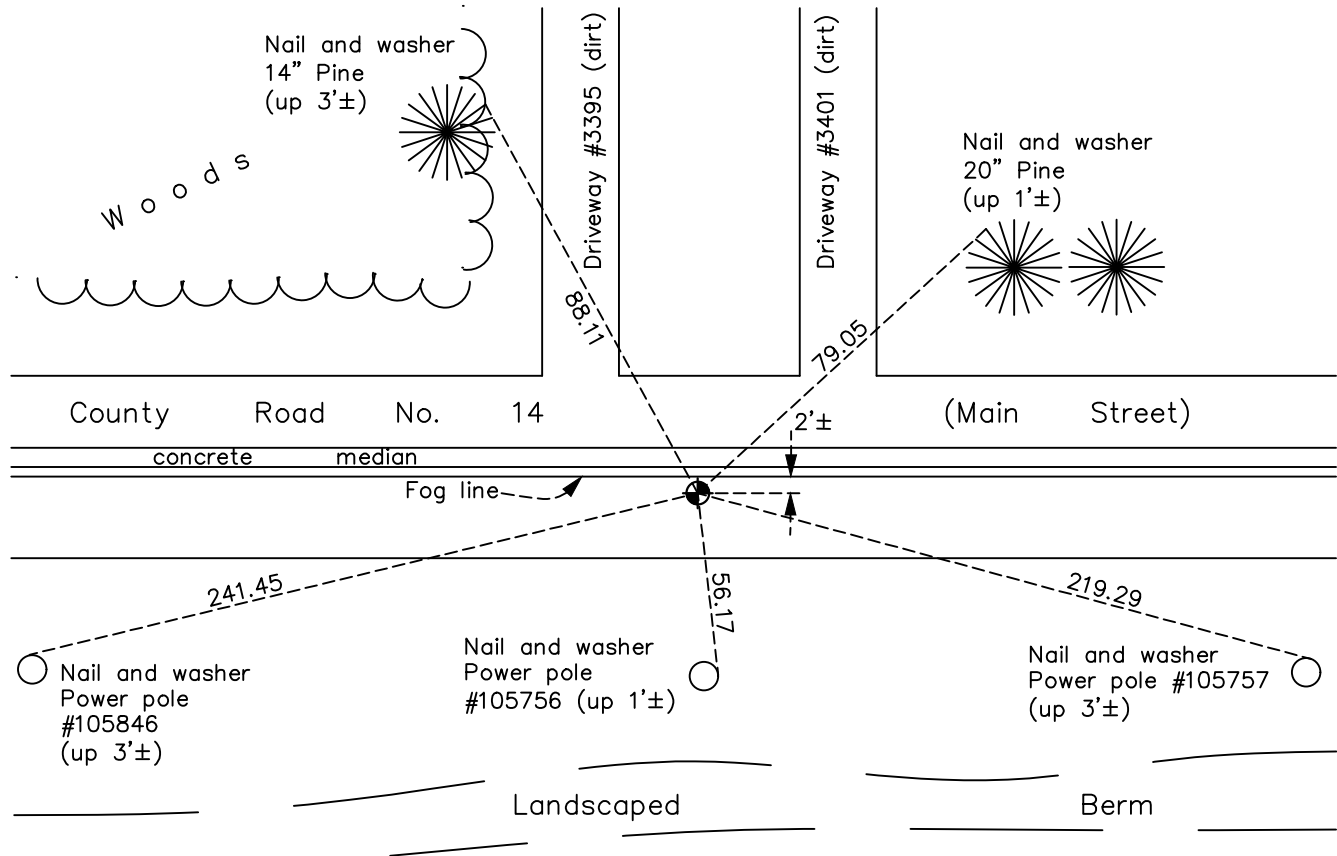
## Southeast Corner of Sec. 3 Township 31 Range 23

On the 7th day of March, 1962, the described corner was evidenced by a concrete monument

and to perpetuate the location of said corner, at the exact location thereof, a permanent marker was placed consisting of a cast iron monument

AND on the 23rd day of May, 2023, said permanent marker was Set cast iron monument after road construction, verified position using RTK GPS methods. Updated ties.

Updated reference ties are as shown below.



Revision Date  
 5/31/2023

N.A.D. 1983 Coordinates  
 (1996 Adjustment)

| County Project Coordinates |             |
|----------------------------|-------------|
| Northing                   | 158934.3738 |
| Easting                    | 521489.1999 |
| Date                       | 9/02/98     |

I hereby certify that this United States public land survey monument record is correct and complete to the best of my knowledge and belief.  
*David Zieglmeier* Date 6/28/23  
 David Zieglmeier Anoka County Surveyor  
 Minnesota License Number 46179

# HISTORY OF GOVERNMENT CORNER

Page No. 24

County of Anoka

State of Minnesota

## Southeast Corner of Sec. 3 Township 31 Range 23

### **CORNER HISTORY:**

September 3, 1948 - Found concrete monument and established ties to monument by Harvey A. Cartwright.

March 7, 1962 - Found concrete monument with the top broken off and down 1'. Updated ties.

July 6, 1964 - Found concrete monument and updated ties.

July 16, 1968 - Found concrete monument and updated ties.

August 10, 1970 - Set short cast iron monument flush with road on top of broken concrete monument. Updated ties.

August 24, 1971 - Found cast iron monument and updated ties.

May 22, 1975 - Found cast iron monument and updated ties.

August 10, 1977 - Found cast iron monument and updated ties.

June 5, 1980 - Found cast iron monument and updated ties.

September 1, 1992 - Found cast iron monument and updated ties prior to road construction.

July 12, 1993 - Set cast iron monument flush after road construction and updated ties.

August 2, 1995 - Found cast iron monument and updated ties.

September 2, 1998 - Found cast iron monument, established NAD 1983 (1996 adj.) Anoka County project coordinates by static GPS methods and updated ties.

July 7, 2000 - Found cast iron monument and updated ties.

May 11, 2006 - Found cast iron monument and updated ties.

July 13, 2010 - Found cast iron monument down after road overlay. Raised flush and updated ties.

June 4, 2014 - Found cast iron monument, verified position by VRS GPS methods and updated ties.

June 6, 2019 - Found cast iron monument, verified position by VRS GPS methods and updated ties.

May 23, 2023 - Set cast iron monument after road construction, verified position RTK GPS method. Updated ties. Job no. 22-131