

CERTIFICATE OF LOCATION OF GOVERNMENT CORNER

County of Anoka

State of Minnesota

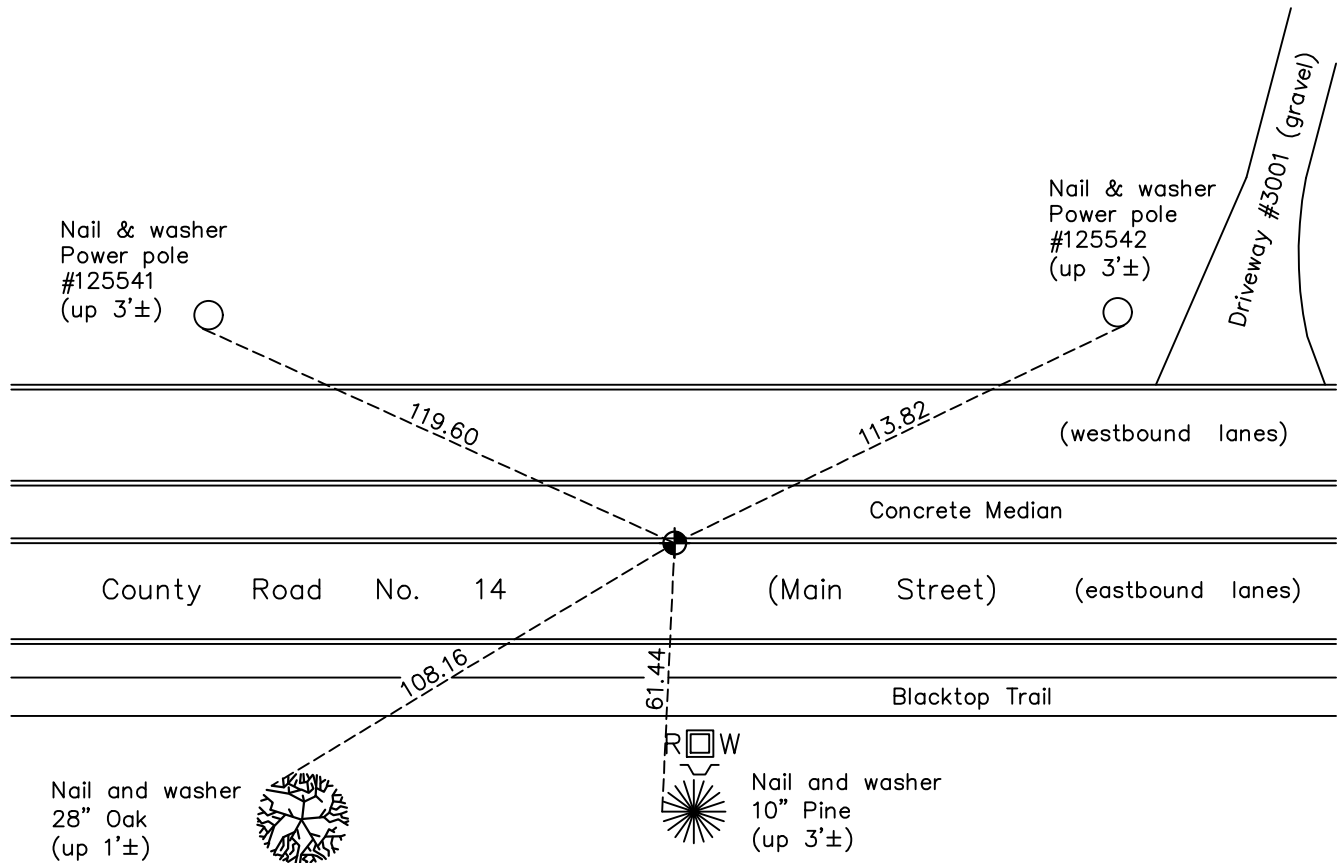
North 1/4 Corner of Sec. 10 Township 31 Range 23

On the 20th day of November, 1964, the described corner was evidenced by area resurvey

and to perpetuate the location of said corner, at the exact location thereof, a permanent marker was placed consisting of a slim cast iron monument

AND on the 30th day of December, 2022, said permanent marker was found flush in concrete curb and the ties were updated

Updated reference ties are as shown below.



Revision Date
1/03/2023

N.A.D. 1983 Coordinates
 (1996 Adjustment)

County Project Coordinates	
Northing	<u>158978.4089</u>
Easting	<u>518845.0189</u>
Date	<u>9/03/98</u>

I hereby certify that this United States public land survey monument record is correct and complete to the best of my knowledge and belief.

David Zieglmeier Date 2/8/23

David Zieglmeier Anoka County Surveyor
 Minnesota License Number 46179

HISTORY OF GOVERNMENT CORNER

Page No. 25

County of Anoka

State of Minnesota

North 1/4 Corner of Sec. 10 Township 31 Range 23

CORNER HISTORY:

Unknown date - Found monument and established ties to monument by Anoka County highway department.

November, 20 1964 - Set cast iron monument flush using area resurvey and established ties to monument.

July 16, 1968 - Found cast iron monument and updated ties.

August 27, 1971 - Found cast iron monument and updated ties.

May 22, 1975 - Found cast iron monument and updated ties.

August 10, 1977 - Found cast iron monument and updated ties.

June 5, 1980 - Found cast iron monument and updated ties.

August 7, 1990 - Found cast iron monument and updated ties.

September 1, 1992 - Found cast iron monument and updated ties prior to road construction.

July 12, 1993 - Set cast iron monument flush after road construction and updated ties.

August 2, 1995 - Found cast iron monument and updated ties.

September 3, 1998 - Found cast iron monument, established NAD 1983 (1996 adj.) Anoka County project coordinates by static GPS methods and updated ties.

May 11, 2006 - Found cast iron monument and updated ties.

July 13, 2010 - Found cast iron monument down after road overlay. Raised flush and updated ties.

June 4, 2014 - Found cast iron monument, verified position by VRS GPS methods and updated ties.

March 23, 2016 - Found cast iron monument, verified position by VRS GPS methods and updated ties.

November 14, 2016 - Set cast iron monument after construction using static GPS methods and updated ties.

June 6, 2019 - Found cast iron monument, verified position by VRS GPS methods and updated ties.

December 30, 2022 - Found cast iron monument flush, verified position by RTK GPS method and updated ties.