

# CERTIFICATE OF LOCATION OF GOVERNMENT CORNER

County of Anoka

State of Minnesota

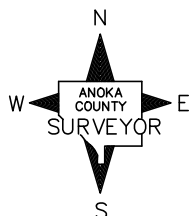
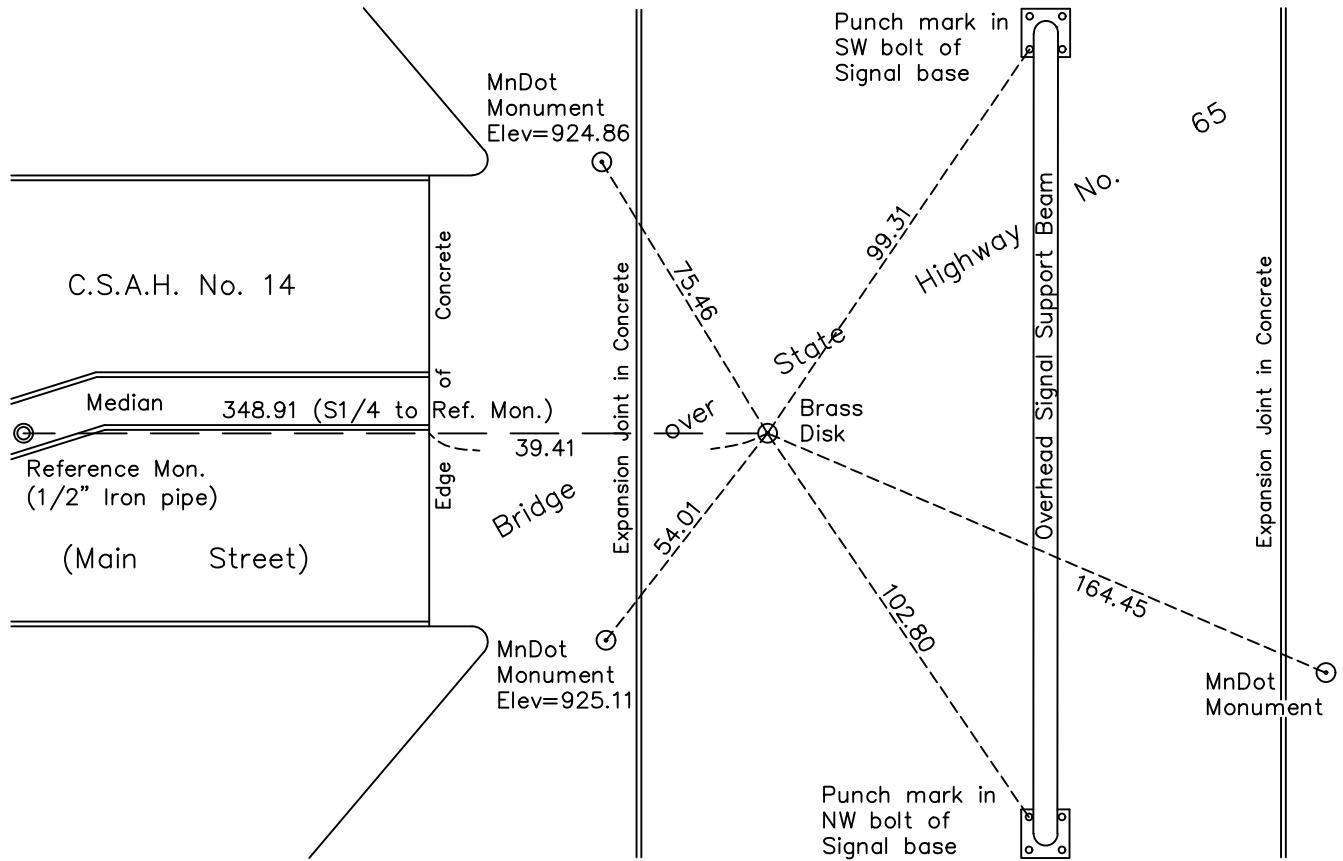
## South 1/4 Corner of Sec. 5 Township 31 Range 23

On the 17 day of April, 2008, the described corner was evidenced by a broken cast iron monument

and to perpetuate the location of said corner, at the exact location thereof, a permanent marker was placed consisting of a brass disk set flush in concrete bridge deck

AND on the 5th day of June, 2014, said permanent marker was found and the ties were updated

Updated reference ties are as shown below.



Revision Date  
 6/16/2023

N.A.D. 1983 Coordinates  
 (1996 Adjustment)

County Project Coordinates	
Northing	<u>159046.4624</u>
Easting	<u>508208.2586</u>
Date	<u>4/17/2008</u>

I hereby certify that this United States public land survey monument record is correct and complete to the best of my knowledge and belief.

\_\_\_\_\_ Date \_\_\_\_\_

David M. Zieglmeier, Anoka County Surveyor

Minnesota License Number 46179

# REFERENCE MONUMENT FOR GOVERNMENT CORNER

Reference to County of Anoka State of Minnesota

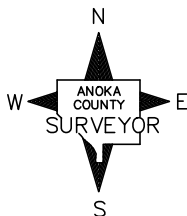
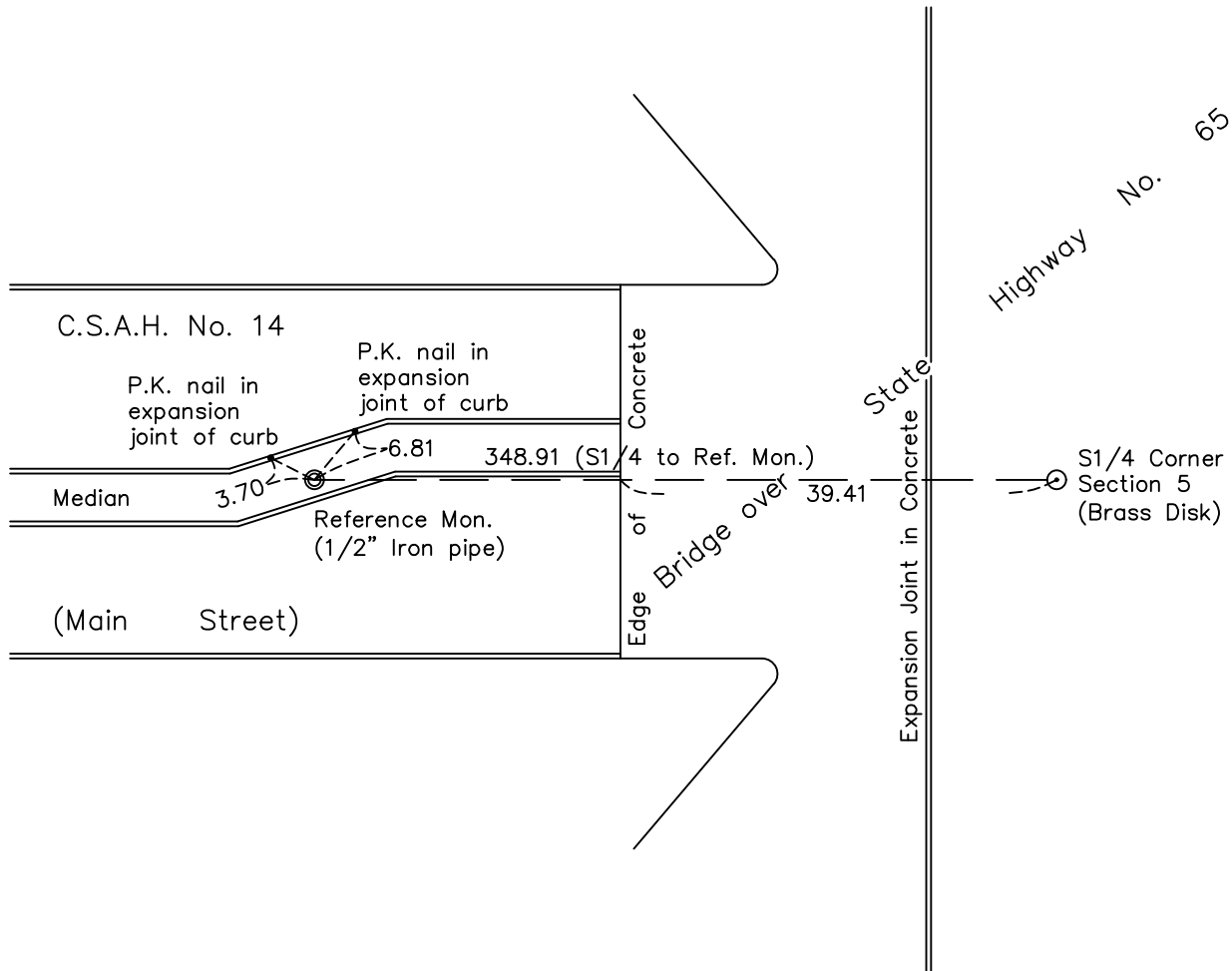
## South 1/4 Corner of Sec. 5 Township 31 Range 23

On the 19th day of June, 2019, the described reference monument was evidenced by a 1/2" iron pipe flush in concrete median

and to reference the location of said corner, at the exact location thereof, a permanent marker was placed consisting of the same 1/2" iron pipe flush in concrete median

AND on the 12th day of May, 2022, said permanent marker was found flush. Verified position by VRS GPS methods and updated ties.

Updated reference ties are as shown below.



Revision Date  
 6/16/2023

**REFERENCE MONUMENT**  
 N.A.D. 1983 (1996 Adj.)

County Project Coordinates	
Northing	159043.1337
Easting	507859.3979
Date	6/2/2009

# HISTORY OF GOVERNMENT CORNER

Page No. 29

County of Anoka

State of Minnesota

South 1/4 Corner of Sec. 5 Township 31 Range 23

## **CORNER HISTORY:**

November 30, 1959 - Found P.K. nail and established ties to P.K. nail by N.C. Hoium and Associates.

Unknown date - Found monument and updated ties by Anoka County highway department.

September 24, 1962 - Set head of cast iron monument flush in blacktop road and updated ties.

6/29/1964, 7/19/1968 - Found head of cast iron monument and updated ties.

August 25, 1969 - Set short removable cast iron monument flush and updated ties.

March 31, 1970 - Found cast iron monument down and raised flush. Updated ties.

11/26/1971, 5/16/1975, 6/19/1980, 10/24/1990, 7/18/1995 - Found cast iron monument and updated ties.

April 17, 2008 - Found cast iron monument broken and replaced with a brass disk set flush in concrete bridge deck over Hwy 65. Established NAD 1983 (1996 adj.) Anoka County project coordinates by static GPS. Updated ties.

\*\* (clerical change) Page no. 29A witness corner set on 6/2/2009 was renamed to **reference monument** and combined with Page no. 29 on 6/23/2023

June 2, 2009 - Set 1/2" iron pipe **reference monument** (previously 29A) flush in concrete median, on line between the South 1/4 corner and Southwest corner of section 5 using area resurvey. Established NAD 1983 (1996 adj.) Anoka County project coordinates by static GPS methods. Established ties to 1/2" iron pipe reference monument.

May 9, 2014 - Found 1/2" iron pipe **reference monument**. Verified position by VRS GPS methods. Updated ties.

June 5, 2014 - Found brass disk and updated ties.

6/19/2019, 5/12/2022 - Found 1/2" iron pipe **reference monument**. Verified position by VRS GPS methods. Updated ties.