

# CERTIFICATE OF LOCATION OF GOVERNMENT CORNER

County of Anoka

State of Minnesota

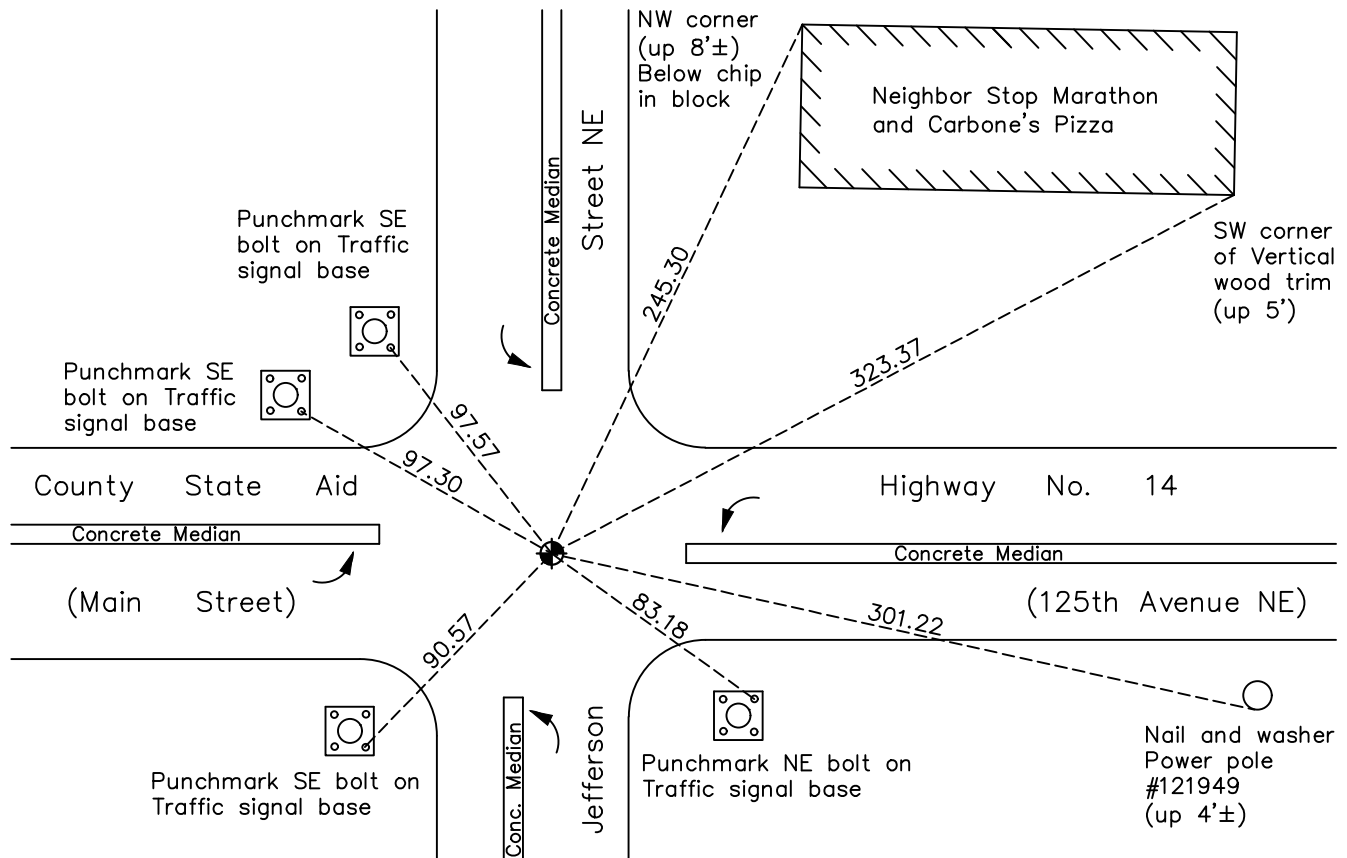
## South 1/4 Corner of Sec. 6 Township 31 Range 23

On the 30th day of August, 1960, the described corner was evidenced by an iron pipe

and to perpetuate the location of said corner, at the exact location thereof, a permanent marker was placed consisting of a cast iron monument

AND on the 23rd day of May, 2022, said permanent marker was found flush and the ties were updated

Updated reference ties are as shown below.



Revision Date  
07/13/2022

N.A.D. 1983 Coordinates  
(1996 Adjustment)

County Project Coordinates	
Northing	<u>158997.9871</u>
Easting	<u>502882.4024</u>
Date	<u>9/03/98</u>

I hereby certify that this United States public land survey monument record is correct and complete to the best of my knowledge and belief.

*David Zieglmeier* Date 2/8/23

David Zieglmeier Anoka County Surveyor  
 Minnesota License Number 46179

# HISTORY OF GOVERNMENT CORNER

Page No. 31

County of Anoka

State of Minnesota

South 1/4 Corner of Sec. 6 Township 31 Range 23

## **CORNER HISTORY:**

May 29, 1959 - Found 3/4" solid iron flush with pavement and established ties to iron.

August 30, 1960 - Found 3/4" iron pipe flush and replaced with a cast iron monument flush. Updated ties.

June 29, 1964 - Found cast iron monument and updated ties.

July 16, 1968 - Found cast iron monument and updated ties.

August 25, 1971 - Found cast iron monument and updated ties.

May 22, 1975 - Found cast iron monument and updated ties.

August 11, 1977 - Found cast iron monument flush and updated ties.

June 5, 1980 - Found cast iron monument and updated ties.

May 30, 1986 - Found cast iron monument and updated ties.

August 3, 1990 - Found cast iron monument and updated ties.

September 3, 1998 - Found cast iron monument, established NAD 1983 (1996 adj.) Anoka County project coordinates by static GPS methods and updated ties.

August 24, 2004 - Found cast iron monument and updated ties.

May 2, 2006 - Found cast iron monument and updated ties.

June 22, 2011 - Found cast iron monument, verified position by VRS GPS methods and updated ties prior to road construction. Removed monument.

September 11, 2012 - Set cast iron monument flush after road construction using static GPS methods. Updated ties.

June 5, 2014 - Found cast iron monument and updated ties.

July 31, 2019 - Found cast iron monument, verified position by VRS GPS methods and updated ties.

May 23, 2022 - Found cast iron monument flush, verified position by VRS GPS methods and updated ties.