

CERTIFICATE OF LOCATION OF GOVERNMENT CORNER

County of Anoka

State of Minnesota

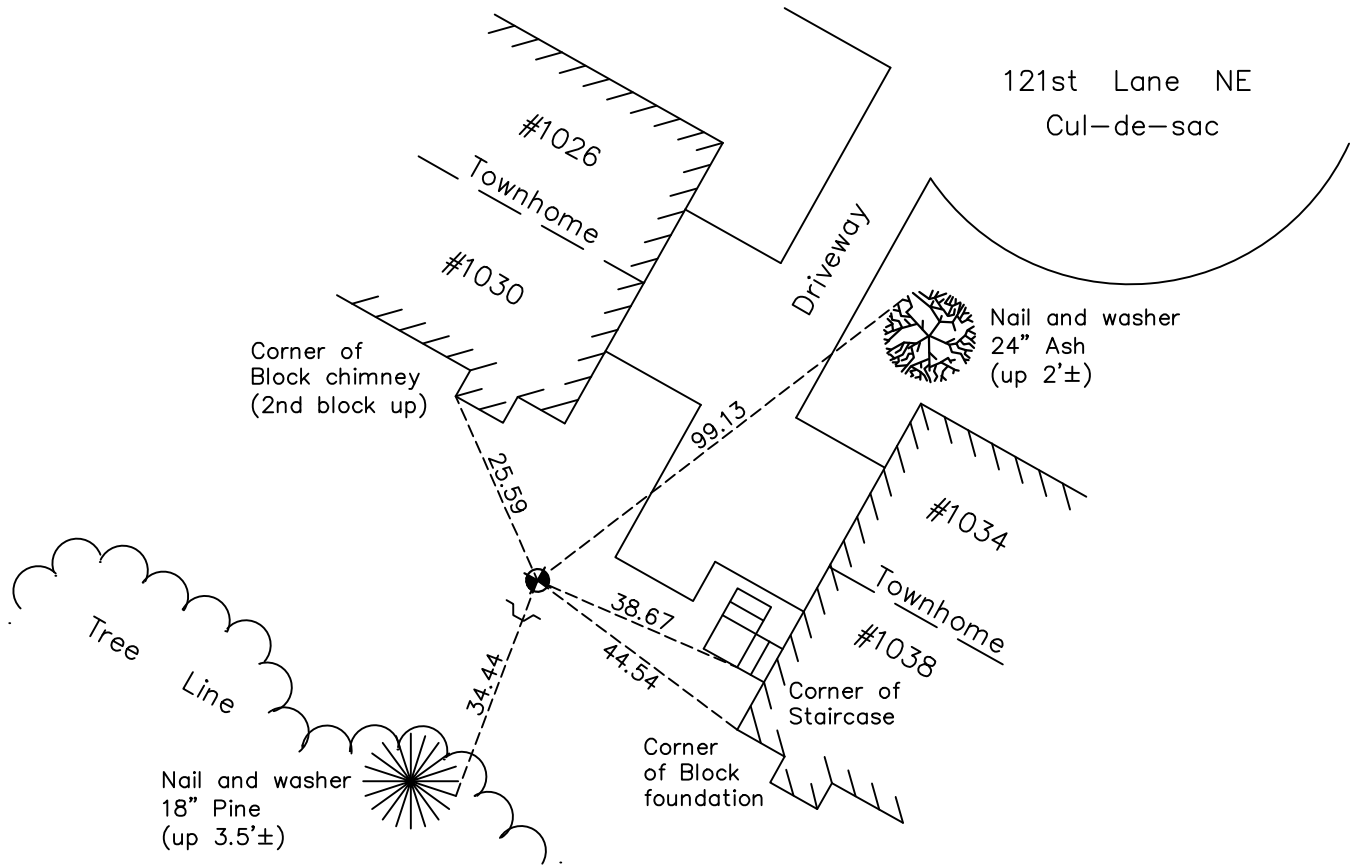
West 1/4 Corner of Sec. 8 Township 31 Range 23

On the 6th day of February, 1964, the described corner was evidenced by a 3/4" iron pipe

and to perpetuate the location of said corner, at the exact location thereof, a permanent marker was placed consisting of a cast iron monument with a sign and post on the south side

AND on the 3rd day of May, 2022, said permanent marker was found up 0.2' and the ties were updated

Updated reference ties are as shown below.



Revision Date
07/13/2022

N.A.D. 1983 Coordinates
 (1996 Adjustment)

County Project Coordinates	
Northing	<u>156382.6792</u>
Easting	<u>505526.0422</u>
Date	<u>9/03/98</u>

I hereby certify that this United States public land survey monument record is correct and complete to the best of my knowledge and belief.
David Zieglmeier Date 2/8/23
 David Zieglmeier Anoka County Surveyor
 Minnesota License Number 46179

HISTORY OF GOVERNMENT CORNER

Page No. 32

County of Anoka

State of Minnesota

West 1/4 Corner of Sec. 8 Township 31 Range 23

CORNER HISTORY:

February 6, 1964 - Found 3/4" iron pipe up 0.1' set by Suburban Engineering. Established ties to iron pipe.

September 14, 1964 - Found 3/4" iron pipe and updated ties.

July 17, 1968 - Found 3/4" iron pipe and replaced with a cast iron monument up 0.2'±. Updated ties.

August 30, 1971 - Found cast iron monument and updated ties.

May 15, 1975 - Found cast iron monument and updated ties.

August 10, 1977 - Found cast iron monument and updated ties.

June 4, 1980 - Found cast iron monument and updated ties.

January 28, 1981 - Found cast iron monument broken with bottom still in place and one corner tie remaining. Updated ties.

March 31, 1981 - Replaced broken cast iron monument with a new cast iron monument.

July 8, 1983 - Found cast iron monument and updated ties.

June 5, 1986 - Found cast iron monument and updated ties.

July 3, 1990 - Found cast iron monument and updated ties.

July 28, 1995 - Found cast iron monument and updated ties.

September 3, 1998 - Found cast iron monument, established NAD 1983 (1996 adj.) Anoka County project coordinates by static GPS methods and updated ties.

July 12, 2006 - Found cast iron monument and updated ties.

May 9, 2014 - Found cast iron monument, verified position by VRS GPS methods and updated ties.

June 18, 2019 - Found cast iron monument up 0.2'±, verified position by VRS GPS methods and updated ties.

May 3, 2022 - Found cast iron monument up 0.2'±, verified position by VRS GPS methods and updated ties.