

CERTIFICATE OF LOCATION OF GOVERNMENT CORNER

County of Anoka

State of Minnesota

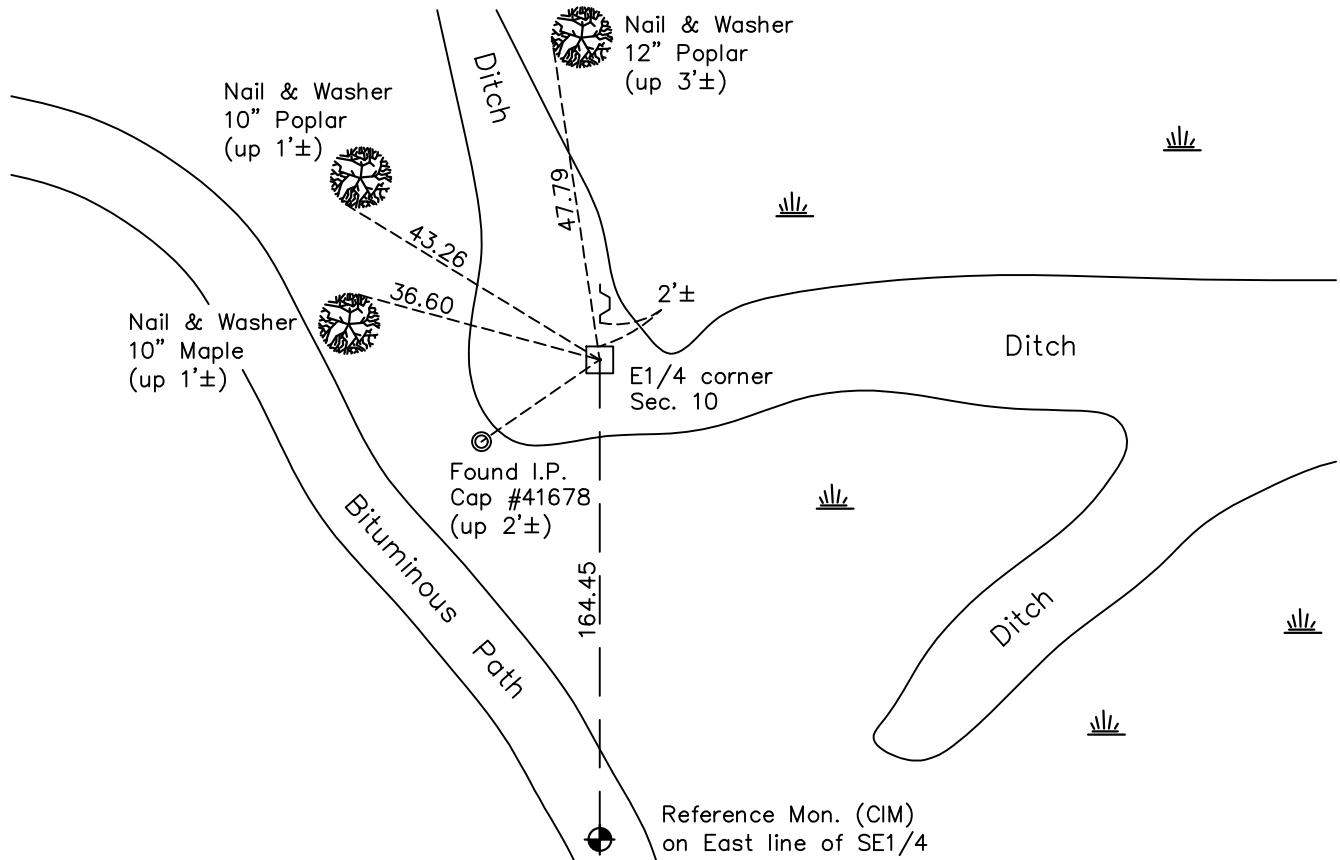
East 1/4 Corner of Sec. 10 Township 31 Range 23

On the 10th day of September, 1963, the described corner was evidenced by a 4" square concrete monument w/dimple, in the middle of a ditch under 4" of water

and to perpetuate the location of said corner, at the exact location thereof, a permanent marker was placed consisting of the same 4" square concrete monument w/dimple

AND on the 26th day of December, 2023, said permanent marker was found 0.8'± under water
Verified position by RTK and Static GPS methods. Updated ties. Set sign & post 2'± north.

Updated reference ties are as shown below.



Revision Date

1/3/2024

N.A.D. 1983 Coordinates
(1996 Adjustment)

County Project Coordinates	
Northing	<u>156234.0916</u>
Easting	<u>521427.8752</u>
Date	<u>2/10/2000</u>

I hereby certify that this United States public land survey monument record is correct and complete to the best of my knowledge and belief.

David Zieglmeier Date 1/9/24

David M. Zieglmeier, Anoka County Surveyor
 Minnesota License Number 46179

REFERENCE MONUMENT FOR GOVERNMENT CORNER

Reference to County of Anoka State of Minnesota

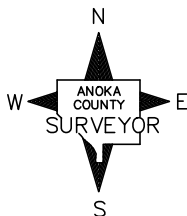
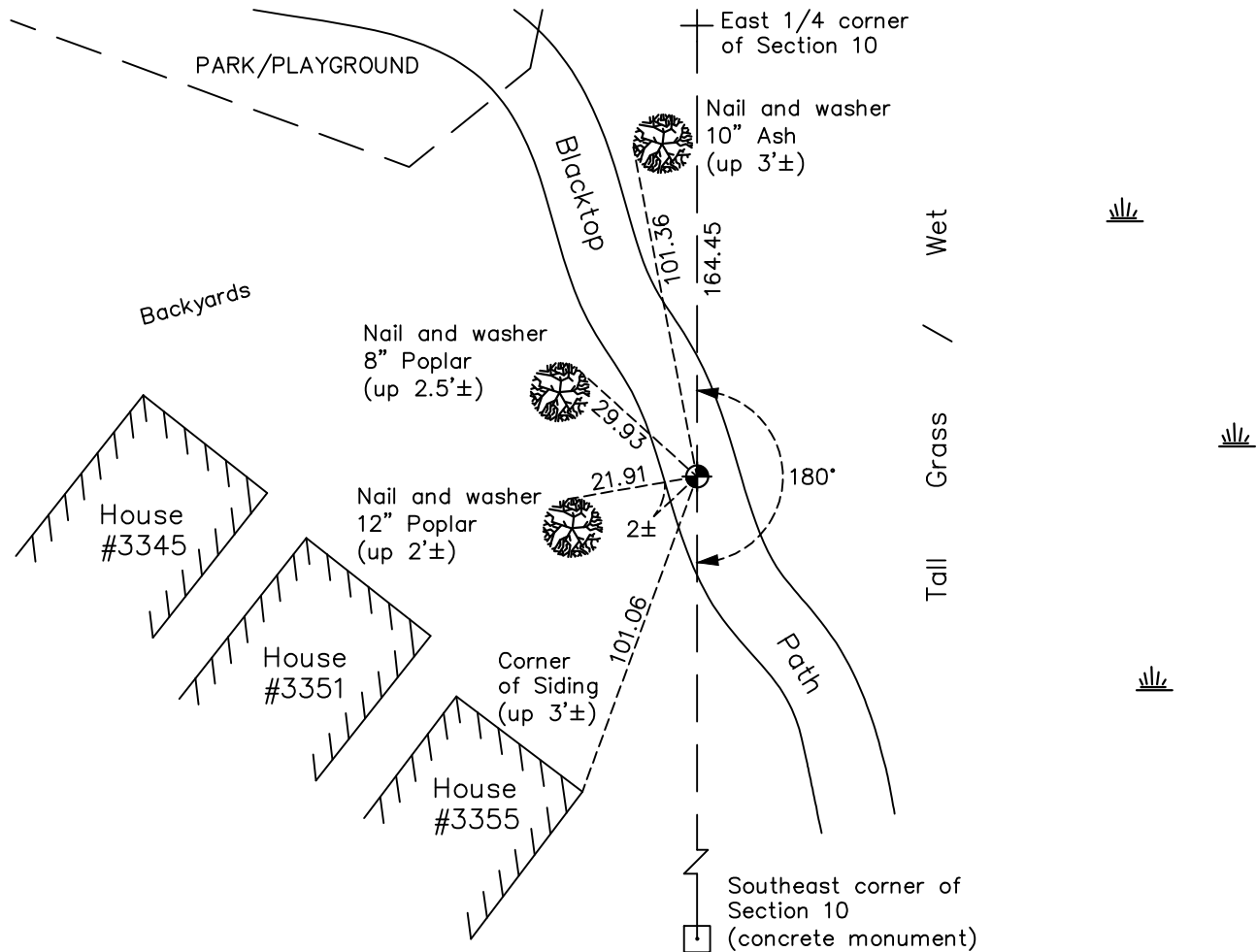
East 1/4 Corner of Sec. 10 Township 31 Range 23

On the 15th day of June, 2006, the described reference monument was set 164.45 feet southerly along the east line of the southeast quarter of said section

and to reference the location of said corner, at the exact location thereof, a permanent marker was placed consisting of a cast iron monument set in concrete within a bituminous path flush with the surface

AND on the 2nd day of May, 2022, said permanent marker was found flush and set in concrete. Verified position by VRS GPS methods and updated the ties

Updated reference ties are as shown below.



Revision Date
 1/3/2024

REFERENCE MONUMENT
 N.A.D. 1983 (1996 Adj.)

County Project Coordinates	
Northing	156069.6710
Easting	521424.1197
Date	6/15/2006

HISTORY OF GOVERNMENT CORNER

Page No. 35

County of Anoka

State of Minnesota

East 1/4 Corner of Sec. 10 Township 31 Range 23

CORNER HISTORY:

September 10, 1963 - Found a 4" square concrete monument in the middle of a ditch under 4" of water using Harvey A. Cartwright ties.

October 1, 1964 - Found a 4" square concrete monument in a ditch up 0.5'. Established ties to monument.

January 15, 1974 - Checked on monument.

1/11/1988, 8/8/1990, 7/28/1995 - Found concrete monument and updated ties.

November 16, 1999 - Found concrete monument. Updated ties. Established NAD 1983 (1996 adj.) Anoka County project coordinates using static GPS methods.

May 2, 2003 - THE LAKES OF RADISSON plat was recorded and depicts the E1/4 corner of Sec. 10

** (clerical change) certificate page no. 138 (index #249) Witness corner set on 6/15/2006 has been renamed to **Reference monument** and combined with certificate page no. 35 (index #1637) on 1/3/2024.

June 15, 2006 - Set a cast iron **Reference monument** (orig. pg. #138) 164.45 feet southerly of the E1/4 corner along the line between the E1/4 corner and SE corner of Sec. 10 T31 R23. Established ties to cast iron monument **Reference monument**.

5/15/2014, 6/10/2019, 5/2/2022 - Found cast iron **Reference monument** flush in concrete. Verified position by VRS GPS methods. Updated ties.

December 26, 2023 - Found a 4" square concrete monument w/dimple in a ditch 0.8'± under water. Verified position by RTK and static GPS methods. No previous ties found. Established new ties.