

CERTIFICATE OF LOCATION OF GOVERNMENT CORNER

County of Anoka

State of Minnesota

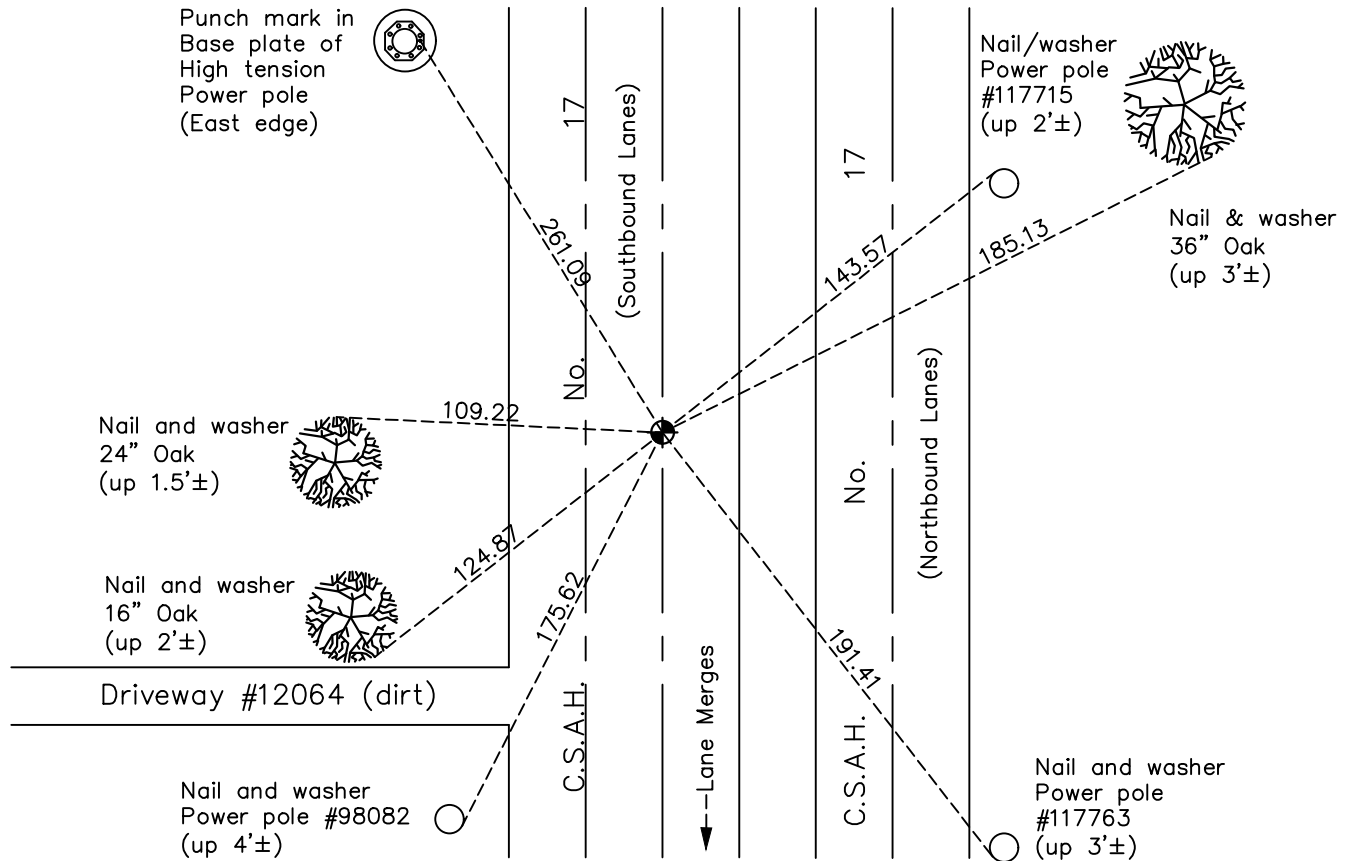
East 1/4 Corner of Sec. 11 Township 31 Range 23

On the 19th day of November, 1964, the described corner was evidenced by area resurvey

and to perpetuate the location of said corner, at the exact location thereof, a permanent marker was placed consisting of a cast iron monument

AND on the 2nd day of April, 2022, said permanent marker was found flush and the ties were updated

Updated reference ties are as shown below.



N.A.D. 1983 Coordinates
(1996 Adjustment)

County Project Coordinates	
Northing	<u>156212.4717</u>
Easting	<u>526758.4842</u>
Date	<u>10/15/98</u>

Revision Date
7/14/2022

I hereby certify that this United States public land survey monument record is correct and complete to the best of my knowledge and belief.
David Zieglmeier Date 2/8/23
 David Zieglmeier Anoka County Surveyor
 Minnesota License Number 46179

HISTORY OF GOVERNMENT CORNER

Page No. 36

County of Anoka

State of Minnesota

East 1/4 Corner of Sec. 11 Township 31 Range 23

CORNER HISTORY:

December 1956 - Found railroad spike and established ties to railroad spike by County Highway department.

November 19, 1964 - Set cast iron monument flush using area resurvey and updated ties.

August 6, 1968 - Found cast iron monument and updated ties.

August 27, 1971 - Found cast iron monument and updated ties.

May 22, 1975 - Found cast iron monument and updated ties.

August 11, 1977 - Found cast iron monument and updated ties.

May 30, 1980 - Found cast iron monument and updated ties.

July 19, 1990 - Found cast iron monument and updated ties.

July 13, 1995 - Found cast iron monument and updated ties.

October 14, 1998 - Found cast iron monument and updated ties. Established NAD 1983 (1996 adj.) Anoka County project coordinates by static GPS methods.

October 17, 2005 - Found cast iron monument and updated ties.

April 21, 2014 - Found cast iron monument. Verified position by VRS GPS methods. Updated ties.

June 11, 2019 - Found cast iron monument. Verified position by VRS GPS methods. Updated ties.

April 2, 2022 - Found cast iron monument, Verified position by VRS GPS methods and Updated ties.