

CERTIFICATE OF LOCATION OF GOVERNMENT CORNER

County of Anoka

State of Minnesota

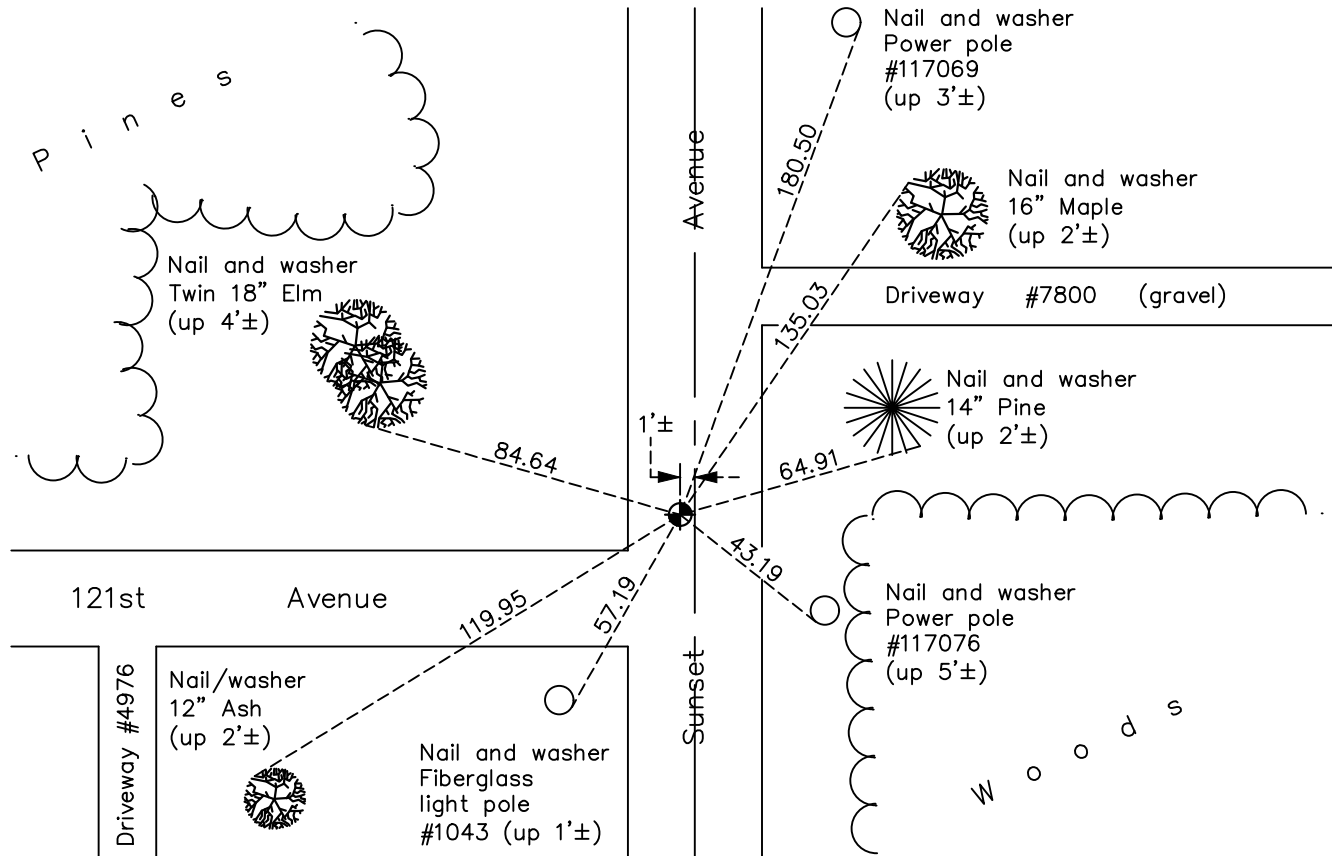
East 1/4 Corner of Sec. 12 Township 31 Range 23

On the 31st day of August, 1960, the described corner was evidenced by a 2" iron pipe

and to perpetuate the location of said corner, at the exact location thereof, a permanent marker was placed consisting of a cast iron monument

AND on the 23rd day of May, 2022, said permanent marker was found flush and the ties were updated

Updated reference ties are as shown below.



Revision Date
7/14/2022

N.A.D. 1983 Coordinates
(1996 Adjustment)

County Project Coordinates	
Northing	<u>156096.3268</u>
Easting	<u>531994.2847</u>
Date	<u>6/11/98</u>

I hereby certify that this United States public land survey monument record is correct and complete to the best of my knowledge and belief.

David Zieglmeier Date 2/8/23

David Zieglmeier Anoka County Surveyor
Minnesota License Number 46179

HISTORY OF GOVERNMENT CORNER

Page No. 37

County of Anoka

State of Minnesota

East 1/4 Corner of Sec. 12 Township 31 Range 23

CORNER HISTORY:

September 17, 1959 - Found 2" iron pipe down 1' and established ties to iron pipe.

August 31, 1960 - Found 2" iron pipe down 2' and set a cast iron monument flush. Updated ties.

June 9, 1964 - Found cast iron monument and updated ties.

July 18, 1968 - Found cast iron monument and updated ties.

August 31, 1971 - Found cast iron monument and updated ties.

May 13, 1975 - Found cast iron monument and updated ties.

August 11, 1977 - Found cast iron monument and updated ties.

December 26, 1980 - Found cast iron monument and updated ties.

June 19, 1990 - Found cast iron monument and updated ties.

July 24, 1995 - Found cast iron monument and updated ties.

June 11, 1998 - Found cast iron monument and updated ties. Established NAD 1983 (1996 adj.) Anoka County project coordinates by static GPS methods.

June 7, 2006 - Found cast iron monument and updated ties.

July 10, 2012 - Found cast iron monument and loosened top prior to road overlay.

August 20, 2012 - Found cast iron monument down and raised flush after road overlay.

May 16, 2014 - Found cast iron monument. Verified position by VRS GPS methods. Updated ties.

January 6, 2020 - Found cast iron monument. Verified position by VRS GPS methods. Updated ties.

May 23, 2022 - Found cast iron monument, Verified position by VRS GPS methods and Updated ties.