

CERTIFICATE OF LOCATION OF GOVERNMENT CORNER

County of Anoka

State of Minnesota

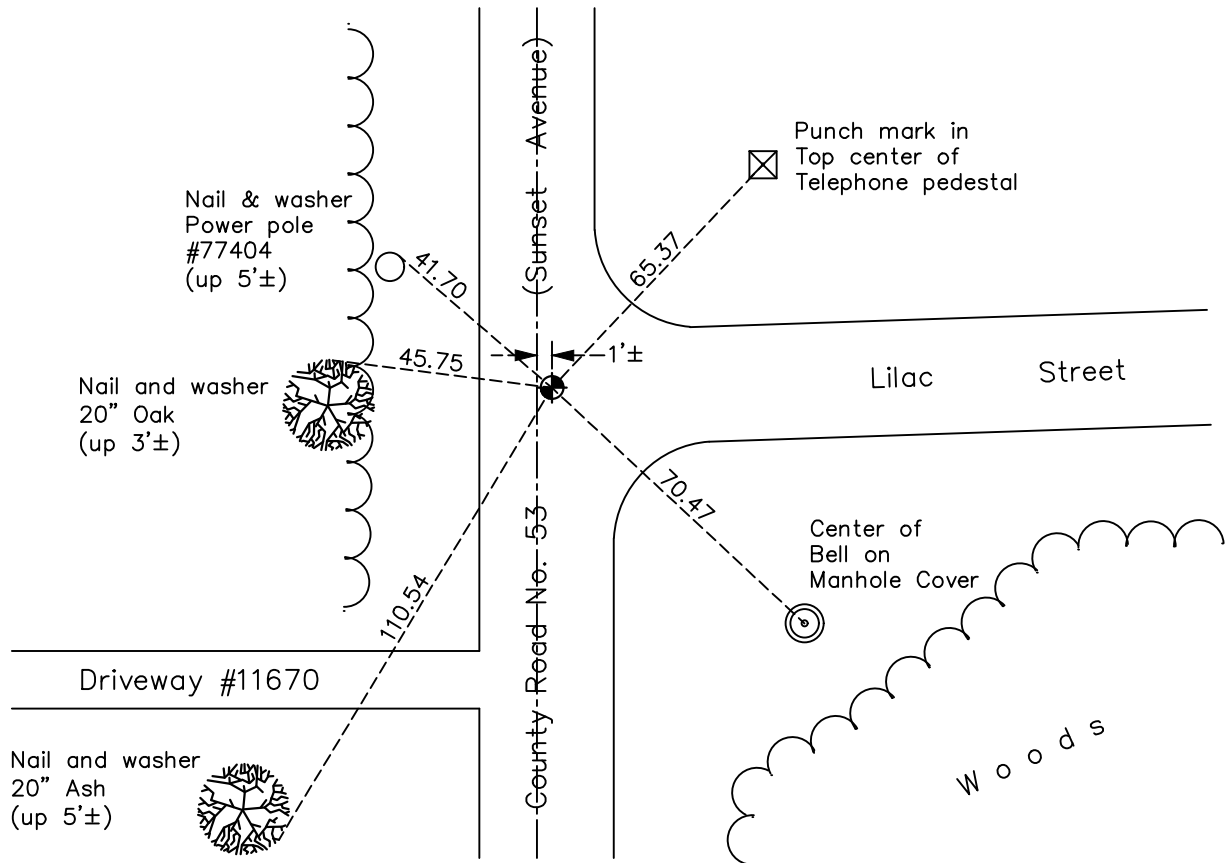
Southeast Corner of Sec. 12 Township 31 Range 23

On the 9th day of September, 1963, the described corner was evidenced by a granite monument

and to perpetuate the location of said corner, at the exact location thereof, a permanent marker was placed consisting of a cast iron monument

AND on the 12th day of May, 2022, said permanent marker was found flush and the ties were updated

Updated reference ties are as shown below.



Revision Date

7/14/2022

N.A.D. 1983 Coordinates
(1996 Adjustment)

County Project Coordinates	
Northing	<u>153440.6051</u>
Easting	<u>531991.9985</u>
Date	<u>6/11/98</u>

I hereby certify that this United States public land survey monument record is correct and complete to the best of my knowledge and belief.

David Zieglmeier Date 2/8/23

David Zieglmeier Anoka County Surveyor
Minnesota License Number 46179

HISTORY OF GOVERNMENT CORNER

Page No. 38

County of Anoka

State of Minnesota

Southeast Corner of Sec. 12 Township 31 Range 23

CORNER HISTORY:

April 6, 1943 - Found 6" x 6" granite monument flush and established ties to monument.

December 1956 - Found granite monument flush and updated ties by Anoka County highway department.

August 31, 1960 - Found granite monument down 1.5' and updated ties.

September 9, 1963 - Found granite monument under blacktop and set spike flush on top. Updated ties.

September 9, 1964 - Found spike and updated ties.

July 18, 1968 - Found spike and updated ties.

November 17, 1971 - Found spike and replaced with a cast iron monument. Updated ties.

May 30, 1975 - Found 3/4" iron pipe and replaced with a cast iron monument. Updated ties.

August 12, 1977 - Found cast iron monument and updated ties.

May 29, 1980 - Found cast iron monument and updated ties.

June 3, 1986 - Found cast iron monument and updated ties.

June 19, 1990 - Found cast iron monument and updated ties.

July 24, 1995 - Found cast iron monument and updated ties.

June 11, 1998 - Found cast iron monument and updated ties. Established NAD 1983 (1996 adj.) Anoka County project coordinates by static GPS methods.

June 7, 2006 - Found cast iron monument and updated ties.

July 10, 2012 - Found cast iron monument and loosened top prior to road overlay.

August 17, 2012 - Found cast iron monument down and raised flush after road overlay.

May 16, 2014 - Found cast iron monument. Verified position by VRS GPS methods. Updated ties.

July 2, 2019 - Found cast iron monument. Verified position by VRS GPS methods. Updated ties.

May 12, 2022 - Found cast iron monument, Verified position by VRS GPS methods and Updated ties.