

CERTIFICATE OF LOCATION OF GOVERNMENT CORNER

County of Anoka

State of Minnesota

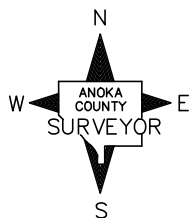
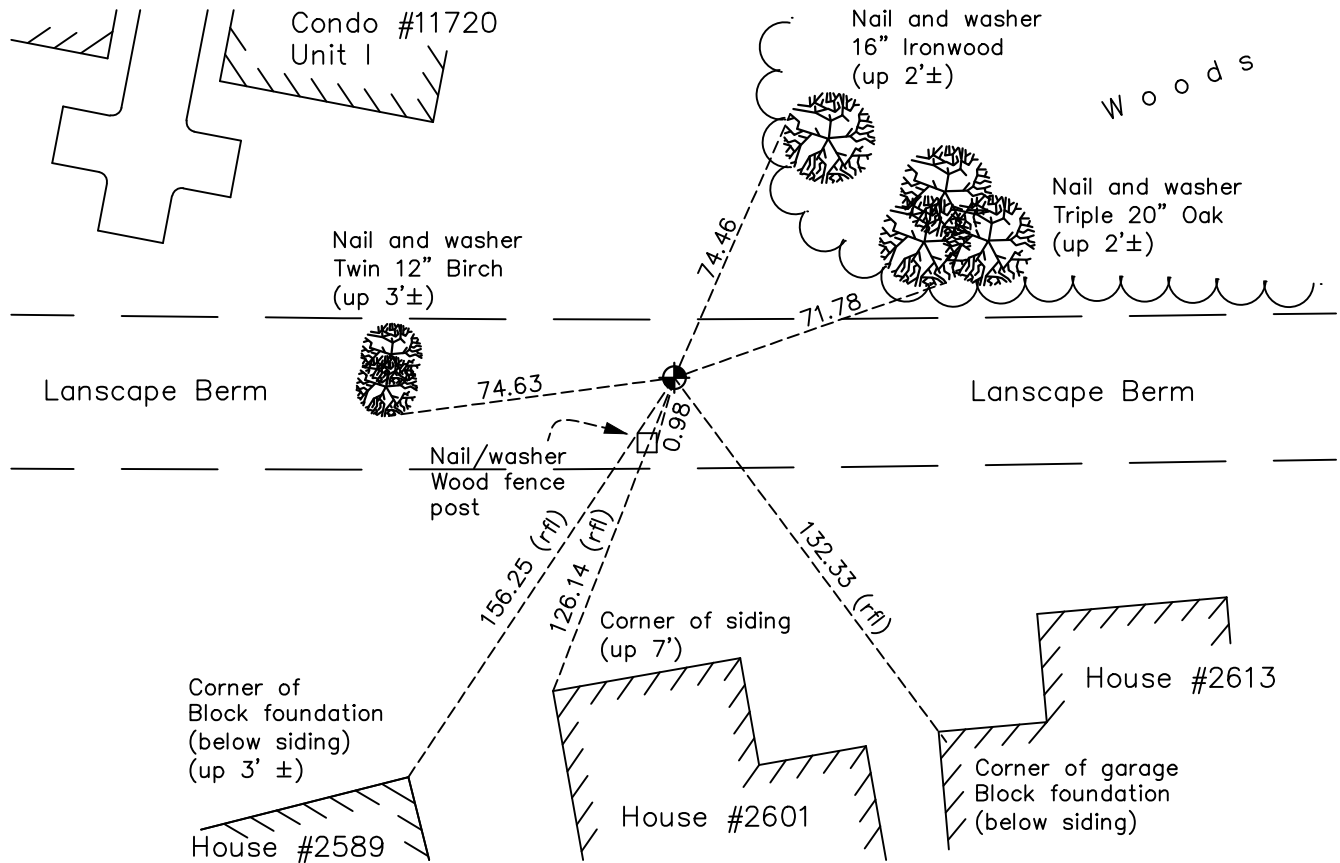
Northwest Corner of Sec. 15 Township 31 Range 23

On the 30th day of April, 1963, the described corner was evidenced by information
from an old Ridge survey

and to perpetuate the location of said corner, at the exact location thereof, a permanent marker
was placed consisting of a cast iron monument

AND on the 5th day of May, 2022, said permanent marker was found down 0.4'± and
the ties were updated

Updated reference ties are as shown below.



Revision Date
7/14/2022

N.A.D. 1983 Coordinates
(1996 Adjustment)

County Project Coordinates	
Northing	153711.3901
Easting	516065.9227
Date	10/27/98

I hereby certify that this United States public land survey monument record is correct and complete to the best of my knowledge and belief.
David Zieglmeier Date 2/8/23
David Zieglmeier Anoka County Surveyor
Minnesota License Number 46179

HISTORY OF GOVERNMENT CORNER

Page No. 44

County of Anoka

State of Minnesota

Northwest Corner of Sec. 15 Township 31 Range 23

CORNER HISTORY:

June 4, 1959 - Found railroad spike and established ties to spike.

April 30, 1963 - Found railroad spike set by R.W. Anderson and Wayne Ridge using information from Old Ridge Survey. Updated ties.

July 7, 1964 - Found railroad spike and updated ties.

August 7, 1968 - Found railroad spike and replaced with a cast iron monument up 0.2'±. Updated ties.

September 1, 1971 - Found cast iron monument and updated ties.

May 15, 1975 - Found cast iron monument and updated ties.

August 30, 1977 - Found cast iron monument and updated ties.

June 6, 1980 - Found cast iron monument and updated ties.

July 11, 1983 - Found cast iron monument and updated ties.

May 29, 1986 - Found cast iron monument and updated ties.

July 23, 1990 - Found cast iron monument and updated ties.

July 24, 1995 - Found cast iron monument and updated ties.

October 27, 1998 - Found cast iron monument and updated ties. Established NAD 1983 (1996 adj.) Anoka County project coordinates by static GPS methods.

July 11, 2006 - Found cast iron monument and updated ties.

May 15, 2014 - Found cast iron monument down 0.4'±. Verified position by VRS GPS methods. Updated ties.

June 11, 2019 - Found cast iron monument down 0.4'±. Verified position by VRS GPS methods. Updated ties.

May 5, 2022 - Found cast iron monument down 0.4'±, Verified position by VRS GPS method and Updated ties.