

CERTIFICATE OF LOCATION OF GOVERNMENT CORNER

County of Anoka

State of Minnesota

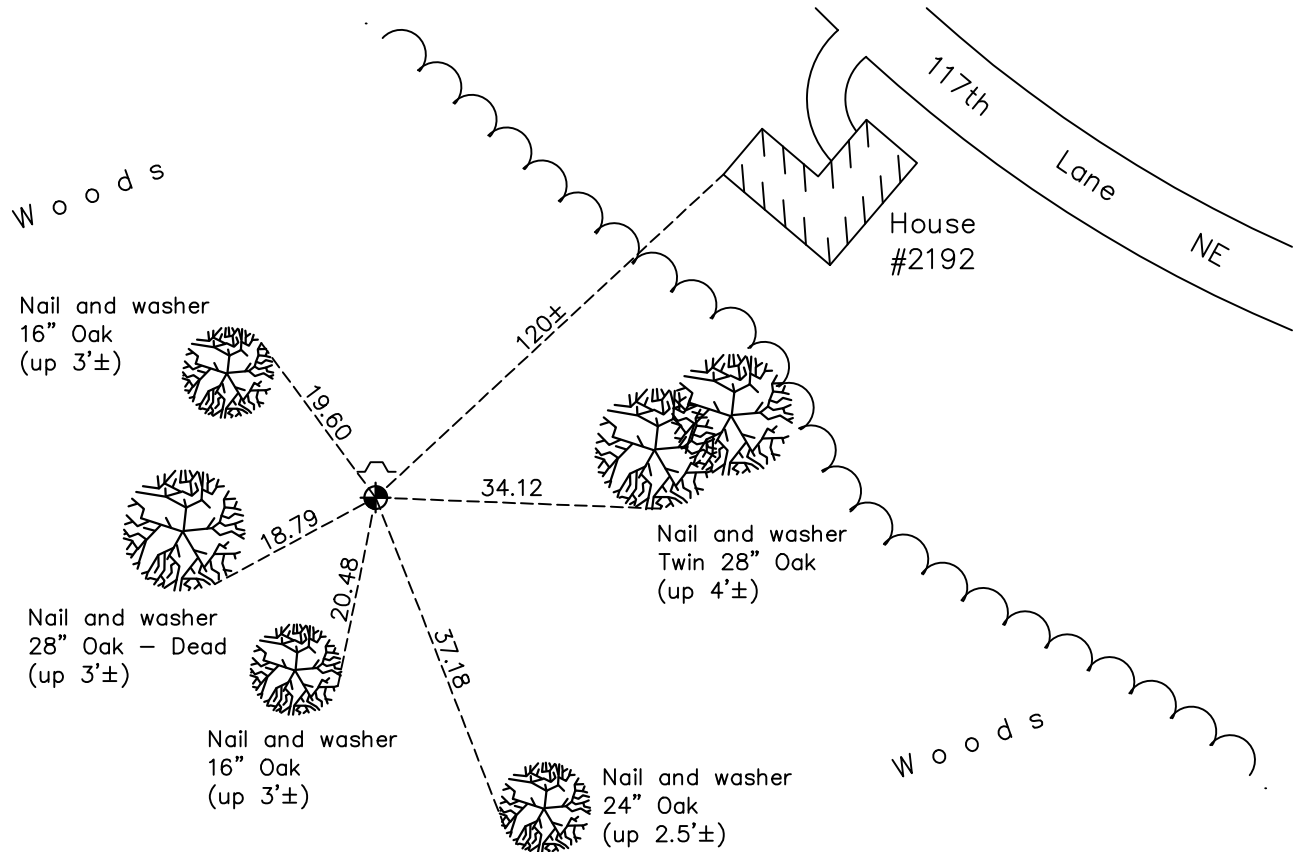
South 1/4 Corner of Sec. 9 Township 31 Range 23

On the 7th day of August, 1968, the described corner was evidenced by a 2" iron pipe

and to perpetuate the location of said corner, at the exact location thereof, a permanent marker was placed consisting of a cast iron monument with a sign and post on the north side

AND on the 4th day of May, 2022, said permanent marker was found up 0.1'± and the ties were updated

Updated reference ties are as shown below.



Revision Date

07/14/2022

N.A.D. 1983 Coordinates
(1996 Adjustment)

County Project Coordinates	
Northing	153725.8542
Easting	513468.1043
Date	11/09/98

I hereby certify that this United States public land survey monument record is correct and complete to the best of my knowledge and belief.

David Zieglmeier Date 2/8/23

David Zieglmeier Anoka County Surveyor
Minnesota License Number 46179

HISTORY OF GOVERNMENT CORNER

Page No. 45

County of Anoka

State of Minnesota

South 1/4 Corner of Sec. 9 Township 31 Range 23

CORNER HISTORY:

September 11, 1963 - Found 2" iron pipe up 0.3' and established ties to iron pipe.

August 7, 1968 - Found 2" iron pipe and replaced with a cast iron monument up 0.2'±. Updated ties.

September 1, 1971 - Found cast iron monument and updated ties.

May 15, 1975 - Found cast iron monument and updated ties.

August 30, 1977 - Found cast iron monument and updated ties.

June 6, 1980 - Found cast iron monument and updated ties.

November 6, 1990 - Found cast iron monument and updated ties.

July 24, 1995 - Found cast iron monument and updated ties.

November 9, 1998 - Found cast iron monument, established NAD 1983 (1996 adj.) Anoka County project coordinates by static GPS methods and updated ties.

July 12, 2006 - Found cast iron monument and updated ties.

May 14, 2014 - Found cast iron monument up 0.2'± and updated ties.

June 11, 2019 - Found cast iron monument up 0.2'± and updated ties.

May 4, 2022 - Found cast iron monument up 0.2'±, verified position by VRS GPS method and updated ties.