

CERTIFICATE OF LOCATION OF GOVERNMENT CORNER

County of Anoka

State of Minnesota

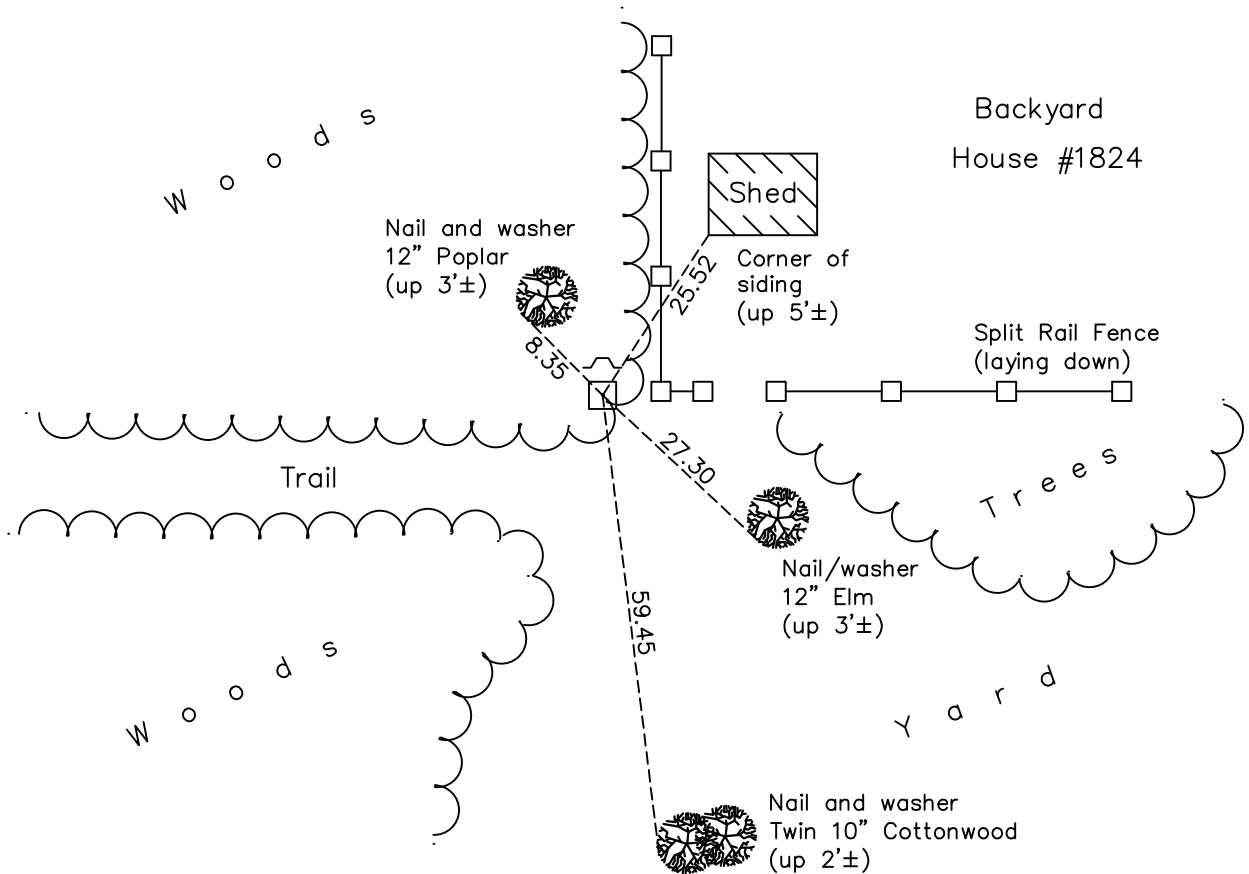
Southwest Corner of Sec. 9 Township 31 Range 23

On the 18th day of June, 1962, the described corner was evidenced by a granite monument

and to perpetuate the location of said corner, at the exact location thereof, a permanent marker was placed consisting of the same granite monument with a sign and post on the north side

AND on the 3rd day of May, 2022, said permanent marker was found up 0.1' ± and the ties were updated

Updated reference ties are as shown below.



Revision Date
 07/14/2022

N.A.D. 1983 Coordinates
 (1996 Adjustment)

County Project Coordinates	
Northing	153742.7644
Easting	510833.9341
Date	11/09/98

I hereby certify that this United States public land survey monument record is correct and complete to the best of my knowledge and belief.
David Zieglmeier Date 2/8/23
 David Zieglmeier Anoka County Surveyor
 Minnesota License Number 46179

HISTORY OF GOVERNMENT CORNER

Page No. 46

County of Anoka

State of Minnesota

Southwest Corner of Sec. 9 Township 31 Range 23

CORNER HISTORY:

June 18, 1962 - Set 6" square granite monument back in place using the Cartwright ties with a 3/4" iron pipe underneath. Established ties to monument.

August 7, 1968 - Found granite monument and updated ties.

September 1, 1971 - Found granite monument and updated ties.

May 15, 1975 - Found granite monument and updated ties.

August 30, 1977 - Found granite monument and updated ties.

January 8, 1981 - Found granite monument and updated ties.

June 5, 1986 - Found granite monument and updated ties.

August 1, 1990 - Found granite monument and updated ties.

July 24, 1995 - Found granite monument and updated ties.

November 9, 1998 - Found granite monument, established NAD 1983 (1996 adj.) Anoka County project coordinates and updated ties.

July 11, 2006 - Found granite monument and updated ties.

May 14, 2014 - Found granite monument and updated ties.

June 12, 2019 - Found granite monument flush, verified position by VRS GPS methods and updated ties.

May 3, 2022 - Found granite monument, verified position by VRS GPS methods and updated ties.