

CERTIFICATE OF LOCATION OF GOVERNMENT CORNER

County of Anoka

State of Minnesota

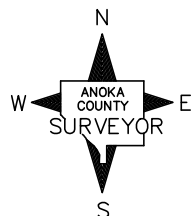
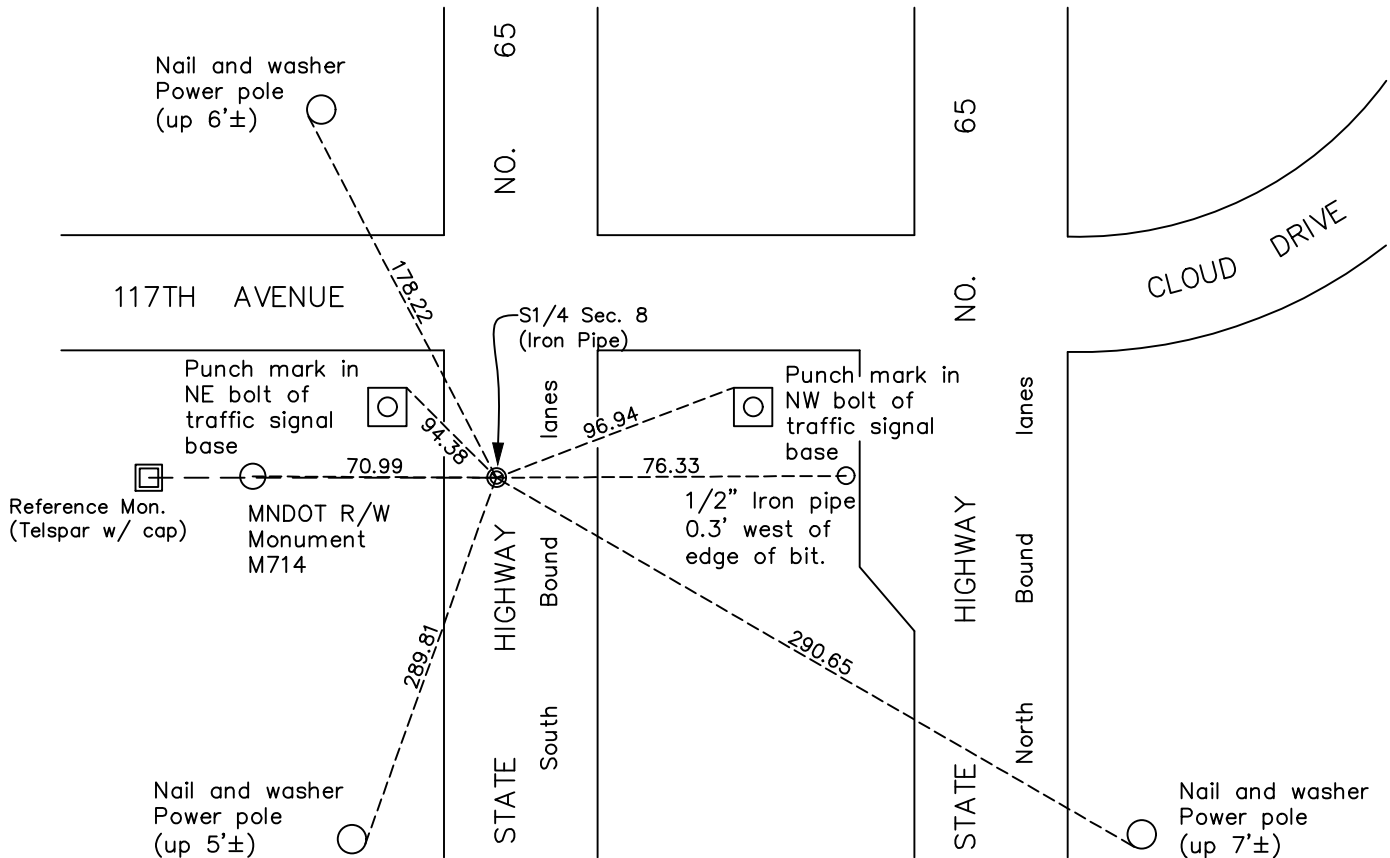
South 1/4 Corner of Sec. 8 Township 31 Range 23

On the 30th day of August, 2006, the described corner was evidenced by an area resurvey
(location previously evidenced by a P.K. nail which was not found)

and to perpetuate the location of said corner, at the exact location thereof, a permanent marker
was placed consisting of a 1/2" iron pipe with cap

AND on the 13th day of June, 2023, said permanent marker was found 1/2" PIPE flush w/
surface. Reference monument (index #1628) was set 75' westerly and ties established.

Updated reference ties are as shown below.



N.A.D. 1983 Coordinates
(1996 Adjustment)

County Project Coordinates

Northing 153746.8024

Easting 508174.5936

Date 8/30/06

I hereby certify that this United States public land survey monument record is correct and complete to the best of my knowledge and belief.

David Zieglmeier Date 12/7/23

David M. Zieglmeier, Anoka County Surveyor

Minnesota License Number 46179

Revision Date

8/01/2023

REFERENCE MONUMENT FOR GOVERNMENT CORNER

Reference to County of Anoka State of Minnesota

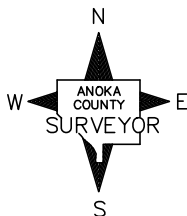
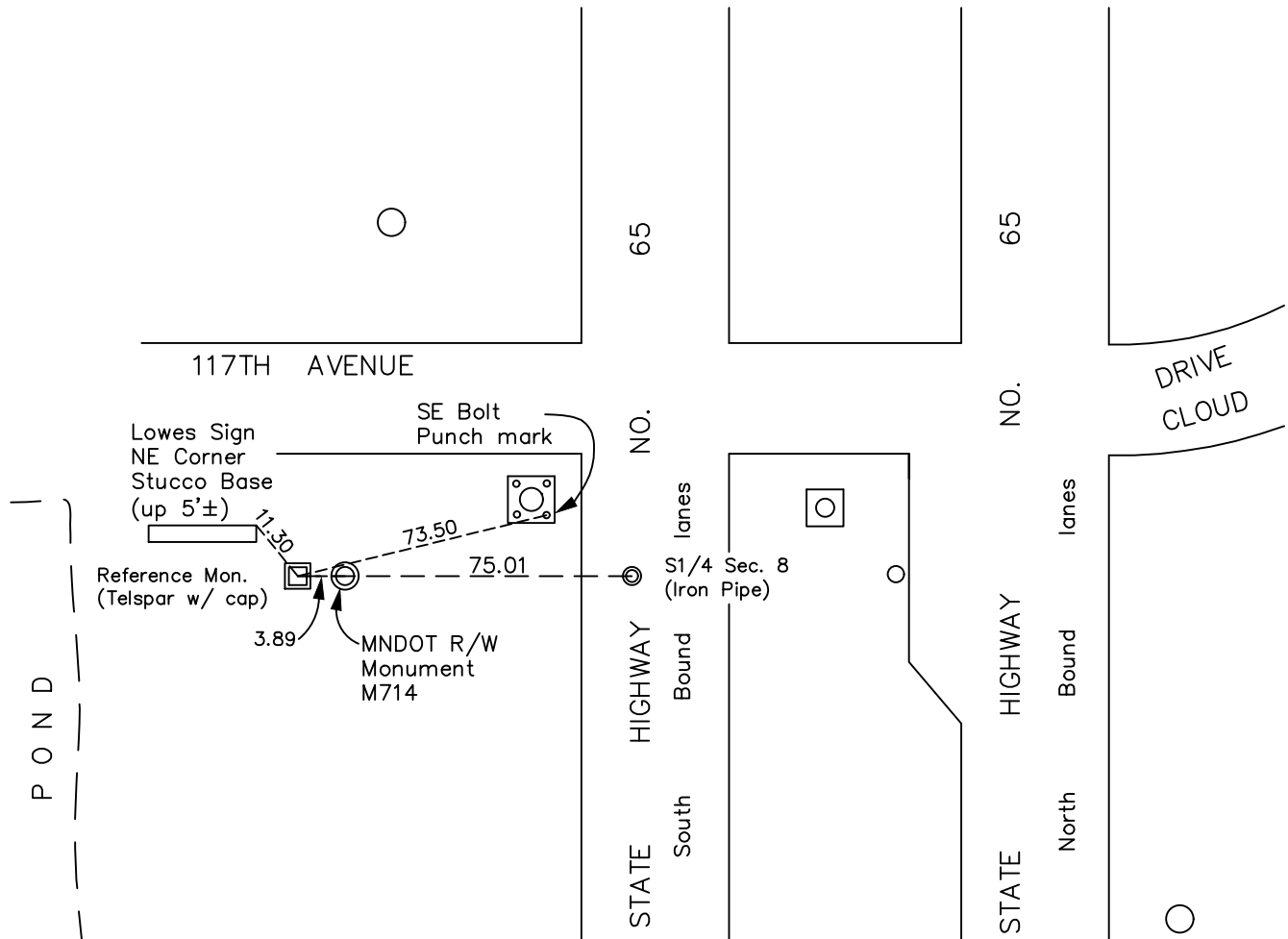
South 1/4 Corner of Sec. 8 Township 31 Range 23

On the 13th day of June, 2023, the described reference monument was evidenced by a computed position 75' westerly along the section line

and to reference the location of said corner, at the exact location thereof, a permanent marker was placed consisting of a 1/2" X 2' long rebar with Aluminum County cap and punch mark

AND on the 13th day of June, 2023, said permanent marker was set up 0.2'± using RTK GPS method and ties were established to the reference monument

Updated reference ties are as shown below.



Revision Date
 8/01/2023

REFERENCE MONUMENT
 N.A.D. 1983 (2011 Adj.)

County Project Coordinates	
Northing	153747.0268
Easting	508099.5939
Date	06/13/2023

HISTORY OF GOVERNMENT CORNER

Page No. 47

County of Anoka

State of Minnesota

South 1/4 Corner of Sec. 8 Township 31 Range 23

CORNER HISTORY:

February 6, 1964 - Set a P.K. nail using position of Suburban Engineering. Established ties to P.K. nail.

August 25, 1969 - Found P.K. nail and replaced with a cast iron monument flush. Updated ties.

May 16, 1975 - Found cast iron monument down, raised flush and updated the ties.

August 11, 1977 - Found cast iron monument and updated ties.

June 4, 1980 - Found cast iron monument and updated ties.

June 11, 1986 - Found P.K. nail and updated ties.

July 11, 1990 - Found P.K. nail and updated ties.

October 24, 1990 - Found P.K. nail and updated ties.

July 18, 1995 - Found P.K. nail and updated ties.

August 30, 2006 - Found P.K. nail missing and set a 1/2" iron pipe flush using area resurvey. Established NAD 1983 (1996 adj.) Anoka County project coordinates by static GPS methods and updated ties.

December 3, 2021 - Found iron pipe missing. Set new 1/2" iron pipe w/cap flush using VRS GPS methods.

June 13, 2023 - Found iron pipe w/ cap flush with road surface. Set **reference monument** to a computed position 75' westerly along the section line using RTK GPS method consisting of a 2" square steel Telspar with an aluminum cap and punch mark, set up 0.2'±. Established ties to the **reference monument**.