

CERTIFICATE OF LOCATION OF GOVERNMENT CORNER

County of Anoka

State of Minnesota

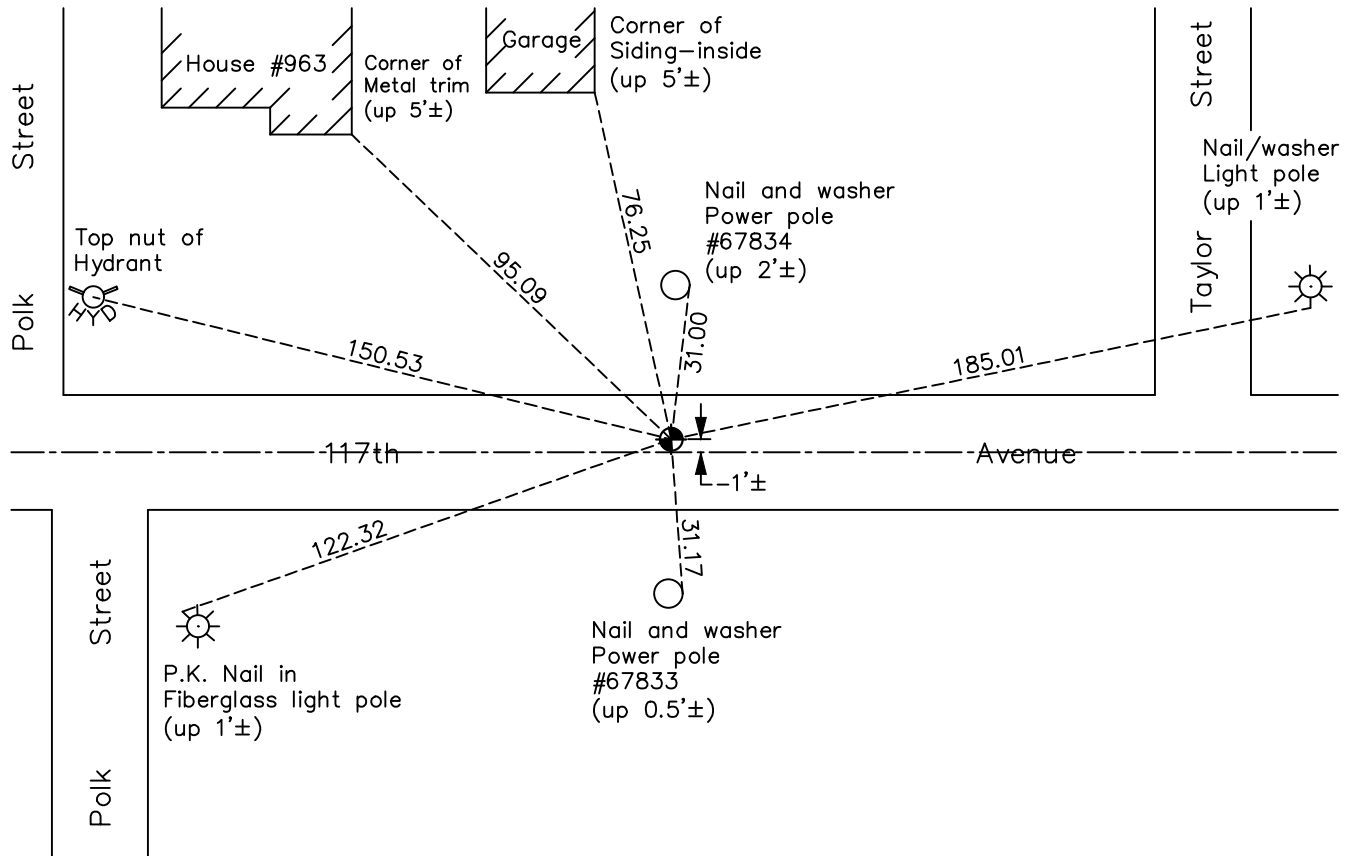
Southeast Corner of Sec. 7 Township 31 Range 23

On the 7th day of July, 1960, the described corner was evidenced by a concrete monument

and to perpetuate the location of said corner, at the exact location thereof, a permanent marker was placed consisting of a cast iron monument

AND on the 3rd day of May, 2022, said permanent marker was found flush and the ties were updated

Updated reference ties are as shown below.



Revision Date
7/14/2022

N.A.D. 1983 Coordinates
 (1996 Adjustment)

County Project Coordinates	
Northing	<u>153754.7163</u>
Easting	<u>505529.0622</u>
Date	<u>9/03/98</u>

I hereby certify that this United States public land survey monument record is correct and complete to the best of my knowledge and belief.

David Zieglmeier Date 2/8/23

David Zieglmeier Anoka County Surveyor
 Minnesota License Number 46179

HISTORY OF GOVERNMENT CORNER

Page No. 48

County of Anoka

State of Minnesota

Southeast Corner of Sec. 7 Township 31 Range 23

CORNER HISTORY:

July 7, 1960 - Found concrete monument down 1.5'± and established ties to monument.

June 9, 1964 - Found concrete monument and updated ties.

September 6, 1968 - Found concrete monument and set a cast iron monument down 0.3'± on top of concrete monument. Updated ties.

July 29, 1968 - Found cast iron monument and updated ties.

August 14, 1969 - Found cast iron monument and updated ties.

August 30, 1971 - Found cast iron monument and updated ties.

May 8, 1973 - Replaced cast iron monument and checked ties.

May 15, 1975 - Found cast iron monument and updated ties.

April 19, 1978 - Found concrete monument down 0.8'± and updated ties.

June 4, 1980 - Found concrete monument and updated ties.

May 7, 1985 - Found concrete monument and updated ties prior to road construction. Removed monument.

October 14, 1985 - Set cast iron monument after road construction and updated ties.

May 29, 1986 - Found cast iron monument and updated ties.

June 20, 1990 - Found cast iron monument and updated ties.

June 6, 1995 - Found cast iron monument and updated ties.

September 3, 1998 - Found cast iron monument, established NAD 1983 (1996 adj.) Anoka County project coordinates by static GPS methods and updated ties.

July 12, 2006 - Found cast iron monument and updated ties.

August 20, 2009 - Found cast iron monument, set construction ties and updated corner ties prior to road construction. Removed monument.

November 24, 2009 - Set temporary p.k. nail after road construction using construction ties. Checked corner ties.

August 16, 2010 - Found temporary p.k. nail and replaced with a cast iron monument flush. Updated ties.

April 22, 2014 - Found cast iron monument and updated ties.

June 12, 2019 - Found cast iron monument, verified position by VRS GPS methods and updated ties.

May 3, 2022 - Found cast iron monument, verified position by VRS GPS methods and updated ties.