

CERTIFICATE OF LOCATION OF GOVERNMENT CORNER

County of Anoka

State of Minnesota

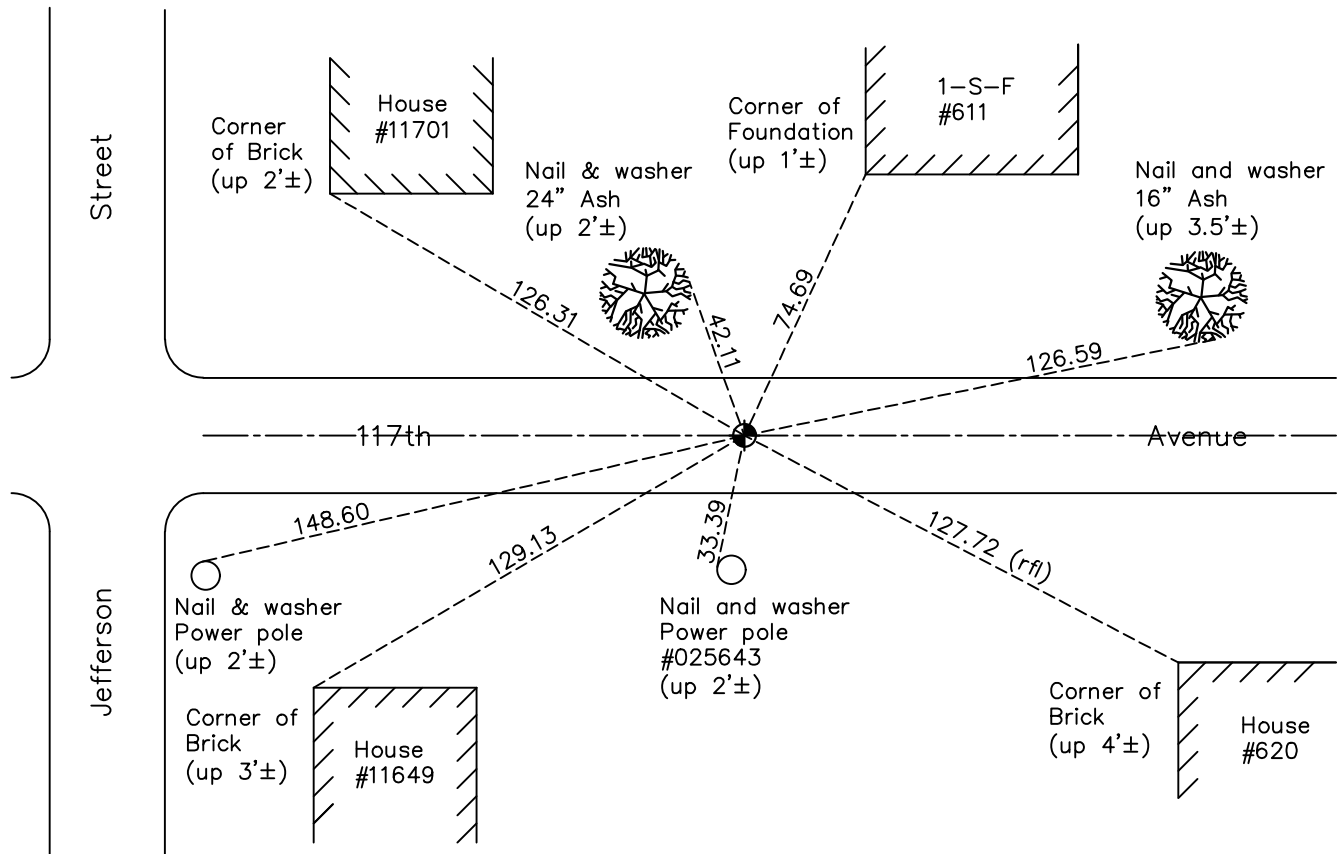
South 1/4 Corner of Sec. 7 Township 31 Range 23

On the 8th day of May, 1973, the described corner was evidenced by a concrete monument

and to perpetuate the location of said corner, at the exact location thereof, a permanent marker was placed consisting of a cast iron monument with P.K. nails 2.00' North and West

AND on the 3rd day of May, 2022, said permanent marker was found flush and the ties were updated

Updated reference ties are as shown below.



N.A.D. 1983 Coordinates
(1996 Adjustment)

County Project Coordinates	
Northing	153710.6803
Easting	502872.8492
Date	9/03/98

I hereby certify that this United States public land survey monument record is correct and complete to the best of my knowledge and belief.

David Zieglmeier Date 2/8/23

David Zieglmeier Anoka County Surveyor
Minnesota License Number 46179

Revision Date

7/14/2022

HISTORY OF GOVERNMENT CORNER

Page No. 49

County of Anoka

State of Minnesota

South 1/4 Corner of Sec. 7 Township 31 Range 23

CORNER HISTORY:

April 30, 1963 - Found concrete monument set by Harvey A. Cartwright and established ties to monument.

June 9, 1964 - Found concrete monument and updated ties.

June 18, 1965 - Found concrete monument flush and updated ties prior to road construction.

July 22, 1968 - Found iron pipe on top of concrete monument. Replaced iron pipe with a cast iron monument on top of concrete monument and updated ties.

August 13, 1969 - Found cast iron monument and updated ties.

November 18, 1971 - Found cast iron monument and concrete monument missing. Set P.K. nail and updated ties.

May 8, 1973 - Found P.K. nail and replaced with a cast iron monument. Updated ties.

May 15, 1975 - Found cast iron monument and updated ties.

August 30, 1977 - Found cast iron monument and updated ties.

June 4, 1980 - Found cast iron monument and updated ties.

May 29, 1986 - Found cast iron monument and updated ties.

January 12, 1988 - Found cast iron monument and updated ties.

June 19, 1990 - Found cast iron monument and updated ties.

September 21, 1992 - Raised cast iron monument flush and updated ties.

June 6, 1995 - Found cast iron monument and updated ties.

September 3, 1998 - Found cast iron monument, established NAD 1983 (1996 adj.) Anoka County project coordinates by static GPS methods and updated ties.

July 10, 2006 - Found cast iron monument and updated ties.

August 19, 2009 - Found cast iron monument, set construction ties and updated corner ties prior to road construction. Removed monument.

August 16, 2010 - Set cast iron monument flush after road construction using construction ties. Updated ties.

May 12, 2014 - Found cast iron monument and updated ties.

June 12, 2019 - Found cast iron monument, verified position by VRS GPS methods and updated ties.

May 3, 2022 - Found cast iron monument, verified position by VRS GPS methods and updated ties.